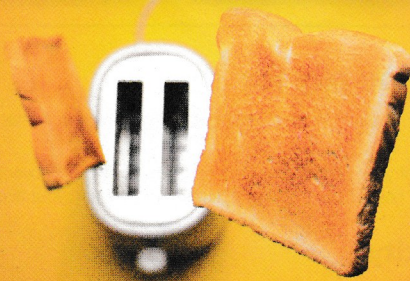


Account number

673 137 449 141

Bill date: 16 Mar 2015



edfenergy.com

0800 096 9000

8am-8pm Mon-Fri, 8am-2pm Sat

24 hour emergencies:

Electricity: 0800 783 8866

Gas: 0800 111 999



Page 1 of 3

Mr C O'Neill, Mrs O'Neill
2 Saddlers Hall
Saddlers Park, Eynsford
Dartford
DA4 0HB

U

Hello Mr C O'Neill,

Your electricity and gas bill

For 26 November 2014 - 13 March 2015 (108 days)

| | |
|---|--------------------|
| The balance on your last bill (25 November 2014) | £54.79 in debit |
|---|--------------------|

| | |
|---------------------------------------|-------------------|
| You paid us (3 payments of £98.00) | £294.00 credit |
|---------------------------------------|-------------------|

| | |
|--|---------|
| Your charges for this period (including VAT) | £426.24 |
|--|---------|

| | |
|---------------------------------|----------------------------|
| Your new account balance | £187.03 in debit |
|---------------------------------|----------------------------|

We are changing your monthly payment to £101.00

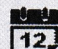
Your annual billing period is **29 Aug 2014 - 25 Sep 2015**.

Based on your current usage and prices including VAT, we now predict you will spend **£1,177.40** by the end of your annual billing period. Since you've already paid **£576.00** and we'll take one more payment of **£98.00**, we'll spread **£503.40** over 5 payments.

So, unless we hear from you, we'll change your payment to **£101.00** starting on **28 Apr 2015** to keep your account on track.

You will find details of how we set Direct Debit amounts on the last page of your bill.

Could you pay less?

 Over the next 12 months

Electricity personal projection: £557.30

Gas personal projection: £535.18

This is based on an estimate of your usage last year. It includes your current tariff until 31 Mar 2015 and our current Standard (Variable) prices thereafter, as well as discounts or charges, like VAT.

Our cheapest overall tariff

Over the next year you could save **£163.61** by choosing *Blue+Price Promise July 2016* with Direct Debit, our **cheapest fixed electricity and gas tariff** available for your meters.

Please note, Blue+Price Promise July 2016 has limited availability and may be withdrawn from sale at any time.

Remember - It might be worth thinking about switching your tariff or supplier.

Please note that switching tariffs may involve changing to materially different terms and conditions.

For more about your current tariff, see page 2.