
Geoffrey Parker Games Ltd

The World's finest board games, hand made in our English workshops

AUTUMN 2013 PRICE LIST

Please find the following pages of our Retail price list for 2012. All games are hand made in our English country workshops using the finest materials available and built to championship standards.

Custom and special commission work is positively encouraged - please contact us at the numbers below to discuss your requirements.

Personalisation can be embossed in Times Roman typeface in gold or silver to all our *Bespoke* collection (signified by a "B" on the price list) and also within our printed elather range entitled *Off the Bench* (signified by a prefix of "O" on the price list). Company logos etc can also be reproduced easily. Items within our *Exceptional Pieces* portfolio, almost anything can be done!



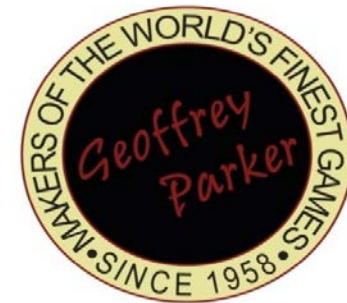
Traditionally hand inlaid



Precious and Exotic



Edited Luxury



www.geoffreyparker.com

Please note that Monopoly®, Cluedo®, Trivial Pursuit® and Subbuteo® are manufactured under license. © 2003 Hasbro International Inc. All rights reserved. Licensed by Hasbro Consumer Products & 3D Licensing Ltd and Scrabble® licensed by Mattel Europa B.V. © 1988, 1997. All rights reserved J.W. Spear & Sons plc. All designs © Geoffrey Parker Games Ltd, 2007 onwards.

Tel + 44 (0) 1799 599 100 Fax + 44 (0) 1799 599 733 E-mail: bespoke@geoffreyparker.com Web: www.geoffreyparker.com

Piglets Corner - Upper Green - Wimbish Village - Saffron Walden - Essex CB10 2XJ, England

Geoffrey Parker Games Ltd

The World's finest board games, hand made in our English workshops

TERMS & COINDITIONS OF SALE

PRICES: All prices are in **GB Pounds Sterling** include delivery World-wide (this does not apply to all larger items such as game cubes & tables where there may be a supplement applicable, these items are marked with a (+s) next to the reference number - please ask when ordering) but not local taxes or import duties or charges. Please note the US dollar and Euro prices are only a rough guide and it will always be cheaper for us to charge you in pounds Sterling due to currency fluctuations.

PAYMENT: For all made to order items, a **50% deposit is required with order, balance before shipping**. For off the shelf dispatched items, full payment is required. Telegraphic transfers or BACS payment direct to our bank account as follows: For the account of **Geoffrey Parker Games Ltd, account number 47 50 10 60 , sort code 30-97-24, IBAN # GB19 LOYD 3097 2447 5010 60, Swift/BIC code LOYDGB21306** at the following address: **LloydsTSB Bank plc, 3 King Street, Saffron Walden, Essex, CB10 1HF, England, United Kingdom**. Or by credit card using **Visa/Mastercard or American Express** (*please ask for the appropriate credit card form*) or by **Sterling cheque** made payable to Geoffrey Parker Games Ltd.

CANCELLATIONS: As all goods are made to order to customers specification and may also be personalised, cancellations cannot be accepted once the order has been confirmed.

MINIMUM ORDER: There is **NO** minimum order requirements.

COLOURS: There are currently 12 Dauphin leather colours & 2 Automotive Hide colours within our ranges. Plus a special selection of exotic Water Snake, Alligator etc

GUARANTEE: *Geoffrey Parker* guarantees to repair any manufacturing fault free of charge. For other repairs (such as wear & tear) please advise problem before returning any item in case this can be remedied by other means.

WORKSHOP VISITS: These are positively encouraged by appointment (we are 1 hour by train from London, 30 minutes from Stansted airport).

BRANDING: All items will be branded with "*Geoffrey Parker*" logo unless otherwise requested. For company logos or special typefaces a die making charge of £54 applies.

PERSONALISATION: Our stock typeface is **TIMES NEW ROMAN** available in upper & lower case. We are please to initial items FREE OF CHARGE for subsequent extra embossings please add £5 each. Embossings can be made in gold or silver (our special Dauphin leather does not work well for "blind" embossing).

DELIVERIES & LEAD TIMES: We will endeavour to deliver in the timescale advised on confirmation of your order (at off peak times normally 6 to 8 weeks, at busy times like Christmas this may be extended), however, we cannot guarantee in case of unforeseen delays in material supply or illness etc in the workshops. Should there be a potential delay, we will inform you as soon as we know this may delay dispatch of your goods.

TRANSIT DAMAGE: *Geoffrey Parker Games Ltd* MUST be informed in writing within **48hrs** of receipt of damaged goods or any shortages. The packaging should be retained for possible inspection & the delivery company's documentation should be duly noted that the package(s) were received in a damaged state. If at all possible photographs should be taken of the packaging & goods damage. **DO NOT** return any goods or packaging without prior written permission from *Geoffrey Parker Games Ltd*. Reports of damage and/or loss received after 48 hours receipt cannot be entertained.

COPYRIGHT: All items & designs are copyrighted to *Geoffrey Parker Games Ltd* & are protected by ACID. Any infringements of our design rights will be rigourously legally enforced.

Tel + 44 (0) 1799 599 100 Fax + 44 (0) 1799 599 733 E-mail: bespoke@geoffreyparker.com Web: www.geoffreyparker.com

Vat # GB 879 8961 28

Piglets Corner - Upper Green - Wimbish Village - Saffron Walden - Essex CB10 2XJ, England

Co. Reg # 6114500

Geoffrey Parker Games Ltd

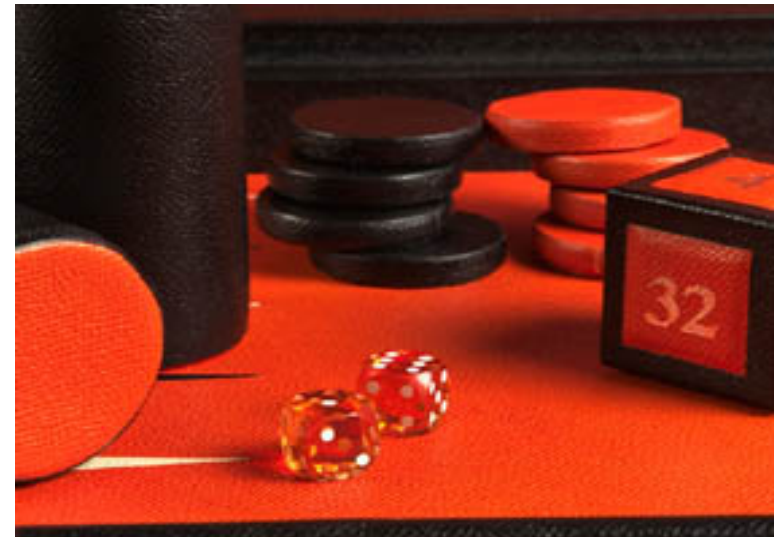
The World's finest board games, hand made in our English workshops

Bespoke: *BACKGAMMON, Championship Class, attaché*

Hand built to order - full leather case & inlaid leather playing field (no stitching to slow play). Nickel or gold-plated locks/handle plates. Hand stitched traditional solid leather carrying handle. Uncrushable dice cups with trips to prevent unfair play. Ball cornered precision dice as standard. The stones (or Checkers) we designed with formed World Champion Paul Magriel & are full leather, fine edged & weighted. A giant inlaid leather double cube completes this magnificent piece of craftsmanship.



B-89/Champ



Ref #	Attache cases	Size	USD \$	GB £	Euro €
B-89/Champ	Competition size	51mm/2" dia, stones, case closed: 650 x 410 x 85 mm (25.5" x 16.1" x 3.25")	\$4,760	£2,975	€ 3,570
B-87/Champ	Tournament size	44.5mm/1.75" dia, stones, case closed: 605 x 375 x 85 mm (23.8" x 14.75" x 3.25")	\$4,720	£2,950	€ 3,540
B-86/Champ	Challenge size	38mm/1.5" dia, stones, case closed: 517 x 335 x 85 mm (20.3" x 13.25" x 3.25")	\$4,352	£2,720	€ 3,264
B-85/Champ	Fireside size	32mm/1.25" dia, stones, case closed: 415 x 297 x 85 mm (16.35" x 11.65" x 3.25")	\$3,993	£2,495	€ 2,995
B-83/Champ	Compact Travel size	25.4mm/1" dia, stones, case closed: 325 x 228 x 60 mm (12.75" x 9" x 2.3")	\$2,793	£1,745	€ 2,094

Tel + 44 (0) 1799 599 100 Fax + 44 (0) 1799 599 733 E-mail: bespoke@geoffreyparker.com Web: www.geoffreyparker.com

Piglets Corner - Upper Green - Wimbish Village - Saffron Walden - Essex CB10 2XJ, England

Geoffrey Parker Games Ltd

The World's finest board games, hand made in our English workshops

Bespoke: **BACKGAMMON, Contemporary Class, attaché**

Combining the modern with the traditional. Hand built to order - full leather case & inlaid leather playing field (no stitching to slow play). Nickel plated locks/handle plates. Hand stitched traditional solid leather carrying handle. Uncrushable dice cups with trips to prevent unfair play. Ball cornered precision dice as standard. Inlaid leather & nickel stones & matching giant 2" (51mm) Doubling cube makes this board fit beautifully within any contemporary setting, whilst playing to championship standards.



B-89/CS



Ref #	Attache cases	Size	USD \$	GB £	Euro €
B-89/CS	Competition size	51mm/2" dia, stones, case closed: 650 x 410 x 85 mm (25.5" x 16.1" x 3.25")	\$4,776	£2,985	€ 3,582
B-87/CS	Tournament size	44.5mm/1.75" dia, stones, case closed: 605 x 375 x 85 mm (23.8" x 14.75" x 3.25")	\$4,632	£2,895	€ 3,474
B-86/CS	Challenge size	38mm/1.5" dia, stones, case closed: 517 x 335 x 85 mm (20.3" x 13.25" x 3.25")	\$4,157	£2,598	€ 3,117
B-85/CS	Fireside size	32mm/1.25" dia, stones, case closed: 415 x 297 x 85 mm (16.35" x 11.65" x 3.25")	\$3,663	£2,290	€ 2,748
B-83/CS	Compact Travel size	25.4mm/1" dia, stones, case closed: 325 x 228 x 60 mm (12.75" x 9" x 2.3")	\$2,688	£1,680	€ 2,016

Tel + 44 (0) 1799 599 100 Fax + 44 (0) 1799 599 733 E-mail: bespoke@geoffreyparker.com Web: www.geoffreyparker.com

Piglets Corner - Upper Green - Wimbish Village - Saffron Walden - Essex CB10 2XJ, England

Geoffrey Parker Games Ltd

The World's finest board games, hand made in our English workshops

Bespoke: *BACKGAMMON, Mediterranean Class, attaché*

For those Backgammon players who like a "noisy" game but also require the ultimate in luxury, we have twinned the two ancient and traditional crafts of the wood-worker and the leather-worker to stunning effect. Hand built to order - full leather case & with marquetry inlaid veneered playing field. Nickel plated locks/handle plates. Hand stitched traditional solid leather carrying handle. Uncrushable dice cups with trips to prevent unfair play. Ball cornered precision dice as standard. Inlaid leather, veneer & nickel stones with matching giant inlaid leather & nickel 2" (51mm) Doubling cube. Available with 3 veneered fields: Macassar Ebony, figured Sycamore & Burr Walnut.



Macassar Ebony



Figured Sycamore

Burr Walnut



Ref #	Attache cases	Size	USD \$	GB £	Euro €
B-87/CS-MED	Tournament size	44.5mm/1.75" dia, stones, case closed: 605 x 375 x 85 mm (23.8" x 14.75" x 3.25")	\$4,984	£3,115	€ 3,738

Other sizes can be made for a minimum of 10 pieces per veneer

Tel + 44 (0) 1799 599 100 Fax + 44 (0) 1799 599 733 E-mail: bespoke@geoffreyparker.com Web: www.geoffreyparker.com
 Piglets Corner - Upper Green - Wimbish Village - Saffron Walden - Essex CB10 2XJ, England

Geoffrey Parker Games Ltd

The World's finest board games, hand made in our English workshops

Bespoke: BACKGAMMON, Automotive Hide, Contemporary Class, attaché

Combining the modern with the traditional. Hand built to order - full Automotive hide case & inlaid Dauphin leather playing field (no stitching to slow play). Nickel plated locks/handle plates. Hand stitched traditional solid leather carrying handle. Uncrushable dice cups with trips to prevent unfair play. Ball cornered precision dice as standard. Inlaid leather & nickel stones & matching giant 2" (51mm) Doubling cube. For life in the "fast lane" this modern super-car leather adds a cutting edge to this masterpiece.



B-89/Auto/CS



Ref #	Attache cases	Size	USD \$	GB £	Euro €
B-89/Auto/CS	Competition size	51mm/2" dia, stones, case closed: 650 x 410 x 85 mm (25.5" x 16.1" x 3.25")	\$4,824	£3,015	€ 3,618
B-87/Auto/CS	Tournament size	44.5mm/1.75" dia, stones, case closed: 605 x 375 x 85 mm (23.8" x 14.75" x 3.25")	\$4,768	£2,980	€ 3,576
B-86/Auto/CS	Challenge size	38mm/1.5" dia, stones, case closed: 517 x 335 x 85 mm (20.3" x 13.25" x 3.25")	\$4,160	£2,600	€ 3,120
B-85/Auto/CS	Fireside size	32mm/1.25" dia, stones, case closed: 415 x 297 x 85 mm (16.35" x 11.65" x 3.25")	\$3,680	£2,300	€ 2,760
B-83/Auto/CS	Compact Travel size	25.4mm/1" dia, stones, case closed: 325 x 228 x 60 mm (12.75" x 9" x 2.3")	\$2,720	£1,700	€ 2,040

Tel + 44 (0) 1799 599 100 Fax + 44 (0) 1799 599 733 E-mail: bespoke@geoffreyparker.com Web: www.geoffreyparker.com

Piglets Corner - Upper Green - Wimbish Village - Saffron Walden - Essex CB10 2XJ, England

Geoffrey Parker Games Ltd

The World's finest board games, hand made in our English workshops

Bespoke: BACKGAMMON, Automotive Hide, Contemporary Class, attaché

Our leather technicians have brought the drama of the race-track to the gaming table by creating a leather that looks exactly like Carbon Fibre! However, instead of being rock hard and unpleasant to play on, the softness of the leather allows for a quite game whilst retaining the element of speed of play. Hand built to order - full "Carbon Fibre" leather playing field (no stitching to slow play). Nickel plated locks/handle plates. Hand stitched traditional solid leather carrying handle. Uncrushable dice cups with trips to prevent unfair play. Ball cornered precision dice as standard. Inlaid leather & nickel stones & matching giant 2" (51mm) Doubling cube. Currently we offer just one colour combination in Back CF case and field with silver and orange coloured CF points.



B-86CF/CS



Ref #	Attache cases	Size	USD \$	GB £	Euro €
B-89/CF/CS	Competition size	51mm/2" dia, stones, case closed: 650 x 410 x 85 mm (25.5" x 16.1" x 3.25")	\$4,824	£3,015	€ 3,618
B-87/CF/CS	Tournament size	44.5mm/1.75" dia, stones, case closed: 605 x 375 x 85 mm (23.8" x 14.75" x 3.25")	\$4,768	£2,980	€ 3,576
B-86/CF/CS	Challenge size	38mm/1.5" dia, stones, case closed: 517 x 335 x 85 mm (20.3" x 13.25" x 3.25")	\$4,160	£2,600	€ 3,120
B-85/CF/CS	Fireside size	32mm/1.25" dia, stones, case closed: 415 x 297 x 85 mm (16.35" x 11.65" x 3.25")	\$3,680	£2,300	€ 2,760
B-83/CF/CS	Compact Travel size	25.4mm/1" dia, stones, case closed: 325 x 228 x 60 mm (12.75" x 9" x 2.3")	\$2,720	£1,700	€ 2,040

Tel + 44 (0) 1799 599 100 Fax + 44 (0) 1799 599 733 E-mail: bespoke@geoffreyparker.com Web: www.geoffreyparker.com

Piglets Corner - Upper Green - Wimbish Village - Saffron Walden - Essex CB10 2XJ, England

Geoffrey Parker Games Ltd

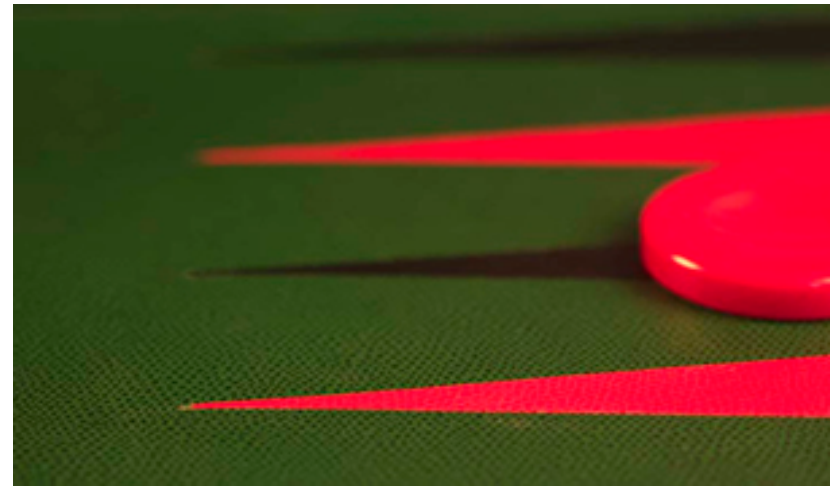
The World's finest board games, hand made in our English workshops

Bespoke: *BACKGAMMON, Prestige Class, attaché*

Our Prestige class Backgammon boards are bound in Dauphin leathers & has a beautifully hand inlaid leather playing field - super fast - no stitching to slow play down. A solid wood carcass lies beneath the leather covered case which is secured by a pair of solid brass combination either gold or nickel plated to prevent tarnishing (key locks are used on the # 83/Prest Compact Travel case). Acrylic stones/checkers, flat one side, finger dished the other and an acrylic Doubling cube are provided along with inlaid decals to indicate doubling cube acceptance by either player. Also a "Crawford/Jacoby" leather indicator dics is stowed within the hand bound leather dice cups, complete with trips to prevent unfair play. Precision dice are provided as standard on "Competition" & "Tournament" sized boards.



B-89/Prest



Ref #	Attache cases	Size	USD \$	GB £	Euro €
B-89/Prest	Competition size	51mm/2" dia, stones, case closed: 650 x 410 x 85 mm (25.5" x 16.1" x 3.25")	\$3,783	£2,365	€ 2,838
B-87/Prest	Tournament size	44.5mm/1.75" dia, stones, case closed: 605 x 375 x 85 mm (23.8" x 14.75" x 3.25")	\$3,520	£2,200	€ 2,640
B-86/Prest	Challenge size	38mm/1.5" dia, stones, case closed: 517 x 335 x 85 mm (20.3" x 13.25" x 3.25")	\$3,192	£1,995	€ 2,394
B-85/Prest	Fireside size	32mm/1.25" dia, stones, case closed: 415 x 297 x 85 mm (16.35" x 11.65" x 3.25")	\$2,864	£1,790	€ 2,148
B-83/Prest	Compact Travel size	25.4mm/1" dia, stones, case closed: 325 x 228 x 60 mm (12.75" x 9" x 2.3")	\$1,999	£1,249	€ 1,499

Tel + 44 (0) 1799 599 100 Fax + 44 (0) 1799 599 733 E-mail: bespoke@geoffreyparker.com Web: www.geoffreyparker.com

Piglets Corner - Upper Green - Wimbish Village - Saffron Walden - Essex CB10 2XJ, England

Geoffrey Parker Games Ltd

The World's finest board games, hand made in our English workshops

Bespoke: BACKGAMMON, Automotive Hide, Prestige Class, attaché

Bound in super-car Automotive hide with a Dauphin leather hand inlaid leather playing field - super fast - no stitching to slow play down. A solid wood carcass lies beneath the leather covered case which is secured by a pair of solid brass combination either gold or nickel plated to prevent tarnishing (key locks are used on the # 83/Prest Compact Travel case). Acrylic stones/checkers, flat one side, finger dished the other and an acrylic Doubling cube are provided along with inlaid decals to indicate doubling cube acceptance by either player. Also a "Crawford/Jacoby" leather indicator dics is stowed within the hand bound leather dice cups, complete with trips to prevent unfair play. Precision dice are provided as standard on "Competition" & "Tournament" sized boards.



B-86/Auto/Prest

Ref #	Attache cases	Size	USD \$	GB £	Euro €
B-89/Auto/Prest	Competition size	51mm/2" dia, stones, case closed: 650 x 410 x 85 mm (25.5" x 16.1" x 3.25")	\$3,575	£2,235	€ 2,682
B-87/Auto/Prest	Tournament size	44.5mm/1.75" dia, stones, case closed: 605 x 375 x 85 mm (23.8" x 14.75" x 3.25")	\$3,400	£2,125	€ 2,550
B-86/Auto/Prest	Challenge size	38mm/1.5" dia, stones, case closed: 517 x 335 x 85 mm (20.3" x 13.25" x 3.25")	\$3,224	£2,015	€ 2,418
B-85/Auto/Prest	Fireside size	32mm/1.25" dia, stones, case closed: 415 x 297 x 85 mm (16.35" x 11.65" x 3.25")	\$2,848	£1,780	€ 2,136
B-83/Auto/Prest	Compact Travel size	25.4mm/1" dia, stones, case closed: 325 x 228 x 60 mm (12.75" x 9" x 2.3")	\$2,000	£1,250	€ 1,500

Tel + 44 (0) 1799 599 100 Fax + 44 (0) 1799 599 733 E-mail: bespoke@geoffreyparker.com Web: www.geoffreyparker.com

Piglets Corner - Upper Green - Wimbish Village - Saffron Walden - Essex CB10 2XJ, England

Geoffrey Parker Games Ltd

The World's finest board games, hand made in our English workshops

Bespoke: *BACKGAMMON, Club Class, attaché*

For those who prefer a non-leather playing field, our Club Class boards are bound in Dauphin leathers with a hand inlaid finest Billiard cloth playing field with leather points (this is NOT a felt, which will fluff-up over time) - super fast - no stitching to slow play down. A solid wood carcass lies beneath the leather covered case which is secured by a pair of solid brass combination either gold or nickel plated to prevent tarnishing (key locks are used on the # 83/Prest Compact Travel case). Acrylic stones/checkers, flat one side, finger dished the other and an acrylic Doubling cube are provided along with inlaid decals to indicate doubling cube acceptance by either player. Also a "Crawford/Jacoby" leather indicator dics is stowed within the hand bound leather dice cups, complete with trips to prevent unfair play. Precision dice are provided as standard on "Competition" & "Tournament" sized boards.



B-89/Club



Ref #	Attache cases	Size	USD \$	GB £	Euro €
B-89/Club	Competition size	51mm/2" dia, stones, case closed: 650 x 410 x 85 mm (25.5" x 16.1" x 3.25")	\$3,783	£2,365	€ 2,838
B-87/Club	Tournament size	44.5mm/1.75" dia, stones, case closed: 605 x 375 x 85 mm (23.8" x 14.75" x 3.25")	\$3,520	£2,200	€ 2,640
B-86/Club	Challenge size	38mm/1.5" dia, stones, case closed: 517 x 335 x 85 mm (20.3" x 13.25" x 3.25")	\$3,192	£1,995	€ 2,394
B-85/Club	Fireside size	32mm/1.25" dia, stones, case closed: 415 x 297 x 85 mm (16.35" x 11.65" x 3.25")	\$2,864	£1,790	€ 2,148
B-83/Club	Compact Travel size	25.4mm/1" dia, stones, case closed: 325 x 228 x 60 mm (12.75" x 9" x 2.3")	\$1,999	£1,249	€ 1,499

Tel + 44 (0) 1799 599 100 Fax + 44 (0) 1799 599 733 E-mail: bespoke@geoffreyparker.com Web: www.geoffreyparker.com

Piglets Corner - Upper Green - Wimbish Village - Saffron Walden - Essex CB10 2XJ, England

Geoffrey Parker Games Ltd

The World's finest board games, hand made in our English workshops

Bespoke: *BACKGAMMON, Championship Class, table-top edition*

For those who play at home rather than travel with their boards, this table-top version is exactly the same as its counterpart attache version except for the removal of the locks and carrying handle. However, it retains the ability to be folded in half for storage when not in use. Hand built to order - full leather tray & inlaid leather playing field (no stitching to slow play). Uncrushable dice cups with trips to prevent unfair play. Ball cornered precision dice as standard (Competition & Tournament size only). The stones (or Checkers) we designed with formed World Champion Paul Magriel & are full leather, fine edged & weighted. A giant inlaid leather doubling cube completes this magnificent piece of craftsmanship. Non-slip Suedette trim to underside of tray.



B-89TT/Champ

Ref #	Table-top	Size	USD \$	GB £	Euro €
B-89TT/Champ	Competition size	51mm/2" dia stones, tray open 650 x 822 x 42.5 mm (25.5" x 32.3" x 1.625")	\$3,791	£2,370	€ 2,843
B-87TT/Champ	Tournament size	44.5mm/1.75" dia, stones, tray open: 605 x 752 x 42.5 mm (23.8" x 29.6" x 1.625")	\$3,656	£2,285	€ 2,742
B-86TT/Champ	Challenge size	38mm/1.5" dia, stones, tray open: 517 x 672 x 42.5 mm (2" x 26.6" x 1.625")	\$3,408	£2,130	€ 2,556
B-85TT/Champ	Fireside size	32mm/1.25" dia, stones, tray open: 415 x 596 x 42.5 mm (16.35" x 23.4" x 1.625")	\$3,384	£2,115	€ 2,538

Tel + 44 (0) 1799 599 100 Fax + 44 (0) 1799 599 733 E-mail: bespoke@geoffreyparker.com Web: www.geoffreyparker.com

Piglets Corner - Upper Green - Wimbish Village - Saffron Walden - Essex CB10 2XJ, England

Geoffrey Parker Games Ltd

The World's finest board games, hand made in our English workshops

Bespoke: *BACKGAMMON, Contemporary Class, table-top edition*

For those who play at home rather than travel with their boards, this table-top version is exactly the same as its counterpart attache version except for the removal of the locks and carrying handle. However, it retains the ability to be folded in half for storage when not in use. Hand built to order - full leather tray & inlaid leather playing field (no stitching to slow play). Uncrushable dice cups with trips to prevent unfair play. Ball cornered precision dice as standard (Competition & Tournament size only). The stones (or Checkers) are inlaid leather with nickel trim with a matching giant inlaid leather Doubling Cube, compliments any contemporary scene. Non-slip Suedette trim to underside of tray.



B-86TT/CS



Ref #	Table-top	Size	USD \$	GB £	Euro €
B-89TT/CS	Competition size	51mm/2" dia stones, tray open 650 x 822 x 42.5 mm (25.5" x 32.3" x 1.625") [Ⓜ]	\$3,976	£2,485	€ 2,982
B-87TT/CS	Tournament size	44.5mm/1.75" dia, stones, tray open: 605 x 752 x 42.5 mm (23.8" x 29.6" x 1.625") [Ⓜ]	\$3,864	£2,415	€ 2,898
B-86TT/CS	Challenge size	38mm/1.5" dia, stones, tray open: 517 x 672 x 42.5 mm (2" x 26.6" x 1.625") [Ⓜ]	\$3,593	£2,245	€ 2,695
B-85TT/CS	Fireside size	32mm/1.25" dia, stones, tray open: 415 x 596 x 42.5 mm (16.35" x 23.4" x 1.625") [Ⓜ]	\$2,929	£1,830	€ 2,196

Tel + 44 (0) 1799 599 100 Fax + 44 (0) 1799 599 733 E-mail: bespoke@geoffreyparker.com Web: www.geoffreyparker.com

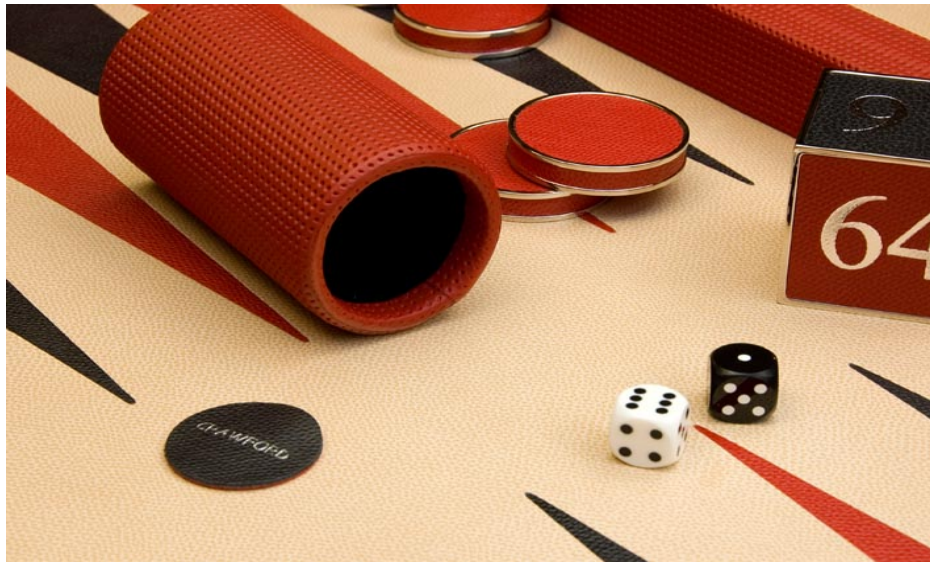
Piglets Corner - Upper Green - Wimbish Village - Saffron Walden - Essex CB10 2XJ, England

Geoffrey Parker Games Ltd

The World's finest board games, hand made in our English workshops

Bespoke: *BACKGAMMON, Contemporary Class-Automotive/"Carbon Fibre" edition, table-top edition*

For those who play at home rather than travel with their boards, this table-top version is exactly the same as its counterpart attache version except for the removal of the locks and carrying handle. However, it retains the ability to be folded in half for storage when not in use. Hand built to order - full AUTOMOTIVE leather tray & inlaid DAUPHIN leather playing field (no stitching to slow play) or in our special "CARBON FIBRE leather thoughtout. Uncrushable dice cups with trips to prevent unfair play. Ball cornered precision dice as standard (Competition & Tournament size only). The stones (or Checkers) are inlaid leather with nickel trim with a matching giant inlaid leather Doubling Cube, compliments any contemporary scene. Non-slip Suedette trim to underside of tray.



Ref #	Table-top	Size	USD \$	GB £	Euro €
B-89TT/CS	Competition size	51mm/2" dia stones, tray open 650 x 822 x 42.5 mm (25.5" x 32.3" x 1.625") ²	\$4,000	£2,500	€ 3,000
B-87TT/CS	Tournament size	44.5mm/1.75" dia, stones, tray open: 605 x 752 x 42.5 mm (23.8" x 29.6" x 1.625") ²	\$3,896	£2,435	€ 2,922
B-86TT/CS	Challenge size	38mm/1.5" dia, stones, tray open: 517 x 672 x 42.5 mm (2" x 26.6" x 1.625") ²	\$3,615	£2,260	€ 2,711
B-85TT/CS	Fireside size	32mm/1.25" dia, stones, tray open: 415 x 596 x 42.5 mm (16.35" x 23.4" x 1.625") ²	\$2,952	£1,845	€ 2,214

Tel + 44 (0) 1799 599 100 Fax + 44 (0) 1799 599 733 E-mail: bespoke@geoffreyparker.com Web: www.geoffreyparker.com

Piglets Corner - Upper Green - Wimbish Village - Saffron Walden - Essex CB10 2XJ, England

Geoffrey Parker Games Ltd

The World's finest board games, hand made in our English workshops

Bespoke: BACKGAMMON, Mediterranean Class, table-top edition

For those who play at home rather than travel with their boards, this table-top version is exactly the same as its counterpart attache version except for the removal of the locks and carrying handle. However, it retains the ability to be folded in half for storage when not in use. Hand built to order - full leather tray & marquetry inlaid veneered playing field for those who prefer a more noisy name. Uncrushable dice cups with trips to prevent unfair play. Ball cornered precision dice as standard (Competition & Tournament size only). The stones (or Checkers) are inlaid leather & veneer with nickel trim with a matching giant inlaid leather & nickel Doubling Cube. Non-slip Suedette trim to underside of tray. Burr Walnut, Macassar Ebony or figured Sycamore are available.



Ref #	Table-top	Size	USD \$	GB £	Euro €
B-87TT/MED/CS	Tournament size	44.5mm/1.75" dia, stones, tray open: 605 x 752 x 42.5 mm (23.8" x 29.6" x 1.625") ²	\$4,475	£2,797	€ 3,356

Other sizes can be made for a minimum of 10 pieces per veneer

Tel + 44 (0) 1799 599 100 Fax + 44 (0) 1799 599 733 E-mail: bespoke@geoffreyparker.com Web: www.geoffreyparker.com

Piglets Corner - Upper Green - Wimbish Village - Saffron Walden - Essex CB10 2XJ, England

Geoffrey Parker Games Ltd

The World's finest board games, hand made in our English workshops

Bespoke: **BACKGAMMON, Prestige Class, table-top edition**

For those who play at home rather than travel with their boards, this table-top version is exactly the same as its counterpart attache version except for the removal of the locks and carrying handle. However, it retains the ability to be folded in half for storage when not in use. Hand built to order - full leather tray & inlaid leather playing field. Uncrushable dice cups with trips to prevent unfair play. Ball cornered precision dice as standard (Competition & Tournament sizes only). The stones (or Checkers) are acrylic with finger dish one side for contemporary play or flat the other for more traditional use. Acrylic Doubling Cube. Non-slip Suedette trim to underside of tray.



B-86TT/Prest



Ref #	Attache cases	Size	USD \$	GB £	Euro €
B-89TT/Prest	Competition size	51mm/2" dia stones, tray open 650 x 822 x 42.5 mm (25.5" x 32.3" x 1.625")	\$2,920	£1,825	€ 2,190
B-87TT/Prest	Tournament size	44.5mm/1.75" dia, stones, tray open: 605 x 752 x 42.5 mm (23.8" x 29.6" x 1.625")	\$2,808	£1,755	€ 2,106
B-86TT/Prest	Challenge size	38mm/1.5" dia, stones, tray open: 517 x 672 x 42.5 mm (2" x 26.6" x 1.625")	\$2,600	£1,625	€ 1,950
B-85TT/Prest	Fireside size	32mm/1.25" dia, stones, tray open: 415 x 596 x 42.5 mm (16.35" x 23.4" x 1.625")	\$2,143	£1,340	€ 1,607

Tel + 44 (0) 1799 599 100 Fax + 44 (0) 1799 599 733 E-mail: bespoke@geoffreyparker.com Web: www.geoffreyparker.com

Piglets Corner - Upper Green - Wimbish Village - Saffron Walden - Essex CB10 2XJ, England

Geoffrey Parker Games Ltd

The World's finest board games, hand made in our English workshops

Bespoke: **BACKGAMMON, Club Class, table-top edition**

For those who play at home rather than travel with their boards, this table-top version is exactly the same as its counterpart attache version except for the removal of the locks and carrying handle. However, it retains the ability to be folded in half for storage when not in use. Hand built to order - full leather tray & inlaid Billiard cloth playing field with inlaid leather points. Uncrushable dice cups with trips to prevent unfair play. Ball cornered precision dice as standard (Competition & Tournament sizes only). The stones (or Checkers) are acrylic with finger dish one side for contemporary play or flat the other for more traditional use. Acrylic Doubling Cube. Non-slip Suedette trim to underside of tray.



B-87TT/Club



Ref #	Attache cases	Size	USD \$	GB £	Euro €
B-89TT/Club	Competition size	51mm/2" dia stones, tray open 650 x 822 x 42.5 mm (25.5" x 32.3" x 1.625")	\$2,920	£1,825	€ 2,190
B-87TT/Club	Tournament size	44.5mm/1.75" dia, stones, tray open: 605 x 752 x 42.5 mm (23.8" x 29.6" x 1.625")	\$2,808	£1,755	€ 2,106
B-86TT/Club	Challenge size	38mm/1.5" dia, stones, tray open: 517 x 672 x 42.5 mm (2" x 26.6" x 1.625")	\$2,600	£1,625	€ 1,950
B-85TT/Club	Fireside size	32mm/1.25" dia, stones, tray open: 415 x 596 x 42.5 mm (16.35" x 23.4" x 1.625")	\$2,143	£1,340	€ 1,607

Tel + 44 (0) 1799 599 100 Fax + 44 (0) 1799 599 733 E-mail: bespoke@geoffreyparker.com Web: www.geoffreyparker.com

Piglets Corner - Upper Green - Wimbish Village - Saffron Walden - Essex CB10 2XJ, England

Geoffrey Parker Games Ltd

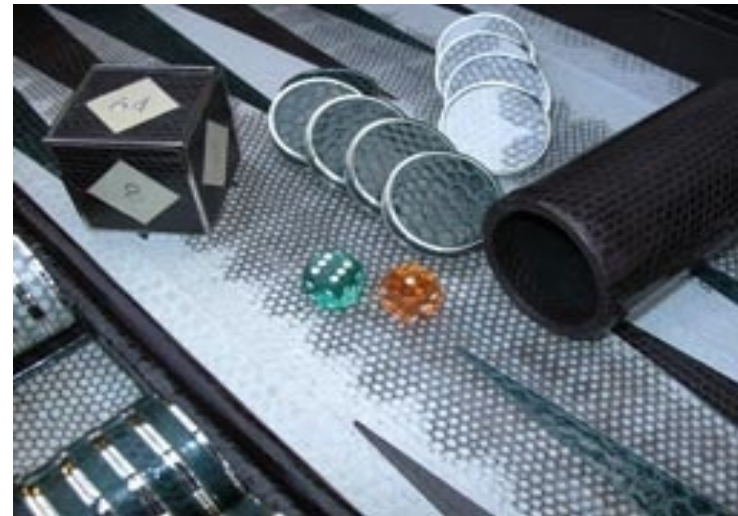
The World's finest board games, hand made in our English workshops

Exceptional Pieces: *BACKGAMMON, Water Snake, attaché*

Bound in exotic Water Snake leather to case & field, complete with Water Snake & nickel stones/checkers with matching inlaid leather & nickel giant Doubling cube (acrylic on Fireside & Compact Travel editions), nickel locks & a hand stitched solid leather carrying handle. Precision dice as standard on Competition & Tournament size boards.



E-87WS/CS



Ref #	Attache cases	Size	USD \$	GB £	Euro €
E-87WS/CS	Tournament size	44.5mm/1.75" dia, stones, case closed: 605 x 375 x 85 mm (23.8" x 14.75" x 3.25")	\$6,503	£4,065	€ 4,877
E-86WS/CS	Challenge size	38mm/1.5" dia, stones, case closed: 517 x 335 x 85 mm (20.3" x 13.25" x 3.25")	TBA	TBA	TBA
E-85WS/CS	Fireside size	32mm/1.25" dia, stones, case closed: 415 x 297 x 85 mm (16.35" x 11.65" x 3.25")	TBA	TBA	TBA
E-83WS/CS	Compact Travel	25.4mm/1" dia, stones, case closed: 325 x 228 x 60 mm (12.75" x 9" x 2.3")	TBA	TBA	TBA

Tel + 44 (0) 1799 599 100 Fax + 44 (0) 1799 599 733 E-mail: bespoke@geoffreyparker.com Web: www.geoffreyparker.com

Piglets Corner - Upper Green - Wimbish Village - Saffron Walden - Essex CB10 2XJ, England

Geoffrey Parker Games Ltd

The World's finest board games, hand made in our English workshops

Exceptional Pieces: *BACKGAMMON, Water Snake with Swarovski crystals, attaché*

Bound in exotic Water Snake leather to case & field. Trimmed to inside case edges with Swarovski crystals & to the edges of the Water Snake & nickel stones/checkers. An inlaid leather & nickel giant Doubling cube (acrylic on Fireside & Compact Travel editions), nickel locks & a hand stitched solid leather carrying handle. Precision dice as standard on Competition & Tournament size boards.

E-87WS/Bling



Ref #	Attache cases	Size	USD \$	GB £	Euro €
E-87WS/Bling	Tournament size	44.5mm/1.75" dia, stones, case closed: 605 x 375 x 85 mm (23.8" x 14.75" x 3.25")	\$8,600	£5,375	€ 6,450
E-86WS/Bling	Challenge size	38mm/1.5" dia, stones, case closed: 517 x 335 x 85 mm (20.3" x 13.25" x 3.25")	TBA	TBA	TBA
E-85WS/Bling	Fireside size	32mm/1.25" dia, stones, case closed: 415 x 297 x 85 mm (16.35" x 11.65" x 3.25")	\$7,992	£4,995	€ 5,994
E-83WS/Bling	Compact Travel	25.4mm/1" dia, stones, case closed: 325 x 228 x 60 mm (12.75" x 9" x 2.3")	TBA	TBA	TBA

Tel + 44 (0) 1799 599 100 Fax + 44 (0) 1799 599 733 E-mail: bespoke@geoffreyparker.com Web: www.geoffreyparker.com

Piglets Corner - Upper Green - Wimbish Village - Saffron Walden - Essex CB10 2XJ, England

Geoffrey Parker Games Ltd

The World's finest board games, hand made in our English workshops

Exceptional Pieces: *BACKGAMMON, Alligator & Shagreen with Sterling silver stones/checkers, attaché*

Exotic Alligator is twinned with Shagreen (Stingray skin) to stunning effect. Specially selected Alligator skin is used to bind the case, with "Art Nouveau" buffed Shagreen for the intricate inlaid playing field. Each Backgammon stones/checker is made in hall-marked Sterling silver & inlaid with matching Shagreen. Alligator dice cups, lined in suede to deaden rattle. Precision ball cornered dice as standard. Nickel combination locks & a hand stitched Alligator carrying handle. Matching Alligator Doubling Cube.

B-85/Allig/SS



Ref #	Attache cases	Size	USD \$	GB £	Euro €
E-89/Allig/SS	Competition size	51mm/2" dia, stones, case closed: 650 x 410 x 85 mm (25.5" x 16.1" x 3.25")	TBA	TBA	TBA
B-87/Allig/SS	Tournament size	44.5mm/1.75" dia, stones, case closed: 605 x 375 x 85 mm (23.8" x 14.75" x 3.25")	TBA	TBA	TBA
B-86/Allig/SS	Challenge size	38mm/1.5" dia, stones, case closed: 517 x 335 x 85 mm (20.3" x 13.25" x 3.25")	TBA	TBA	TBA
B-85/Allig/SS	Fireside size	32mm/1.25" dia, stones, case closed: 415 x 297 x 85 mm (16.35" x 11.65" x 3.25")	\$18,359	£11,475	€ 13,769
B-83/Allig/SS	Compact Travel	25.4mm/1" dia, stones, case closed: 325 x 228 x 60 mm (12.75" x 9" x 2.3")	TBA	TBA	TBA

Tel + 44 (0) 1799 599 100 Fax + 44 (0) 1799 599 733 E-mail: bespoke@geoffreyparker.com Web: www.geoffreyparker.com

Piglets Corner - Upper Green - Wimbish Village - Saffron Walden - Essex CB10 2XJ, England

Geoffrey Parker Games Ltd

The World's finest board games, hand made in our English workshops

Off The Bench: *BACKGAMMON, tournament size, attaché*

Our "Off the Bench" range of Backgammon draws from our extensive knowledge gained over 50 years of making the World's finest Championship boards (see Bespoke range). These "edited luxury" Backgammons offer an affordable but luxurious board built for the avid player or those who appreciate beautiful craftsmanship. utilising today's latest technology to offer extensive designs but also to reduce labour costs, each leather playing field is specially printed in 4 colour. There are traditional Backgammon colours available but also themed boards such as our "flag" & "beach" scenes & our licensed range which includes William & Morris decorative design from the Victoria & Albert museum in London. All boards are bound in leather, with standard dice & leather dice cups & a contemporary chrome/inlaid leather carrying handle.



Union Jack



Traditional

William Morris



Monaco



Ref #	Edition	Size	USD \$	GB £	Euro €
O-445-Trad	Traditional colours	44.5mm/1.75" dia, stones, case closed: 544 x 370 x 75 mm (21.4" x 14.6" x 2.9")	\$1,577	£985	€ 1,158
O-445-Themed	Beach, flag, Monaco	44.5mm/1.75" dia, stones, case closed: 544 x 370 x 75 mm (21.4" x 14.6" x 2.9")	\$1,577	£985	€ 1,183
O-445-Lic	007, William Morris	44.5mm/1.75" dia, stones, case closed: 544 x 370 x 75 mm (21.4" x 14.6" x 2.9")	\$1,760	£1,100	€ 1,320

Tel + 44 (0) 1799 599 100 Fax + 44 (0) 1799 599 733 E-mail: bespoke@geoffreyparker.com Web: www.geoffreyparker.com

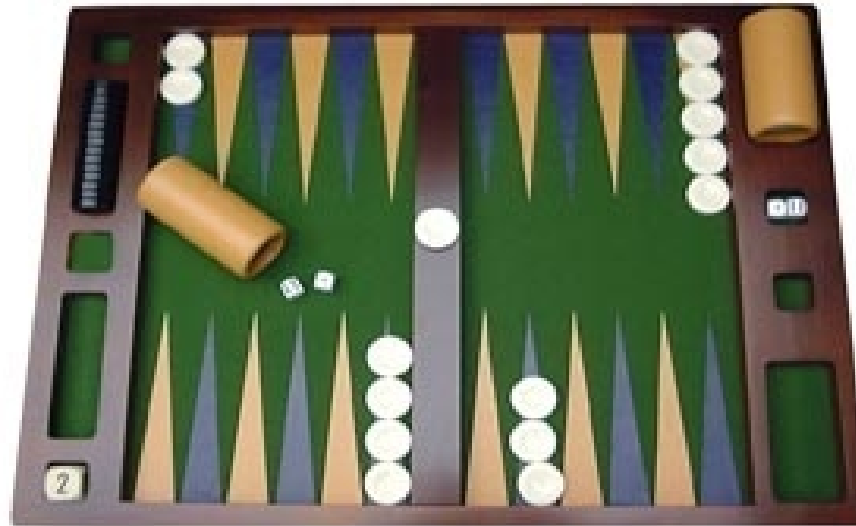
Piglets Corner - Upper Green - Wimbish Village - Saffron Walden - Essex CB10 2XJ, England

Geoffrey Parker Games Ltd

The World's finest board games, hand made in our English workshops

BACKGAMMON for club play, table-top editions

For Backgammon club use where a functional "no frills" non-folding table-top board is required. A choice of either a hand inlaid leather or Billiard cloth and leather fields are available or a printed leather field (this can have a club logo for example) within a solid Mahogany frame. Non-slip suedette to underside, these boards are available in *Tournament* size. Standard acrylic dice & Doubling cube are include as are a pair of leather-bound uncrushable dice cups with trips.



O-445/MAH/Club

Ref #	Table-top editions	Size	USD \$	GB £	Euro €
B-445/MAH/Club	Inlaid leather or BC	44.5mm/1.75" dia, stones, tray open: 510 x 685 x 32 mm (20.1" x 27" x 1.25")	\$952	£595	€ 714
O-445/MAH/Club	Printed leather	44.5mm/1.75" dia, stones, tray open: 510 x 685 x 32 mm (20.1" x 27" x 1.25")	\$849	£530	€ 637

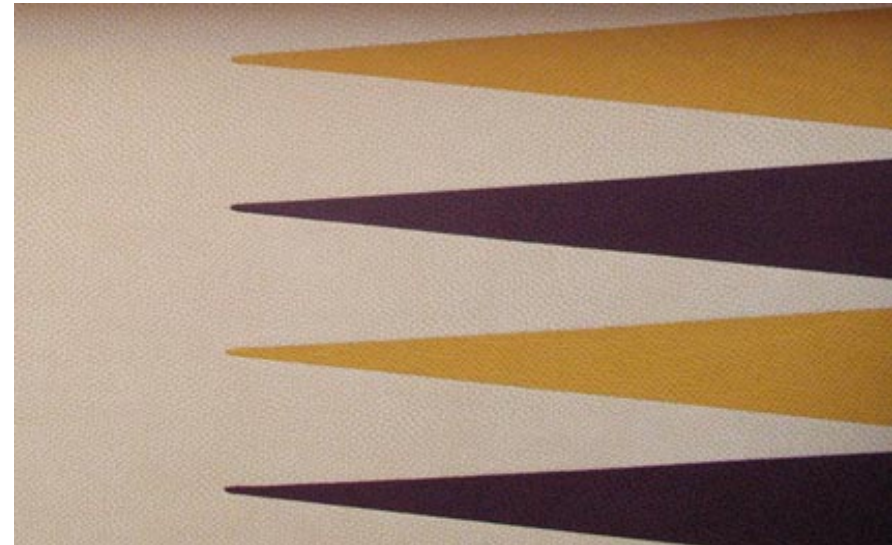
Tel + 44 (0) 1799 599 100 Fax + 44 (0) 1799 599 733 E-mail: bespoke@geoffreyparker.com Web: www.geoffreyparker.com
Piglets Corner - Upper Green - Wimbish Village - Saffron Walden - Essex CB10 2XJ, England

Geoffrey Parker Games Ltd

The World's finest board games, hand made in our English workshops

BACKGAMMON *playing field inserts & trays for customers own tables*

Full inlaid leather playing field mounted on 4mm substrate for inlaying into existing tables. Choice of over 22,500 possible colour combinations utilising our Dauphin leather colour range. In addition we can offer printed leather fields without backing.



Ref #	Pairs of fields	Size	USD \$	GB £	Euro €
B-89/Fld	Competition size	634 x 321 x 6 mm or 25" x 12.6 x 0.25" (inc 5mm/0.25" all around for fillets)	\$839	£525	€ 629
B-87/Fld	Tournament size	593 x 282 x 6 mm or 23.3" x 11.15 x 0.25" (inc 5mm/0.25" all around for fillets)	\$783	£490	€ 587
B-86/Fld	Challenge size	503 x 243 x 6 mm or 19.75" x 9.8 x 0.25" (inc 5mm/0.25" all around for fillets)	\$745	£465	€ 559
B-85/Fld	Fireside size	401 x 207 x 6 mm or 15.88.25" x 9.8 x 0.25" (inc 5mm/0.25" all around for fillets)	\$721	£450	€ 541
O-445/Fld	Tournament size	As above but in printed leather rather than inlaid by hand	\$183	£115	€ 137

Tel + 44 (0) 1799 599 100 Fax + 44 (0) 1799 599 733 E-mail: bespoke@geoffreyparker.com Web: www.geoffreyparker.com

Piglets Corner - Upper Green - Wimbish Village - Saffron Walden - Essex CB10 2XJ, England

Geoffrey Parker Games Ltd

The World's finest board games, hand made in our English workshops

BACKGAMMON - weighted leather stones/checkers, per 30

Designed with the help of former World Champion & backgammon guru, Paul Magriel back in the seventies, these fantastic stones/checkers are a real "labour of love". Each stone is constructed like papier-mache, binding glue & board together, then inserting a lead weight to bring it up to Championship requirements & then great skill & patience is required: two leather discs are applied & then taking a paring knife a leather strip is "fine edged" & then glued into position & burnished to make an "invisible" join. These are a delight to play with - super fast & as Nicholas Foulkes of GQ said "*If Hermès ever made miniature air-hockey pucks, they would look like this.*" Each stone is really a piece of leather artistry in itself & a set of 30 can take as long to build as the whole Backgammon.



Ref #	Per set of 30	Size	USD \$	GB £	Euro €
B-LS510	Competition size	51mm dia x 10mm thick (2" dia x 0.4" thick)	\$1,039	£650	€ 780
B-LS445	Tournament size	44.5mm dia x 10mm thick (1.75" dia x 0.4" thick)	\$1,024	£640	€ 1,024
B-LS380	Challenge size	38mm dia x 9mm thick (1.5" dia x 0.35" thick)	\$1,000	£625	€ 1,000
B-LS320	Fireside size	32mm dia x 7mm thick (1.25" x 0.275" thick)	\$936	£585	€ 936
B-LS254	Compact Travel size	25.4mm dia x 7mm thick (1" x 0.275" thick)☐	\$888	£555	€ 888

Tel + 44 (0) 1799 599 100 Fax + 44 (0) 1799 599 733 E-mail: bespoke@geoffreyparker.com Web: www.geoffreyparker.com

Piglets Corner - Upper Green - Wimbish Village - Saffron Walden - Essex CB10 2XJ, England

Geoffrey Parker Games Ltd

The World's finest board games, hand made in our English workshops

BACKGAMMON -Nickel trimmed leather stones/checkers, per 30

Since their introduction back in 2005, our "Contemporary" stones have become the stone/checker of choice. Fast and with a nice clicking sound, they are not only elegant but also a joy to play with (as used in the 2010 World Backgammon Championship final in Monaco). Also in this stone (as opposed to the "Championship" all leather edition) we are please to include "Magnolia" as one of the colours available for the leather inlays into nickel.



Ref #	Per set of 30	Size	USD \$	GB £	Euro €
B-CS510	Competition size	51mm dia x 10mm thick (2" dia x 0.4" thick)	\$1,239	£775	€ 929
B-CS445	Tournament size	44.5mm dia x 10mm thick (1.75" dia x 0.4" thick)	\$1,220	£763	€ 915
B-CS445-MED	Tournament size	44.5mm dia x 10mm thick (1.75" dia x 0.4" thick) - leather/veneer/nickel	\$1,320	£825	€ 990
B-CS445-WS-Bling	Tournament size	44.5 x 10mm thick (1.75" x 0.4" thick) Water Snake with Swarovski crystal inlays	\$2,728	£1,705	€ 2,046
B-CS445-WS	Tournament size	44.5 dia x 10mm thick (1.75" x 0.4" thick) - Water Snake & nickel (pian, no bling)	\$1,225	£765	€ 918
B-CS380	Challenge size	38mm dia x 9mm thick (1.5" dia x 0.35" thick)	\$1,215	£760	€ 911
B-CS320	Fireside size	32mm dia x 7mm thick (1.25" x 0.275" thick)	\$1,040	£650	€ 780
B-CS254	Compact Travel size	25.4mm dia x 7mm thick (1" x 0.275" thick)⊗	\$921	£575	€ 690

Tel + 44 (0) 1799 599 100 Fax + 44 (0) 1799 599 733 E-mail: bespoke@geoffreyparker.com Web: www.geoffreyparker.com

Piglets Corner - Upper Green - Wimbish Village - Saffron Walden - Essex CB10 2XJ, England

Geoffrey Parker Games Ltd

The World's finest board games, hand made in our English workshops

BACKGAMMON -Acrylic stones/checkers

Use both in our "Off the Bench" collection and the our Bespoke "Prestige" boards, these pearlised stones/checkers are unique in due to the double sided design, which allows "traditional" play by way of the falt side and "Mediterranean" play by way of the concave finger dish if turned over.



Ref #	Per set of 30	Size	USD \$	GB £	Euro €
B-PS510*	Competition size	51mm dia x 10mm thick (2" dia x 0.4" thick)	\$160	£100	€ 120
B-PS445*	Tournament size	44.5mm dia x 10mm thick (1.75" dia x 0.4" thick)	\$151	£95	€ 114
B-PS380*	Challenge size	38mm dia x 9mm thick (1.5" dia x 0.35" thick)	\$138	£86	€ 104
B-PS320*	Fireside size	32mm dia x 7mm thick (1.25" x 0.275" thick)	\$61	£38	€ 46
B-PS254*	Compact Travel size	25.4mm dia x 7mm thick (1" x 0.275" thick)☐	\$44	£28	€ 33
B-PS101*	Ultra Slim Travel	18mm dia x 4mm thick (0.7" x 0.16" thick)☐	\$35	£22	€ 26
B-PS555-Mag*	Magnetic	18mm dia x 3.5mm thick (0.7" dia x 0.14" thick)☐	\$42	£26	€ 32

Tel + 44 (0) 1799 599 100 Fax + 44 (0) 1799 599 733 E-mail: bespoke@geoffreyparker.com Web: www.geoffreyparker.com

Piglets Corner - Upper Green - Wimbish Village - Saffron Walden - Essex CB10 2XJ, England

Geoffrey Parker Games Ltd

The World's finest board games, hand made in our English workshops

DICE CUPS - Leather, per pair

Great in the hand - our round dice cups are uncrushable (except for the *Off the Bench* edition) however frustrated a player may get. Hand bound in leather & lined in suede to deaden the rattle, our *bespoke* cups have an in-built "trip" to prevent unfair play (except for the *Compact Travel* edition which are too small to have this). A lozenge shaped cup is also made for those without the storage space for the full competition size cup, together with our *Off the Bench* standard cup.



B-RDC/89



B-LDC/85

Ref #	Per pair	Size	USD \$	GB £	Euro €
B-RDC/89	Round/trips	60 dia x 115 mm (2.35 dia" x 4.53")	\$396	£247	€ 297
B-RDC/89-Auto	Round/trips	60 dia x 115 mm (2.35 dia" x 4.53")	\$397	£248	€ 298
B-RDC/86	Round/trips	60 dia x 92 mm (2.35" dia x 4.53")	\$393	£245	€ 294
B-RDC/86-Auto	Round/trips	60 dia x 92 mm (2.35" dia x 4.53")	TBA	£246	TBA
B-LDC/85	Lozenge/trips	86 x 52 x 40 mm (3.385" x 2.04" x 1.57")	\$446	£279	€ 334
B-RDC/83	Round/no trips	38 dia x 77 mm (1.5" dia x 3")	\$368	£230	€ 276
O-RDC/445	Round/no trips	51 dia x 88 mm (2" dia x 3.46")	\$276	£173	€ 207

Tel + 44 (0) 1799 599 100 Fax + 44 (0) 1799 599 733 E-mail: bespoke@geoffreyparker.com Web: www.geoffreyparker.com

Piglets Corner - Upper Green - Wimbish Village - Saffron Walden - Essex CB10 2XJ, England

Geoffrey Parker Games Ltd

The World's finest board games, hand made in our English workshops

BACKGAMMON - Doubling cubes, each

For Western play, the Doubling cube is essential, not only from an excitement point of view (whether used for gambling or not) but for strategy & finishing games that are a foregone conclusion. The cube is never rolled only ever placed/accepted. Our hand inlaid leather Championship cube is a testament to our craft, while the Contemporary inlaid leather & nickel edition has become a firm favourite. Our deep etched acrylic cube is a stalwart & for play on the move the travel size is ideal.



B-CBE/Champ/51



B-CBE/CS/51



O-CBE/30

Ref #	Each	Size	USD \$	GB £	Euro €
B-CBE/Champ/51	Competition size	51mm/2" Inlaid leather	\$369	£230	€ 276
B-CBE/CS/51	Competition size	51mm/2" Inlaid leather/chrome, custom colours	\$112	£70	€ 84
B-CBE/CS/51-RB	Competition size	51mm/2" Inlaid leather/chrome, alternate Cherry (red) and Ebony (black)	\$80	£49.95	€ 60
B-CBE/CS/445	Competition size	44.5mm/1.75" Inlaid leather/chrome, custom colours	\$109	£68	€ 81
B-CBE/Champ/30	Challenge size	30mm/1.18" Inlaid leather	\$360	£225	€ 270
O-CBE/30*	Challenge size	30mm/1.18" deep etched acrylic	\$13.92	£8.70	€ 10.44
O-CBE/16*	Travel size	16mm/0.63" printed acrylic	\$4.32	£2.70	€ 3.24

Tel + 44 (0) 1799 599 100 Fax + 44 (0) 1799 599 733 E-mail: bespoke@geoffreyparker.com Web: www.geoffreyparker.com

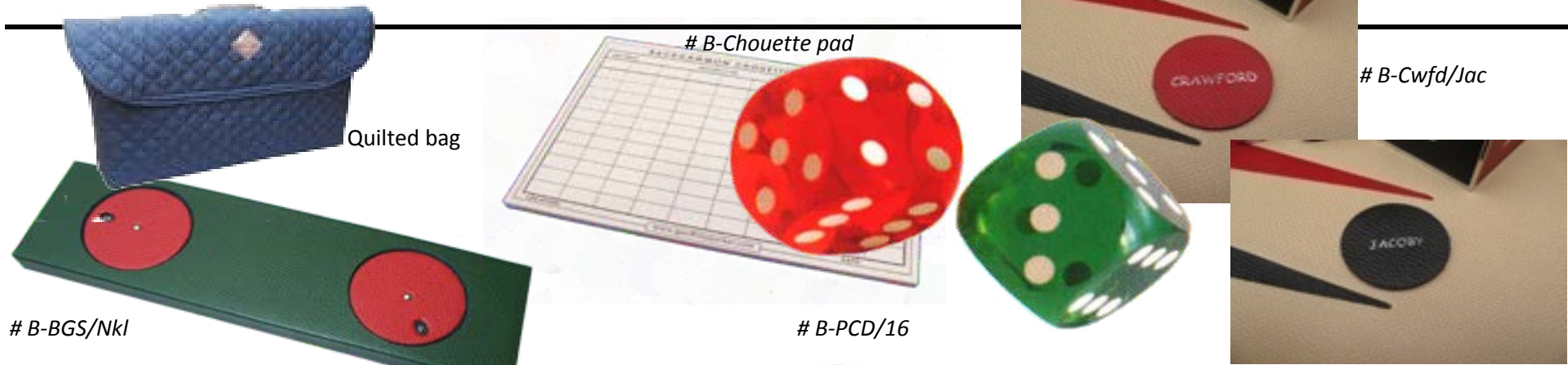
Piglets Corner - Upper Green - Wimbish Village - Saffron Walden - Essex CB10 2XJ, England

Geoffrey Parker Games Ltd

The World's finest board games, hand made in our English workshops

BACKGAMMON - Accessories & dice

Essentially for the professional player: A unique dual dialed leather-bound scorer (up to 21 points), Chouette pads & kits for Chouette play. Precision ball cornered dice (a MUST for any serious player) available in opaque & translucent finishes, standard dice & reversible leather "Crawford" & "Jacoby" rule disc for regular Backgammon or Chouette use.



Ref #	Each	Size	USD \$	GB £	Euro €
B-BGS/Nkl	Backgammon Scorer	220 x 63 x 15 mm (8.66" x 2.48" x 0.6")	\$319	£199	€ 239
B-Cwfd/Jac	Crawford/Jacoby	37 dia x 2.5 mm (1.45" dia x 0.1")	\$16.18	£10.11	€ 12.13
B-Chouette/pad	25 sheet pad	210 x 148 x 5 mm (8.25" x 5.8" x 0.2")	\$9.58	£6	€ 7.19
B-Chouette-Kit	Pad, cubes, pencils	As above plus 4 x coloured 30 mm (1.18") doubling cubes/4 slim pencils & pad	\$94.08	£59	€ 70.56
B-PCD/16*	Precision dice	16mm/0.63" Translucent: red, green, blue, amber, red; Opaque: black, white	\$13.92	£8.70	€ 10.44
B-SD/16*	Standard dice	16mm/0.63" White	\$1.02	£0.64	€ 0.76
B-SD/14*	Standard dice	14mm/0.55" White	\$0.84	£0.53	€ 0.63
B-SD/12*	Standard dice	12mm/0.47" White	\$0.69	£0.43	€ 0.52
B-QLT-89/87 **	Quilted bag	Special padded quilted bag for extra protection of your board, Velcro fastening	\$173.49	£108	€ 130.12

Tel + 44 (0) 1799 599 100 Fax + 44 (0) 1799 599 733 E-mail: bespoke@geoffreyparker.com Web: www.geoffreyparker.com

Piglets Corner - Upper Green - Wimbish Village - Saffron Walden - Essex CB10 2XJ, England

Geoffrey Parker Games Ltd

The World's finest board games, hand made in our English workshops

BACKGAMMON *table-top plinths*

A beautiful table-top Backgammon top on a scalloped sided plinth - allowing stowage of all accessories beneath the inlaid leather playing board, felt lined. Plinth size is 635 x 635 x 102 mm (25" x 25" x 4"). Stone size is 38mm (1.5" dia)



B-86/SSP-Champ



B-86/SSP-Prest

Ref #	Item description	USD \$	GB £	Euro €
B-86/SSP-Champ	Dauphin leather plinth/playing board with weighted full leather Backgammon stones	\$3,263	£2,040	€ 2,448
B-86CS/SSP	Dauphin leather plinth/playing board with Contemporary inlaid leather/nickel Backgammon stones	\$3,528	£2,205	€ 2,646
B-86/SSP-Prest	Dauphin leather plinth/playing board with acrylic Backgammon stones	\$2,441	£1,525	€ 1,830
B-86/5225-Club	Dauphin leather plinth with Billiard cloth & inlaid leather playing field with acrylic Backgammon stones	\$2,441	£1,525	€ 1,830
E-86CS/SSP-WS	Water Snake set with nickel/WS Backgammon stones acrylic cube, felt lined	\$4,216	£2,635	€ 3,162

Tel + 44 (0) 1799 599 100 Fax + 44 (0) 1799 599 733 E-mail: bespoke@geoffreyparker.com Web: www.geoffreyparker.com

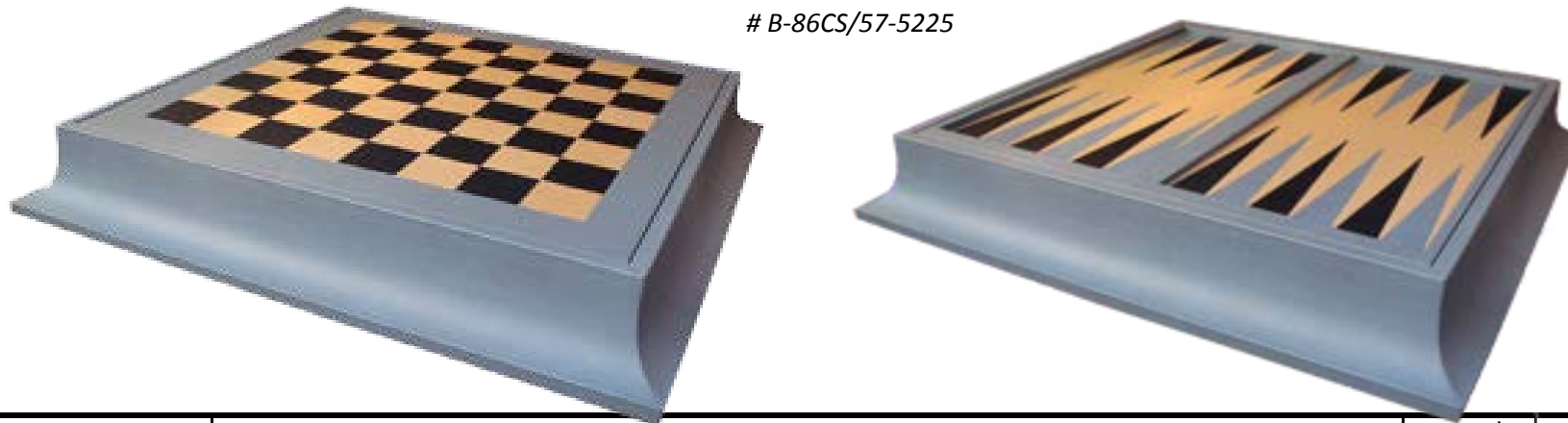
Piglets Corner - Upper Green - Wimbish Village - Saffron Walden - Essex CB10 2XJ, England

Geoffrey Parker Games Ltd

The World's finest board games, hand made in our English workshops

BACKGAMMON & CHESS *plinths*

The twinning of two of the most traditional of games within one beautifully hand bound leather scalloped-sided plinth is an obvious one - to make such a stunning piece though, takes great skill and this is shown to high degree by Geoffrey Parker's craftsmen and women. From a starter set to the fabled *Spassky & Fisher* set, a contemporary version & into more exotic versions using rare skins. Plinth size is 635 x 635 x 102 mm (25" x 25" x 4")



Ref #	Item description	USD \$	GB £	Euro €
B-86/57-5225-Champ	Leather Backgammon stones & "Championship" 4" Staunton Boxwood & Ebony chess set, suede lined	\$5,031	£3,145	€ 3,774
B-86-S&F/5225	Acrylic Backgammon stones & "Spassky & Fischer" 3.5" Staunton Boxwood & Ebony chess, felt lined	\$4,884	£3,052	€ 3,663
B-86CS/57-5225	Contemporary nickel/leather Backgammon stones & "Club" Staunton style boxwood chess set, felt lined	\$4,128	£2,580	€ 3,096
B-86CS/56-5226	Contemporary nickel/leather Backgammon stones & Chrome/leather Silver Jubilee chess set, felt lined	\$6,864	£4,290	€ 5,148
B-86/57-5225-Prest	Acrylic Backgammon stones & "Club" Staunton style boxwood chess set, felt lined	\$3,088	£1,930	€ 2,316
E-86CS/57-5225/WS	Water Snake set with nickel/WS Backgammon stones & Club Staunton Boxwood Chess pieces, felt lined	\$3,792	£2,370	€ 2,844

Tel + 44 (0) 1799 599 100 Fax + 44 (0) 1799 599 733 E-mail: bespoke@geoffreyparker.com Web: www.geoffreyparker.com

Piglets Corner - Upper Green - Wimbish Village - Saffron Walden - Essex CB10 2XJ, England

Geoffrey Parker Games Ltd

The World's finest board games, hand made in our English workshops

Bespoke - BACKGAMMON & CHESS attachés

Two traditional favourites in one smart attaché case. A superb *Challenge* size Backgammon case has an inlaid leather chessboard set into the lid. Inside the Backgammon are two felt drawstring bags to stow the chess pieces. Available with either hand made weight leather stones (Championship edition), nickel and leather (Contemporary edition) and acrylic stones (Prestige edition). Size: 38mm/1.5" dia, stones, case closed: 517 x 335 x 85 mm (20.3" x 13.25" x 3.25")



B-86/57-Prest

Ref #	Item description	USD \$	GB £	Euro €
B-86/57CS	Challenge Backgammon attache with inlaid leather chessboard as lid, nickel/leather Backgammon stones/checkers, acrylic d/cube, standard dice, "Club" Stautnon design chess set	\$5,031	£3,145	€ 3,774
B-86/57-Champ	As above but with weighted leather stones/checkers & leather d/cube, precision dice	\$6,800	£4,250	€ 5,100
B-86/57-Prest	As above but with acrylic Backgammon stones/chckers, cube and standard dice	\$3,944	£2,465	€ 2,958

Tel + 44 (0) 1799 599 100 Fax + 44 (0) 1799 599 733 E-mail: bespoke@geoffreyparker.com Web: www.geoffreyparker.com
Piglets Corner - Upper Green - Wimbish Village - Saffron Walden - Essex CB10 2XJ, England

Geoffrey Parker Games Ltd

The World's finest board games, hand made in our English workshops

STAUNTON CHESS *plinths*

A range of skillfully hand bound leather scalloped-sided plinths for our collection of traditional Staunton design chess sets in Dauphin leather & exotic skins. Playing pieces are stowed beneath the chessboard which pivots up to gain access. Plinth size is 635 x 635 x 102 mm (25" x 25" x 4")



E-57-5225/SSP-Club-WS



B-57-5225/SSP-Club



B-57-5225/SSP-Club-Bling

Ref #	Item description	USD \$	GB £	Euro €
B-57-5225/SSP-Champ	"Championship" 4" Staunton Boxwood & Ebony (or Rosewood) chess set, suede lined	\$3,143	£1,965	€ 2,358
B-57-5225/SSP-Champ/WS	As above but bound in Water Snake	\$3,328	£2,080	€ 2,496
B-57-5225/SSP-S&F	"Spassky & Fischer" 3.5" chess set in Boxwood & Ebony with gold embossed bases	\$4,272	£2,670	€ 3,204
B-57-5225/SSP-S&F/WS	As above but bound in Water Snake	\$4,544	£2,840	€ 3,408
B-57-5225/SSP-Club	"Club" 3.75" Boxwood Staunton chess set in scallop-sided plinth, felt lined	\$2,295	£1,435	€ 1,722
B-57-5225/SSP-Club-Bling	"Club" 3.75" Boxwood Staunton chess set in scallop-sided plinth inlaid with Swarovski crystals, felt lined	\$3,752	£2,345	€ 2,814
E-57-5225/SSP-Club-WS	As # B-5225/SSP-Club above but bound in exotic Water Snake	\$2,425	£1,515	€ 1,818
B-57-225-BH-Club	"Club" 3.75" Boxwood Staunton chess set in traditional BRIDLE HIDE scalloped sided plinth, felt lined	\$2,376	£1,485	€ 1,782

Tel + 44 (0) 1799 599 100 Fax + 44 (0) 1799 599 733 E-mail: bespoke@geoffreyparker.com Web: www.geoffreyparker.com

Piglets Corner - Upper Green - Wimbish Village - Saffron Walden - Essex CB10 2XJ, England

Geoffrey Parker Games Ltd

The World's finest board games, hand made in our English workshops

STAUNTON CHESS book-boxes

A long standing *Geoffrey Parker* design going back to the sixties. A pair hand-bound leather book-boxes are made with either gold or silver embossing to the spines. Lined in sumptuous padded suede to protect one's precious chess pieces. Matching chessboard are available (see "chessboard" tab).



B-578/S&F

B-578/Club

Ref #	Item description	USD \$	GB £	Euro €
B-578/Club	"Club" Staunton design chess set in sueded lined pair of book-boxes	\$3,839	£2,399	€ 2,879
B-578/S&F	As above but with "Spassky & Fischer" chess set with special edition embossings to chess bases	\$5,680	£3,550	€ 4,260

Tel + 44 (0) 1799 599 100 Fax + 44 (0) 1799 599 733 E-mail: bespoke@geoffreyparker.com Web: www.geoffreyparker.com

Piglets Corner - Upper Green - Wimbish Village - Saffron Walden - Essex CB10 2XJ, England

Geoffrey Parker Games Ltd

The World's finest board games, hand made in our English workshops

Full size TRAVEL CHESS attaches

For the professional chess player on the move - two designs both incorporating an inlaid leather chessboard (one folding, one not) whilst offering safe storage of your precious chessmen while travelling.



B-57AT/Club



B-57-IC/Club



Ref #	Item description	USD \$	GB £	Euro €
B-57AT/S&F	"Spassky & Fischer" Staunton design chess set in suede lined inlaid leather chessboard attache case	\$6,688	£4,180	€ 5,016
B-57AT/Club	"Club" Staunton design chess set in felt lined inlaid leather chessboard attache case	\$4,824	£3,015	€ 3,618
B-56AT/Club	Silver Jubilee Chrome & leather chess set in inlaid leather chessboard atatche case	\$7,487	£4,680	€ 5,615
B-57-IC/Club	Folding inlaid leather chessboard attache case with "Club" Staunton design chess set, felt lined	\$3,495	£2,185	€ 2,622
B-57-IC/S&F	Folding inlaid leather chessboard attache case with "Spassy & Fischer" Staunton chess set, suede lined	\$5,489	£3,430	€ 4,116
B-56-IC/Club	Folding inlaid leather chessboard attache case with "Silver Jubilee" Chrome/leather chess set, felt lined	\$5,905	£3,690	€ 4,429

Tel + 44 (0) 1799 599 100 Fax + 44 (0) 1799 599 733 E-mail: bespoke@geoffreyparker.com Web: www.geoffreyparker.com
Piglets Corner - Upper Green - Wimbish Village - Saffron Walden - Essex CB10 2XJ, England

Geoffrey Parker Games Ltd

The World's finest board games, hand made in our English workshops

SILVER JUBILEE CHESS

Our award winning Silver Jubilee Chess set makes a splendid centre piece to any contemporary setting. Originally created in the 1960s in stunning Sterling silver-gilt when it went on to win the Design Centre award in HM The Queen's Silver Jubilee year when 2 sets were made with the special hall-mark created for this Royal celebration, recently we have re-introduced this stunning design but in polished chrome and inlaid in Dauphin leather - these iconic pieces have stood the test of time. Available either loose, or in a pair of "book-boxes" (as the originals were) or in one of our sumptuous scalloped-side plinths.



E-56WS-SSP/Bling



B-56-SSP/Club

E-56SG/58

Ref #	Item description	USD \$	GB £	Euro €
B-56-SSP/Club	Chrome & leather Silver Jubilee chess set in scalloped-sided plinth, 635 x 635 x 102 mm (25" x 25" x 4")	\$5,496	£3,435	€ 4,122
E-56WS-SSP/Club	As above but plinth and chessmen inlays in exotic Water Snake	\$5,024	£3,140	€ 3,768
E-56WS-SSP/Bling	As above but with Swarovski crystal trim to the base of each chesspiece and to the plinth	\$6,879	£4,300	€ 5,159
B-56/5C	Silver Jubilee Chrome & leather chess set in leather cabinet, felt lined, (chessboard extra)	\$4,975	£3,109	€ 3,731
B-56AT/Club	Silver Jubilee Chrome & leather chess set in inlaid leather chessboard attaché case	\$7,487	£4,680	€ 5,615
B-56CH	Set of loose Chrome/leather Silver Jubilee chessmen	\$3,487	£2,180	€ 2,616
E-56SG/58	Sterling silver-gilt Silver Jubilee Chess set in 2 leather book-boxes & matching silver trimmed chessboard	\$78,288	£48,930	€ 58,716
<i>Please note:</i>	<i>Price of # E-56SG/78 is only a guide & will need to be confirmed at time of order due to bullion fluctuations</i>			

Tel + 44 (0) 1799 599 100 Fax + 44 (0) 1799 599 733 E-mail: bespoke@geoffreyparker.com Web: www.geoffreyparker.com

Piglets Corner - Upper Green - Wimbish Village - Saffron Walden - Essex CB10 2XJ, England

Geoffrey Parker Games Ltd

The World's finest board games, hand made in our English workshops

CHESS - Cabinets & chessboards

A simple but elegant leather-bound chess cabinet which when coupled with an inlaid leather chessboard and a matching chess clock, makes for a lovely gift. Alternatively for those requiring a luxury presentation but without the cost of a separate cabinet and chessboard, our *Off the Bench* printed leather chessboard tray is also a popular choice.



B-57-535/Club



O-CH57



B-5225/ST

Ref #	Item description	USD \$	GB £	Euro €
B-57-535/Club	"Club" Staunton design chess set in felt lined leather cabinet (chessboard extra)	\$1,720	£1,075	€ 1,290
B-56/5C	Silver Jubilee Chrome & leather chess set in leather cabinet, felt lined, (chessboard extra)	\$4,975	£3,109	€ 3,731
B-5225/ST	Inlaid leather SINGLE THICKNESS CHESSBOARD with non-slip suedette underside, 2.25" (57 mm) chequers	\$943	£590	€ 708
B-5225/DT	Inlaid leather DOUBLE THICKNESS CHESSBOARD, contrasting centre edge strip, suedette under, 2.25" (57 mm) ch	\$1,248	£780	€ 936
E-5225/SS	Inlaid leather Chessboard with chrome trim to edge with leather inlay	At	Design	Stage
O-CH57	Printed leather Chessboard on felt lined leather tray with "Club" Boxwood Staunton chess set	\$1,440	£900	€ 1,080
O-CH57-PB	Printed leather Chessboard with a "Club" Boxwood Staunton chess set in presentation box	\$1,176	£735	€ 882

Tel + 44 (0) 1799 599 100 Fax + 44 (0) 1799 599 733 E-mail: bespoke@geoffreparker.com Web: www.geoffreparker.com

Piglets Corner - Upper Green - Wimbish Village - Saffron Walden - Essex CB10 2XJ, England

Geoffrey Parker Games Ltd

The World's finest board games, hand made in our English workshops

STAUNTON CHESS SETS & accessories

There is no better playing set than the fabled Staunton design, originated by Howard Staunton in 1849 and up-dated in 1861. Designed by a champion it has become de-riguer for all championship play since then. To complete our Chess Accessories - a chess clock is given the "Geoffrey Parker" treatment and can be made to match any of our chess sets.



57-CH/440



57-Club/375



B-57CLK

Ref #	Item description	USD \$	GB £	Euro €
57-Club/250 *	"Club" Staunton design chess with extra Queens, triple weighted, boxwood (2.5" King) - 37mm cheq.size	\$262	£164	€ 197
57-Club/375 *	"Club" Staunton design chess with extra Queens, triple weighted, boxwood (3.75" King) - 57mm cheq.size	\$319	£199	€ 239
57-CH/310 *	"Championship" Ebony & Boxwood or Rosewood & Boxwood, 3.1" King Staunton set - 51mm cheq.size	\$728	£455	€ 546
57-CH/400 *	"Championship" Ebony & Boxwood or Rosewood & Boxwood, 4" King Staunton set - 60mm cheq.size	\$1,304	£815	€ 978
57-CH/440 *	"Championship" Ebony & Boxwood or Rosewood & Boxwood, 4.4" King Staunton set - 63 cheq.size	\$1,448	£905	€ 1,086
57-S&F/350 *	Facsimile of the 1972 Spassky & Fisher set in solid Ebony & Boxwood (3.5" King) by Jacques - 54mm cheq.	\$0	£0	€ 0
B-57CLK	Leather-bound Chess clock	\$516	£323	€ 387

NB All "CH" chessmen has option of leather,suede or black felt bases, "S&F" are leather, "Club" are black felt

Tel + 44 (0) 1799 599 100 Fax + 44 (0) 1799 599 733 E-mail: bespoke@geoffreyparker.com Web: www.geoffreyparker.com

Piglets Corner - Upper Green - Wimbish Village - Saffron Walden - Essex CB10 2XJ, England

Geoffrey Parker Games Ltd

The World's finest board games, hand made in our English workshops

STAUNTON CHESS SETS & accessories

Following the great success of our first themed chess set edition (Peter Rabbit) with the younger generation; encouraging them to learn and enthuse about the great game of Chess; this has inspired us to seek historic and fictional fun chess sets which will be developed with stunning artistic representation through our stunning hand-bound leather plinths and chessboards in full colour.



Sherlock
Holmes

Peter Rabbit



Ref #	Item description	USD \$	GB £	Euro €
O-CH-PR	Themed printed leather scalloped sided plinth with PETER RABBIT chess set (crushed marbel & resin)	\$2,816	£1,760	€ 2,112
O-CH-LoR	Themed printed leather scalloped sided plinth with LORD OF THE RINGS chess set (crushed marbel & resin)	At	Design	Stage
O-CH-PR	Themed printed leather scalloped sided plinth with ROBIN HOOD chess set (crushed marbel & resin)	At	Design	Stage
O-CH-PR	Themed printed leather scalloped sided plinth with SHERLOCK HOLMES chess set (crushed marbel & resin)	At	Design	Stage
O-CH-PR	Themed printed leather scalloped sided plinth with ALICE IN WONDERLAND chess set (crushed marbel & resin)	At	£1,760	Stage

NB All chessmen have embossed leather bases & are stowed within protective felt recesses.

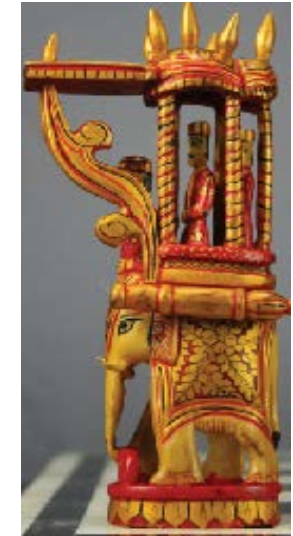
Tel + 44 (0) 1799 599 100 Fax + 44 (0) 1799 599 733 E-mail: bespoke@geoffreyparker.com Web: www.geoffreyparker.com
Piglets Corner - Upper Green - Wimbish Village - Saffron Walden - Essex CB10 2XJ, England

Geoffrey Parker Games Ltd

The World's finest board games, hand made in our English workshops

EXOTIC CHESS SETS

Here is a sneak preview of some of the new Chess sets we will be making exotic settings for.....watch this space!



Ref #	Item description	USD \$	GB £	Euro €
		At	Design	Stage
		At	Design	Stage
		At	Design	Stage
		At	Design	Stage
		At	Design	Stage
		At	Design	Stage
		At	Design	Stage
		At	Design	Stage

NB All "CH" chessmen has option of leather,suede or black felt bases, "S&F" are leather, "Club" are black felt

Tel + 44 (0) 1799 599 100 Fax + 44 (0) 1799 599 733 E-mail: bespoke@geoffreyparker.com Web: www.geoffreyparker.com

Piglets Corner - Upper Green - Wimbish Village - Saffron Walden - Essex CB10 2XJ, England

Geoffrey Parker Games Ltd

The World's finest board games, hand made in our English workshops

BRIDGE & PLAYING CARD SETS

An old Geoffrey Parker classic; Bridge in a "book". Available in 2 sizes, 2 and 4 decks (the larger version is also available as a Whist and Rummy set with nickel and leather Trump markers for Whist & Rummy). A simple 2 deck Bridge set in a case is a popular choice but for those wanting the ultimate in extravagance we offer either gold or silver plated twin deck of playing cards in either a Dauphin calf, Water Snake or exotic Alligator cased editions.



Ref #	Item description	USD \$	GB £	Euro €
B-43BB	Classic two deck Bridge set in leather book-box, suede or leather lined	\$1,135	£710	€ 852
B-24BB	Four deck Bridge, Whist & Rummy set in leather book-box, suede or leather lined with leather/nickel Trump mark	\$1,672	£1,045	€ 1,254
B-23C	Four deck Bridge set in leather case	\$1,391	£870	€ 1,043
B-336/R	Leather-bound two deck Bridge case with magnetic closure, 4 pencils, score cards & satin card lifts	\$633	£395	€ 474
B-336/R-Auto	As above Bridge set but bound in Automotive hide	\$680	£425	€ 510
E-336/CL-WS	As above but bound in exotic Water Snake	\$728	£455	€ 546
B-337/Dphn/G-S/C	Two decks of Gold or Silver plated cards (Bridge size) in Dauphin case	\$798	£499	€ 599
E-337/CL-WS/G-S/C	Two decks of Gold or Silver plated cards (Bridge size) in Water Snake case	\$1,080	£675	€ 810
E-337/CL-Alig/G-S/C	Two decks of Gold or Silver plated cards (Bridge size) in Alligator case, suede lined	\$2,768	£1,730	€ 2,076
E-BRG/G-S/C	Single deck of either Gold or Silver plated cards (Bridge size)	\$40	£25	€ 30

Tel + 44 (0) 1799 599 100 Fax + 44 (0) 1799 599 733 E-mail: bespoke@geoffreyparker.com Web: www.geoffreyparker.com

Piglets Corner - Upper Green - Wimbish Village - Saffron Walden - Essex CB10 2XJ, England

Geoffrey Parker Games Ltd

The World's finest board games, hand made in our English workshops

BRIDGE & ACCESSORIES

To compliment our range of Bridge sets are our custom printed double-sided score cards in packs of 50s, slim Bridgle pencils and plastic coated finest quality Bridge playing cards.



Ref #	Item description	USD \$	GB £	Euro €
BRG-21 *	Double sided Bridge score cards, per pack of 50	\$8	£4.95	€ 6
BRG-PEN/4 *	Set of 4 slim Bridge pencils (black) with erasers	\$5	£2.95	€ 4
BRG-SEN *	Twin deck of Bridge playing cards, plastic coated	\$16	£9.95	€ 12
BRG-TM-CH/4	Inlaid leather & chrome TRUMP MARKERS (4 suits per set)	\$158	£99.00	€ 119

Tel + 44 (0) 1799 599 100 Fax + 44 (0) 1799 599 733 E-mail: bespoke@geoffreyparker.com Web: www.geoffreyparker.com
Piglets Corner - Upper Green - Wimbish Village - Saffron Walden - Essex CB10 2XJ, England

Geoffrey Parker Games Ltd

The World's finest board games, hand made in our English workshops

Bespoke -DOMINOES

A pub favourite gets the Geoffrey Parker treatment - a standard size acrylic double-six domino set with spinners is presented in a leather-bound box with a leather Cribbage board as the lid - available with either acrylic or Sterling silver and gilt Crib pegs. For great fun at home, a magnificent giant inlaid leather carpet domino set lined lavishly in suede within a leather-bound and inlaid "domino" case is available in all Dauphin colours including exotics and even with customised "spots" (as for more details).

B-66CDL



B-657/SG



Ref #	Item description		GBP	Euro €
B-657	Leather-bound Domino & Cribbage box with acrylic double 6 dominoes & pegs (203 x 72 x 75mm)	\$713	£445	€ 535
B-657/SG	As above but with 2 x Silver and 2 x Silver-gilt Crib pegs	\$824	£515	€ 618
B-657/CH	Inlaid leather & chrome trimmed Dominoes, Cribbage and card case	At	design	stage
B-Crib	Leather-bound Crib board with acrylic pegs	\$223	£140	€ 168
B-Crib/SG	Leather-bound Crib board with 2 x Silver & 2 x Silver-gilt Crib pegs	\$334	£209	€ 251
B-66CDL	Inlaid leather giant Carpet Dominoes in "Domino" case, nickel lift catches, suede lined (384 x 180 x 160 mm)	\$3,880	£2,425	€ 2,910

Tel + 44 (0) 1799 599 100 Fax + 44 (0) 1799 599 733 E-mail: bespoke@geoffreyparker.com Web: www.geoffreyparker.com

Piglets Corner - Upper Green - Wimbish Village - Saffron Walden - Essex CB10 2XJ, England

Geoffrey Parker Games Ltd

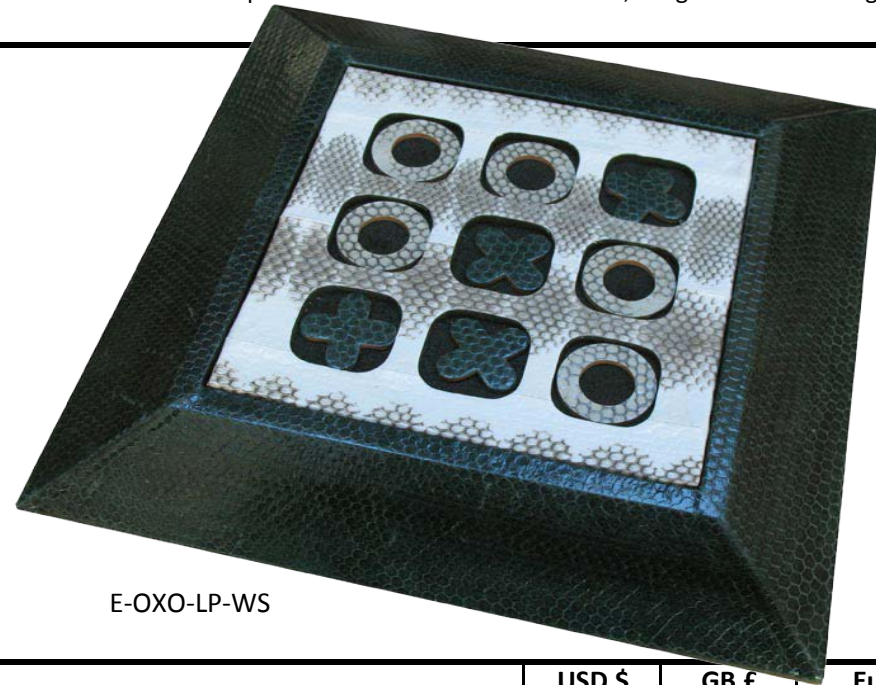
The World's finest board games, hand made in our English workshops

EXECUTIVE TIC TAC TOE

A great executive gift for the desk, a leather-bound Tic Tac Toe plinth, available in numerous colours in either Dauphin leather or exotic Water Snake, Shagreen or even Alligator. Solid leather playing pieces complete this attractive piece.



B-OXO-LP



E-OXO-LP-WS

Ref #	Item description	USD \$	GB £	Euro €
B-OXO-LP	Dauphin leather TIC TACT TOE plinth with leather playing pieces	\$360	£225	€ 270
E-OXO-LP-WS	As above but bound in exotic WATER SNAKE	\$441	£275	€ 330
B-OXO/Auto or CF	As above but bound in either perforated AUTOMOTIVE hide or CARBON FIBRE leather	\$368	£230	€ 276
E-OXO-Allig	As above but in exotic ALLIGATOR	\$1,353	£845	€ 1,015
E-OXO-SGN	As above but in exotic SHAGREEN (Stingray)	\$839	£525	€ 629

Tel + 44 (0) 1799 599 100 Fax + 44 (0) 1799 599 733 E-mail: bespoke@geoffreyparker.com Web: www.geoffreyparker.com

Piglets Corner - Upper Green - Wimbish Village - Saffron Walden - Essex CB10 2XJ, England

Geoffrey Parker Games Ltd

The World's finest board games, hand made in our English workshops

PERUDO®

Proving a the game of choice for the super-yacht set, Perudo® is presented in 6 uncrushable leather-bound cups, suede lined and with a leather "stopper". Thirty dice are supplied as well as a suede drawstring bag. All Dauphin colours are available or these can be bound in Automotive or Carbon fibre leathers (other exotics by request can be made). Yacht logos and initials can be easily applied.

B-PRD/6



Personalised,
corporate &
yacht logo

Ref #	Item description	USD \$	GB £	Euro €
B-PRD/6	Set of 6 eather-bound PERUDO cups, suede lined to deaden noise, complete with stopper with nickel knob	\$1,264	£790	€ 948
E-PRD/6-Auto or CF	As above but bound in AUTOMOTIVE HIDE or CARBON FIBRE leather	\$1,272	£795	€ 954

Tel + 44 (0) 1799 599 100 Fax + 44 (0) 1799 599 733 E-mail: bespoke@geoffreyparker.com Web: www.geoffreyparker.com

Piglets Corner - Upper Green - Wimbish Village - Saffron Walden - Essex CB10 2XJ, England

Geoffrey Parker Games Ltd

The World's finest board games, hand made in our English workshops

ORIENTAL GAMES

The oriental game of Mah Jong with charming hand painted bone and bamboo tiles given a luxury casing, lined in sumptuous suede. Soon to join this is a new contemporary Mah Jong desing in chrome and leather and a new take on Chinese checkers.



Ref #	Item description	USD \$	GB £	Euro €
B-64MJ	leather-bound attache case with Bone/Bamboo hand painted MAH JONG set	\$2,177	£1,360	€ 1,633
B-64MJ/CH	As above but with inlaid leather & chrome Mah Jong tiles	At design	stage	
B-62CHCK-CH	Leather, chrome CHINESE CHECKERS	At design	stage	

Tel + 44 (0) 1799 599 100 Fax + 44 (0) 1799 599 733 E-mail: bespoke@geoffreyparker.com Web: www.geoffreyparker.com

Piglets Corner - Upper Green - Wimbish Village - Saffron Walden - Essex CB10 2XJ, England

Geoffrey Parker Games Ltd

The World's finest board games, hand made in our English workshops

Bespoke - ROULETTE

Leather-bound, suede lined Roulette drum with Stainless-Steel trim to the lid. Base section houses 600 x 11.5gm Poker chips (printed one side), a Roulette marker, 2 Roulette balls and a 36cm Mahogany Roulette wheel. The lid is lined in matching suede and houses a Roulette cloth layout and a Croupier's rake. The drum is trimmed to the underside in non-slip Suedette. Size: 24.5" dia or 620 mm.



Ref #	Item description	USD \$	GB £	Euro €
B-97Nkl	Leather-bound Roulette drum, suede lined, complete with 600 chips, layout cloth, marker & balls	\$5,944	£3,715	€ 4,458
B-97Nkl-Auto	As above but bound in perforated AUTOMOTIVE HIDE	\$6,251	£3,907	€ 4,688
B97/36	36cm (14.2") diameter Mahogany Roulette wheel, nickel centre, spindle	\$603	£377	€ 452
B-97/45	45cm (17.7") diameter Mahongay Roulette wheel, nnickel centre, 1 bearing	\$907	£567	€ 680
B-97/50	50cm (19.7") diameter Mahongay Roulette wheel, nnickel centre, 2 bearings	\$1,071	£670	€ 804
B-97/Layout	French Roulette cloth 75 x 120 cm	\$195	£122	€ 146
B-97/Rake	60 cm (23.6") brass Croupier's rake (can be broken down into 3 parts)	\$93	£58	€ 70
B-95/RC10-Clay/25 *	10gm Professional 100% Clay chips, rolls of 25, white, red, blue, green, black	\$4.80	£3.00	€ 3.60

Tel + 44 (0) 1799 599 100 Fax + 44 (0) 1799 599 733 E-mail: bespoke@geoffreyparker.com Web: www.geoffreyparker.com

Piglets Corner - Upper Green - Wimbish Village - Saffron Walden - Essex CB10 2XJ, England

Geoffrey Parker Games Ltd

The World's finest board games, hand made in our English workshops

Exceptional Pieces: ICONIC FACADES

Created to celebrate HM The Queen's Diamond Jubilee, this facsimile of Buckingham Palace stands over 2 metre/7ft long and houses a full Roulette within the roof which has reversible Roulette layouts and Union Jack flag printed in leather. The centre roof section which has a Sterling silver flag pole with a Diamond set into the top and flying The Royal Standard, conceals a Mahogany Roulette wheel. Four leather-bound trays of chips are neatly stowed also within the roof. As if this was not enough, the front of the Palace hides 3 drawers that open to reveal British hand cut crystal decanters and stemware. A limited edition to this specification will be made of 25 pieces. This is the first in a series of "iconic facade" buildings.



Ref #	Attache cases	Size	USD \$	GB £	Euro €
E-IC-BP (+s)	Buckingham Palace	Party at the Palace with Roulette & drinkies	\$40,000	£25,000	€ 30,000

Tel + 44 (0) 1799 599 100 Fax + 44 (0) 1799 599 733 E-mail: bespoke@geoffreyparker.com Web: www.geoffreyparker.com

Piglets Corner - Upper Green - Wimbish Village - Saffron Walden - Essex CB10 2XJ, England

Geoffrey Parker Games Ltd

The World's finest board games, hand made in our English workshops

POKER CHIP CASES & ACCESSORIES

A growing range as Geoffrey Parker brings a touch of luxury to this sometimes "backroom" game. Poker chips cases & accessories bound by hand in Dauphin leather or in exotic Water Snake (see under "Game Tables" for Poker tables).



B-95/600-CH



Ref #	Item description	USD \$	GB £	Euro €
B-95/600	Leather Poker chip case, suede lined, 600 chips, 4 decks Poker cards, nickel/leather Dealer & Blind buttons	\$2,872	£1,795	€ 2,154
B-95/600-Auto	As above but bound in Super car automotive hide	\$2,905	£1,815	€ 2,178
B-95/600-WS	As above but bound in exoitic Water Snake	\$3,250	£2,031	€ 2,438
B-95DB/Nkl	Inlaid leather/chrome & silver embossed Dealer Button	\$71	£45	€ 53
B-95BB-L/3	Three double sided silver embossed leather poker "blind" discs in alternate cols (Little, Big & Missed)	\$156	£97	€ 117
B-95/PC115/25 *	11.5gm Poker chips, rolls of 25, numbered one side: # 1 white, # 5 blue, # 10 red, # 25 green, # 100 black	\$4.00	£2.50	€ 3.00
B-95/PC10-Clay/25 *	10gm Prof. Clay chips, rolls of 25, numbered: # 25 white, # 100 red, # 500 blue, # 1000 green, # 5000 black	\$4.80	£3.00	€ 3.60
B-95/PKC-PC *	Poker size Casino quality "Bee" large indicy playing card TWIN decks, plastic coated, (red & blue)	\$9.60	£6.00	€ 7.20
B-95/PKC/100 *	Poker size Casino quality "Kem Arrow" large indicy playing card TWIN decks, 100% plastic, (red & blue)	\$79.92	£49.95	€ 59.94

Tel + 44 (0) 1799 599 100 Fax + 44 (0) 1799 599 733 E-mail: bespoke@geoffreyparker.com Web: www.geoffreyparker.com

Piglets Corner - Upper Green - Wimbish Village - Saffron Walden - Essex CB10 2XJ, England

Geoffrey Parker Games Ltd

The World's finest board games, hand made in our English workshops

EXCEPTIONAL POKER

Soon to come..... the ultimate in Poker - the World's most opulent Poker case ever made, filled with Diamonds, Emeralds, Rubies, Sapphires & Black Diamonds set into 384 white 18ct Gold chips trimmed in Shagreen & encased in a suede lined Alligator case with 4 Platinum plated playing cards of course! If this isn't quite within your budget we have prepared some alternatives. Please note: sets with precious stones & metals will be subject to re-quotation at the time of ordering depending on fluctuations in the bullion & stone markets.



Ref #	Item description	USD \$	GB £	Euro €
E-95/384-Allig/18ct *	The ultimate Poker set as described above with full size stones	\$6,971,032	£4,356,895	€ 5,228,274
E-95/384-Allig/9ct *	As above but in 9ct white gold and with smaller stones	\$2,705,904	£1,691,190	€ 2,029,428
E-95/384-Allig/SG *	As above but chips made in Sterling silver-gilt & smaller stones	\$1,615,624	£1,009,765	€ 1,211,718
E-95/384-Allig/SS *	As # B-95/384-Allig/SG but with Sterling silver chips & smaller stones	\$1,605,600	£1,003,500	€ 1,204,200
E-95/384-Allig-bling *	Nickel/Shagreen chips set with Swarovski crystals in a Alligator case & Platitnum cards	\$45,943	£28,715	€ 34,457
E-95/384-WS-bling	Nickel/Shagreen chips set with Swarovski crystals in a Water Snake case & Platitnum cards	\$22,112	£13,820	€ 16,584
B-95/384	Nickel/Dauphin chips set in a Dauphin bound case, standard Poker cards & nickel/leather Dealer button	\$17,052	£10,658	€ 12,789
B-95/CH	Single chrome and leather inlaid POKER CHIP (any value of your choice)	\$38	£24	€ 29

Please note: Items containing precisiuous metals: prices will have to be confirmed at time of ordering due to fluctuations in the markets

Tel + 44 (0) 1799 599 100 Fax + 44 (0) 1799 599 733 E-mail: bespoke@geoffreyparker.com Web: www.geoffreyparker.com

Piglets Corner - Upper Green - Wimbish Village - Saffron Walden - Essex CB10 2XJ, England

Geoffrey Parker Games Ltd

The World's finest board games, hand made in our English workshops

Bespoke - POKER CARD SETS

A simple but fun way of presenting poker card decks. A twin deck takes its inspiration from the "matchbox" with a leather tray also containing a set of 5 poker dice. Currently being re-designed, our "cigarette pack" is a spoof of the health warnings which have been turned into gambling warnings!



Ref #	Item description	USD \$	GB £	Euro €
B-95/Mbx	Leather-bound "Matchbox" twin deck Poker card set with a set of 5 Poker dice	\$392	£245	€ 294
E-95/Mbx-WS	As above but bound in Water Snake	\$423	£264	€ 317
E-395/WS	Two deck Poker card set in Water Snake case, suede lined	\$728	£455	€ 546
B-95/CG	Single Poker deck in leather "cigarette" pack	\$344	£215	€ 258

Tel + 44 (0) 1799 599 100 Fax + 44 (0) 1799 599 733 E-mail: bespoke@geoffreyparker.com Web: www.geoffreyparker.com

Piglets Corner - Upper Green - Wimbish Village - Saffron Walden - Essex CB10 2XJ, England

Geoffrey Parker Games Ltd

The World's finest board games, hand made in our English workshops

Bespoke - BLACKJACK

For avid BlackJack players all one needs for a night of gaming is contained in this luxurious leather attache case and for one upmanship on the green baize, a superb leather card shoe dispenses one's precious cards.



Ref #	Item description	USD \$	GB £	Euro €
B-95/600-BJ	Leather Poker & BlackJack case with cloth in lid, 600 chips, 4 decks P/cards, nickel/leather Dealer button	\$3,532	£2,207	€ 2,649
B95BJS	A luxurious BlackJack card shoe entirely bound in finest Dauphin leather	\$824	£515	€ 618
B-97/Layout *	Blackjack cloth, 100 x 150 cm	\$242	£151	€ 181

Tel + 44 (0) 1799 599 100 Fax + 44 (0) 1799 599 733 E-mail: bespoke@geoffreyparker.com Web: www.geoffreyparker.com
Piglets Corner - Upper Green - Wimbish Village - Saffron Walden - Essex CB10 2XJ, England

Geoffrey Parker Games Ltd

The World's finest board games, hand made in our English workshops

Hand inlaid leather **MONOPOLY**®

A great family favourite but with a luxurious twist - *Geoffrey Parker* has created a number of luxury editions to suit different sized pockets! Our traditional hand inlaid *Bespoke* edition set with pewter pieces sits atop a beautiful scalloped-sided plinth has over 56 inlays either embossed in gold or silver. For those requiring a four-colour reproduction of logos or photographs, our printed leather version inside a plinth is just as stunning. Hidden inside the plinths are leather-bound "Bank" boxes, a pair of leather dice cups & precision dice. Monopoly® of course allows itself to be easily customised, be it a themed set (see our "Billionaire and Polo editions) or as a complete personal customisation where not only can the board and cards be changed but even the playing pieces to minatures of one's personal belongings in either Sterling silver or even solid Gold! *Anything can be done!*

E-Mono-Billionaire-SG

OB-Mono/SSP-Pwt



B-Mono/SSP-Pwt

Ref #	Item description	USD \$	GB £	Euro €
B-Mono/SSP-Pwt	Inlaid leather Monopoly® on scalloped sided plinth, complete with dice cups, Bank boxes & pewter pieces	\$5,385	£3,365	€ 4,039
E-Mono/SSP-SS	As above but with standard <i>Houses, Hotels & tokens</i> in hall marked Sterling Silver	\$9,256	£5,785	€ 6,942
OB-Mono/SSP-Pwt	As above but with printed leather Monopoly® playing board instead of hand inlaid <i>Bespoke</i> version	\$4,232	£2,645	€ 3,174
E-Mono-Billionaire-SG	Inlaid leather Monopoly® with Billionaire Sterling silver-gilt playing pieces, money and values	\$13,320	£8,325	€ 9,990
B-Mono-Polo-SS	Inlaid leather POLO themed Monopoly® in English Bridle hide with Sterling silver playing pieces	\$12,040	£7,525	€ 9,030
B-Mono-Polo-Pwt	As above but with Pewter playing pieces	\$5,536	£3,460	€ 4,152
B-Mono/Pwt-cust	<i>Personalised inlaid leather Monopoly® set with standard pewter pieces, custom printed cards allow a once only cost of £1,300 for origination & die making, Please note: Custom Mono sets can have fully personalised Sterling silver playing pieces for additional cost</i>			

Tel + 44 (0) 1799 599 100 Fax + 44 (0) 1799 599 733 E-mail: bespoke@geoffreyparker.com Web: www.geoffreyparker.com

Piglets Corner - Upper Green - Wimbish Village - Saffron Walden - Essex CB10 2XJ, England

Geoffrey Parker Games Ltd

The World's finest board games, hand made in our English workshops

Off the Bench: MONOPOLY®

Our *Off the Bench* collection of leather Monopoly® boards, showcases the latest technological advances in the ability to 4 colour print on leather. We currently offer three different presentations of this family favourite: A top a felt lined leather tray, either full board size or folded in half or in a presentation box with playing pieces (pewter), cards etc stowed below. All three editions can be customised both for themes or personally as can our traditional *bespoke* editions.

O-Mono/PB-cust



O-Mono/T



O-Mono-F



Ref #	Item description	USD \$	GB £	Euro €
O-Mono-Mat	A printed leather Monopoly® mat, suede backed in presentation box	\$663	£415	€ 497
O-Mono/PB	Printed leather Monopoly® board with pewter pieces, cards etc in cardboard presentation box	\$1,032	£645	€ 774
O-Mono/PB-cust	As above but one off custom edition (origination of £335 must be added to first one)	\$1,311	£820	€ 984
O-Mono/T	Printed leather Monopoly® board with pewter pieces, cards etc on leather felt lined tray	\$1,560	£975	€ 1,170
O-Mono/T-cust	As above but one off custom edition (origination of £335 must be added to first one)	\$1,839	£1,149	€ 1,379
O-Mono/F	Folded printed leather Monopoly® with pewter pieces, cards etc on leather felt lined tray	\$1,808	£1,130	€ 1,356
O-Mono/F-cust	As above but one off custom edition (origination of £335 must be added to first one)	\$2,093	£1,308	€ 1,570

Tel + 44 (0) 1799 599 100 Fax + 44 (0) 1799 599 733 E-mail: bespoke@geoffreyparker.com Web: www.geoffreyparker.com

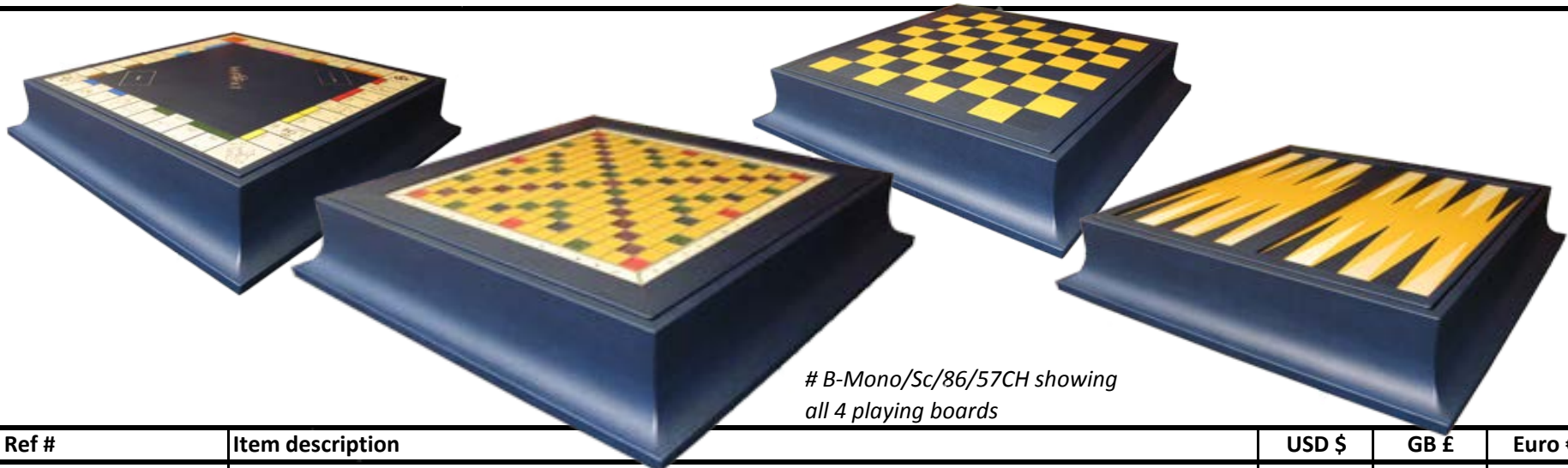
Piglets Corner - Upper Green - Wimbish Village - Saffron Walden - Essex CB10 2XJ, England

Geoffrey Parker Games Ltd

The World's finest board games, hand made in our English workshops

MONOPOLY® plinth game compendia

Making combinations of favourite games is a speciality of *Geoffrey Parker* and easy bedfellows are family favourites of Monopoly® and Scrabble® or Backgammon and Chess - or how about all four together! Obviously over famous games such as Cluedo and Trivial Pursuit can be added to the mix in any combination you so desire. All the usual different specifications are available, as are special colour-ways of your choice.



B-Mono/Sc/86/57CH showing all 4 playing boards

Ref #	Item description	USD \$	GB £	Euro €
B-Mono/SC-Club	Reversible inlaid leather MONOPOLY®/SCRABBLE® on scalloped sided plinth, pewter Monopoly® pieces, leather dice cups & Bank boxes, leather Scrabble® letters & racks, built in Lazy Susan turntable	\$5,384	£3,365	€ 4,038
B-Mono/CH57-Club	Reversible inlaid leather MONOPOLY®/CHESS on scalloped sided plinth, pewter Mono pieces, leather dice cups & Bank boxes, Boxwood "Club" Staunton design chess set	\$6,441	£4,025	€ 4,830
B-Mono/86/Prest	Reversible inlaid leather MONOPOLY®/BACKGAMMON on scalloped sided plinth, pewter Monopoly® pieces, acrylic Backgammon stones & dice	\$5,433	£3,395	€ 4,074
B-Mono/Sc/86/57CH	Double reversible inlaid leather game boards within a leather scalloped sided plinth: Monopoly® (pewter pcs), Scrabble® (leather letters/racks), Backgammon (acrylic pcs) & Staunton Chess (Boxwood)	\$9,161	£5,725	€ 6,870
O-Mono/SC-MAT	Printed reversible Monopoly® and Scrabble® mat, in cardboard presentation box with pieces	\$1,241	£775	€ 930

Tel + 44 (0) 1799 599 100 Fax + 44 (0) 1799 599 733 E-mail: bespoke@geoffreyparker.com Web: www.geoffreyparker.com

Piglets Corner - Upper Green - Wimbish Village - Saffron Walden - Essex CB10 2XJ, England

Geoffrey Parker Games Ltd

The World's finest board games, hand made in our English workshops

CLEUDO®

This great detective game is brought back to life in our *Bespoke* edition with the iconic art-work from the Sixties where the card images have been reproduced in pewter and enamel along with the murderous weapons! The intricate inlaying of the Cluedo® board is a labour of love involving many hours of skilled and patient work by our craftsmen. For those wishing a less costly way of manufacture, we are pleased to offer a printed version within our *Off the Bench collection*.



B-Cluedo/Pwt



O-Cluedo/T-Pwt

Ref #	Item description	USD \$	GB £	Euro €
B-Cluedo/Pwt	Inlaid leather Cluedo® game board on scalloped sided plinth with pewter playing pieces	\$6,336	£3,960	€ 4,752
B-Cluedo/SS	As above but playing pieces in Sterling silver	\$10,185	£6,365	€ 7,638
O-Cluedo/T-Pwt	Printed leather Cluedo® board with pewter pieces, cards etc on leather felt lined tray	\$1,504	£940	€ 1,128
O-Cluedo/Pbx-Pwt	Printed leather Cluedo® board with pewter pieces, cards etc in presentation box	\$1,095	£685	€ 821
O-Cluedo-Mat	Printed leather Cluedo® mat, suede backed with pewter pieces, cards etc in presentation box	\$839	£525	€ 630

Tel + 44 (0) 1799 599 100 Fax + 44 (0) 1799 599 733 E-mail: bespoke@geoffreyparker.com Web: www.geoffreyparker.com

Piglets Corner - Upper Green - Wimbish Village - Saffron Walden - Essex CB10 2XJ, England

Geoffrey Parker Games Ltd

The World's finest board games, hand made in our English workshops

SCRABBLE® boards & accessories

For adults and children, this famous literary game continues to amuse and tax all ages and with *Geoffrey Parker's* attention to detail, there can be no more luxurios editon around. Intricately inlaid in finest Dauphin leather and silver embossed, a raised nickel grid prevents the Birdle hide printed leather "letters" from moving position when the beautiful scalloped sided plinth is spun on its *Lazy Susan* turn-table. We now offer this iconis game in a number of languages and would be please to add more as requested. Within our *Off the Bench* collection we offer a less extravagant version in printed leather atop a simple leather tray.

B-SC-SSP



Russian Scrabble



O-SC-T-Antiqued ed.

Ref #	Item description	USD \$	GB £	Euro €
B-SC-SSP	Inlaid leather Scrabble® on scalloped sided plinth with leather letters & racks, built in Lazy Susan	\$3,864	£2,415	€ 2,898
O-SC-T	Printed leather Scrabble® board on felt leather tray with leather letters & racks	\$1,472	£920	€ 1,104
O-SC-Pbx	Printed leather Scrabble® board with leather letters & racks in presentation box	\$1,278	£799	€ 959
O-SC-Mat	Printed leather Scrabble® mat, suede backed, with leather letters & racks in presentation box	\$984	£615	€ 738
O-SC/Ltr	Set of 100 printed leather repacement Scrabble® letters in felt drawstring bag (English, French, German & Russian avaialble)	\$238	£149	€ 179
O-SC/Rk4	Set of 4 leather-bound Scrabble® letter racks, asstd cols	\$225	£141	€ 169
O-SC-LyzS	Extra for leather trimmed Lazy Susan to be installed on OTB boards	\$191	£119	€ 143

Tel + 44 (0) 1799 599 100 Fax + 44 (0) 1799 599 733 E-mail: bespoke@geoffreyparker.com Web: www.geoffreyparker.com

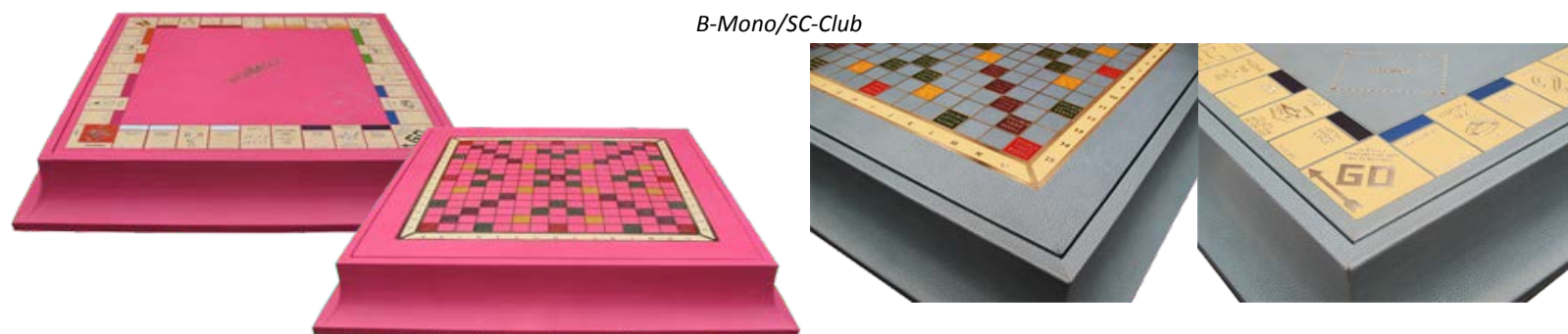
Piglets Corner - Upper Green - Wimbish Village - Saffron Walden - Essex CB10 2XJ, England

Geoffrey Parker Games Ltd

The World's finest board games, hand made in our English workshops

SCRABBLE® game compendia

Scrabble® twinned with its old sparring partner Monopoly®, what better way to spend an afternoon with the family. But no need to stop there - perhaps you prefer Backgammon or Chess as a potential partner? Or maybe all four games - *Geoffrey Parker's* craftsmen will see that you are entertained whatever your desire.



B-Mono/SC-Club

Ref #	Item description	USD \$	GB £	Euro €
B-Mono/SC-Club	Reversible inlaid leather MONOPOLY®/SCRABBLE® on scalloped sided plinth, pewter Mono pieces, leather dice cups & Bank boxes, leather Scrabble letters & racks, built in Lazy Susan turntable, felt lined	\$5,384	£3,365	€ 4,038
B-SC-CH57-Club	Reversible inlaid leather SCRABBLE®/CHESS on scalloped sided plinth, leather Scrabble letters & racks, built in Lazy Susan turntable & "Club" Staunton style Boxwood chess set, felt lined	\$4,639	£2,900	€ 3,480
B-SC-CH56-Club	Reversible inlaid leather SCRABBLE®/CHESS on scalloped sided plinth, leather Scrabble letters & racks, built in Lazy Susan turntable & inlaid leather & chrome plated SILVER JUBILEE chess set, felt lined	\$7,512	£4,695	€ 5,634
B-SC-86-Prest	Reverisble inlaid leather SCRABBLE®/BACKGAMMON on scalloped sided plinth, leather Scrabble letters & racks, acrylic Backgammon stones, dice and cube, felt lined	\$5,641	£3,525	€ 4,230
B-SC/86CS-SSP	Reversible inlaid leather SCRABBLE®/BACKGAMMON on scalloped sided plinth, leather Scrabble letters & racks, nickel/leather Contemporary Backgammon stones, standard dice & cube, felt lined	\$6,238	£3,899	€ 4,679

Tel + 44 (0) 1799 599 100 Fax + 44 (0) 1799 599 733 E-mail: bespoke@geoffreyparker.com Web: www.geoffreyparker.com

Piglets Corner - Upper Green - Wimbish Village - Saffron Walden - Essex CB10 2XJ, England

Geoffrey Parker Games Ltd

The World's finest board games, hand made in our English workshops

TRIVIAL PURSUIT®

The iconic eighties classic - Trivial Pursuit® did not escape for long the *Geoffrey Parker* treatment and has long since been a firm favourite both as a stand alone piece and within various gaming compendia. Two luxury versions are offered, either traditionally hand inlaid in Dauphin leather within our *Bespoke* collections atop a beautiful scalloped sided plinth, complete with leather question card boxes and leather dice cups or a less extravagant affair with a printed leather playing board on a hand-bound leather tray from our *Off the Bench* collection. Supplied as standard with acrylic pieces or as an extra with inlaid leather/Sterling silver.

B-TP/Club



O-TP-T

Ref #	Item description	USD \$	GB £	Euro €
B-TP/Club	Inlaid leather Trivial Pursuit® game board on scalloped sided plinth with acrylic playing pieces, felt lined	\$4,200	£2,625	€ 3,150
B-TP/SS	As above but playing pieces in Sterling silver	\$8,600	£5,375	€ 6,450
O-TP-T	Printed leather Trivial Pursuit® board with acrylic pieces, cards etc on leather felt lined tray	\$1,320	£825	€ 990
O-TP-PBx	Printed leather Trivial Pursuit® board with acrylic pieces, cards etc in a presentation box	\$984	£615	€ 738
O-TP-Mat	Printed leather Trivial Pursuit® mat, suede backed, acrylic pieces, cards etc in a pres. box	\$673	£420	€ 504

Tel + 44 (0) 1799 599 100 Fax + 44 (0) 1799 599 733 E-mail: bespoke@geoffreyparker.com Web: www.geoffreyparker.com

Piglets Corner - Upper Green - Wimbish Village - Saffron Walden - Essex CB10 2XJ, England

Geoffrey Parker Games Ltd

The World's finest board games, hand made in our English workshops

AWARD WINNING GAME CUBE

Our award winning Game Cube (in 2008 this won the British Interior Design award for "Outstanding Design") has become a favourite amongst the yachting set but is just at home in one's gaming room or as discussion as well as functional piece of furniture. Trimmed with stainless steel, there is a hand inlaid *Bespoke* edition which takes many hours of highly skilled work. Inside the cube are stowed a further 19 games making this magnificent piece a compendia of 25. Based on the same carcass but utilising new technology, our *Off the Bench* edition has 6 games in printed leather on the outside with all their components neatly stowed away in bags inside.



B-GC25-Ssl



O-GC6-Ssl



Ref #	Item description	USD \$	GB £	Euro €
O-GC6-Ssl (+s)	Printed leather (24") stainless steel trimmed GAME CUBE for 6 games	\$10,208	£6,380	€ 7,656
B-GC25-Ssl (+s)	Inlaid leather 25 GAME CUBE with stainless steel trim (24")	\$18,312	£11,445	€ 13,734
E-GC25/Champ	As above but with Sterling Silver Monopoly, Trivial Pursuit & Cluedo pieces, Chrome and leather Backgammon stones & cube and a Championship 4" King size Staunton chess set	\$31,720	£19,825	€ 23,790
O-GC6/Club	New design for 2013, an all leather 6 GAME CUBE with printed leather sides and corners	\$7,992	£4,995	€ 5,995
B-GC/Ppx-TT	Clear perspex table-top for mounting onto to the cube turning it into a full table	At	design	stage

Tel + 44 (0) 1799 599 100 Fax + 44 (0) 1799 599 733 E-mail: bespoke@geoffreyparker.com Web: www.geoffreyparker.com

Piglets Corner - Upper Green - Wimbish Village - Saffron Walden - Essex CB10 2XJ, England

Geoffrey Parker Games Ltd

The World's finest board games, hand made in our English workshops

CHILDREN'S GAMES

Born out of the success of our award winning multi Game Cube for super-yacht clients, a smaller version with a softer feel for one's children has been designed and made in printed leather to include classics like Snakes & Ladders, Ludo, Tiddly Winks and Tic Tac Toe while introducing more serious games to the little ones of Chess and Backgammon, whilst inside the cube are traditional puzzles, card games etc totalling 15 games in all. Alongside this piece are our Parlour Game Compendium which is a table-top leather box containing either Chess and Snakes & Ladders or Chess and Backgammon as the main two board games and then inside Dominoes, Bridge, Draughts (Checkers) and Poker dice.

O-102/BG



O-CHGC-15



B-101/S&L



Ref #	Item description	USD \$	GB £	Euro €
O-CHGC-15	Printed leather (12") table-top CHILDREN's GAME CUBE with 15 games, felt lined (blue or pink)	\$1,671	£1,045	€ 1,253
B-101/S&L	Inlaid leather Table-top PAROUR GAME COMPENDIUM with 6 games inc Snakes & Ladders & Chess (12.5" x 12.5" x 3")	\$1,944	£1,215	€ 1,458
O-101/S&L	Printed leather Table-top PAROUR GAME COMPENDIUM with 6 games inc Snakes & Ladders & Chess	\$1,496	£935	€ 1,122
O-102/BG	Printed leather Table-top PAROUR GAME COMPENDIUM with 6 games inc Backgammon & Chess	\$1,521	£950	€ 1,141

Tel + 44 (0) 1799 599 100 Fax + 44 (0) 1799 599 733 E-mail: bespoke@geoffreyparker.com Web: www.geoffreyparker.com

Piglets Corner - Upper Green - Wimbish Village - Saffron Walden - Essex CB10 2XJ, England

Geoffrey Parker Games Ltd

The World's finest board games, hand made in our English workshops

Bespoke - PROFESSIONAL TRAVEL GAMES

Geoffrey Parker's Bespoke range of course does not do "normal" travel, it does "professional" travel. These game combinations are for the serious player who does not want to compromise on their precious equipment while on the move - a fantastic double attaché case - a tournament size inlaid leather Backgammon case (with all the usual championship specifications available) houses an ultra-slim second attaché lavishly padded inside with felt to protect one's precious chess pieces. On the lid is a hand inlaid leather chessboard which folds out for gaming. Both games can be carried "as one" or individually if one game is more appropriate for that excursion.



B-87CS/57IC

Ref #	Item description	USD \$	GB £	Euro €
B-87/57IC/Prest	Double attache PROFESSIONAL TOURNAMENT size TRAVEL BACKGAMMON/CHESS with acrylic BG stones & "Club"	\$7,016	£4,385	€ 5,262
B-87CS/57IC	As above but with inlaid leather & nickel CONTEMPORARY Backgammon stones	\$8,127	£5,079	€ 6,095
B-87CS/56IC	As above but with Chrome inlaid leather SILVER JUBILEE CHESS set	\$10,536	£6,585	€ 7,902
B-87CH/57SF/IC	As above but with CONTEMPORARY BG stones & "SPASSKY & FISCHER Staunton chess set	\$10,120	£6,325	€ 7,590
B-87CS/56IC	As above but with Acrylic BG stones & "SPASSKY & FISCHER Staunton chess set	\$9,425	£5,891	€ 7,069

Tel + 44 (0) 1799 599 100 Fax + 44 (0) 1799 599 733 E-mail: bespoke@geoffreyparker.com Web: www.geoffreyparker.com

Piglets Corner - Upper Green - Wimbish Village - Saffron Walden - Essex CB10 2XJ, England

Geoffrey Parker Games Ltd

The World's finest board games, hand made in our English workshops

Bespoke - TRAVEL GAMES

Designed back in the eighties for the *Venice Simplon Orient Express* our "handsize" magnetic leather Backgammon (# B-81) is a lovely little set. Extra tall leather inlaid wooden stones/checkers makes handling during the game easy and combined with an inlaid leather chessboard on the outside (# B-805) with miniature magnetic wooden Staunton style chessmen, makes a great travelling compendium.



Ref #	Item description	USD \$	GB £	Euro €
B-81/Prest	Inlaid leather HANDSIZE MAGNETIC BACKGAMMON with leather/wooden stones	\$943	£590	€ 708
B-805/Prest	Inlaid leather HANDSIZE CHESS/BACKGAMMON with leather & wood Chessmen & stones	\$1,257	£785	€ 942

Tel + 44 (0) 1799 599 100 Fax + 44 (0) 1799 599 733 E-mail: bespoke@geoffreyparker.com Web: www.geoffreyparker.com

Piglets Corner - Upper Green - Wimbish Village - Saffron Walden - Essex CB10 2XJ, England

Geoffrey Parker Games Ltd

The World's finest board games, hand made in our English workshops

Off the Bench - TRAVEL GAMES

For the traveller who who prefers their games to feel more like their full size counterparts. Inspired by our work back in the eighties for the *Venice Simplon Orient Express* our "handsize" magnetic leather Backgammon (# O-81) is a lovely little set. Extra tall leather inlaid wooden stones/checkers makes handling during the game easy and combined with an printed leather chessboard on the outside (# O-805) with miniature magnetic wooden Staunton style chessmen, makes a great travelling compendium. For those who require a super-slim compendium, our # O-555 has 3 games in one - Backgammon, Chess and Draughts (Checkers). Hand inlaid leather playing pieces reverse from chess to Backgammon or Draughts (Checkers) pieces. Printed leather playing fields inside and out. Dice and playing pieces are safely stowed within the case which closes with a hidden magnet and is presented in a neat felt drawstring bag.



O-555 Size closed: 251mm x 142mm x 32mm (9.88" x 5.5" x 1.26")

O-81 & O-805 Size closed 172 x 102 x 59 mm (6.77" x 4" x 2.3")

Ref #	Item description	USD \$	GB £	Euro €
O-555	Printed leather ULTRA SLIM MAGNETIC Chess/Backgammin/Draughts set with acrylic/leather pieces	\$736	£460	€ 552
O-81	Printed leather HANDSIZE MAGNETIC BACKGAMMON with leather/wooden stones	\$832	£520	€ 624
O-805	Printed leather HANDSIZE CHESS/BACKGAMMON with leather & wood Chessmen & stones	\$1,145	£715	€ 858

Tel + 44 (0) 1799 599 100 Fax + 44 (0) 1799 599 733 E-mail: bespoke@geoffreyparker.com Web: www.geoffreyparker.com

Piglets Corner - Upper Green - Wimbish Village - Saffron Walden - Essex CB10 2XJ, England

Geoffrey Parker Games Ltd

The World's finest board games, hand made in our English workshops

TRAVEL ROLL-UPS

A range of *Roll-up* games with printed leather playing fields and non-slip rubber backs. A new full size Backgammon but with hard sides like an attaché case but as a roll-up! Great for a day at the beach. Scrabble, a great brain teaser for lazy days away, but of course in a luxury presentation and rolled up to fit easily within ones luggage!



Ref #	Item description	USD \$	GB £	Euro €
O-RU/SC	Printed leather small ROLL-UP SCRABBLE with leather letters & racks	At	Design	Stage
O-RU/CH	Printed leather small ROLL-UP CHESS & DRAUGHTS SET with acrylic/leather pieces	At	Design	Stage
O-PRL/180	Printed leather small ROLL-UP BACKGAMMON with acrylic stones	\$318	£199	€ 239
O-PRL/180-RDC	As above but with a pair of leather dice cups	\$478	£299	€ 359
O-PRL/380	Full size printed leather ROLL-UP BEACH BACKGAMMON, canvas carry bag with acrylic stones (1.5"/ 38mm)	\$958	£599	€ 719
O-PRL/380-RDC	As above but with a pair of leather dice cups	\$1,200	£750	€ 900

Tel + 44 (0) 1799 599 100 Fax + 44 (0) 1799 599 733 E-mail: bespoke@geoffreyparker.com Web: www.geoffreyparker.com

Piglets Corner - Upper Green - Wimbish Village - Saffron Walden - Essex CB10 2XJ, England

Geoffrey Parker Games Ltd

The World's finest board games, hand made in our English workshops

Bespoke - GARDEN GAMES

Traditionally made in England, traditionally played in France - Boulé or Pétanque is given the luxury treatment - be the chicest on the provincial village square with our Dauphin calf Boulé attache (also available in exotic Water Snake). What could be better than an afternoon of gaming in an English garden on the few days when we are lucky enough to enjoy some sunshine. Our Bridle hide trimmed traditional English willow basket has all one needs for lawn fun with 15 classic games including Croquet, Cricket, Skittles, Boulé, Badmington, Quoits and many more.



B-CRQ/Wkr (closed)



B-Boule/Dph



B-GGC/Wkr-Club (detail)

Ref #	Item description	USD \$	GB £	Euro €
B-GGC/Wkr-Club	Giant wicker basket with Bridle hide straps complete with 15 classic Garden Games	\$6,801	£4,250	€ 5,101
B-Boule/Wkr	Competition BOULÉ basket with Bridle hide handle & straps, complete with measure & leather scorer	\$1,559	£975	€ 1,170
B-Boule/Dph	Luxurious leather-bound attache case with 6 professional BOULÉ, measure & leather scorer	\$2,688	£1,680	€ 2,016
E-Boule/WS	As above but in exotic WATER SNAKE	\$2,718	£1,699	€ 2,039
B-Boule/Auto or CF	As above found in AUTOMOTIVE hide or "Carbon Fibre" leather	\$2,713	£1,695	€ 2,034
B-CRQ/Wkr	Four player CROQUET set in wicker basket with traditional Bridle hide straps	\$2,608	£1,630	€ 1,956

Tel + 44 (0) 1799 599 100 Fax + 44 (0) 1799 599 733 E-mail: bespoke@geoffreyparker.com Web: www.geoffreyparker.com

Piglets Corner - Upper Green - Wimbish Village - Saffron Walden - Essex CB10 2XJ, England

Geoffrey Parker Games Ltd

The World's finest board games, hand made in our English workshops

LEATHER GAMING PLACE MATS

What better way to finish an evenings dinner with games for everyone including the kids - a printed leather place mats doubles for Chess/ Draughts, Backgammon, Tiddly Winks, Ludo, Snakes & Ladders and Tic Tac Toe. All the playing pieces are included within the presentation box and matching leather "dice" design coasters complete this fun compendium. Mats can be easily used when travelling as a neat slim game board one can easily slip into luggage taking up little space.



Ref #	Item description	USD \$	GB £	Euro €
O-GPL/6	Printed leather GAMING PLACE MATS & COASTERS comprising Backgammon, Chess, Snakes & Ladders, Ludo, Tic tac Toe, Tiddly Winks, complete with playing pieces, boxed	\$1,112	£695	€ 834

Tel + 44 (0) 1799 599 100 Fax + 44 (0) 1799 599 733 E-mail: bespoke@geoffreyparker.com Web: www.geoffreyparker.com
Piglets Corner - Upper Green - Wimbish Village - Saffron Walden - Essex CB10 2XJ, England

Geoffrey Parker Games Ltd

The World's finest board games, hand made in our English workshops

Bespoke - 33 GAME TABLE - Contemporary design

If you are looking for the World's most extensive gaming table - this is it - a total of 33 games are neatly stores away in the elegant contemporary table. Bound by hand in fine Dauphin leather and trimmed with stainless steel, the table reveals it's hidden secrets by simply pivoting the centre panel which then reveals a Mahogany balanced Roulette wheel. Above this suede lined space one can install game boards from the cupboard below including Backgammon, Chess, Monopoly, Scrabble, Trivial Pursuit, Cluedo. Children's games such as Snakes and Ladders, Ludo and Tiddly Winks or for adult gamblers, Poker, Blackjack. Available in all Dauphin colours to order.



Ref #	Item description	USD \$	GB £	Euro €
B-GT33/Nkl (+s)	33 Game table in Dauphin leather with stainless steel trim	\$23,203	£14,502	€ 17,403

Tel + 44 (0) 1799 599 100 Fax + 44 (0) 1799 599 733 E-mail: bespoke@geoffreyparker.com Web: www.geoffreyparker.com

Piglets Corner - Upper Green - Wimbish Village - Saffron Walden - Essex CB10 2XJ, England

Geoffrey Parker Games Ltd

The World's finest board games, hand made in our English workshops

Bespoke - ULTIMATE GAME TABLE

The "Ultimate Game Table" has long been a favourite of those who seek the best in home gaming within an elegant piece of furniture. Concealing eight games from tournament size Backgammon to championship Chess and below these layers, a beautiful card table in finest gaming cloth allows Poker, Bridge and other card games to be played. As it that was not enough, hidden below this layer is a Roulette layout which splits into 2 revealing a Mahogany Roulette wheel with 1,200 professional 100% clay 10gm chips, a Cropier's rake and win marker. We have designed the legs to be removable for easy installation and shipping. Available in different fine woods as indicated below.

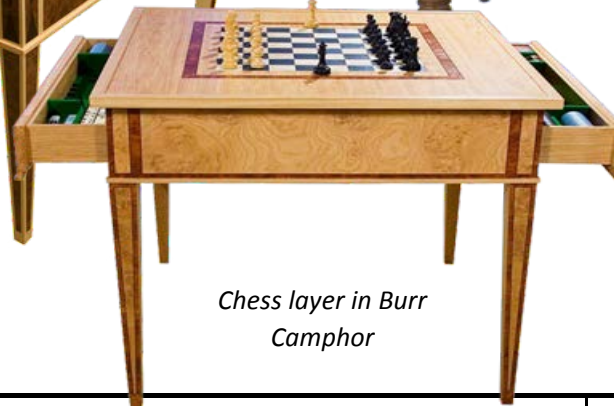
Backgammon layer in Sycamore

Table closed in Mahogany



Roulette layer in American Walnut

Chess layer in Burr Camphor



Ref #	Item description	USD \$	GB £	Euro €
B-GT8/Champ (+s)	Eight game table with weighted leather BG stones, 4" Championship Ebony & Boxwood Chess set	\$31,992	£19,995	€ 23,994
B-GT8/Prest (+s)	As above but with acrylic BG stones/cube & a "Club" Staunton design Boxwood chess set	\$28,847	£18,030	€ 21,635
B-GT8/CS (+s)	As above but with inlaid leather & nickel CONTEMPORARY BG stones/cube & a "Club" Staunton design Boxwood chess set	\$30,984	£19,365	€ 23,238
B-87CS/56IC (+s)	As above but with Chrome inlaid leather SILVER JUBILEE CHESS set	\$32,335	£20,209	€ 24,251

Tel + 44 (0) 1799 599 100 Fax + 44 (0) 1799 599 733 E-mail: bespoke@geoffreyparker.com Web: www.geoffreyparker.com

Piglets Corner - Upper Green - Wimbish Village - Saffron Walden - Essex CB10 2XJ, England

Geoffrey Parker Games Ltd

The World's finest board games, hand made in our English workshops

Bespoke - COFFEE GAME TABLES

Following requests that our hugely successful gaming tables be made in a more informal everyday living style, we have introduced this new range of Coffee Game Tables available both in leather (with stainless steel trim) and beautiful wood veneers. In the centre of each table, there is a concealed compartment which can house all manner of games, from our standard option of traditional pairings of Backgammon, Chess and Bridge to family favourites as Monopoly® and Scrabble® - the combinations are many and are built to order in our usual wide array of leather colours. Below are our standard specification tables - as with all *Geoffrey Parker* products, gaming accessories can be up-graded as required.



Ref #	Item description	USD \$	GB £	Euro €
B-CGT/Vnr-Mac (+s)	Coffee game table in polished Macassar Ebony with Chess, Backgammon & Card table	\$11,320	£7,075	€ 8,490
B-CGT/Dauphin (+s)	As above but bound in finest Dauphin leather and trimmed with stainless steel	\$7,520	£4,700	€ 5,640
B-CGT/Auto (+s)	As above but bound in semi-perforated Automotive hide and trimmed with stainless steel	\$7,856	£4,910	€ 5,892
B-CGT/BH (+s)	As above but bound in traditional English Bridle hide and trimmed with stainless steel	\$7,359	£4,599	€ 5,519

Tel + 44 (0) 1799 599 100 Fax + 44 (0) 1799 599 733 E-mail: bespoke@geoffreyparker.com Web: www.geoffreyparker.com

Piglets Corner - Upper Green - Wimbish Village - Saffron Walden - Essex CB10 2XJ, England

Geoffrey Parker Games Ltd

The World's finest board games, hand made in our English workshops

Bespoke - BACKGAMMON TABLES

For the serious Backgammon player who wants their board available at all times and ready for play. For a stunning contemporary look, we have twinned semi-perforated automotive hide with a super fast Dauphin leather for the playing field. All gaming accessories have their place, even the precision dice which are provided as "standard". Available in two sizes, *competition* or *tournament*. Pictured below with contemporary stones/checkers this can of course be specified with any GP Backgammon accessories, please ask for details.



B-BGT/87CS

Ref #	Item description	USD \$	GB £	Euro €
B-BGT/87CS (+s)	Automotive Tournament size Backgammon table with Dauphin leather playing field with nickel/leather stones & cube	\$9,200	£5,750	€ 6,900
B-BGT/89CS (+s)	As above but Competition size	\$9,911	£6,195	€ 7,434

Tel + 44 (0) 1799 599 100 Fax + 44 (0) 1799 599 733 E-mail: bespoke@geoffreyparker.com Web: www.geoffreyparker.com

Piglets Corner - Upper Green - Wimbish Village - Saffron Walden - Essex CB10 2XJ, England

Geoffrey Parker Games Ltd

The World's finest board games, hand made in our English workshops

Bespoke - BRIDGE TABLES

For the avid Bridge player, a series of contemporary designs drawing inspiration from traditional tables of the past.

AT DESIGN STAGE

Ref #	Item description	USD \$	GB £	Euro €

Tel + 44 (0) 1799 599 100 Fax + 44 (0) 1799 599 733 E-mail: bespoke@geoffreyparker.com Web: www.geoffreyparker.com
Piglets Corner - Upper Green - Wimbish Village - Saffron Walden - Essex CB10 2XJ, England

Geoffrey Parker Games Ltd

The World's finest board games, hand made in our English workshops

Bespoke - CASINO TABLES

The challenge - *to bring the functionality of casino game tables into the elegant drawing rooms of our customers.* This is the task we are currently embarking on with casino favourites BlackJack, Bacaratt and Roulette (Poker has its own page) - *watch this space.....*

AT DESIGN STAGE

Ref #	Item description	USD \$	GB £	Euro €

Tel + 44 (0) 1799 599 100 Fax + 44 (0) 1799 599 733 E-mail: bespoke@geoffreyparker.com Web: www.geoffreyparker.com

Piglets Corner - Upper Green - Wimbish Village - Saffron Walden - Essex CB10 2XJ, England

Geoffrey Parker Games Ltd

The World's finest board games, hand made in our English workshops

Bespoke - POKER TABLES

Six and eight player poker tables built for the home player who requires not only a functional piece but an elegant piece of furniture to sit alongside one's other fine pieces. *Geoffrey Parker* has set out to achieve just that - firstly with a leather and gaming cloth design and soon to be joined with a fine wood collection.



B-PKGT/Hx/6



B-94-6-Zeb



Ref #	Item description	USD \$	GB £	Euro €
B-PKGT/Hx/6 (+s)	Six player Poker table bound in finest Dauphin calf with Billiard cloth card table, chips & cards	\$11,721	£7,326	€ 8,791
B-94-6-Zeb (+s)	Zebrano/stainless-steel six player Poker/Blackjack table, complete with cards, chips, drinks holders	\$22,241	£13,900	€ 16,680

Tel + 44 (0) 1799 599 100 Fax + 44 (0) 1799 599 733 E-mail: bespoke@geoffreyparker.com Web: www.geoffreyparker.com

Piglets Corner - Upper Green - Wimbish Village - Saffron Walden - Essex CB10 2XJ, England

Geoffrey Parker Games Ltd

The World's finest board games, hand made in our English workshops

Bespoke - PEDESTAL GAME TABLES

A small (600mm square) elegant pedestal table but with hidden depths! Beautifully crafted by our master cabinet makers, this Sycamore and Burr Elm table offers a Billiard cloth Bridge table and also a hand inlaid leather Chess and Backgammon set. Available in different fine woods (by special order) and soon in Dauphin leather. Gaming pieces can be upgraded if so required.



Backgammon layer

Ref #	Item description	USD \$	GB £	Euro €
B-PDST/3-T-CS (+s)	Pedestal Game table in Sycamore with Chess, Backgammon & Bridge	\$13,552	£8,470	€ 10,164
B-GT8-Pdst (+s)	Pedestal "Ultimate" eight game table show in Black American Walnut ("Ultimate 8 Game Table for more details)	\$30,984	£19,365	€ 23,238

Tel + 44 (0) 1799 599 100 Fax + 44 (0) 1799 599 733 E-mail: bespoke@geoffreyparker.com Web: www.geoffreyparker.com

Piglets Corner - Upper Green - Wimbish Village - Saffron Walden - Essex CB10 2XJ, England

Geoffrey Parker Games Ltd

The World's finest board games, hand made in our English workshops

Bespoke - SUBBUTEO® & POKER TABLE

Dad's especially in their 40s or above will fondly recall hours of fun (and frustration) playing Subbuteo® on the table or carpet back in the seventies when this was THE football game! However, many a time the ball was either lost under furniture or trodden on by one's dad, along with a "player" who would thus be severed from it's base resulting in many hours of patiently gluing the players back together. This is a thing of the PAST now, thanks to *Geoffrey Parker's* craftsmen who have created the ultimate in Subbuteo®. No more edges of the pitch curling up or lost balls and damaged players for a complete stadium has been built to enclose the game just like a real stadium. Each side of the "stands" have been bound by hand in printed leather depicting the crowd and even there is a roof over the "crowd" which can carry your favourite teams name or be left as is (*i.e. North/South/East/West stand*) to save arguments. Hidden away in two drawers are all 20 Premiership teams, complete with accessories and metal shafted goalkeepers. The pitch is in fine gaming cloth and the goals are fixed in place. As if that was not enough, we have twinned a poker table on the reverse of the leather table-top for a real "boys" (or girls) night in! Available either in super-car automotive hide or Dauphin leathers.



Drawers both ends for Subbuteo® & Poker accessories

Subbuteo® stadium ready for play

Ref #	Item description	USD \$	GB £	Euro €
B-Sub/95Pk-Dauph (+s)	Subbuteo® "stadium" with reversible table/poker top, complete with teams & chips/cards, bound in Dauphin calf	\$13,380	£8,363	€ 10,035
B-Sub/95Pk-Auto (+s)	As above but bound in semi-perforated Automotive hide	\$13,476	£8,423	€ 10,107

Tel + 44 (0) 1799 599 100 Fax + 44 (0) 1799 599 733 E-mail: bespoke@geoffreyparker.com Web: www.geoffreyparker.com

Piglets Corner - Upper Green - Wimbish Village - Saffron Walden - Essex CB10 2XJ, England

Geoffrey Parker Games Ltd

The World's finest board games, hand made in our English workshops

Bespoke - TABLE FOOTBALL

Not always a thing of beauty, our quest is to produce this fun adult and children's game in a way that is both aesthetically pleasing and highly functional.

AT DESIGN STAGE

Ref #	Item description	USD \$	GB £	Euro €

Tel + 44 (0) 1799 599 100 Fax + 44 (0) 1799 599 733 E-mail: bespoke@geoffreyparker.com Web: www.geoffreyparker.com
Piglets Corner - Upper Green - Wimbish Village - Saffron Walden - Essex CB10 2XJ, England

Geoffrey Parker Games Ltd

The World's finest board games, hand made in our English workshops

Bespoke - POOL TABLE COMPENDIA

A magnificent professional specification tournament size American pool table has been given the *Geoffrey Parker* treatment. Clad in either Duphin leather, Bridle or Automotive hide or even exotics, this table can have a number of Pool cloth colours for the playing surface and comes complete with a reversible table-top which has a full size table-tennis table on the reverse! As if this was not enough - as an optional extra one can also have concealed within the table Chess and Backgammon and even a BlackJack table!

AT DESIGN STAGE

Ref #	Item description	USD \$	GB £	Euro €

Tel + 44 (0) 1799 599 100 Fax + 44 (0) 1799 599 733 E-mail: bespoke@geoffreyparker.com Web: www.geoffreyparker.com

Piglets Corner - Upper Green - Wimbish Village - Saffron Walden - Essex CB10 2XJ, England

Geoffrey Parker Games Ltd

The World's finest board games, hand made in our English workshops

Bespoke - GENTLEMAN'S DRESSING CASES

What do you get the "man who has everything" - a super large Gentleman's requisit chest, lavishly lined in sumptuous suede and bound by hand in either Dauphin leather, Automotive or Bridle hide or in exotic skins. Thirty-six recesses for cuff-links, a dozen watch pockets and the top layer has plenty of stowage room for one's passport, pens, keys, loose change and mobile/PDA. Secured by a solid brass gold or nickel plated lock.



B-GDC/Dauph

Ref #	Item description	USD \$	GB £	Euro €
B-GDC/Dauph	Magnificent Gentleman's Dressing case, bound in finest Dauphin calf, lined in sumptuous suede	\$6,536	£4,085	€ 4,902
B-GDC/Auto or BH	As above but bound in semi-perforated Automotive hide or traditional English Bridle hide	\$7,016	£4,385	€ 5,262
E-GDC/WS	As above but bound in exotic Water Snake	\$6,496	£4,060	€ 4,872
E-GDC/Allig	As above but bound in exotic Alligator	\$31,992	£19,995	€ 23,994

Tel + 44 (0) 1799 599 100 Fax + 44 (0) 1799 599 733 E-mail: bespoke@geoffreyparker.com Web: www.geoffreyparker.com

Piglets Corner - Upper Green - Wimbish Village - Saffron Walden - Essex CB10 2XJ, England

Geoffrey Parker Games Ltd

The World's finest board games, hand made in our English workshops

LEATHER VANITY FAIR & GILROY PLACE MATS

Drawing from an extensive private collection of Victorian/Edwardian caricatures, numerous subjects can be made up a luxury gift sets of leather place mats for lawyers/attorneys, sportsmen, politicians, thespians, writers, the Military, Royals and doctors/scientists from the fabled weekly London journal, *Vanity Fair*, published from 1849 to 1914. Equally interesting and a insight into life of the times are the , sometime grotesque cartoons of James Gillray - this set of war and gluttony are a great talking point around the dinner table.

AT DESIGN STAGE - COMING SOON

Ref #	Item description	USD \$	GB £	Euro €
O-PM/VFP	Printed leather VANITY FAIR PLACE MATS themed to include LEGAL, MUSIC, CRICKETERS, MEDICINE, POLO, HORSE RACING, POLITICS, ROYALS & LADIES from 1849 to 1914.	AT	DESIGN	STAGE
O-PM/Glry	Printed leather GILLRAY PLACE MATS from historic cartoonist, James Gilroy (1756 to 1815)	AT	DESIGN	STAGE

Tel + 44 (0) 1799 599 100 Fax + 44 (0) 1799 599 733 E-mail: bespoke@geoffreyparker.com Web: www.geoffreyparker.com

Piglets Corner - Upper Green - Wimbish Village - Saffron Walden - Essex CB10 2XJ, England

Geoffrey Parker Games Ltd

The World's finest board games, hand made in our English workshops

Bespoke - DECISION CUBES

A fun but also luxurious inlaid leather Decision cube trimmed in nickel. Numerous titles to amuse one - use it to "decide" or simply as a fun paperweight! Supplied in a felt drawstring bag. Should it be required for corporate gift purposes the cubes can be personalised with any message for a small, once only, origination fee.



B-DC/Nkl-Boss

B-DC/Nkl-Val

B-DC/Nkl-Gamb

B-DC/Nkl-Girly

B-DC/Nkl-WSt

B-DC/Nkl-Cas

B-DC/Nkl-Sex

Ref #	Item description	USD \$	GB £	Euro €
B-DC/Nkl-Boss	Inlaid leather "THE BOSS" DECISION CUBE	\$80	£49.95	€ 60
B-DC/Nkl-Girly	Inlaid leather "GIRLY" DECISION CUBE	\$80	£49.95	€ 60
B-DC/Nkl-Sex	Inlaid leather "SEX" DECISION CUBE	\$80	£49.95	€ 60
B-DC/Nkl-Cas	Inlaid leather "CASINO" DECISION CUBE	\$80	£49.95	€ 60
B-DC/Nkl-Gamb	Inlaid leather "GAMBLING" DECISION CUBE	\$80	£49.95	€ 60
B-DC/Nkl-Val	Inlaid leather "VALENTINE/ROMANCE" DECISION CUBE	\$80	£49.95	€ 60
B-DC/Nkl-WSt	Inlaid leather "WALL STREET" DECISION CUBE	\$80	£49.95	€ 60

Tel + 44 (0) 1799 599 100 Fax + 44 (0) 1799 599 733 E-mail: bespoke@geoffreyparker.com Web: www.geoffreyparker.com

Piglets Corner - Upper Green - Wimbish Village - Saffron Walden - Essex CB10 2XJ, England

Geoffrey Parker Games Ltd

The World's finest board games, hand made in our English workshops

CORPORATE GIFTS

For getting your corporate message across, what could be better than a luxury presentation of your CD/DVD in a stitched leather cover, either silver or gold embossed with your logo/message or this can be made in printed leather in full colour! Alternative a non-slip rubber backed de-luxe leather Mouse Mat in printed leather is a daily reminder to clients that you stand for tradition and quality.



Ref #	Item description	USD \$	GB £	Euro €
B-DVD/CD	Dauphin calf leather DVD/CD envelopes, gold or silver embossed	\$68	£43	€ 51
O-DVD/CD	As above but printed in 4 colour on cow hide	\$68	£43	€ 51
O-MM/6	Luxury printed leather custom Mouse Mats on 6mm non-slip rubber back	\$60	£38	€ 45

Tel + 44 (0) 1799 599 100 Fax + 44 (0) 1799 599 733 E-mail: bespoke@geoffreyparker.com Web: www.geoffreyparker.com

Piglets Corner - Upper Green - Wimbish Village - Saffron Walden - Essex CB10 2XJ, England