

Kentec.



QUALITY **COMMITMENT** **PARTNERSHIP**
Reliable Electronic Manufacturing Service Provider

KENMEC GROUP

 廣運機械

 Kentec · 金運科技

 TAINERGY 太極能源

6125
Over-The-Counter

5235
Pre-IPO

4934
Taiwan Stock Exchange

1976 Founded

2010 Founded

2008 Founded

Inv. Capital: US\$85M

Inv. Capital: US\$31.5M

Inv. Capital: US\$68.87M

3 Factories in Taiwan,
1 factory in Suzhou China,
1 factory in HàNộ Vietnam.

1 Factory in Chungli Taiwan
1 Factory in SuZhou China.

1 Factory in Chungli Taiwan
1 Factory in Kunshan China.

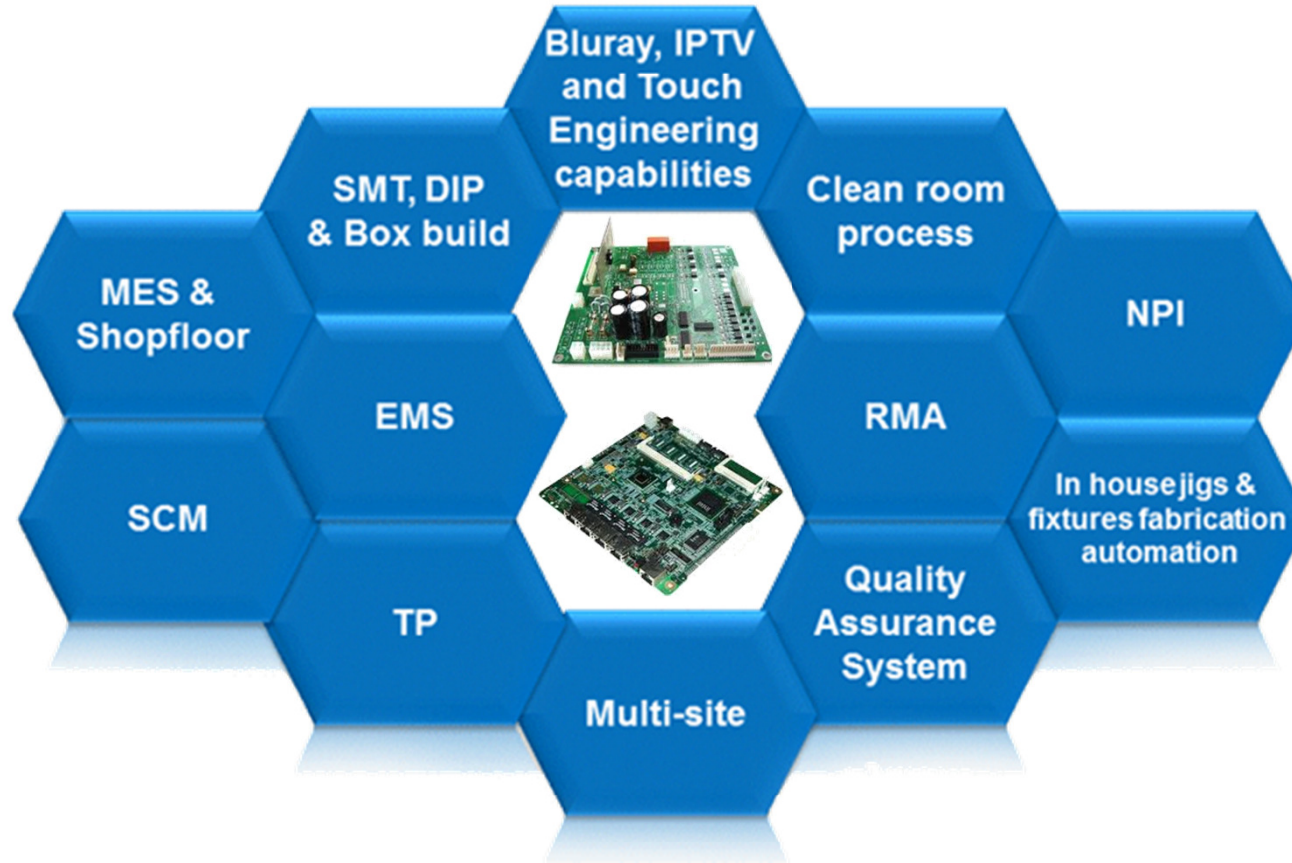


- Factory Automation
- Power Generation System.
- Logistics & Auto-Storage System.
- Sorting & Labeling System.

- Electronics Manufacturing Services
- (Build-To-Print)
- SMT, DIP, Assembly, Packaging.
- Bonded Factory Storage/ logistics

- High Efficiency Solar Cell.
- Solar Module.

Kentec



Electronics Manufacturing Services

Kentec • Company Quality Policy

4



ISO 9001-2008



OHSAS 18001-2007



ISO 14001-2004



QC 080000



ISO/TS16949:2009



ISO13485:2003

Kentec Quality Policy

The goal of Kentec Inc. is to provide quality solutions that exceed our customer's expectations. This is achieved through professional management leadership, total commitment on internal and customer growth, long term investments in state of the art process and technologies, strictly adhere to quality requirements, teamwork with effective communications and finding solutions on challenging business objectives.

All members of Kentec are empowered to drive for improvements on all activities and processes, all improvements shall benefit customers, shareholders and employees globally.

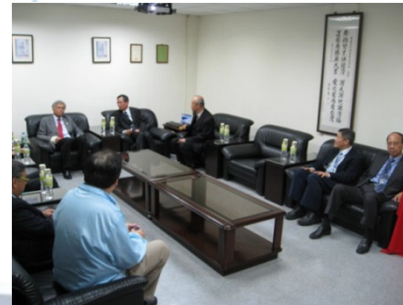
It is Kentec's mission to fully align our business with the best people, best processes and best supply base to provide world-class services.

To "build-in" quality from the beginning through common objectives will ensure our quality and competitiveness, to perform excellently and satisfy our valued customers.

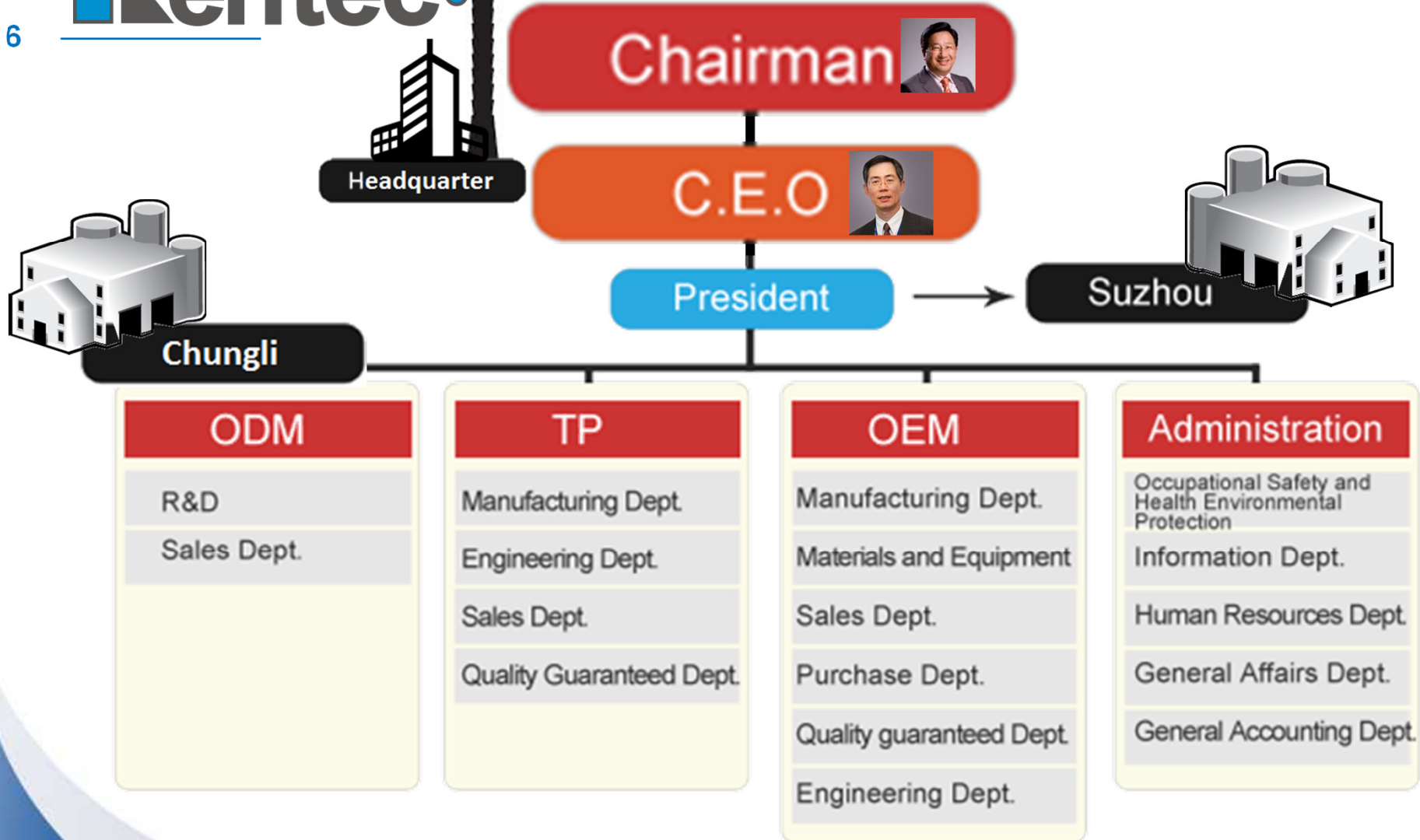
CEO

S. F. Nan

Kentec • HQ and Manufacturing Plants Locations



Organizational Chart





ISO-90000 / ISO-14000, ISO-13485, QC-080000, OHSAS-18000, TS-16949.



ISO-90001 / ISO-14001, ISO-13485, QC-080000, OHSAS-18000, TS-16949.

8



Build to Print (SMT/PCB Assembly)



**Panasonic
CM602**



**Panasonic
CM402**



**Panasonic
DT401**



SP18



**TRI
SPI-TR7006LL**



**TAMURA
TNR-50-6910PH**



7 SMT Lines, Capacity: 288,000K points /month
2 PCB Assembly Lines, Capacity: 200K pcs/month



31 SMT Lines, Capacity: 1,274,000K points /month
6 PCB Assembly Lines with Wave Solder Machines, Capacity: 600K pcs/month



Display Enhancement Camera Lens Assembly



Function Tests



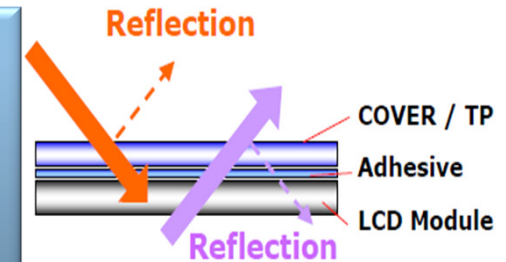
Class 1000 Clean Room

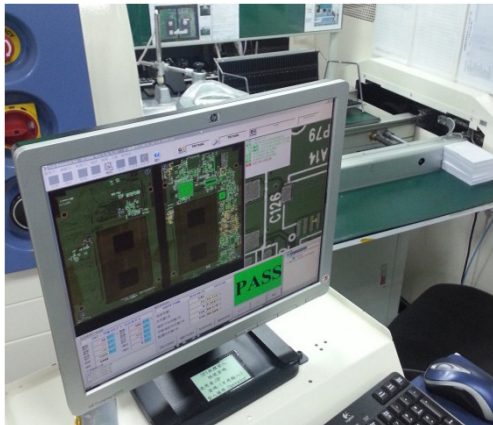


- LOCA Production (Liquid Optically Clear Adhesive)
- 10.1" G/G Capacity: 30k Semi-Automatic / 60K Automatic



- T/P OEM: 10.1" Capacity: 150K
- LCM OEM: 10.1" Capacity: 100K





8 Assembly & Test Lines, 1 Free-Flow TV Assembly, 3 Packaging Lines.



7 Assembly, Test, Packaging Lines, 1 Burn-in Room (40 m² at constant 65°C)

Kentec • Quality Control Management System



AOI



ICT



X-Ray

Environmental
Test ChamberSolder Paste
Thickness
CheckerPCB Dimension
CheckerXRF-X-Strata980
RoHS / WEEE /
ELV / HIREL Tests

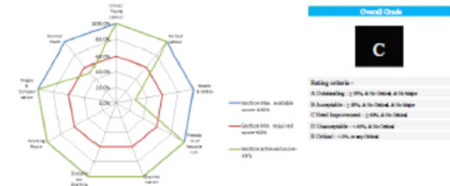
- A. MES/Manufacturing Execution System
- C. OA System Interface
- E. The Equipment Maintains System
- G. MRO Purchasing System

- B. ERP System
- D. Document Control System
- F. Gauge Management System
- H. Control System of Component Mark



SGS Social Compliance Factory Assessment Report

No.	Section	Score Possible	Score Achieved	Score Rating	Min. Requirement	No. of Critical Issues	No. of Major Issues	No. of Minor Issues
1	Child / Young Labour	4	4	100.0%	80%	0	0	0
2	Forced Labour	10	10	100.0%	80%	0	0	0
3	Health & Safety	40	32	80.0%	80%	0	0	1
4	Freedom of Association	4	4	100.0%	80%	0	0	0
5	Discrimination	3	3	100.0%	80%	0	0	0
6	Disciplinary Practices	3	3	100.0%	80%	0	0	0
7	Working Hours	6	6	100.0%	80%	0	0	0
8	Wages & Compensation	10	10	100.0%	80%	0	0	0
9	Environment	13	4	30.8%	80%	0	1	1
Total score/total		119	87	73.1%	80%	0	1	2



Observation Summary:
 The audit findings are listed against the observation, indicator, risk, implication and consequence, and discussion & remedial action.
 Overall remarks:
 Nil

Additional comments (if any):
 Remarks: Based on on-site observation, only one (01) and one assembly production line was working during audit day, other production lines were off during audit day.

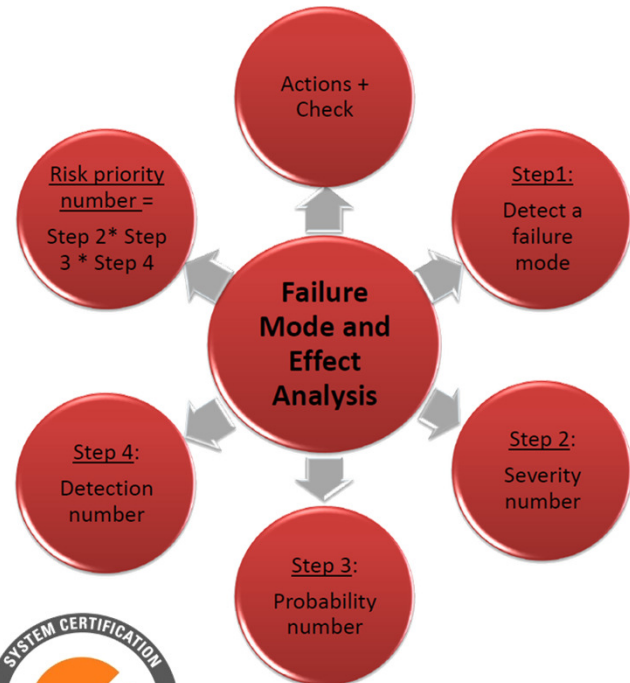
BSCI An initiative of the Foreign Trade Association (FTA)
 Business Social Compliance Initiative

Home News Resources Capacity Building

You are here: [Producer Profile](#)

Kentec Inc. (332404)

Taiyuan, Taiwan, Taiwan
 Other Names:
 Nil
 (+) More...



Kentec • Product Lines & Licensed Technologies

Camera & Surveillance



Notebooks & IPC Motherboards



Smartphones, Tablets, E-Books



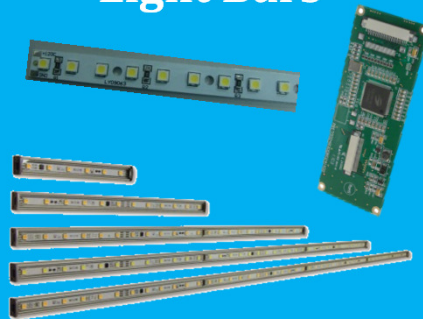
Telecommunication & GPS Products



TFT-LCD Displays



T-Con Board & Light Bars



Medical Monitors & Equipments



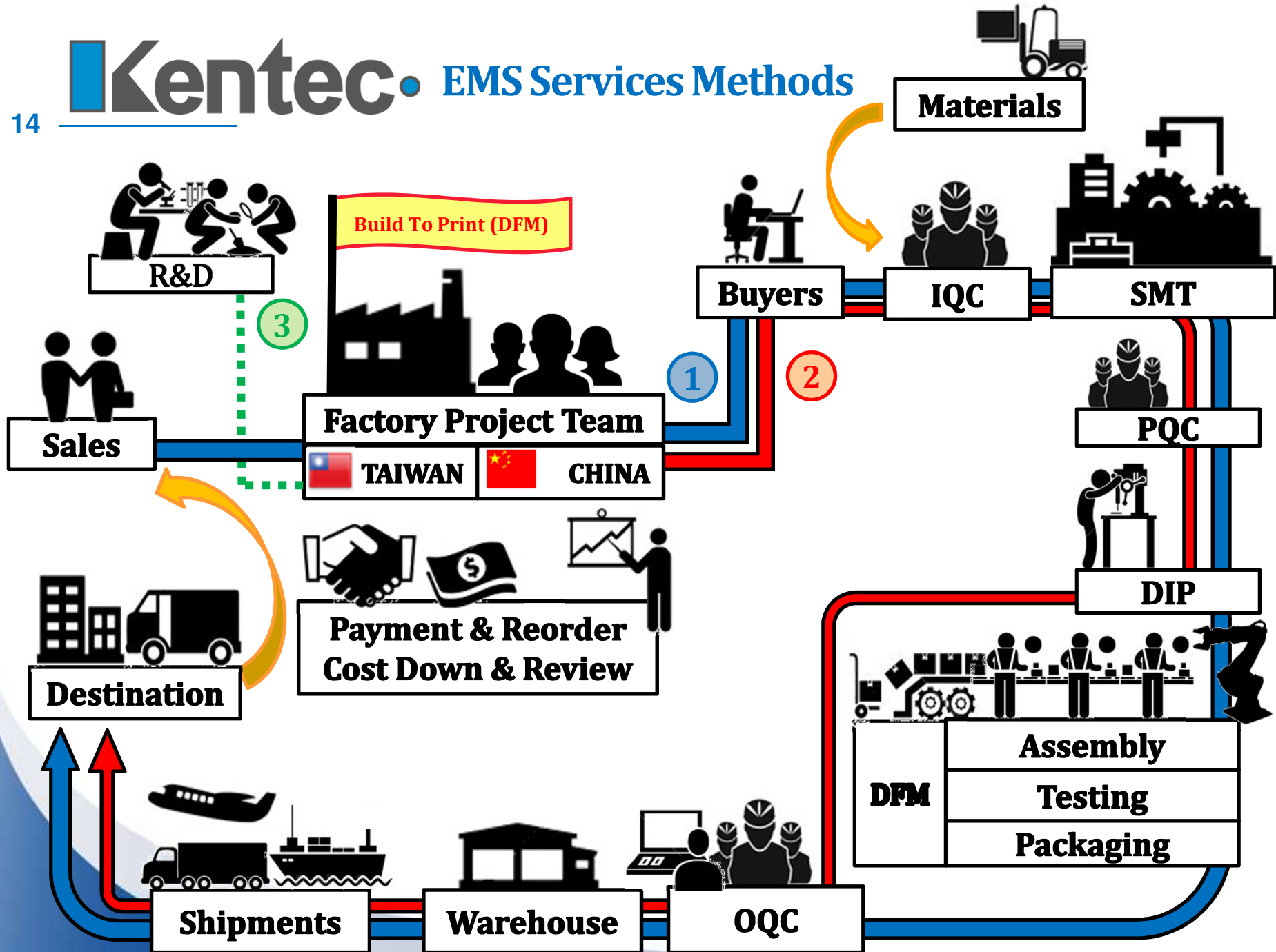
Set Top Boxes & Blue Ray Players



TECHNOLOGIES:



Kentec • EMS Services Methods





 **KENMEC GROUP**

 **Kentec** · 金運科技



THANK YOU FOR YOUR TIME.

IT'S A HONOR TO WORK WITH YOU.

Peter Hou

Sales Manager

3F, No. 97, Sec.2, Nan-Kang Rd.
Taipei, Taiwan

TEL : +886-2-2786-3717 ext 377

FAX : +886-2-2785-9213

E-mail : peterhou@kentec-inc.com

www.kentec-inc.com

KENMEC GROUP 