



Standard Equipment/Optional Equipment

Standard Equipment

Turbocharged common rail DEUTZ diesel engine, 4.0 l, 85 kW, complies to 2004/26/EC step 3B and EPA Tier 4i, with inter-cooler and automatically controlled diesel particle filter
 Or Volkswagen 3.6 l LPG engine with 3-way catalytic converter and 2 gas cylinders with 115 l volume on a pivoted console
 Precise response twin drive pedals to control forward/reverse travel and hydrostatic braking
 Linde Load Control integrated in armrest
 Hydraulically cushioned and suspended comfort-class seat with extensive range of adjustment
 Adjustable-angle steering wheel
 Low effort, responsive and virtually play-free hydrostatic steering
 High safety and stability thanks to Linde Torsion Support and top mounted tilt cylinders
 Variable displacement pumps for driving and lifting to reduce fuel consumption
 High performance hydraulic filter concept, preserves maximum oil purity and extends life of all hydraulic components

Optional Equipment

Standard masts
 3,550 to 8,850 mm lift (H 50, H 60)
 3,150 to 8,850 mm lift (H 70, H 80)
 2,750 to 8,850 mm lift (H 80/900, H 80/1100)
 Triplex masts (full free lift) up to 8,555 mm
 Several load backrests
 Several fork carriages
 Several fork lengths
 One, two or three additional hydraulic circuits for all mast types
 Overhead guard can be upgraded to full cabine with roof, front and rear screens and doors
 Wiper and washers for front, rear and roof screens
 Roof blind, clipboard, additional interior lighting, height-adjusting steering column
 Seats providing additional comfort (lumbar support, seat heater and cooling, air suspension) and adjustments

Glare-free display including fuel gauge, hour meter, service and regeneration information
 Linde Engine Protection System with monitoring, alert and maybe creep rate when engine oil level, oil pressure, coolant level and temperature, hydraulic oil temperature and air cleaner vacuum are exceeded or gone below a limit or water is in the fuel filter
 Plenty of storage space
 Interior light, 12 V socket
 Superelastic tyres
 Standard mast h3 = 3,550 mm (H 50, H 60)
 Standard mast h3 = 3,150 mm (H 70, H 80)
 Standard mast h3 = 2,750 mm (H 80/900, H 80/1100)
 Fork carriage width b3 = 1,800 mm (H 50, H 60, H 70)
 Fork carriage width b3 = 2,180 mm (H 80, H 80/900)
 Fork carriage width b3 = 2,400 mm (H 80/1100)
 Fork length l = 1,200 mm (H 50 - H 80)
 Fork length l = 1,800 mm (H 80/900)
 Fork length l = 2,200 mm (H 80/1100)

Single drive pedal with direction selector positioned on armrest
 Swivelling seat 17°
 Cab heater with integral pollen filter
 Air conditioning
 Radio with CD/MP3/Front Aux-In and speakers
 Truck lighting, working lights
 Audible reversing alarm, flashing beacon and rotating beacon
 RTA (Road Traffic Association)
 Several Mirrors
 Alternative tyres
 LFM (Linde Fleet Management)
 Custom paintwork
 Foundry version

Other options available on request



Diesel and LPG Forklift Trucks
 Capacity 5000 - 8000 kg
 H 50, H 60, H 70, H 80
 H 80/900, H 80/1100

Series 396

Linde Material Handling



Safety

With loads weighing up to 8000 kg, safe and precise load handling is ensured by the unique Linde Torsion Support. Up to 30% less mast distortion can be realised. An enormous advantage, even on higher lift heights. This unique design also enables slimmer mast profiles to be fitted for outstanding visibility.

Performance

A truck designed to take care of the really tough applications. Advanced drive technology with powerful diesel and LPG engines combined with the original Linde Load Control enables the operator to use the truck's vast potential to perform every day, shift by shift.

Comfort

Step in relaxed, leave again relaxed. Linde brings to this forklift a generously sized automobile-class workspace. A perfect interface between operator and truck has been achieved with the Linde ergonomic design concept. The spacious cab, comfort-class seat with adjustable armrest and intuitive controls allow fast and stress-free working.

Reliability

50 years of continuous optimisation of the original Linde hydraulic system are combined with robust industrial engines. The result is absolute reliability. The power unit with two maintenance-free displacement pumps for driving and lifting is designed for ease of operation in the most arduous tasks.

Productivity

Effective and cost-efficient at work: The original Linde hydrostatic transmission works without gearshift, clutch, differential and drum brakes. As a result, uptime is optimised, and maintenance costs are low. The three-way isolation of the operator's compartment, chassis and engine significantly reduces oscillation and vibration to maximise productivity.

Features

Original Linde hydrostatic drive
 → Responsive, smooth and precise driving
 → No clutch, differential or drum brakes; the hydrostatic drive assumes function of service brake
 → Robust drive system, well proven in the most arduous applications
 → Low maintenance costs and long life

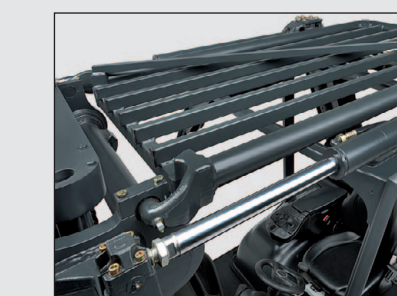
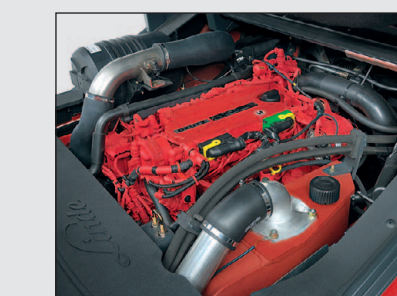
Linde clear-view mast
 → Superb visibility
 → Full rated capacity up to maximum lift height
 → Exceptional residual capacity



Linde twin accelerator pedals
 → Rapid change of forward/reverse direction without moving feet from pedals
 → Short pedal stroke
 → No leg strain or fatigue
 → Increased productivity

Linde Load Control
 → Accurate, safe load handling
 → Effortless fingertip control of all mast functions
 → High dependability resulting from duplicated monitoring systems
 → Traction and lift functions completely separate

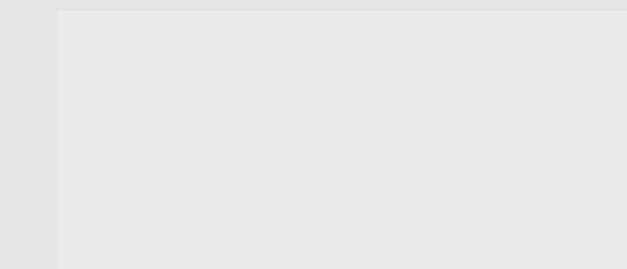
Linde Truck Control
 → Advanced electronic engine controller
 → Hydraulically controlled axial-displacement pump and -motors
 → Automatic control of engine speed determined by load carried
 → Enclosed in sealed module to protect from dust and dirt



Linde operator compartment
 → Advanced functional design for optimum operator comfort and efficiency
 → Superb cab with spacious leg and headroom
 → Excellent visibility of load and surroundings due to slim-line mast sections and increased cabin width
 → Quiet, stress-free working

High-economy engine technology
 → Industrial DEUTZ Diesel engine complies to 2004/26/EC step 3B and EPA Tier 4i
 → Or Volkswagen LPG engine incorporating most advanced technology
 → High torque
 → Low fuel consumption
 → Low engine-out emissions

Linde Torsion Support
 → The Linde Torsion Support system absorbs and minimises the stresses on the mast and chassis caused by dynamic torsional forces from the load by up to 30%
 → Safer, smoother load handling and extended working life
 → The top mounted tilt jacks provide the optimum leverage for outstanding mast control and handling stability of heavy loads



Linde Material Handling GmbH, Postfach 10 01 36, 63701 Aschaffenburg, Germany
 Phone +49.6021.99-0, Fax +49.6021.99-1570, www.linde-mh.com, info@linde-mh.com

Linde Material Handling



Subject to modification in the interests of progress. Illustrations and technical details not binding for actual constructions. All dimensions subject to usual tolerances.

Printed in Germany 754.c.3.03.12.mh.fk

Technical Data according to VDI 2198

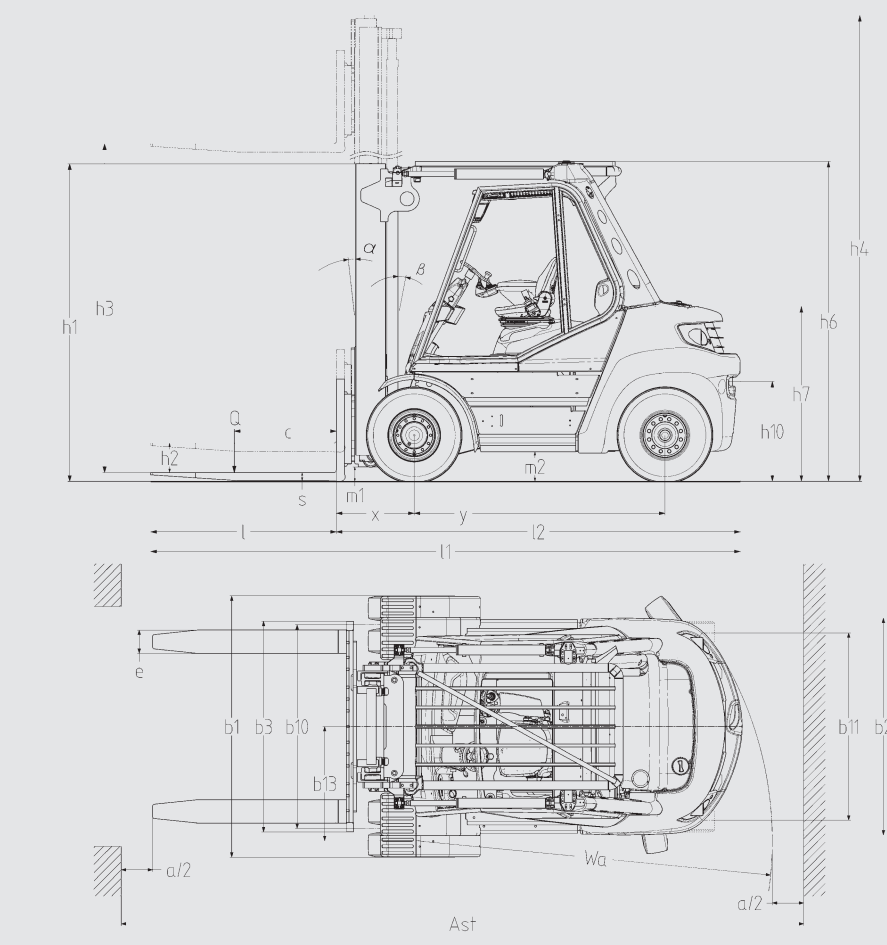
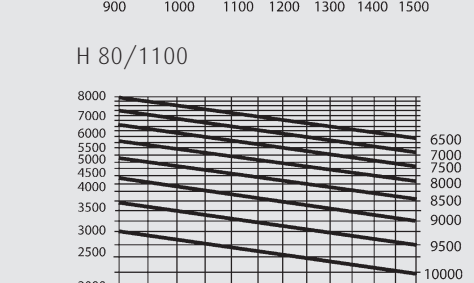
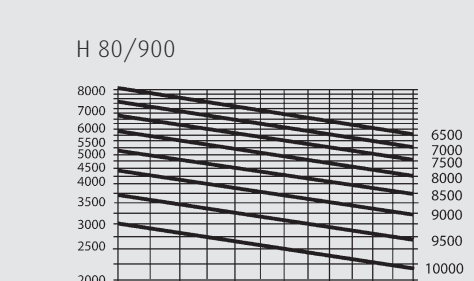
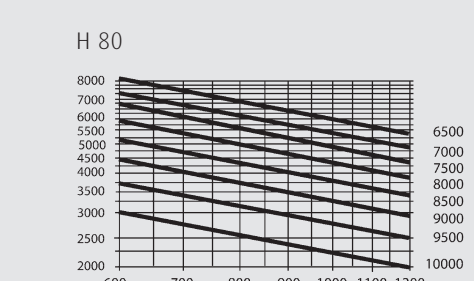
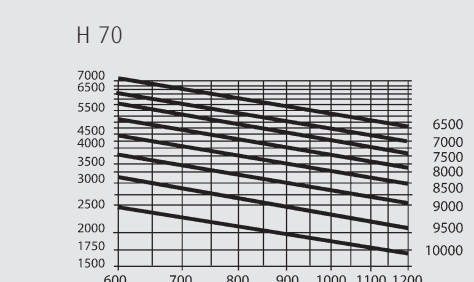
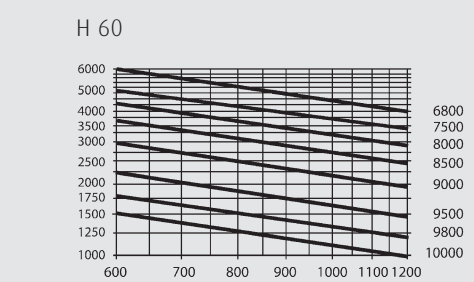
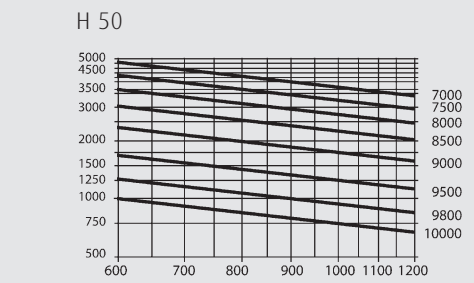
Characteristics	Linde Forklift Models																																																								
	1.1	1.2	1.3	1.4	1.5	1.6	1.8	1.9	2.1	2.2	2.3	3.1	3.2	3.3	3.4	3.5	3.6	3.7	4.1	4.2	4.3	4.4	4.5	4.7	4.8	4.12	4.19	4.20	4.21	4.22	4.23	4.24	4.31	4.32	4.33	4.34	4.35	4.36	5.1	5.2	5.3	5.4	5.5	5.7	5.9	5.10	7.1	7.2	7.3	7.4	7.5	7.5a	7.5b	8.1	8.2	8.3	8.4
Manufacturer	LINDE																																																								
Model designation	H50D H60D H70D H80D H80/900D H80/1100D H50T H60T H70T H80T H80/900T H80/1100T																																																								
Power unit	Diesel Diesel Diesel Diesel Diesel Diesel LPG LPG LPG LPG LPG LPG																																																								
Operation	Seat Seat Seat Seat Seat Seat Seat Seat Seat Seat Seat Seat Seat Seat Seat Seat																																																								
Load capacity	Q (t)	5.0 6.0 7.0 8.0 8.0 8.0 5.0 6.0 7.0 8.0 8.0 8.0 8.0																																																							
Load centre	c (mm)	600 600 600 600 900 1100 600 600 600 600 900 1100																																																							
Axle centre to fork face	x (mm)	630 630 640 640 670 670 630 630 640 640 670 670																																																							
Wheelbase	y (mm)	2160 2160 2160 2160 2510 2810 2160 2160 2160 2160 2510 2810																																																							
Service weight	(kg)	10003 10186 11400 12322 13970 14802 10049 10233 11446 12368 14017 14849																																																							
Axle load with load, front/rear	(kg)	12720 / 2283 14284 / 1902 16159 / 2241 17878 / 2444 19740 / 2230 20493 / 2309 12541 / 2508 14105 / 2128 15980 / 2466 17698 / 2670 19598 / 2419 20370 / 2479																																																							
Axle load without load, front/rear	(kg)	4873 / 5130 4867 / 5319 5140 / 6260 5285 / 7037 6736 / 7234 7454 / 7348 4694 / 5355 4688 / 5545 4961 / 6485 5105 / 7263 6594 / 7423 7331 / 7518																																																							
Tyres rubber, SE, pneumatic, polyurethane		SE SE SE twin SE twin SE twin SE twin SE SE SE SE twin SE twin SE twin SE twin																																																							
Tyre size, front		355/65-15 355/65-15 8.25-15 8.25-15 8.25-15 315/70-15 (300-15) 355/65-15 355/65-15 8.25-15 8.25-15 315/70-15 (300-15) 315/70-15 (300-15) 315/70-15 (300-15) 315/70-15 (300-15) 315/70-15 (300-15) 315/70-15 (300-15)																																																							
Tyre size, rear		8.25-15 8.25-15 8.25-15 315/70-15 (300-15) 315/70-15 (300-15) 315/70-15 (300-15) 8.25-15 8.25-15 8.25-15 315/70-15 (300-15) 315/70-15 (300-15) 315/70-15 (300-15) 315/70-15 (300-15)																																																							
Wheels, number front/rear (x = driven)		2x / 2 2x / 2 4x / 2 4x / 2 4x / 2 4x / 2 2x / 2 2x / 2 4x / 2 4x / 2 4x / 2 4x / 2 4x / 2																																																							
Track width, front	b10 (mm)	1594 1594 1742 1742 1752 1594 1594 1742 1742 1752																																																							
Track width, rear	b11 (mm)	1600 1600 1600 1550 1550 1600 1600 1600 1550 1550																																																							
Mast/fork carriage tilt, forward/backward	a/b (°)	5.0 / 9.0 5.0 / 9.0 5.0 / 9.0 5.0 / 9.0 5.0 / 9.0 5.0 / 9.0 5.0 / 9.0 5.0 / 9.0 5.0 / 9.0 5.0 / 9.0 5.0 / 9.0 5.0 / 9.0 5.0 / 9.0																																																							
Height of mast, lowered	h1 (mm)	2735 ¹⁾ 2735 ¹⁾ 2737 ¹⁾ 2737 ¹⁾ 2735 ¹⁾ 2737 ¹⁾ 2735 ¹⁾ 2735 ¹⁾ 2738 ¹⁾ 2737 ¹⁾ 2735 ¹⁾ 2735 ¹⁾ 2737 ¹⁾																																																							
Free lift	h2 (mm)	150 150 150 150 150 150 150 150 150 150 150 150 150 150																																																							
Lift	h3 (mm)	3550 ²⁾ 3550 ²⁾ 3150 ²⁾ 3150 ²⁾ 2750 ²⁾ 2750 ²⁾ 3550 ²⁾ 3550 ²⁾ 3150 ²⁾ 3150 ²⁾ 2750 ²⁾ 2750 ²⁾ 2750 ²⁾																																																							
Height of mast, extended	h4 (mm)	4448 4448 4245 4244 4144 4146 4448 4448 4245 4244 4144 4146 4146 4146																																																							
Height of overhead guard (cabin)	h6 (mm)	2746 2746 2745 2746 2746 2747 2746 2746 2745 2746 2746 2746 2747 2747																																																							
Height of seat/stand-on platform	h7 (mm)	1503 1503 1503 1504 1503 1505 1503 1503 1503 1504 1503 1503 1505 1505																																																							
Towing coupling height	h10 (mm)	847 846 841 845 845 844 847 846 841 845 845 844 844																																																							
Overall length	l1 (mm)	4639 4639 4649 4649 5629 6329 4639 4639 4649 4649 5629 6329																																																							
Length to fork face	l2 (mm)	3439 3439 3449 3449 3829 4129 3439 3439 3449 3449 3829 4129																																																							
Overall width	b1/b2 (mm)	1900 / 1870 ³⁾ 1900 / 1870 ³⁾ 2232 / 1870 ³⁾ 2232 / 1870 ³⁾ 2232 / 1870 ³⁾ 2305 / 1870 ³⁾ 1900 / 1870 ³⁾ 1900 / 1870 ³⁾ 2232 / 1870 ³⁾ 2232 / 1870 ³⁾ 2232 / 1870 ³⁾ 2305 / 1870 ³⁾																																																							
Fork dimensions	s/e/l (mm)	60 x 130 x 1200 60 x 130 x 1200 70 x 150 x 1200 70 x 150 x 1200 70 x 200 x 1800 70 x 200 x 2200 60 x 130 x 1200 60 x 130 x 1200 70 x 150 x 1200 70 x 150 x 1200 70 x 200 x 1800 70 x 200 x 2200																																																							
Fork carriage to ISO 2328, class/type A, B		4A 4A 4A 4A 4A 4A 4A 4A 4A 4A 4A 4A 4A 4A																																																							
Width of fork carriage	b3 (mm)	1800 1800 1800 2180 2180 2400 1800 1800 2180 2180 2400																																																							
Ground clearance, below mast	m1 (mm)	207 204 207 204 201 208 207 204 207 204 201 208																																																							
Ground clearance, centre of wheelbase	m2 (mm)	247 247 246 245 246 247 246 246 245 246 246 246 247 247																																																							
Aisle width with pallet 1000 x 1200 across forks	Ast (mm)	4890 ⁴⁾ 4890 ⁴⁾ 4900 ⁴⁾ 4900 ⁴⁾ 5215 ⁴⁾ 5505 ⁴⁾ 4890 ⁴⁾ 4890 ⁴⁾ 4900 ⁴⁾ 4900 ⁴⁾ 5215 ⁴⁾ 5505 ⁴⁾																																																							
Aisle width with pallet 800 x 1200 along forks	Ast (mm)	5090 ⁴⁾ 5090 ⁴⁾ 5100 ⁴⁾ 5100 ⁴⁾ 5415 ⁴⁾ 5705 ⁴⁾ 5090 ⁴⁾ 5090 ⁴⁾ 5100 ⁴⁾ 5100 ⁴⁾ 5415 ⁴⁾ 5705 ⁴⁾																																																							
Turning radius	Wa (mm)	3060 3060 3060 3060 3345 3635 3060 3060 3060 3060 3345 3635																																																							
Minimum pivoting point distance	b13 (mm)	975 975 975 975 975 975 975 975 975 975 975 975 975 975																																																							
Travel speed, with/without load	(km/h)	22 / 23 22 / 23 22 / 23 22 / 23 22 / 23 22 / 23 20 / 20 20 / 20 20 / 20 19 / 19 19 / 19 17 / 17																																																							
Lifting speed, with/without load	(m/s)	0.54 / 0.54 0.54 / 0.54 0.49 / 0.53 0.49 / 0.53 0.49 / 0.53 0.49 / 0.53 0.51 / 0.53 0.51 / 0.53 0.43 / 0.54 0.4 / 0.54 0.4 / 0.54 0.51 / 0.54																																																							
Lowering speed, with/without load	(m/s)	0.54 / 0.5 0.54 / 0.5 0.56 / 0.45 0.56 / 0.45 0.56 / 0.45 0.56 / 0.45 0.5 / 0.5 0.5 / 0.5 0.56 / 0.48 0.56 / 0.48 0.56 / 0.48 0.56 / 0.48																																																							
Tractive force, with/without load	(N)	35000 / 34000 38000 / 35000 45000 / 41000 50000 / 42000 51000 / 46000 54000 / 50000 35000 / 34000 38000 / 35000 45000 / 41000 50000 / 42000 51000 / 46000 54000 / 50000																																																							
Climbing ability, with/without load	(%)	26.0 / 34.0 24.0 / 34.0 24.0 / 33.0 25.0 / 36.0 24.0 / 34.0 25.0 / 34.0 26.0 / 34.0 24.0 / 34.0 24.0 / 33.0 25.0 / 36.0 24.0 / 34.0 23.0 / 33.0																																																							
Acceleration time, with/without load	(s)	5.4 / 4.8 5.6 / 5.0 5.8 / 5.2 6.0 / 5.3 6.2 / 5.4 6.3 / 5.5 5.5 / 5.1 6.0 / 5.3 6.7 / 5.8 7.2 / 6.1 7.3 / 6.2 7.8 / 6.7																																																							
Service brake		hydrostatic hydrostatic hydrostatic hydrostatic hydrostatic hydrostatic hydrostatic hydrostatic hydrostatic hydrostatic hydrostatic hydrostatic hydrostatic hydrostatic																																																							
Engine manufacturer/type		TCD4.1 L04 TCD4.1 L04 TCD4.1 L04 TCD4.1 L04 TCD4.1 L04 TCD4.1 L04 TCD4.1 L04 VW 3,6l VR6 VW 3,6l VR6 VW 3,6l VR6 VW 3,6l VR6 VW 3,6l VR6 VW 3,6l VR6																																																							
Engine performance according to ISO 1585	(kW)	85 85 85 85 85 85 72 72 72 72 72 72																																																							
Rated speed	(1/min)	2200 2200 2200 2200 2200 2200 2500 2500 2500 2500 2500 2500																																																							
Number of cylinders/displacement	(-/cm ³)	4 / 4038 4 / 4038 4 / 4038 4 / 4038 4 / 4038 4 / 4038 6 / 3597 6 / 3597 6 / 3597 6 / 3597 6 / 3597 6 / 3597																																																							
Fuel consumption according to VDI cycle	(l/h)	7.6 8.0 8.4 8.8 9.1 9.4 - - - - - -																																																							
Fuel consumption according to VDI cycle	(kg/h)	- - - - - - 7.2 7.6 8 8.4 8.8 9.3																																																							
Type of drive control		hydrost./stepl. hydrost./stepl. hydrost./stepl. hydrost./stepl. hydrost./stepl. hydrost./stepl. hydrost./stepl. hydrost./stepl. hydrost./stepl. hydrost./stepl. hydrost./stepl. hydrost./stepl. hydrost./stepl. hydrost./stepl.																																																							
Operating pressure for attachments	(bar)	265 265 265 265 265 265 265 265 265 265 265 265 265 265																																																							
Oil flow for attachments	(l/min)	95 95 95 95 95 95 95 95 95 95 95 95 95 95																																																							
Noise level at operator's ear	(dB(A))	77.0 77.0 77.0 77.0 77.0 77.0 76.0 76.0 76.0 76.0 76.0 76.0 76.0 76.0																																																							
Towing coupling, design/type, DIN 15 170		similar to form H similar to form H similar to form H similar to form H similar to form H similar to form H similar to form H similar to form H similar to form H similar to form H similar to form H similar to form H similar to form H																																																							

1) With 150 mm free lift
2) For alternative masts, refer to tables

3) front/rear
4) Including a 200 mm (min.) operating aisle clearance.

Lifting capacity diagrams

Lifting capacity diagrams valid with SE tyres



Overall and lift heights H 50, H 60 (in mm)

Lift	h3	Standard mast					Triplex mast				
		3550	4150	4550	5260	6050	4770	5820	6420	7470	8670
Overall heights, forks lowered with 150 mm freelif (Standard)	h1	2730	3030	3230	3580	3980	2770	3010	3210	3560	3960
Overall heights at max. lift with 4 rollers fork carriage	h4	4440	5040	5440	6140	6940	5660	6710	7310	8360	9560
Overall heights at max. lift with 6/8 rollers fork carriage	h4	4640	5240	5640	6340	7140	5860	6910	7510	8560	9760

Overall and lift heights H 70, H 80 (in mm)

Lift	h3	Standard mast					Triplex mast				
		3150	3750	4150	4850	5650	4705	5605	6205	7255	8455
Overall heights, forks lowered with 150 mm freelif (Standard)	h1	2730	3030	3230	3580	3980	2710	3010	3210	3560	3960
Overall heights at max. lift with 4 rollers fork carriage	h4	4240	4840	5240	5940	6740	5795	6695	7295	8345	9545
Overall heights at max. lift with 8 rollers fork carriage	h4	4540	5140	5540	6240	7040	6095	6995	7595	8645	9845

Overall and lift heights H 80/900, H 80/1100 (in mm)

Lift	h3	Standard mast					Triplex mast				
		2750	3350	3750	4450	5250	4205	5105	5705	6755	7955
Overall heights, forks lowered with 150 mm freelif (Standard)	h1	2730	3030	3230	3580	3980	2710	3010	3210	3560	3960
Overall heights at max. lift with 8 rollers fork carriage	h4	4140	4740	5140	5840	6640	5595	6495	7095	8145	9345