



## Standard Equipment/Optional Equipment

### Standard Equipment

Linde twin drive pedals to control forward/reverse travel and braking  
 Original Linde Load Control integrated in armrest  
 Hydraulic suspended comfort-class seat with extensive range of adjustment  
 Hydrostatic steering, kickback free  
 High safety and stability ensured by Linde ProtectorFrame  
 Anti-glare display with fuel gauge, clock, hour meter and service information  
 Control lights on display for engine oil pressure, engine overheating, parking brake, audible warning signal for engine and hydraulic oil temperature, blocked intake filter and low fuel level  
 Plenty of storage space for writing utensils, beverage cans...  
 Air intake filter with integrated cyclone separator  
 High-performance hydraulic filter concept, guarantees maximum oil purity and extends life of all hydraulic components  
 LPG truck fitted with a two-way catalytic converter  
 The mounting of the gas bottle is ergonomically designed for easy changing

LPG truck fitted with accurate ultrasonic fuel level indicator for exchange bottles  
 LPG volumetric fuel tank version with fuel level indicator at the display  
 Superelastic tyres

### New STANDARD features for the Evo models:

Variable displacement pump for best energy consumption  
 Integrated diesel particulate filter for EU models with 44 kW  
 New seat/armrest generation for outstanding ergonomics  
 H25/600 replaces H25/500  
 LEPS (Linde-Engine-Protection-System) as monitoring of the most important truck parameter  
 Curve Assist for automatic speed adaption  
 Intelligent drive dynamic modi now integrate lift hydraulic  
 New development timing belt protection  
 Enhanced steering axle  
 Handhold for safe access at A-pillar  
 Energy-efficient electric fan

### Optional Equipment

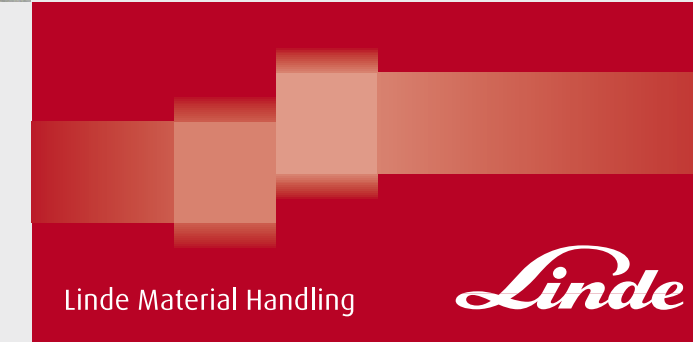
Single drive pedal with direction selector on armrest  
 Overhead guard can be upgraded to full cabine with roof, front and rear screens and doors (also available with tinted glass)  
 Wiper-washers for front, rear and roof screens  
 Further seats with additional comfort and adjustments  
 Cab heater with integrated pollen filter  
 Air Conditioning  
 Radio with CD-player and speakers  
 Sun screens, clipboard, interior lighting, height adjustable steering column  
 Standard masts from 3,150 mm to 6,550 mm lift  
 Duplex masts (full free lift) from 3,165 mm to 4,765 mm lift  
 Triplex masts (full free lift) from 4,705 mm to 6,455 mm lift  
 Integrated sideshift  
 Integrated fork positioner  
 Load backrest  
 One or two auxiliary hydraulic circuits for all mast types

Alternative fork lengths  
 Tilt cylinder- and roof protection  
 Truck lighting, working lamps  
 Audible reversing alarm, flasher and strobe beacons  
 Mirrors  
 Linde original Blue Spot  
 Camera and colour monitor  
 Road traffic specifications  
 Air precleaner  
 Oilbath air precleaner  
 Water trap with audible warning  
 Volumetric tank (LPG) with capacities of 45 l or 55 l  
 3-way catalytic converter (LPG)  
 Unregulated catalyst (Diesel)  
 CNG (natural gas) version  
 Linde Forklift Data Management  
 Custom paintwork

Other options available on request



**Diesel, LPG and CNG Forklift Trucks**  
 Capacity 2500 - 3500 kg  
 H25/600 *EVO*, H30/500 *EVO*,  
 H35/500 *EVO*



## Features

**Original Linde hydrostatic drive**  
 → Sensitive, smooth, and precise driving  
 → Variable displacement pump for best energy consumption  
 → No clutch, no differential, and no drum brakes thanks to hydrostatic direct drive  
 → Robust drive even in extreme environments



**Linde ProtectorFrame**  
 → Enclosed, robot-welded chassis for maximum durability and protection of components  
 → A hinged engine cover and removable service panels give wide, easy access for maintenance  
 → Hand grip on A-pillar for safe on/off access

**Linde twin drive pedals**  
 → Fast and smooth travel direction-changes without constantly moving feet from one pedal to the other  
 → Short pedal travel  
 → No strain on ankles or legs  
 → Operator maintains high efficiency levels

**Linde Load Control**  
 → Mini levers for all mast functions mounted on an adjustable armrest  
 → Precise and effortless fingertip control of all mast functions for safe, efficient load handling  
 → Engine rpm is automatically synchronised to precisely match hydraulic demands

**High-economy engine technology**  
 → Modern, advanced technology Diesel, LPG and CNG engines matched to Linde's demanding requirements  
 → High torque for impressive and flexible performance  
 → Extremely fuel efficient  
 → Exhaust emissions significantly below the current European limits



**Linde operator's compartment**  
 → Advanced functional design for optimum operator comfort and efficiency  
 → Superb working environment with spacious leg and headroom  
 → Excellent visibility of load and surrounding environment through the slim-line mast sections  
 → Resilient mounting of mast and drive axle absorbs road shocks and vibrations  
 → Quiet, stress-free working



**Variable displacement pump**  
 → For mast functions and additional hydraulic circuits  
 → Electrically controlled by Linde Load Control levers  
 → The Linde pump only provides the required oil volume  
 → Less fuel consumption  
 → Less noise  
 → Extended oil change intervals



**Linde clear-view mast**  
 → Superb visibility through the slim profile mast sections  
 → Full load capacity available up to maximum lift height  
 → Excellent residual capacities  
 → Maintenance-free resilient rubber mounting of mast/drive axle and tilt jacks  
 → Electronic control of tilt angle  
 → Electronic cushioning of end travel for forward/back tilt

### Safety

Linde ProtectorFrame: The protective overhead guard and its supporting frame together form a strong protective zone providing optimum safety and protection for the operator. Top-mounted tilt cylinders provide seamless and smooth control of the tilt movements for excellent load stability in all operating conditions. This unique design also enables slimmer mast profiles to be fitted for outstanding visibility.

### Performance

Low consumption and exhaust level and nevertheless this truck range continues to impress with its excellent performance. Advanced engine and drive technology combined with the original Linde Load Control system enables the operator to use the trucks vast potential to maximise productivity. Precise fingertip control of all mast functions.

### Comfort

Step in relaxed, leave again relaxed. Linde brings to this forklift a generously sized automobile-class workspace. A perfect interface between operator and truck has been achieved with the Linde ergonomic design concept. The spacious cab, comfort-class seat with adjustable armrest and intuitive controls allow fast and stress-free working.

### Reliability

Proven in tough applications. Decoupling of mast and drive axle with chassis and cabine results in reduced shock and vibration. The enclosed robot-welded chassis is designed for maximum strength and durability. The resilient, maintenance-free mountings of the axles and tilt jacks cut downtime and operating costs.

### Productivity

50 years of permanent optimisation of the original Linde hydraulic system leads to effective and cost-efficient work: The original Linde hydrostatic transmission requires no differential, no drum brake, no gearshift and no clutch. As a result, uptime is optimised, productivity is increased and maintenance costs are low.

Picture top: Beverage application  
 Picture middle: Beverage version  
 Picture bottom: CNG version

Linde Material Handling GmbH, Postfach 10 01 36, 63701 Aschaffenburg, Germany  
 Phone +49.60 21.99-0, Fax +49.60 21.99-15 70, www.linde-mh.com, info@linde-mh.com



Subject to modification in the interest of progress. Illustrations and technical details could include options and not binding for actual constructions. All dimensions subject to usual tolerances.

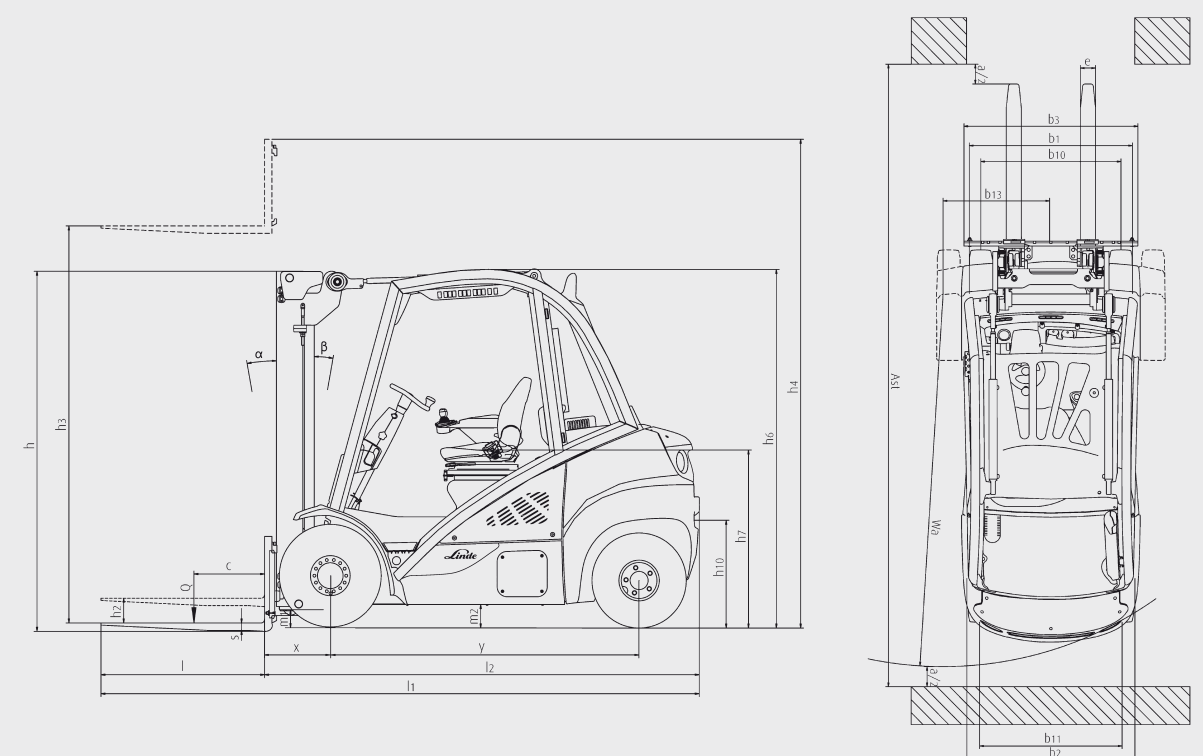
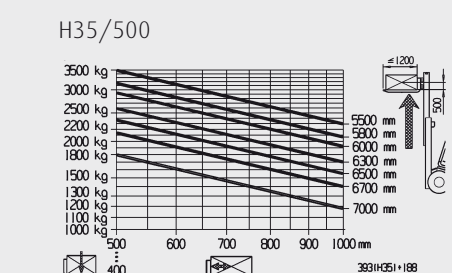
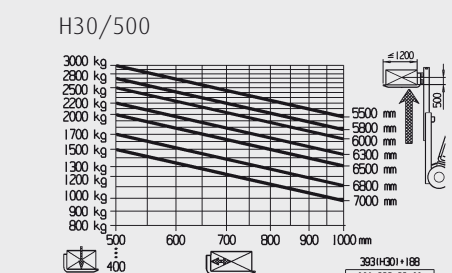
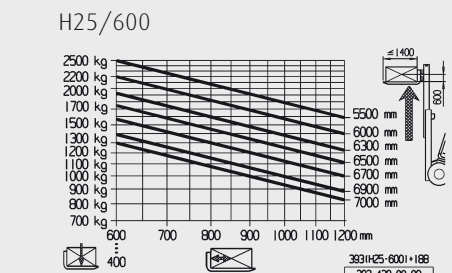


# Technical Data according to VDI 2198

Characteristics	Linde Forklift Models																																																							
	1.1	1.2	1.2a	1.3	1.4	1.5	1.6	1.8	1.9	2.1	2.2	2.3	3.1	3.2	3.3	3.5	3.6	3.7	4.1	4.2	4.3	4.4	4.5	4.7	4.8	4.12	4.19	4.20	4.21	4.22	4.23	4.24	4.31	4.32	4.33	4.34	4.35	4.36	5.1	5.2	5.3	5.5	5.7	5.9	5.10	7.1	7.2	7.3	7.4	7.5	7.5a	7.5b	8.1	8.2	8.3	8.4
Manufacturer	LINDE																																																							
Model designation	H25/600D H30D H35D H25/600T H30T H35T H25/600 CNG H30 CNG H25/600D Raised Cab <sup>1)</sup> H30D Raised Cab <sup>1)</sup> H35D Raised Cab <sup>1)</sup>																																																							
Series	393-02																																																							
Power unit	Diesel Diesel Diesel LPG LPG LPG CNG CNG Diesel Diesel Diesel																																																							
Operation	Seat Seat Seat Seat Seat Seat Seat Seat Seat Seat Seat Seat																																																							
Load capacity	Q (t)	2.5 3.0 3.5 2.5 3.0 3.5 2.5 3.0 2.5 3.0 2.5 3.0 3.5																																																						
Load centre	c (mm)	600 500 500 600 500 500 600 500 600 500 600 500 500																																																						
Axle centre to fork face	x (mm)	442 445 450 442 445 450 442 445 442 445 442 445 450																																																						
Wheelbase	y (mm)	1905 1930 1965 1905 1930 1965 1905 1930 1905 1930 1905 1930 1965																																																						
Service weight	(kg)	4090 4220 4680 4070 4200 4665 4090 4200 4270 4400 4860																																																						
Axle load with load, front/rear	(kg)	5797 / 793 6419 / 801 7242 / 938 5757 / 813 6379 / 821 7207 / 958 5797 / 793 6379 / 821 5907 / 863 6529 / 871 7352 / 1008																																																						
Axle load without load, front/rear	(kg)	1930 / 2160 1950 / 2270 2050 / 2630 1890 / 2180 1910 / 2290 2015 / 2650 1930 / 2160 1910 / 2290 2040 / 2230 2060 / 2340 2160 / 2700																																																						
Tyres rubber, SE, pneumatic, polyurethane		SE <sup>2)</sup> SE <sup>2)</sup> SE <sup>2)</sup> SE <sup>2)</sup> SE <sup>2)</sup> SE <sup>2)</sup> SE <sup>2)</sup> SE <sup>2)</sup> SE <sup>2)</sup> SE <sup>2)</sup> SE <sup>2)</sup> SE <sup>2)</sup> SE <sup>2)</sup>																																																						
Tyre size, front		250/75-12 <sup>3)</sup> 250/75-12 <sup>3)</sup> 250/75-12 <sup>3)</sup> 250/75-12 <sup>3)</sup> 250/75-12 <sup>3)</sup> 250/75-12 <sup>3)</sup> 250/75-12 <sup>3)</sup> 250/75-12 <sup>3)</sup> 250/75-12 <sup>3)</sup> 250/75-12 <sup>3)</sup> 250/75-12 <sup>3)</sup> 250/75-12 <sup>3)</sup>																																																						
Tyre size, rear		225/75-10 (23x9-10) 225/75-10 (23x9-10) 225/75-10 (23x9-10) 225/75-10 (23x9-10) 225/75-10 (23x9-10) 225/75-10 (23x9-10) 225/75-10 (23x9-10) 225/75-10 (23x9-10) 225/75-10 (23x9-10) 225/75-10 (23x9-10) 225/75-10 (23x9-10) 225/75-10 (23x9-10) 225/75-10 (23x9-10)																																																						
Wheels, number front/rear (x = driven)		2x (4x) / 2 <sup>4)</sup> 2x (4x) / 2 <sup>4)</sup> 2x (4x) / 2 <sup>4)</sup> 2x (4x) / 2 <sup>4)</sup> 2x (4x) / 2 <sup>4)</sup> 2x (4x) / 2 <sup>4)</sup> 2x (4x) / 2 <sup>4)</sup> 2x (4x) / 2 <sup>4)</sup> 2x (4x) / 2 <sup>4)</sup> 2x (4x) / 2 <sup>4)</sup> 2x (4x) / 2 <sup>4)</sup> 2x (4x) / 2 <sup>4)</sup>																																																						
Track width, front	b10 (mm)	1008 1008 1008 1008 1008 1008 1008 1008 1008 1008 1008 1008 1008																																																						
Track width, rear	b11 (mm)	932 932 932 932 932 932 932 932 932 932 932 932 932																																																						
Mast/fork carriage tilt, forward/backward	a/b (°)	5.0 / 8.0 5.0 / 8.0 5.0 / 8.0 5.0 / 8.0 5.0 / 8.0 5.0 / 8.0 5.0 / 8.0 5.0 / 8.0 5.0 / 8.0 5.0 / 8.0 5.0 / 8.0 5.0 / 8.0																																																						
Height of mast, lowered	h1 (mm)	2264 2264 2264 2264 2264 2264 2264 2264 2264 2264 2264 2264 2264																																																						
Free lift	h2 (mm)	150 150 150 150 150 150 150 150 150 150 150 150 150																																																						
Lift	h3 (mm)	3050 3050 3050 3050 3050 3050 3050 3050 3050 3050 3050 3050 3050																																																						
Height of mast, extended	h4 (mm)	3840 3840 3840 3840 3840 3840 3840 3840 3840 3840 3840 3840 3840																																																						
Height of overhead guard (cabin)	h6 (mm)	2210 2210 2210 2210 2210 2210 2210 2210 2210 2210 2210 2210 2210																																																						
Height of seat/stand-on platform	h7 (mm)	1105 1105 1105 1105 1105 1105 1105 1105 1105 1105 1105 1105 1105																																																						
Towing coupling height	h10 (mm)	698 698 698 698 698 698 698 698 698 698 698 698 698																																																						
Overall length	l1 (mm)	3724 3755 3795 3724 3755 3795 3724 3755 3795 3724 3755 3795 3724																																																						
Length to fork face	l2 (mm)	2724 2755 2795 2724 2755 2795 2724 2755 2795 2724 2755 2795 2724																																																						
Overall width	b1/b2 (mm)	1256 <sup>3)</sup> 1256 <sup>3)</sup> 1256 <sup>3)</sup> 1256 <sup>3)</sup> 1256 <sup>3)</sup> 1256 <sup>3)</sup> 1256 <sup>3)</sup> 1256 <sup>3)</sup> 1256 <sup>3)</sup> 1256 <sup>3)</sup> 1256 <sup>3)</sup> 1256 <sup>3)</sup>																																																						
Fork dimensions	s/e/l (mm)	45 x 100 x 1000 45 x 100 x 1000 50 x 120 x 1000 45 x 100 x 1000 45 x 100 x 1000 50 x 120 x 1000 45 x 100 x 1000 45 x 100 x 1000 45 x 100 x 1000 45 x 100 x 1000 45 x 100 x 1000 45 x 100 x 1000 50 x 120 x 1000																																																						
Fork carriage to ISO 2328, class/type A, B		2A 3A 3A 2A 3A 3A 2A 3A 2A 3A 2A 3A 2A																																																						
Width of fork carriage	b3 (mm)	1150 <sup>4)</sup> 1150 <sup>4)</sup> 1150 <sup>4)</sup> 1150 <sup>4)</sup> 1150 <sup>4)</sup> 1150 <sup>4)</sup> 1150 <sup>4)</sup> 1150 <sup>4)</sup> 1150 <sup>4)</sup> 1150 <sup>4)</sup> 1150 <sup>4)</sup> 1150 <sup>4)</sup>																																																						
Ground clearance, below mast	m1 (mm)	119 119 117 119 119 117 119 119 119 119 119 119 119																																																						
Ground clearance, centre of wheelbase	m2 (mm)	173 173 172 173 173 172 173 173 173 173 173 173 173																																																						
Aisle width with pallet 1000 x 1200 across forks	Ast (mm)	4062 <sup>7)</sup> 4089 <sup>7)</sup> 4126 <sup>7)</sup> 4062 <sup>7)</sup> 4089 <sup>7)</sup> 4126 <sup>7)</sup> 4062 <sup>7)</sup> 4089 <sup>7)</sup> 4126 <sup>7)</sup> 4062 <sup>7)</sup> 4089 <sup>7)</sup> 4126 <sup>7)</sup>																																																						
Aisle width with pallet 800 x 1200 along forks	Ast (mm)	4262 <sup>7)</sup> 4289 <sup>7)</sup> 4326 <sup>7)</sup> 4262 <sup>7)</sup> 4289 <sup>7)</sup> 4326 <sup>7)</sup> 4262 <sup>7)</sup> 4289 <sup>7)</sup> 4326 <sup>7)</sup> 4262 <sup>7)</sup> 4289 <sup>7)</sup> 4326 <sup>7)</sup>																																																						
Turning radius	Wa (mm)	2420 2444 2476 2420 2444 2476 2420 2444 2476 2420 2444 2476 2420																																																						
Minimum pivoting point distance	b13 (mm)	580 580 580 580 580 580 580 580 580 580 580 580 580																																																						
Travel speed, with/without load	(km/h)	22 / 22 22 / 22 22 / 22 22 / 22 22 / 22 22 / 22 22 / 22 22 / 22 22 / 22 22 / 22 22 / 22 22 / 22																																																						
Lifting speed, with/without load	(m/s)	0.53 / 0.55 0.53 / 0.55 0.53 / 0.55 0.53 / 0.55 0.53 / 0.55 0.51 / 0.55 0.53 / 0.55 0.53 / 0.55 0.53 / 0.55 0.53 / 0.55 0.53 / 0.55 0.53 / 0.55																																																						
Lowering speed, with/without load	(m/s)	0.54 / 0.52 0.54 / 0.52 0.54 / 0.52 0.54 / 0.52 0.54 / 0.52 0.54 / 0.52 0.54 / 0.52 0.54 / 0.52 0.54 / 0.52 0.54 / 0.52 0.54 / 0.52 0.54 / 0.52																																																						
Tractive force, with/without load	(N)	19790 / 15150 19790 / 15300 19790 / 16090 20030 / 15150 19790 / 14990 19790 / 15810 20030 / 15150 19790 / 14990 19790 / 15150 19790 / 15300 19790 / 16090 19790 / 16090																																																						
Climbing ability, with/without load	(%)	32.0 / 33.0 27.0 / 30.0 24.0 / 28.0 32.0 / 33.0 27.0 / 30.0 23.0 / 28.0 32.0 / 33.0 27.0 / 30.0 31.0 / 31.0 27.0 / 31.0 23.0 / 29.0 23.0 / 29.0																																																						
Acceleration time, with/without load	(s)	5.1 / 4.5 5.3 / 4.6 5.6 / 4.7 5.7 / 4.8 5.8 / 4.9 5.8 / 4.9 5.9 / 5.0 5.1 / 4.5 5.3 / 4.6 5.6 / 4.7 5.7 / 4.8 5.8 / 4.9																																																						
Service brake		hydrostatic hydrostatic hydrostatic hydrostatic hydrostatic hydrostatic hydrostatic hydrostatic hydrostatic hydrostatic hydrostatic hydrostatic hydrostatic																																																						
Engine manufacturer/type		VW CPYB VW CPYB VW CPYB VW BEF VW BEF VW BEF VW BEF VW BEF VW BEF VW BEF VW BEF VW BEF VW BEF VW BEF																																																						
Engine performance according to ISO 1585	(kW)	44 44 44 39 39 39 37 37 37 44 44 44 44																																																						
Rated speed	(1/min)	2700 2700 2700 2600 2600 2600 2600 2600 2600 2700 2700 2700 2700																																																						
Number of cylinders/displacement	(-/cm <sup>3</sup> )	4 / 1968 4 / 1968 4 / 1968 4 / 1984 4 / 1984 4 / 1984 4 / 1984 4 / 1984 4 / 1968 4 / 1968 4 / 1968 4 / 1968																																																						
Fuel consumption according to VDI cycle	(l/h)	3.0 3.2 3.4 - - - 3.0 3.2 3.4 - - - 3.0 3.2 3.4																																																						
Fuel consumption according to VDI cycle	(kg/h)	- - - 2.5 2.6 2.8 - - - - - - - - -																																																						
Fuel consumption according to VDI cycle	(m <sup>3</sup> /h)	- - - - 3.5 (H); 3.8 (L) <sup>5)</sup> 3.7 (H); 4.0 (L) <sup>5)</sup> - - - - - - -																																																						
Type of drive control		LTC LTC LTC LTC LTC LTC LTC LTC LTC LTC LTC LTC LTC LTC																																																						
Operating pressure for attachments	(bar)	170 170 170 170 170 170 170 170 170 170 170 170 170																																																						
Oil flow for attachments	(l/min)	38 38 38 38 38 38 38 38 38 38 38 38 38																																																						
Noise level at operator's ear	(dB(A))	77 77 77 77 77 77 77 77 77 77 77 77 77																																																						
Towing coupling, design/type, DIN 15 170		similar to form H similar to form H similar to form H similar to form H similar to form H similar to form H similar to form H similar to form H similar to form H similar to form H similar to form H similar to form H similar to form H																																																						

1) Technical specifications for LPG version upon request  
 2) Alternative pneumatic tyres  
 3) 27x10-12, alternative pneumatic tyres, twin tyres 7.00-12 or SE 28x12,5-15  
 4) Figures in parenthesis refer to twin front tyres.  
 5) With SE twin tyres = 1611 mm  
 6) Alternative with SE twin tyres = 1600 mm  
 7) Including a 200 mm (min.) operating aisle clearance.  
 8) (H)= high quality, (L)= low quality

## Lifting capacity diagrams



Overall height and lift heights, Standard (in mm)							
Height of Mast, lowered	<b>h1</b>	2264	2414	2564	2714	2964	3214
Free lift	<b>h2</b>	150	150	150	150	150	150
Lift	<b>h3</b>	3050	3350	3650	3950	4450	4950
Height of Mast, extended	<b>h4</b>	3840	4140	4440	4740	5240	5740
Overall height and lift heights, Duplex (in mm)							
Height of Mast, lowered	<b>h1</b>	2190	2490	2640	-	-	-
Free lift	<b>h2</b>	1424	1724	1874	-	-	-
Lift	<b>h3</b>	3115	3715	4015	-	-	-
Height of Mast, extended	<b>h4</b>	3905	4505	4805	-	-	-
Overall height and lift heights, Triplex (in mm)							
Height of Mast, lowered	<b>h1</b>	2191	2241	2491	2641	2841	-
Free lift	<b>h2</b>	1424	1474	1724	1874	2074	-
Lift	<b>h3</b>	4655	4805	5505	5955	6455	-
Height of Mast, extended	<b>h4</b>	5445	5595	6295	6745	7245	-

Alternative lift heights available on request.