



Pictures top: Container version
 Pictures middle: Beverage version
 Pictures bottom: Container version, CNG version, Beverage version

Standard Equipment/Optional Equipment

Standard Equipment

Linde twin drive pedals to control forward/reverse travel and braking
 Original Linde Load Control integrated in armrest
 Hydraulic suspended comfort-class seat with extensive range of adjustment
 Hydrostatic steering, kickback free
 High safety and stability ensured by Linde ProtectorFrame
 Anti-glare display with fuel gauge, clock, hour meter and service information
 Control lights on display for engine oil pressure, engine overheating, parking brake, audible warning signal for engine and hydraulic oil temperature, blocked intake filter and low fuel level
 Plenty of storage space for writing utensils, beverage cans...
 Air intake filter with integrated cyclone separator
 High-performance hydraulic filter concept, guarantees maximum oil purity and extends life of all hydraulic components
 LPG truck fitted with a two-way catalytic converter
 The mounting of the gas bottle is ergonomically designed for easy changing

Optional Equipment

Single drive pedal with direction selector on armrest
 Overhead guard can be upgraded to full cabine with roof, front and rear screens and doors (also available with tinted glass)
 Wiper-washers for front, rear and roof screens
 Further seats with additional comfort and adjustments
 Cab heater with integrated pollen filter
 Air Conditioning
 Radio with CD-player and speakers
 Sun screens, clipboard, interior lighting, height adjustable steering column
 Standard masts from 3,150 mm to 6,550 mm lift
 Duplex masts (full free lift) from 3,165 mm to 4,765 mm lift
 Triplex masts (full free lift) from 4,705 mm to 6,455 mm lift
 Integrated sideshift
 Integrated fork positioner
 Load backrest
 One or two auxiliary hydraulic circuits for all mast types

LPG truck fitted with accurate ultrasonic fuel level indicator for exchange bottles
 LPG volumetric fuel tank version with fuel level indicator at the display
 Superelastic tyres

New STANDARD features for the Evo models:

Variable displacement pump for best energy consumption
 Integrated diesel particulate filter for EU models with 55 kW
 New seat/armrest generation for outstanding ergonomics
 LEPS (Linde-Engine-Protection-System) as monitoring of motor oil pressure and level, temperature and level of the cooling water and temperature of the hydraulic oil
 Curve Assist for automatic speed adaption
 Intelligent drive dynamic modi now integrate lift hydraulic
 New development timing belt protection
 Enhanced steering axle
 Handhold for safe access at A-pillar

Alternative fork lengths
 Tilt cylinder- and roof protection
 Truck lighting, working lamps
 Audible reversing alarm, flasher and strobe beacons
 Mirrors
 Linde original Blue Spot
 Camera and colour monitor
 Road traffic specifications
 Air precleaner
 Oilbath air precleaner
 Water trap with audible warning
 Volumetric tank (LPG) with capacities of 45 l or 55 l
 3-way catalytic converter (LPG)
 Unregulated catalyst (Diesel)
 CNG (natural gas) version
 Linde Forklift Data Management
 Custom paintwork

Other options available on request



Diesel, LPG and CNG Forklift Trucks
 Capacity 4000 - 5000 kg
 H40/500 *EVO*, H45/500 *EVO*,
 H50/500 *EVO*, H50/600 *EVO* ^{394_02}



Safety

Linde ProtectorFrame: The protective overhead guard and its supporting frame together form a strong protective zone providing optimum safety and protection for the operator. Top-mounted tilt cylinders provide seamless and smooth control of the tilt movements for excellent load stability in all operating conditions. This unique design also enables slimmer mast profiles to be fitted for outstanding visibility.

Performance

Low consumption and exhaust level and nevertheless this truck range continues to impress with its excellent performance. Advanced engine and drive technology combined with the original Linde Load Control system enables the operator to use the trucks vast potential to maximise productivity. Precise fingertip control of all mast functions.

Comfort

Step in relaxed, leave again relaxed. Linde brings to this forklift a generously sized automobile-class workspace. A perfect interface between operator and truck has been achieved with the Linde ergonomic design concept. The spacious cab, comfort-class seat with adjustable armrest and intuitive controls allow fast and stress-free working.

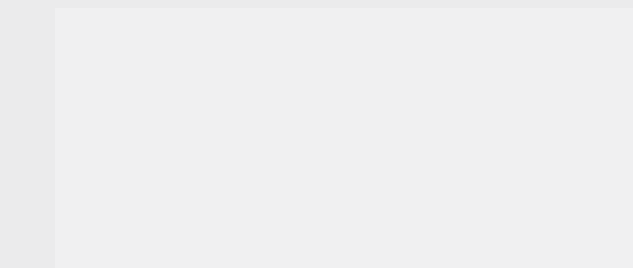
Features

Original Linde hydrostatic drive
 → Sensitive, smooth, and precise driving
 → Variable displacement pump for best energy consumption
 → No clutch, no differential, and no drum brakes thanks to hydrostatic direct drive
 → Robust drive even in extreme environments

Linde twin accelerator pedals
 → Fast and smooth travel direction changes without constantly moving feet from one pedal to the other
 → Short pedal travel
 → No strain on ankles or legs
 → Operator maintains high efficiency levels



Linde operator compartment
 → Advanced functional design for optimum operator comfort and efficiency
 → Superb working environment with spacious leg and headroom
 → Excellent visibility of the load and surrounding environment through slim-line profile mast sections
 → Resilient mounting of mast and drive axle absorbs road shocks and vibrations
 → Quiet, stress-free working



Linde ProtectorFrame
 → Enclosed, robot-welded chassis for maximum durability and protection of components
 → A hinged engine cover and service panels give easy and wide access for maintenance
 → Hand grip on A-pillar for safe on/off access



Linde Load Control
 → Mini levers for all mast functions mounted on an adjustable armrest
 → Precise and effortless fingertip control of all mast functions for safe, efficient load handling
 → Engine rpm is automatically synchronised to precisely match hydraulic demands



Variable displacement pump
 → For mast functions and additional hydraulic circuits
 → Electrically controlled by Linde Load Control levers
 → The Linde pump only provides the required oil volume
 → Lower fuel consumption
 → Less noise
 → Extended oil change intervals

High-economy engine technology
 → Modern, advanced technology Diesel, LPG and CNG engines matched to Linde's demanding requirements
 → High torque for impressive and flexible performance
 → Extremely fuel efficient
 → Exhaust emissions significantly below the approved European limits



Linde clear-view mast
 → Superb visibility through the slim profile mast sections
 → Full load capacity available up to maximum lift height
 → Excellent residual capacities
 → Maintenance-free resilient rubber mounting of mast/drive axle and tilt jacks
 → Electronic control of tilt angle
 → Electronic cushioning of end travel for forward/back tilt



Linde Material Handling GmbH, Postfach 10 01 36, 63701 Aschaffenburg, Germany
 Phone +49.60 21.99-0, Fax +49.60 21.99-15 70, www.linde-mh.com, info@linde-mh.com

Subject to modification in the interest of progress. Illustrations and technical details could include options and not binding for actual constructions. All dimensions subject to usual tolerances.

Printed in Germany 144.e3.1112.ind4.k1

Technical Data according to VDI 2198

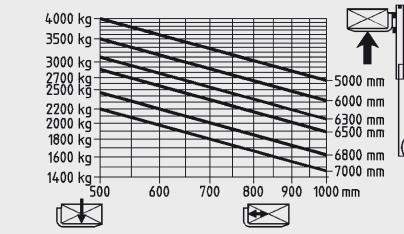
Characteristics	Model												
	1.1	1.2	1.2a	1.3	1.4	1.5	1.6	1.8	1.9	2.1	2.2	2.3	
Manufacturer	LINDE												
Model designation	H40D H45D H50/500D H50/600D H40T H45T H50/500T H50/600T H50/500D-Container¹⁾ H50/500D Raised Cab²⁾ H50/500 CNG³⁾												
Series	394-02												
Power unit	Diesel												
Operation	Seat												
Load capacity	Q (t)	4.0											
Load centre	c (mm)	500											
Axle centre to fork face	x (mm)	483											
Wheelbase	y (mm)	1998											
Service weight	(kg)	5785											
Axle load with load, front/rear	(kg)	8608 / 1177											
Axle load without load, front/rear	(kg)	2640 / 3145											
Tyres rubber, SE, pneumatic, polyurethane	SE												
Tyre size, front	250/70-15 (250-15)												
Tyre size, rear	250/70-15 (250-15)												
Wheels, number front/rear (x = driven)	2x / 2												
Track width, front	b10 (mm)	1221											
Track width, rear	b11 (mm)	1122											
Mast/fork carriage tilt, forward/backward	a/b (°)	5.0 / 9.0 ⁴⁾											
Height of mast, lowered	h1 (mm)	2370 ⁵⁾											
Free lift	h2 (mm)	150											
Lift	h3 (mm)	3000											
Height of mast, extended	h4 (mm)	3795											
Height of overhead guard (cabin)	h6 (mm)	2383											
Height of seat/stand-on platform	h7 (mm)	1226											
Towing coupling height	h10 (mm)	703											
Overall length	l1 (mm)	3984											
Length to fork face	l2 (mm)	2984											
Overall width	b1/b2 (mm)	1446 / 1423											
Fork dimensions	s/e/l (mm)	50 x 120 x 1000											
Fork carriage to ISO 2328, class/type A, B	3A												
Width of fork carriage	b3 (mm)	1350											
Ground clearance, below mast	m1 (mm)	158											
Ground clearance, centre of wheelbase	m2 (mm)	201											
Aisle width with pallet 1000 x 1200 across forks	Ast (mm)	4355 ⁶⁾											
Aisle width with pallet 800 x 1200 along forks	Ast (mm)	4555 ⁶⁾											
Turning radius	Wa (mm)	2672											
Minimum pivoting point distance	b13 (mm)	700											
Travel speed, with/without load	(km/h)	21 / 21											
Lifting speed, with/without load	(m/s)	0.53 / 0.57											
Lowering speed, with/without load	(m/s)	0.56 / 0.53											
Tractive force, with/without load	(N)	28541 / 20570											
Climbing ability, with/without load	(%)	29.0 / 34.0											
Acceleration time, with/without load	(s)	5.5 / 4.8											
Service brake	hydrostatic												
Engine manufacturer/type	VW CPYA												
Engine performance according to ISO 1585	(kW)	55											
Rated speed	(1/min)	2700											
Number of cylinders/displacement	(-/cm ³)	4 / 1968											
Fuel consumption according to VDI cycle	(l/h)	4.2											
Fuel consumption according to VDI cycle	(kg/h)	-											
Fuel consumption according to VDI cycle	(m ³ /h)	-											
Type of drive control	LTC												
Operating pressure for attachments	(bar)	170											
Oil flow for attachments	(l/min)	48											
Noise level at operator's ear	(dB(A))	79											
towing coupling, design/type, DIN 15 170	similar to form H												

1) Technical specifications for LPG version or other tonnage like H40/45 on request
 2) Technical specifications for LPG version upon request
 3) Technical specifications for H40/45 on request
 4) Lift height and equipment can alter rear mast tilt angle
 5) With 150 mm free lift on standard mast

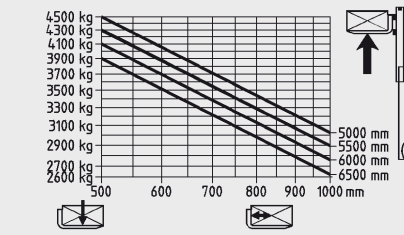
6) Including a 200 mm (min.) operating aisle clearance.
 7) (H)= high quality, (L)= low quality

Lifting capacity diagrams

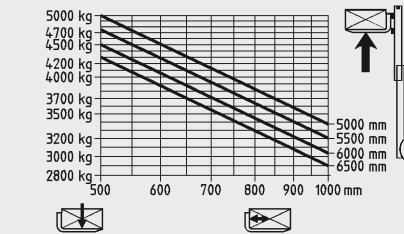
H40/500



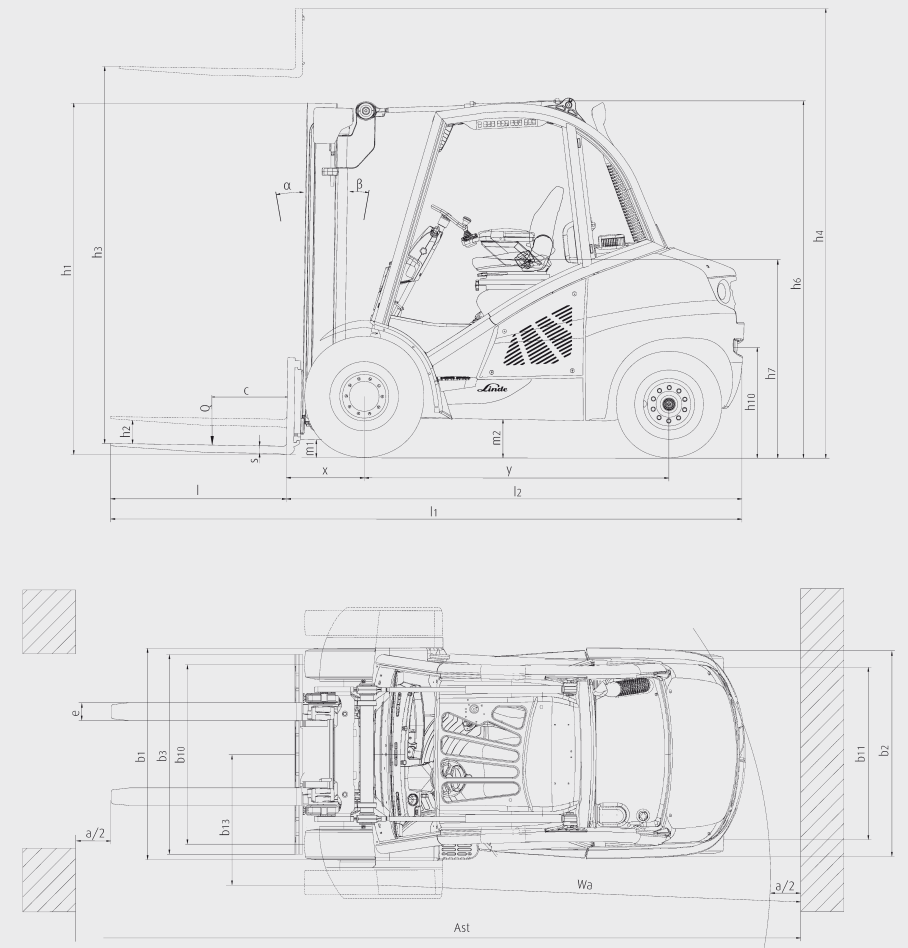
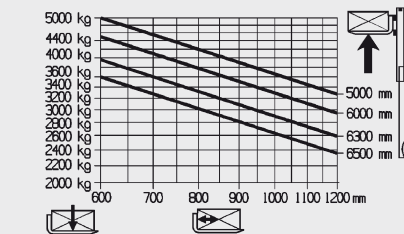
H45/500



H50/500



H50/600



Overall height and lift height Standard mast (in mm)											
Lift	h3	3000	3100	3200	3700	4100	4400	5000			
	h1	H40	2370	2420	-	2720	2920	3070	3370		
Mast retracted	h1	H45 - H50	2421	2471	-	2771	2971	3121	3421		
	h1	H50/600	-	-	2620	2870	3070	3220	3520		
Mast extended	h4	H40	3795	3895	-	4495	4895	5195	5795		
	h4	H45 - H50	3916	4016	-	4616	5016	5316	5916		
Free lift	h4	H50/600	-	-	4216	4716	5116	5416	6016		
	h2	H40 - H50	150	150	150	150	150	150	150		

Overall height and lift height Duplex mast (in mm)											
Lift	h3	3030	3130	3730	4130	-	-	-			
	h1	H40	2325	2375	2675	2875	-	-	-		
Mast retracted	h1	H45 - H50	2376	2426	2726	2926	-	-	-		
	h4	H40	3794	3894	4494	4894	-	-	-		
Mast extended	h4	H45 - H50	3946	4046	4646	5046	-	-	-		
	h2	H40	1561	1611	1911	2111	-	-	-		
Free lift	h2	H45 - H50	1460	1510	1810	2010	-	-	-		

Overall height and lift height Triplex mast (in mm)												
Lift	h3	4225	4525	4615	4675	5065	5365	5565	5865			
	h1	H40	-	2325	-	2375	-	2625	-	2825		
Mast retracted	h1	H45 - H50	-	2376	-	2426	-	2676	-	2876		
	h1	H50/600	2376	-	2526	-	2676	-	2876	-		
Mast extended	h4	H40	-	5286	-	5436	-	6126	-	6626		
	h4	H45 - H50	-	5441	-	5591	-	6281	-	6781		
Free lift	h4	H50/600	5241	-	5631	-	6081	-	6581	-		
	h2	H40	-	1564	-	1614	-	1864	-	2064		
Free lift	h2	H45 - H50	-	1460	-	1510	-	1760	-	1960		
	h2	H50/600	1360	-	1510	-	1660	-	1860	-		

Figures in mm
 Alternative lift heights available on request