

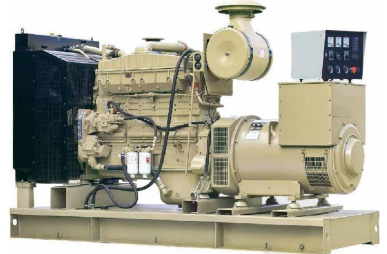



## Price List




Engine Brand and Model		Power Capacity		Coupled Alternator, Model and Price											
Engine Brand	Engine Model	Prime (KW)	Standby (KW)	QCUAN POWER (China)			MARATHON (USA)			LEROYSOMER (France)			STAMFORD (UK)		
				Model	Power (KW)	Price(USD)	Model	Power (KW)	Price(USD)	Model	Power (KW)	Price(USD)	Model	Power (KW)	Price(USD)
 <p><b>DCEC</b> <b>CUMMINS</b></p>	4B3.9-G1	22	24	QCW184F	22	4852	GM-20-4	20	5000	LSA 42.2 M7	21.6	5147	BCI 184F	22	5264
	4B3.9-G2	22	24	QCW184F	22	5147	GM-20-4	20	5294	LSA 42.2 M7	21.6	5441	BCI 184F	22	5588
	4BT3.9-G1	33	36	QCW224C	34	5205	GM-30-4	30	5441	LSA 43.2 S15	32	5735	BCI 184J	34	5852
	4BT3.9-G2	33	36	QCW224C	34	5441	GM-30-4	30	5588	LSA 43.2 S15	32	5882	BCI 184J	34	6029
	4BTA3.9-G2	45	50	QCW224E	50	6176	MP-40-4	40	6470	LSA 43.2 S35	42	6617	UCI 224D	40	6764
	6BT5.9-G1	75	83	QCW274A	80	7205	MP-75-4	75	7791	LSA 44.2 VS3	72	8235	UCI 274C	80	8529
	6BT5.9-G2	75	83	QCW274A	80	7500	MP-75-4	75	8235	LSA 44.2 VS3	72	8529	UCI 274C	80	8823
	6BTA5.9-G2	99	109	QCW274C	100	9117	MP-104-4	104	9853	LSA 44.2 S7	100	10441	UCI 274D	96	10588
	6BTA5.9-G2	108	119	QCW274D	112	9558	MP-104-4	104	10294	LSA 44.2 S75	108	11029	UCI 274E	112	11176
	6CTA8.3-G2	147	162	QCW274G	150	12500	MP-140-4	140	13235	LSA 46.2 M3	144	13970	UCI 274G	145.6	14117
	6CTAA8.3-G2	166	183	QCW274H	160	14705	MP-160-4	160	16470	LSA 46.2 M5	160	17205	UCI 274H	160	17352
6LTA8.9-G2	198	218	QCW274K	200	17647	MP-200-4	200	18676	LSA 46.2 L6	200	19217	UCI 274K	200	19558	
 <p><b>Cummins</b> <b>CCEC</b></p> <p><b>CCEC</b> <b>CUMMINS</b></p>	NT855-G	184	203	QCW274J	180	16911	MP-180-4	180	18235	LSA 46.2 L6	200	19117	UCI 274J	184	19117
	NT855-GA	208	229	QCW274K	200	17352	MP-200-4	200	18529	LSA 46.2 L6	200	19210	UCI 274K	200	19264
	MTA11-G2A	210	231	QCW274K	200	18088	MP-200-4	200	19117	LSA 46.2 L6	200	19852	UCI 274K	200	20000
	NTA855-G1	217	239	QCW274K	200	19117	MP-217-4	217	20441	LSA 46.2 L9	224	21176	UCI 274K	200	20882
	NTA855-G1A	238	262	QCW314C	240	19411	MP-240-4	240	20735	LSA 46.2 VL12	252	21764	HCI 444D	240	21838
	MTAA11-G3	254	279	QCW314D	250	20000	MP-250-4	250	21176	LSA 46.2 VL12	252	22058	HCI 444D	240	22058
	NTA855-G1B	263	289	QCW314E	260	21029	MP-260-4	260	22352	LSA 47.2 VS2	300	24558	HCI 444ES	260	23235
	NTA855-G2	263	289	QCW314E	260	24558	MP-260-4	260	25882	LSA 47.2 VS2	300	27941	HCI 444ES	260	26764
	NTA855-G2A	281	309	QCW314F	280	25000	MP-280-4	280	26470	LSA 47.2 VS2	300	28100	HCI 444E	280	26911
	NTA855-G4	287	316	QCW314F	280	26029	MP-280-4	280	27647	LSA 47.2 VS2	300	29411	HCI 444E	280	28235
	KTA19-G2	302	332	QCW314G	300	33823	MP-300-4	300	36470	LSA 47.2 VS2	300	37352	HCI 444FS	304	37647
	NTAA855-G7	308	339	QCW314G	300	29411	MP-300-4	300	32352	LSA 47.2 VS2	300	33235	HCI 444FS	304	33529
	NTAA855-G7A	333	366	QCW314H	320	30588	MP-320-4	320	32647	LSA 47.2 S4	328	33823	HCI 444F	320	33825
	KTA19-G3	367	403	QCW354C	360	41176	MP-350-4A/S	350	42647	LSA 47.2 S5	364	44117	HCI 544C	400	44852
	KTA19-G4	412	454	QCW354D	400	44117	MP-400-4A/S	400	45588	LSA 47.2 M7	400	45588	HCI 544C	400	46764
	KTAA19-G5	454	500	QCW354E	450	47058	MP-480-4A/S	480	50588	LSA 47.2 M8	440	50000	HCI 544D	440	50441
	KTAA19-G6	466	513	QCW354E	450	49705	MP-480-4A/S	480	52352	LSA 47.2 L9	480	52941	HCI 544E	488	54264
	KTA19-G8	470	518	QCW354E	450	46323	MP-480-4A/S	480	49411	LSA 47.2 L9	480	50588	HCI 544E	488	51176
	KTAA19-G6A	499	549	QCW354F	500	50000	MP-500-4A/S	500	52941	LSA 49.1 S4A	500	54705	HCI 544F-S	500	55588
	KTAA19-G7	499	549	QCW354F	500	54411	MP-500-4A/S	500	57352	LSA 49.1 S4A	500	58823	HCI 544F-S	500	59558
	KT38-G	503	554	QCW354F	500	73529	MP-500-4A/S	500	76470	LSA 49.1 S4A	500	77941	HCI 544F-S	500	78823
	KTA38-G2	598	658	QCW354H	600	79411	MX-600-4	600	83823	LSA 49.1 M65	600	86764	LVI634B	600	88088
	KTA38-G2B	646	710	QCW404D	640	83823	MX-630-4	630	88235	LSA 49.1 M75	640	91470	HCI 634G	648	92058
	KTA38-G2A	732	806	QCW404E	728	91176	MX-750-4	750	97058	LSA 49.1 L10	728	99411	HCI 634H	752	99960
	KTA38-G5	794	873	QCW404F	800	117647	MX-850-4	850	118571	LSA50.2 S4	832	121428	HCI 634J	824	124258
	KTA38-G9	891	980	QCW404G	900	123529	MX-850-4	850	125714	LSA50.2 M6	1000	128571	HCI 634K	908	131000
	KTAA38-G9A	974	1071	QCW404H	1000	140000	MX-1030-4	1030	142857	LSA50.2 M6	1000	142857	LVI634G	1000	150000
KTA50-G3	1004	1104	QCW404H	1000	165714	MX-1030-4	1030	171428	LSA50.2 M6	1000	174285	LVI634G	1000	175714	
KTA50-G8	1200	1320	QCW404K	1240	177142	MX-1240-4	1240	182857	LSA50.2 L8	1200	185714	PI 734C	1240	186142	




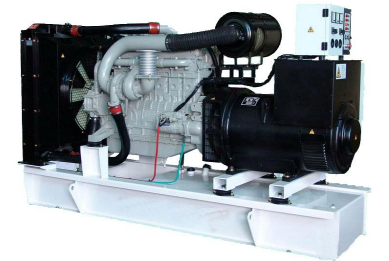
Engine Brand and Model		Power Capacity		Coupled Alternator, Model and Price											
Engine Brand	Engine Model	Prime (KW)	Standby (KW)	QCUAN POWER (China)			MARATHON (USA)			LEROYSOMER (France)			STAMFORD (UK)		
				Model	Power (KW)	Price(USD)	Model	Power (KW)	Price(USD)	Model	Power (KW)	Price(USD)	Model	Power (KW)	Price(USD)
	D226B-3D	27	30	QCW184G	25	5000	GM-24-4	24	5147	LSA 42.2 L9	25.2	5426	BCI 184G	25	5441
	TD226B-3D	41	45	QCW224D	40	5295	MP-40-4	40	5735	LSA 43.2 S35	42	6029	UCI 224D	40	6029
	TD226B-4D	54	59	QCW224E	50	6176	MP-50-4	50	6764	LSA 43.2 L65	56	7058	UCI 224F	58	7205
	TD226B-6D	81	89	QCW274A	80	7352	MP-80-4	80	8088	LSA 44.2 VS45	84	8529	UCI 274C	80	8676
	TBD226B-6D	108	119	QCW274C	100	9117	MP-104-4	104	9852	LSA 44.2 S75	108	10588	UCI 274E	112	10735
	TBD226B-6D5	119	131	QCW274E	120	10411	MP-120-4	120	11176	LSA 44.2 M95	120	11911	UCI 274F	128	12058



Engine Brand and Model		Power Capacity		Coupled Alternator, Model and Price											
Engine Brand	Engine Model	Prime (KW)	Standby (KW)	QCUAN POWER (China)			MARATHON (USA)			LEROYSOMER (France)			STAMFORD (UK)		
				Model	Power (KW)	Price(USD)	Model	Power (KW)	Price(USD)	Model	Power (KW)	Price(USD)	Model	Power (KW)	Price(USD)
	495D	24	26	QCY518A	24	1955	GM-24-4	24	2617	LSA 42.2 L9	25.2	2808	BCI 184G	25	2882
	K4100D	27	30	QCY518B	30	2051	GM-30-4	30	2808	LSA 43.2 S1	28	2941	BCI 184H	30	3088
	K4100ZD	38	41	QCY615A	40	2457	MP-40-4	40	3294	LSA 43.2 S35	42	3529	UCI 224D	40	3647
	R4105ZD	51	56	QCY616A	50	3382	MP-50-4	50	4411	LSA 43.2 L65	56	4838	UCI 224E	48	4852
	R6105ZD	76	84	QCY629A	100	4982	MP-75-4	75	5882	LSA 44.2 VS3	72	6323	UCI 274C	80	6676
	R6105AZLD	98	108	QCY629A	100	5323	MP-104-4	104	6617	LSA 44.2 S7	100	7058	UCI 274D	96	7352
	R6105IZLD	119	131	QCY633A	120	5750	MP-120-4	120	7147	LSA 44.2 M95	120	7647	UCI 274F	128	7941
	R6113ZLD	139	153	QCY732A	150	7352	MP-140-4	140	8823	LSA 44.2 L12	132	9411	UCI 274G	145.6	9705



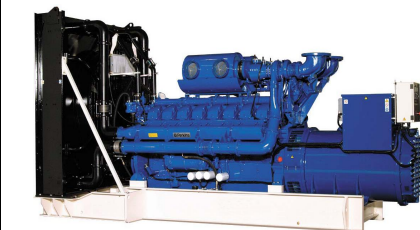
Engine Brand and Model		Power Capacity		Coupled Alternator, Model and Price											
Engine Brand	Engine Model	Prime (KW)	Standby (KW)	QCUAN POWER (China)			MARATHON (USA)			LEROYSOMER (France)			STAMFORD (UK)		
				Model	Power (KW)	Price(USD)	Model	Power (KW)	Price(USD)	Model	Power (KW)	Price(USD)	Model	Power (KW)	Price(USD)
	G6190ZLD	486	535	QCW354F	500	40714	MP-480-4A/S	480	42857	LSA 49.1 S4A	500	44285	HCI 544E	488	44857
	Z8V190	529	582	QCW354G	550	55714	MP-500-4A/S	500	58571	LSA 49.1 S4	528	59980	HCI 544F	536	61857
	PZ8V190	529	582	QCW354G	550	57142	MP-500-4A/S	500	59571	LSA 49.1 S4	528	61428	HCI 544F	536	62714
	8190ZLD	648	713	QCW404D	640	54285	MX-630-4	630	58600	LSA 49.1 M75	640	61571	HCI 634G	648	62142
	Z12V190B	794	873	QCW404F	800	71428	MX-750-4	750	76714	LSA50.2 S4	832	79800	HCI 634J	824	81285
	Z12V190BD2	794	873	QCW404F	800	74285	MX-750-4	750	79428	LSA50.2 S4	832	83142	HCI 634J	824	83857
	PZ12V190B	794	873	QCW404F	800	77142	MX-750-4	750	81428	LSA50.2 S4	832	84285	HCI 634J	824	85714
	Z12V190BD7	893	982	QCW404G	900	79980	MX-850-4	850	85714	LSA50.2 M6	1000	90857	HCI 634K	908	89900
	G12V190ZL1	900	990	QCW404G	900	81428	MX-850-4	850	86743	LSA50.2 M6	1000	91857	HCI 634K	908	92000
	A12V190ZLD	1080	1188	QCW404H	1000	128571	MX-1030-4	1030	134285	LSA50.2 L7	1080	138571	PI 734B	1120	138571
	Z12V190PZL	1080	1188	QCW404H	1000	140900	MX-1030-4	1030	146285	LSA50.2 L7	1080	150000	PI 734B	1120	150080
	BH12V190ZL	1206	1327	QCW404K	1240	140428	MX-1240-4	1240	146571	LSA50.2 L8	1200	147142	PI 734C	1240	147258
	BH12V190PZL	1206	1327	QCW404K	1240	142857	MX-1240-4	1240	157142	LSA50.2 L8	1200	158571	PI 734C	1240	158571
	H12V190ZLD	1566	1723	QCW454E	1500	228571	MX-1540-4	1540	228990	LSA51.2 M60	1600	242857	PI 734E	1520	242880
	H16V190ZL	2160	2376	QCW454H	2000	332857	/	/	/	/	/	/	/	/	/





# Kingte Power Machinery Limited

Engine Brand and Model		Power Capacity		Coupled Alternator, Model and Price											
Engine Brand	Engine Model	Prime (KW)	Standby (KW)	QCUAN POWER (China)			MARATHON (USA)			LEROYSOMER (France)			STAMFORD (UK)		
				Model	Power (KW)	Price(USD)	Model	Power (KW)	Price(USD)	Model	Power (KW)	Price(USD)	Model	Power (KW)	Price(USD)
Perkins 帕金斯	403D-11G	7	8	QCW164B	8.8	4428	GM-8.6-4	8.6	4714	/	/	/	BCI 164B	8.8	4857
	403D-15G	10	11	QCW164C	10.8	4857	GM-12-4	12	5142	LSA 42.2 S4	14	5285	BCI 164C	10.8	5428
	404D-22G	16	18	QCW184E	18	5714	GM-16-4	16	6000	LSA 42.2 S5	16	5990	BCI 184E	18	6285
	404D-22TG	21	23	QCW184F	22	6428	GM-20-4	20	6571	LSA 42.2 M7	21.6	6714	BCI 184F	22	7142
	1103C-33G2	25	28	QCW184G	25	7714	GM-24-4	24	7857	LSA 42.2 L9	25.2	8142	BCI 184G	25	8571
	1104C-44G1	32	35	QCW184H	30	8428	GM-32-4	32	8714	LSA 43.2 S15	32	8990	BCI 184J	34	9428
	1103C-33TG2	37	41	QCW224D	40	8390	MP-40-4	40	8769	LSA 43.2 S25	36	8857	UCI 224D	40	9571
	1104C-44TG2	48	53	QCW224E	50	9857	MP-48-4	48	10428	LSA 43.2 M45	48	10857	UCI 224E	48	11428
	1104C-44TAG1	64	70	QCW224G	70	10857	MP-64-4	64	11428	LSA 43.2 L8	64	11857	UCI 224G	68	12428
	1006TG1A	75	83	QCW274A	80	11857	MP-75-4	75	12428	LSA 44.2 VS3	72	12857	UCI 274C	80	13714
	1006TG2A	82	90	QCW274A	80	12428	MP-80-4	80	13142	LSA 44.2 VS45	84	13760	UCI 274C	80	14428
	1106C-E66TAG2	110	121	QCW274D	112	16857	MP-104-4	104	17571	LSA 44.2 S75	108	18285	UCI 274E	112	19285
	1106C-E66TAG3	120	132	QCW274E	120	18000	MP-120-4	120	18857	LSA 44.2 M95	120	19428	UCI 274F	128	20428
	1106C-E66TAG4	147	162	QCW274G	150	19142	MP-140-4	140	19857	LSA 46.2 M3	144	20571	UCI 274G	145.6	21571
	1306C-E87TAG3	166	183	QCW274H	160	27571	MP-160-4	160	28142	LSA 46.2 M5	160	28570	UCI 274H	160	30285
	1306C-E87TAG4	182	200	QCW274J	180	28142	MP-180-4	180	28571	LSA 46.2 L6	200	30142	UCI 274J	184	31285
	1306C-E87TAG5	188	207	QCW274J	180	28571	MP-180-4	180	29714	LSA 46.2 L6	200	30576	UCI 274J	184	31857
	1306C-E87TAG6	200	220	QCW274K	200	29000	MP-200-4	200	30285	LSA 46.2 L6	200	30714	UCI 274K	200	32285
	2306C-E14TAG1	240	264	QCW314C	240	30000	MP-240-4	240	31571	LSA 46.2 VL12	252	32579	HCI 444D	240	34000
	2306C-E14TAG2	280	308	QCW314F	280	30857	MP-280-4	280	32571	LSA 47.2 VS2	300	34286	HCI 444E	280	34428
	2206C-E13TAG3	320	352	QCW314H	320	34285	MP-320-4	320	36570	LSA 47.2 S4	328	37714	HCI 444F	320	39428
	2506C-E15TAG1	364	400	QCW354C	360	42857	MP-350-4A/S	350	45571	LSA 47.2 S5	364	46714	HCI 544C	400	49285
	2506C-E15TAG2	400	440	QCW354D	400	45714	MP-400-4A/S	400	48000	LSA 47.2 M7	400	49142	HCI 544C	400	51428
	2806C-E18TAG1A	473	520	QCW354F	500	60000	MP-480-4A/S	480	62285	LSA 47.2 L9	480	63428	HCI 544E	488	66857
	2806A-E18TAG2	520	572	QCW354G	550	67857	MP-500-4A/S	500	69857	LSA 49.1 S4	528	71428	HCI 544F	536	76285
	4006-23TAG2A	584	642	QCW354H	600	94285	MX-560-4	560	97142	LSA 49.1 M6	580	100000	LVI634B	600	106428
	4006-23TAG3A	640	704	QCW404D	640	98571	MX-630-4	630	102857	LSA 49.1 M75	640	105714	HCI 634G	648	111714
	4008TAG	679	747	QCW404E	728	125714	MX-700-4	700	130857	LSA 49.1 L9	704	132857	HCI 634H	752	140285
	4008TAG1A	724	796	QCW404E	728	127142	MX-750-4	750	133428	LSA 49.1 L10	728	135767	HCI 634H	752	142000
	4008TAG2A	818	900	QCW404F	800	131428	MX-850-4	850	137142	LSA50.2 S4	832	139721	HCI 634J	824	145714
	4012-46TWG2A	1002	1102	QCW404H	1000	185714	MX-1030-4	1030	191428	LSA50.2 M6	1000	194289	LVI634G	1000	202857
	4012-46TWG4A	1091	1200	QCW404J	1120	210000	MX-1030-4	1030	214285	LSA50.2 L7	1080	218571	PI 734B	1120	228571
	4012-46TAG2A	1204	1324	QCW404K	1240	211428	MX-1240-4	1240	218571	LSA50.2 L8	1200	220000	PI 734C	1240	230000
	4012-46TAG3A	1364	1500	QCW454D	1350	228571	MX-1350-4	1350	235714	LSA50.2VL10	1312	237142	PI 734D	1320	248576
	4016TWG2	1350	1485	QCW454D	1350	328571	MX-1350-4	1350	332857	LSA50.2VL10	1312	334285	PI 734D	1320	356000
	4016TAG	1402	1542	QCW454E	1500	312857	MX-1540-4	1540	318571	LSA51.2 S55	1440	321428	PI 734E	1520	335786
	4016TAG1A	1476	1624	QCW454E	1500	320000	MX-1540-4	1540	325714	LSA51.2 S55	1440	328571	PI 734E	1520	342658
	4016TAG2A	1646	1811	QCW454F	1600	337142	MX-1800-4	1800	345718	LSA51.2 M60	1600	347142	PI 734F	1664	364285



## Silent case price

Power range	Unit	Price(USD)	Dimension(mm)	Weight(Kg)	Fuel Tank Volum(L)
10-30kw	set	1571	2200×1000×1460	420	140
20-50kw	set	1672	2400×1000×1560	500	160
75-120kw	set	2785	3000×1240×1760	820	340
150-200kw	set	2975	3300×1400×1950	950	420
150-300kw	set	3528	4000×1800×2150	1800	720
250-300kw	set	4914	4300×2100×2300	2000	720
400kw	set	5942	4700×2100×2450	2300	750
500kw	set	6314	4900×2250×2600	2800	1000
600-800kw	set	10244	6000×2400×2800	3800	1300
600-1000kw	set	16714	9000×3000×3400	7000	2500



## Trailer Price(4 wheels)

Power range	Unit	Price(USD)	Dimension(mm)	Weight(Kg)	Fuel Tank Volum(L)
10-30kw	set	2285	2200×1700×2300	920	140
20-50kw	set	2414	2400×1700×2400	1000	160
75-120kw	set	3714	3000×2950×2700	1500	340
150-200kw	set	3857	3300×2100×2850	1700	420
150-300kw	set	4828	4000×1800×3100	2800	720
250-300kw	set	6314	4300×2100×3300	3200	720
400kw	set	7615	4700×2100×3400	3800	750
500kw	set	8357	4900×2250×3600	4200	1000



## Trailer Price(3 wheels)

Power range	Unit	Price(USD)	Dimension(mm)	Weight(Kg)	Fuel Tank Volum(L)
10-30kw	set	2142	2200×1700×2300	850	140
20-50kw	set	2285	2400×1700×2400	930	160
75-120kw	set	3571	3000×2950×2700	1300	340
150-200kw	set	3800	3300×2100×2850	1500	420

