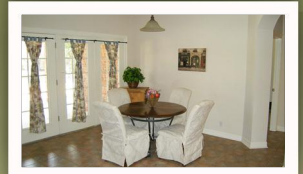
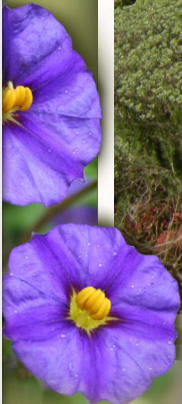




Diane Anderson
Design Realty & Finishes, inc.
512-789-4462
 designrealty@att.net
<http://agent-72312.pages.tourfactory.com>

MLS #: 8573098
 4 Beds, 3 Baths
\$405,000



11305 County Down Drive, Austin, TX 78747

Impressive Solid One Story Red Brick Traditional sitting high on a .324 acre Members Only Golf Course lot in the esteemed Onion Creek Subdivision. Absolutely pristine on the inside & may I add, the only area of Austin where you can get a luxury home like this, close to downtown and the Austin airport for \$126.00 per sqft. This majestic beauty boasts 5bdrms & 3baths. 1 bdrm an obvious office at the entry, another 1 could certainly be a game room, it really is that big, of course the Master Suite with a sitting area and gas fireplace to enjoy and last the guest bedroom and bath down it's own wing for the ultimate in privacy. The kitchen, at the center of the house, is especially designed for entertaining. With the 6 burner cook top on a separate granite island facing the family/brkfst areas a hostess can hold court while gazing out the wall of windows to the backyard. The granite island behind to be used as a buffet when having guests. With 2 Living Areas (a formal and family) and 2 Dining (a formal and breakfast) all types of entertaining will have their own room. At the end of the street on a cul-de-sac, you'll have no traffic and the subdivision 24/7 security is never too far away. Your beautiful landscaped .32 ac yard so lovely you may never want to leave home again. If your looking for the perfect floor plan in the perfect setting, this might be it. Come see for yourself.

Find your next house, with the click of your mouse... www.DesignRealtyHomes.com



EQUAL HOUSING OPPORTUNITY

Information supplied by sellers. Deemed reliable but not guaranteed.

See the Virtual Tour! www.tourfactory.com/903716