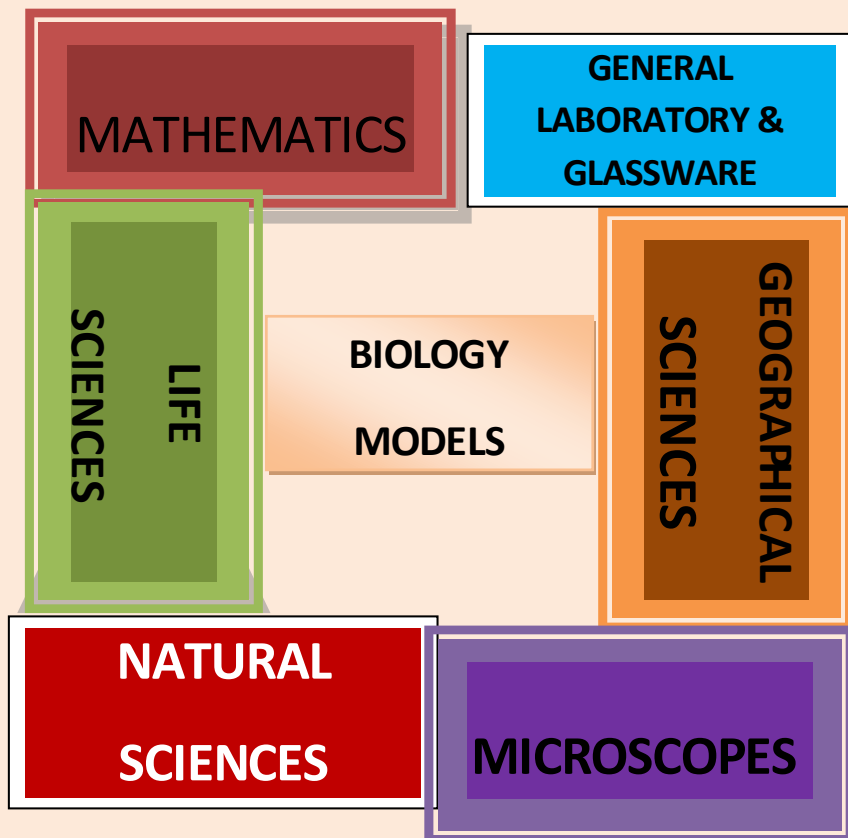




REBOCHEM LABORATORY & EDUCATIONAL CATALOGUE



PHYSICAL ADDRESS
11 GEMSBOK STREET
IMPALA PARK
MOKOPANE
LIMPOPO

CONTACT US

☎ +27 15 491 8097
FAX +27 86 514 0895
📞 +27 71 693 1241
📞 +27 76 678 6222

@ 📧 rebochem@telkomsa.net
@ 📧 rebochem@webmail.co.za

P.O. BOX 4032
MOKOPANE
0600

REBOCHEM

OBJECTIVE

THE ENTITY IS AWARE OF A DIRE NEED FOR LABORATORY EQUIPMENT AND APPARATUS IN SOUTH AFRICAN SCHOOLS DUE TO VARIED FACTORS. THE COMPANY'S MAIN OBJECTIVE IS TO MAKE LAB PRODUCTS SUCH AS GLASSWARE, BIOLOGY MODELS, MICROSDCOPEs, EDUCATIONAL TEST KITS, BALANCES, SCALES, CHEMICALS, LAB CHARTS, TECHNOLOGICAL KITS, EARTH SCIENCES, GEOGRAPHY AND PLASTICWARE AVAILABLE TO SCHOOLS AND LABORATORIES AT AFFORDABLE PRICES.

THE CATALOGUE, WHILE NOT EXHAUSTIVE, STRIVES TO PRESENT A VARIED RANGE OF LAB EQUIPMENT AND CHEMICALS IN AS CLEAR AND INFORMATIVE A WAY AS TO BE USER-FRIENDLY FOR TEACHERS AND ADMINISTRATORS.

TO ENQUIRE ABOUT ANY OF THE PRODUCTS LISTED HEREIN JUST GIVE US A CALL... OR DROP US AN EMAIL. WE WOULD BE MORE THAN HAPPY TO ATTEND TO YOUR VALUED INQUIRY.

PLEASE NOTE THAT PICTURES DEPICTED HEREIN CHANGE FROM TIME TO TIME, AND AS SUCH PRODUCTS ARE SUBJECT TO AVAILABILITY.

REBOCHEM

QUALITY

REBOCHEM IS FAIRLY A NEW KID IN THE BUSINESS. WE ARE CONSTANTLY TRYING TO BUILD A REPUTATION AS THE VERITABLE SUPPLIER OF QUALITY LABORATORY PRODUCTS GEARED TOWARDS THE SCHOOL MARKET. OUR ITEMS, BOTH LOCALY MANUFACTURED AND IMPORTED, ARE GUARANTEED TO MEET THE STANDARD OF QUALITY ENVISAGED BY OUR CUSTOMERS.

VARIETY

REBOCHEM CATALOGUE, TOGETHER WITH OUR PRICE LIST, PROVIDE FOR EXTENSIVE VARIETY OF ITEMS TO MEET VIRTUALLY THE NEEDS OF EVERY LEARNER BASED, MANUFACTURING, RESEARCH, VETERINARY AND AGRICULTURAL APPLICATIONS.

SERVICE

AT REBOCHEM WE VALUE OUR CUSTOMERS, SO WE DEDICATE OURSELVES TO RESPONDING EFFECTIVELY, TIMEOUSLY AND IN A COURTEOUS MANNER TO CUSTOMER ENQUIRIES, QUOTATIONS, ORDERS AND TECHNICAL ADVICE.

DELIVERY

GOODS AVAILABLE EX-STOCK WILL BE DISPATCHED IN A REASONABLE TIME-FRAME. ALLOWANCE IS MADE WHERE SOME OF THE GOODS ARE IMPORTED, IN CASES WHERE A TWO-WEEK'S PERIOD IS OFTEN ACCOUNTED FOR IN TURNAROUND TIME.

CONTENTS

| SECTION | PAGE |
|------------------------------------|------|
| ∅ BALANCES AND SCALES | 04 |
| ∅ BIOLOGY MODELS | 06 |
| ∅ CHEMICALS | 08 |
| ∅ GEOGRAPHY AND EARTH SCIENCES | 10 |
| ∅ KITS AND MODULES | 12 |
| ∅ LABORATORY CHARTS | 17 |
| ∅ LABORATORY FURNITURE | 18 |
| ∅ GENERAL LABORATORY AND GLASSWARE | 20 |
| ∅ MICROSCOPES | 33 |
| ∅ NATURAL SCIENCES | 35 |
| ∅ TECHNOLOGY | 43 |
| ∅ MATHEMATICS | 53 |

BALANCES



& SCALES



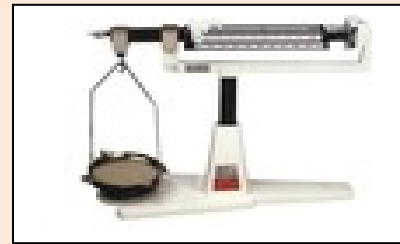
ΣWBS01 BEAM BALANCE

- >Capacity: 2kg
- >Sensitivity: 1g
- >Two pan scale
- >Cast iron
- >Pan: 200mmØ



ΣWBS02 BEAM BALANCE – TRIPLE

- >Taring range:225g
- >Sliding weights
- >Tared beams with graduation
- >Front beam graduated to 10g
- > Centre beam graduated to 500g
- >Rear beam graduated to 100g
- >Stainless steel platform
- >Capacity: 2600g
- >Sensitivity: 0.1g



ΣWBS03 BEAM BALANCE TRIPLE – SINGLE PAN

- >Balance dial
- >Dial-o-gram
- >Beams graduated 0-500X100g
- >Direct reading – dial graduated 0 to X10 X0.1g
- >Steel pan
- >Capacity: 2610X0.1g



WEB04 ELECTRONIC BALANCE

- >Model : EB0450
- >Tared value store
- >Reset to zero
- >Main adapter
- >Capacity: 450g
- >Readability: 0.1g
- >Power 220-240V or battery
- > Pan: 160X133mm stainless steel



WEB007 PRECISION ELECTRONIC BALANCE

- >Tared value store
- >Reset to zero
- >Main adapter
- >Capacity: 250g
- >Readability: 0.01g
- >Power 220-240V or battery
- > Pan: 160X133mm stainless steel



WEB05 ELECTRONIC BALANCE

- >Model: EBO600
- >Tared value store
- >Reset to zero
- >Main adapter
- >Capacity: 600g
- >Readability: 0.2g
- >Power mains or battery
- > Pan: 160X130mm stainless steel



WMB008 MEASURING BALANCE

- >1g sensitivity
- >Durable plastic moulded scale
- >Detachable buckets
- > 1000cc capacity with graduation
- >Pan or bucket balance
- >Lids for each bucket provided



WEB06 ELECTRONIC BALANCE

- >Tared value store
- >Reset to zero
- >Main adapter
- >Capacity: 2000g
- >Readability: 0.1g
- >Power 220-240V or battery
- > Pan: 160X133mm stainless steel



WMS009 MASS SET

- >Brass
- >Case with hinged lid
- >Forceps and fractions
- >Divided compartments for easier storage
- >1-100g weight pieces

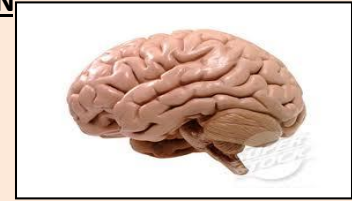


BIOLOGY MODELS



RAM01 ANATOMICAL MODEL BRAIN

- >Dissectible into halves
- >Mounted on a base
- >Natural or synthetic cast
- >Different sections identified



RAM02 ANATOMICAL MODEL EAR

- >Four part model
- >Made from rigid plastic
- >Model enlarged 3 times
- >Shows essential details of the ear



RAM03 ANATOMICAL MODEL EYE

- >Enlarged 4 times
- >Cross-section through the eye
- >Shows sclera, choroid, retina optic nerve, vitreous body, lens, iris, ciliary body and cornea
- >Retina and choroidal vascular systems also show



RAM04 ANATOMICAL MODEL HEART

- >Enlarged 2.5 times
- >Made from rigid plastic
- >Dissectible into 3 parts
- >Colour feature finish to show all parts
- >Mounted on a stand



RAM05 ANATOMICAL MODEL KIDNEY

- >Enlarged 4 times
- >Dissected into halves
- >Shows all the main features
- >Made from durable synthetic material
- >Mounted on a stand



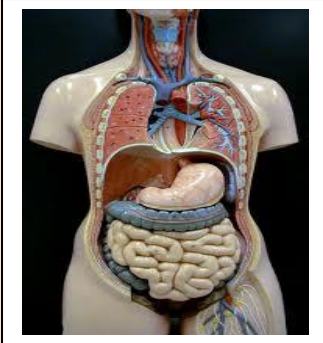
RAM06 ANATOMICAL MODEL SKELETON

- >Full size model, fully articulated
- >Skull divided into 3 parts
- >Arms and legs detachable
- >Mounted on roller stand
- >Height 1750mm



RAM07 ANATOMICAL MODEL TORSO

- >Supplied as a complete piece
- >Rubberised for durability
- >Natural size
- >Separable into 8 parts
- >Mounted on stand



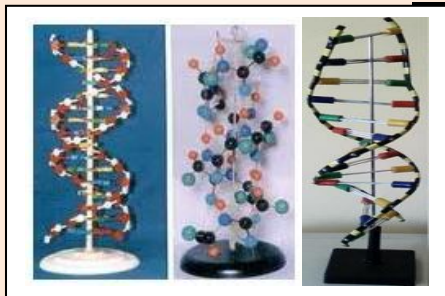
RAM08 ANATOMICAL ANIMAL & PLANT CELL

- >3 Dimensional
- >Shows form, structure, relationship of cell
- >Cross section mounted on plastic base
- >Fitted with transparent removable case
- >Numbered and color coded
- >Enlarged 20 000X
- >Shows centrioles, lysosomes, and fat vacuoles



RAM09 ANATOMICAL DNA MODEL

- >Simplified presentation of double stranded DNA
- > Durable plastic
- > Colour coded to easily identify
- >Height 500mm
- >Contains 10 paired nucleotides
- >Mounted on plastic base



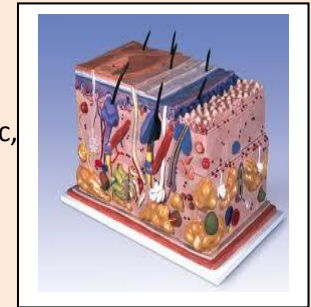
RAM010 ANATOMICAL MOLECULAR MODEL

- >Contain organic and inorganic sets
- >Molecules range from simple to complex ions
- >Gray links of 2 lengths for single and covalent bonding
- >Supplied with durable plastic tray
- >Sphere:
 - #6 carbon, 22 oxygen, 10 nitrogen, 12 sulphur, 8 halogen, 14 metal, 7 P, 14 H
- >Links:
 - #50 medium gray and mauve, 36 long gray



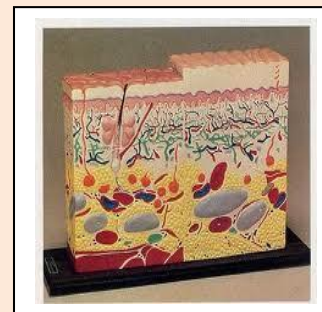
RAM011 ANATOMICAL SKIN MODEL

- >Cut-away view shows skin layer, follicles, sweat glands, nerve endings, blood vessels
- >Each feature numbered, high impact plastic, reinforced with foam.
- > Enlarged cross section shows human skin with 3 layers, front, side and back view, mounted on plastic base,
- >Not dissectible.



RAM12 ANATOMICAL SKIN MODEL

- >Cut-away view shows skin layer, follicles, sweat glands, nerve endings, blood vessels, each feature numbered, high impact plastic, reinforced with foam.
- > Enlarged cross section shows human skin with 3 layers, front, side and back view, mounted on plastic base,
- >Not dissectible.





CHEMICALS

FOLLOWING IS A SAMPLE OF CHEMICALS AVAILALE.

MOST ITEMS AVAIOLABLE IN PACKS OF 100g, 250g, 500g, 1kg

DRY CHEMICALS

| | | |
|-----------------------------|-----------------------------|---------------------------|
| Agar Corn Meal | EDTA | Magnesium sulphate |
| Agar powder | Eosin yellow | Maltose |
| Aluminium ammonium sulphate | Fast green | Manganese acetate |
| Aluminum chloride | Ferric (Iron III) chloride | Manganese carbonate |
| Aluminum nitrate | Ferric (Iron III) nitrate | Manganese chloride |
| Aluminum oxide | Ferric (Iron III) oxide red | Manganese dioxide |
| Aluminum potassium sulphate | Ferric (Iron III) sulphate | Mercuric chloride |
| Aluminum sulphate | Ferrous (Iron II) chloride | Mercuric nitrate |
| Ammonium acetate | Ferrous (Iron II) oxalate | Mercuric oxide red |
| Ammonium carbonate | Fructose | Mercuric oxide yellow |
| Ammonium ceric nitrate | Galactose | Mercury metal |
| Ammonium chloride | Gelatin | Methyl blue pH indicator |
| Ammonium dichromate | Glucose powder | Methylene blue powder |
| Ammonium sulphate | Graphite powder | Methyl orange |
| Ammonium thiocyanate | Indigo Carmine | Naphthalene Marbles |
| Barium carbonate | Iodine crystals | Nickle carbonate |
| Barium chloride | Iron (II) Chloride | Nitric acid 55% |
| Barium hydroxide | Iron filings | Oxalic acid |
| Barium nitrate | Iron (II) Chloride | Paraffin wax |
| Barium sulphate | Iron filings | Pepsin |
| Boric acid | Lactose | Petroleum jelly |
| Broth Nutrients | Lead acetate | Phenol crystals |
| Cadmium chloride | Lead bromide | Phenol red |
| Calcium carbonate chips | Lead carbonate | Phenolphthalein indicator |
| Calcium hydroxide | Lead chloride | Phosphorous pentoxide |
| Calcium oxide | Lead dioxide | Phosphorous red |
| Calcium sulphate | Lead iodide | Potassium bromate |
| Cellulose | Lead metal granular | Potassium bromide |
| Chromium chloride | Lead monoxide | Pottassium carbonate |
| Cobalt chloride | Lead nitrate | Potassium chlorate |
| Cobalt nitrate | Lipase | Potassium chloride |
| Copper (Cupric) Carbonate | Lithium chloride | Potassium chromate |
| Copper (Cupric) chloride | Lithium hydroxide | Potassium citrate |
| Copper (Cupric) nitrate | Magnesium carbonate | Potassium dichromate |
| Copper (Cupric) oxide | Magnesium chloride | Potassium ferrocyanide |
| Copper (Cupric) sulphate | Magnesium hydroxide | Potassium hydroxide |
| Crystal violet | Magnesium metal filings | Potassium iodate |
| Citric acid | Magnesium metal powder | Potassium iodide |
| Diaminhexane | Magnesium metal ribbon | Potassium metal |
| 2-4 Dinitrophenyl hydrazine | Magnesium nitrate | Potassium nitrate |
| Dry ice | Magnesium oxide | Potassium oxalate |

DRY CHEMICALS

| | | |
|-----------------------------|----------------------------|-------------------------|
| Potassium permanganate | Sodium hydrogen phosphate | Stroctium nitrate |
| Potassium phosphate dibasic | Sodium hydrogen sulphate | Sucrose |
| Potassium sodium tartrate | Sodium hydrogen sulphite | Sudan III |
| Potassium sulphate | Sodium hydroxide pellets | Sulphur powder |
| Potassium thiocyanate | Sodium iodate | Tannic acid |
| Protease | Sodium iodide | Tartaric acid |
| Pyrogallol acid | Sodium metabisulphide | Tin metal |
| Quinine sulphate | Sodium metal | Tin (Stannous) chloride |
| Safranino | Sodium metasilicate | Tin (Stannous) oxide |
| Salicylic acid | Sodium nitrate | Trichloroacetic acid |
| Silica gel | Sodium nitrite | Trypsin |
| Silicone grease | Sodium oxalate | Urea |
| Silver chloride | Sodium peroxide | Urease |
| Silver nitrate | Sodium phosphate dibasic | Wax bees |
| Soda lime | Sodium salicylate | Wright's stain powder |
| Sodium acetate | Sodium silicate | Yeast dried |
| Sodium alginate | Sodium sulphate | Zinc carbonate |
| Sodium bicarbonate | Sodium sulphide | Zinc chloride |
| Sodium bromide | Sodium sulphite | Zinc metal foil |
| Sodium carbonate | Sodium tetraborate (Borax) | Zinc metal grannular |
| Sodium chloride | Sodium thiocyanate | Zinc metal strips |
| Sodium chromate | Sodium thiosulphate | Zinc nitrate |
| Sodium citrate | Starch powder | Zinc oxide |
| Sodium dichromate | Stearic acid | Zinc sulphate |
| Sodium hydrogen carbonate | Stroctium chloride | |

LIQUID CHEMICALS

| | | |
|--------------------------------|------------------------------|-------------------------------|
| Acetaldehyde | Distilled water | Methylene blue solution |
| Acetic acid | Eosin yellow solution | Methyl orange solution |
| Acetone | Ethanol 96% | Millons reagent |
| Ammonia solution 25% | Ethyl acetate | Nessler's reagent |
| Aniline blue alcohol solution | Ethelyne glycol | Nitric acid 55% |
| Barium chloride solution, 0.1m | Fehlings solution A | Octanol |
| Barium nitrate solution | Ferrous sulphate solution | Oleic acid |
| Benedict solution | Formaldehyde/Formalin | Olive oil |
| Benzene | Fomic/Methanoic acid | Orcein stain solution |
| Bicarbonate indicator | Gentian violet solution | Orthophosphoric acid |
| Biuret solution A | Glycerine/Glycerol | Paraffin liquid |
| Biuret solution B | Haema toxylin solution | Pentane |
| Bromine | Hexamethylenediamine | Pentanol |
| Bromine water | Hexane / Petroleum spirit | Phenolphthalein solution |
| Bromo cresol green solution | Hexene | Phosphoric acid 85% |
| 1-Bromobutane | Hydrochloric acid | Picric acid solution |
| Bromothymol blue solution | Hydrogen peroxide | Potassium dichromate solution |
| Buffer solutions | Immersion oil for microscopy | Potassium hydroxide solution |
| Butanol-1 | Iodine solution 0.1N | Potassium nitrate solution |
| Butyric acid (Butanoic acid) | Iodobutane-1 (Butyliodide) | Propanol |
| Canada balsam | Lactic acid | Propanoic acid |
| Carbon disulphide | Leishman Stain Solution | Ringer's solution |
| Carbon tetrachloride | Lime water | Safranin solution |
| Castor oil | Litmus solution | Schultz's solution |
| Chlorine water | Methanol | Sodium carbonate 1M solution |
| Chlorobutane-1 | Methyl benzene (Toulene) | Sodium hydroxide solution 1M |
| Chloroform | Methyl methacrylate | Sodium hypochlorite |
| Copper sulphate solution, 0.1M | Methylated spirits Colour | Sodium silicate |
| Crude oil | Methylene blue solution | Sulphuric acid 98% |
| Cresol red solution | Methyl orange solution | Tetrabromoethane |
| Crystal violet solution | Millons reagent | Universal Indicator solution |
| Cyclohexane | Nessler's reagent | Wright's stain solution |
| Cyclohexene | Nitric acid 55% | Xylene |
| Diethyl ether | Octanol | Zinc sulphate solution 1M |

GEOGRAPHY

&

EARTH SCIENCES



GES001 ANEMOMETER

- >Electronic
- >Multi functional
- >Data holding button
- >Timers to indicate air flow & speed
- >Complete with case and manual



GES002 ANEROID BAROMETER

- >95mm dial scale
- >Plastic casing
- >Demonstration type



GES003 ORIENTEERING COMPASS

- >Liquid damped needle
- >Transparent housing
- >Plastic base plate
- >Calibrated 0-360 X2°
- >Cardinal points – N, S, E, W
- >Luminiscent
- >Carrying cord



GES004 POCKET COMPASS

- >Needle closed in rotatable housing
- >Clockwise 0-360° scale
- >North & South index lines
- >35mm Ø



GES005 GLOBE

- >Political
- >Geographical
- >300mm Ø
- >Illuminated or non-illuminated
- >Durable material

GES006 HYGROMETER – WET & DRY BULB

- >Polypropylene plastic case
- >Lid and bulb protectors
- >Detachable plastic water cistern
- >Supplied with hygrometric tables,
- >Spare wick and mounting screws
- >Range -5-55°C
- >320 x 80mm



GES007 ORBITER

- >Simple model showing the relationship between the sun, the planets and the orbits of the planets.

GES008 ORBITER – TELLURIUM

- >Perfect engineered model allowing for:
 - *demonstration of night and day
 - *seasons
 - *phases of the moon
- >eclipses
- >changing length of days
- > direction of shadows during the day
- >direction of shadows during seasons
- >showing the sun's apparent motion



GES009 RAIN GAUGE – METAL & PLASTIC

- *METAL
- >Copper outer container and funnel
- >Inner graduated glass measuring cylinder
- *PLASTIC
- >Cone type, graduated in millimeters
- >Bracket for pole mounting

GES010 STEVENSON SCREEN

- >Simple wooden construction
- >Louvred front round with hinged door
- >530 X 240 X 410mm
- >Contains thermometers, hygrometer for:
 - *maximum readings
 - *Wet and dry hygrometer



GES0012 STETHOSCOPE

- >For clinical and laboratory use
- >Single head instrument
- >Monitors heart beat
- >Plastic fitted metal eartips

GES011 STEREOSCOPE

- >Folding steel legs
- >2.2 magnification
- >Inter-pupillary adjustment
- >60-70mm
- >4.7inch focal distance



GES013 WIND VANE

- >Simple pattern and solid construction
- >Attachments to mount on pole
- >Dimensions: 350X450mm
- >Supplied with 4 detachable carrying points for the compass attached below the vane.

KITS
&
MODULES



KMB001 BIOLOGY KIT GRADE 10-112

- >Lockable metal cabinet with topic trays
- >Contains teacher demonstration kit
- >Covers entire senior biology syllabus
- >Ideal for OBE & CAPS (Curriculum and Assessment Policy Statement)
- >Supplied with instruction manual

KMC002 KIT CHEMISTRY GRADE 4-12 WATER PURIFICATION

- >Designed for learner participation and group work
- >Complete set of conventional apparatus
- >Suitable for all chemistry experiments for Grades 4 to 12
- > Ideal for OBE & CAPS (Curriculum and Assessment Policy Statement)
- >Supplied with instruction manual



KMCB003 CIRCUIT BOARD KIT

- >Designed for basic study of circuits
- >Designed to investigate parallel and series circuit, the use of ammeters and voltmeters, the effects of resistors and the relationship of volt resistance and power
- >Ammeter and voltmeter optional extras

KMDS004 DYNAMIC SET

- >Complete system, modern compact design
- >Eliminates rough runways
- >Low friction trolley
- >1.2 meter guided extruded aluminium track
- >Standard and spring loaded trolley
- >Ticker timer and ticker tape
- >Includes pulley, mass piece, cotton reel, carbon disc, hooks, stop watch, spirit level.





KMEE005 ELECTRICITY KIT

- >Suitable for Grades 10-12
- >Kit contains 6 leads short, 6 leads long ammeter, voltmeter, circuit board, 3 resistance mounted, 2 cell holders, cell dividers, battery tray pins, Rheostat, connectors, switch, Joule's colorimeter, carbon electrodes, electroscope, rectangular coil, box magnets, coil and coil support and lamp and lamp holders

KMEM006 ELECTRIC MOTOR KIT

- >useful teaching aid for construction of motors
- >Practically demonstratable principles
- >Contains 6 wood bases and mounting screws, 6 magnet holders and 12 magnets, 6 shafts, 6 armatures, 6 reel plastic coated wire, 1 reel plastic tubing



KMEM007 ELECTROMAGNETIC KIT

- >Designed to teach electromagnetism from field Patterns to motor effect and induction
- >Contains magnets, plotting compass, steel core electromagnet, iron core, single strand wire, large rectangular coil, support unit to mount coils, iron fillings and shaker, storage tray with lid



KMEC008 ENERGY CONVERSION KIT

- >Ideal for intermediate and senior phase,
- >Demonstrates all kinds of energy conversion
- >Contains steam engine, dynamo, motor, water head, fly-wheel
- *Includes other accessories

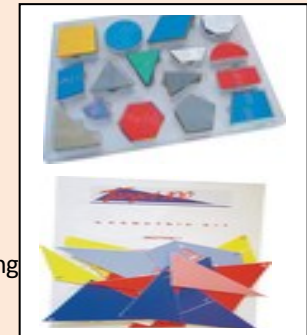


KMFB009 BOARD FORCE WALL KIT

- >Simple apparatus for demonstrating the concept of parallelogram and triangle of forces
- >Bench standing
- >Includes pulleys, mass piece, hooks, cotton, mirror, 3 spring balances

KMGS010 GEOMETRIC SET

- *TEACHER'S PACK includes
- >Large set of magnetized plastic geometry pieces
- >Instruction booklet
- >Suitable for teaching geometry at secondary
- *LEARNER'S KIT
- >Suitable for both individual and group learning
- >Supplied with instruction booklet



KMLO011 LIGHT (OPTICS) KIT

- >Covers the reflection, refraction, color mixing, absorption, focal length measurements, ray optics and introduction to fibre optics
- >Includes ray box that accommodate individual slits, color mixing slides and collimate lens, mirrors, prisms, lenses and liquid trough

KMNS012 LIFE SCIENCES KIT – GRADE 10-12

- > Ideal for OBE & CAPS (Curriculum and Assessment Policy Statement)
- >Contains teacher guide & learner activity sheets with assignments
- >Contains physical, chemistry, biology apparatus
- >Learner participation
- >Grade 11-12 covers FET student curriculum
- >Housed in sturdy trunk





KMSTO013 SOIL TEST LEARNER & PROFESSIONAL

- >The aim of the kit is to provide an indication of the general soil quality of an area of land, using minimum number of tests
- >Tests are quicker and accurate, use colorimetric and turbidity test methods with color charts available for each test
- >Tests covered include Ph, Phosphorous, Nitrate, Nitrogen, Ammonia, Potassium and Calcium
- >Supplied with illustrated manual and step-by-step direction

KMTKO014 TECHNOLOGY KIT

- >Contains range of material for design and make of projects
- >Sufficient components for classes working in groups to build projects and explore basic principles of structure, processing, systems and control
- >Contains gears, pulleys, wheels, bolts/nuts, strips and gussets, angle brackets, wood strip and dowel,
- >Model motorizing kits available as extras



KMVG015 VAN DE GRAAF GENERATOR & ACCESSORIES KIT

- >Contains 1 head of hair
- >1 neon lamp mounted on 60mm long sharpened steel pin
- >1 PVC support with suspended metalized sphere
 - >1 Faraday cup with 4m plug and socket
 - >1 Point discharger
 - >1 Electrostatic whirl
- >1 Perspex cylinder with conducting spheres

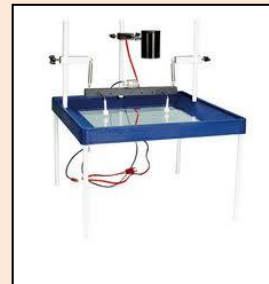


KMMK016 MICROSCOPE KIT

- >Supplied in wooden or plastic box
- >Quality microscope – 40X, 100X, 400X
- >Complete with accessories & manual
- >10 prepared slides, blank slides & cover slips
- >Dissecting kit
- >Stains & equipment for preparation of own slides.

KMSK017 SCIENCE KIT

- > Ideal for OBE & CAPS (Curriculum and Assessment Policy Statement)
- >Covers complete senior secondary curriculum
- >Topics include:
 - *Mechanics
 - *Waves, sound and light
 - *Magnetism, electricity, electromagnetism
 - *Matters and material
- *Contains G12 chemistry apparatus & chemicals
- *Supplied complete with worksheets
- *Contained in lockable cabinet with trays



KMRT018 RIPPLE TANK KIT

- >Includes accessories required to perform investigations into reflection, refraction, diffraction and interference effects
- >Generates straight and circular wave forms
 - >Battery operated ripple control
- >Excellent for class demonstration or small work groups of 10-15
- >Complete with hand held strobodisc
- >Includes light source.

KMRT019 KIT AIR POLLUTION



KMRT020 BLOOD TESTING



KMRT021 CAULIFLOWER CLONING



KMRT022 KIT CHROMATOGRAPHY



KMRT023 DNA MURDER MYSTERY



KMRT024 ENZYME TEACHING



KMRT025 FERMENTATION



KMRT026 KIT MICRIBIOLOGY



KMRT027 KIT OSMOSIS & DIFFUSION



KMRT028 KIT PHOTOSYNTHESIS



KMRT029 KIT PLANT HORMONES



KMRT030 KIT PLANT TISSUE CULTURE



KMRT031 KIT POLLEN GERMINATION



KMRT032 KIT SYMBIOSIS FUNGI & ALGE





KMRT033 WATER POLLUTION – STUDENT



KMRT034 KIT ACID AND BASES



KMRT035 EQUILIBRIUM SHIFTS



KMRT036 KIT HYDROLYSIS OF SALT



KMRT037 KIT LE CHATELIER'S PRINCIPLE

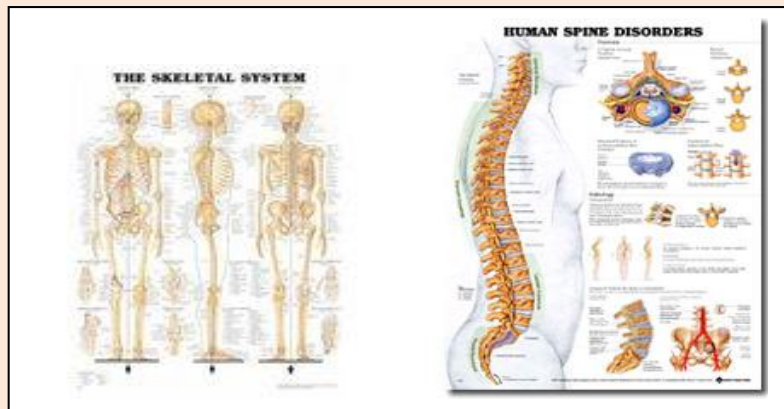


KMRT0038 MOLECULAR ATOMS – JUNIOR



KMRT0039 MOLECULAR ATOMS – SENIOR

LABORATORY CHARTS



| Mathematics charts | Anatomy charts - mention your choice | Chemistry Charts - mention your choice |
|---|---|--|
| Biology charts (mention your choice) | Brain/ Digestive system/ Ear/ Kidneys/ Lung/ | Chemicals standard lab equipment/ atoms/carbon |
| Atoms/molecules | Meiosis/ Mitosis/ Muscles/ Nose, throat, tongue/ | Acids and bases/ Ions common form/ Lab |
| Periodic table | Skeleton, Skin, Spinal chord/ Teeth, Torso | safety/ Lab techniques/ Oxidation & reduction/ |
| Chart periodic table | Chromosomes/ Circulatory system/ DNA/ | Periodic table/ |
| Chart chemistry - lab techniques | Enzymes/ Human body/ Nervous system/ | Physics chart (mention your choice) |
| Chart chemistry - oxidation/reduction | Neurons/ Pelvis female/male/ Pregnancy & | Air/ Current electricity/ Electromagnetism/ |
| Chart chemistry - chemical reactions | birth/ Reflex arch/ RNA/ Vascular system/ | Energy/ Force/ Heat/ Light/ Mass/ Weight/ |
| Alimentary canal/Digestive sys | Biology charts (mention your choice) | Measuring/ Optics/ Sound/ Static electricity/ |
| Heart | Biology Aids/ Algae/ Skin/ Spinal chord/ Teeth | Work |
| Human skeleton chart | Bread mould/ Drug abuse/ Earthworm/ Fern/ | Physics chart (mention your choice) |
| Human skeletal & muscle sys, | Flowers/ Frog/ Fruit/ Germination/ Gymnosperms. | Air in motion/ Current electricity/ magnetism/ |
| Kidney, chemical reactions. Chemical densities, Hydrogen,, Oxygen, Nitrogen | Hydra/ Insects/ Invertebrates/ Butterfly. Mammals | Force/ Matter & measurement/ Static electr./ |
| Brain | Lizards/ Pollination/ Pollution/ Reptiles/ Sea life | Vectors in real life/ Vector: equilibrium/ |
| Reflex arc | Seed formation/ Roots/ Plant cell/ Snail/ Moss/ | Vectors: resultant. |
| Ear | Water/ Wild life animals. | |
| Eye | Biology charts (mention your choice) | Physics flip chart |
| Skin | Adaption of organ/ Ecosystems: food/ Herbivores | DNA |
| Human reproductive - female | Carnivores/ Omnivores/ Microscope introduction/ | Neurons |
| Human reproductive - male | Biology reproduction: growth & development/ | Flowering - Germination |
| Chromosomes | Unwanted plants/ Useful plants/ Water cycle/ | Flowering - flowers |

LABORATORY

FURNITURE



unit supplied as optional extras

LSF001 2-DOOR METAL CANIBET

- >Made from sheet metal
- >Powder coated
- >Sturdy design with lockable doors
- >10 Trays size 400mmX290mmX75mm



LSF002 LAB STOOL

- >For Laboratory and draughting use
- >Tubular steel with comfy plastic seating
- >Sizes: 600mm & 700mm

LSF003 FUME CUPBOARD

- >Simple Wood design for small experiments
- >Can be placed on lab table
- >Perspex panels for all-round viewing
- >Size: 570mmW X470mmD X 670mmH
- >Extraction fan with flexible vending duct



LSF 004 MOBILE UNIT FOR LEARNER

- >Single door unit with melamine finish
- >Two cupboards sections for clean and waste water
- >Gas cylinder situated on top
- >Gas outlet on top of surface
- >Hand-action pump water supply at basin
- >Mobile with lockable castors for stability
- >Size: 600mmX600mmX850mm
- >Lockable doors and removable three-tray



SLF005 MOBILE UNIT FOR TEACHER

- >Double door unit with melamine finish
- >2 cupboards sections for clean & waste water
- >Gas cylinder situated inside shelf
- >Gas outlet on top of surface
- >Hand-action pump for water supply at basin
- >Mobile with lockable castors for stability
- >Size: 1200mmX600mmX850mm
- >Lockable doors and removable three-tray unit supplied as optional extras

SLF006 2-PLACE STEEL STORAGE TROLLEY

- >Dual rack on wheels with 2 jumbo trays
- >Dual rack on wheels with 4 deep trays
- >Dual rack on wheels, 1 jumbo & 2 deep trays



SLF007 3-PLACE STEEL STORAGE TROLLEY

- > Dual rack on wheels with 3 jumbo trays
- >Dual rack on wheels with 6 deep trays
- >Dual rack on wheels, 1 jumbo & 4 deep trays

SLF008 15-PLACE STEEL STORAGE TROLLEY

- >Dual rack on wheels with 6 jumbo trays
- >Dual rack on wheels with 12 deep trays
- >Dual rack on wheels, 2 jumbo & 8 deep trays



SLF009 TRAY

- Ideal for storage of tools, material & equipment
- >Use for group-work
- >For easy issue & return of tools

>Available sizes: *312X427X75mm,
312X427X150mm, 312X427X300mm

GENERAL LABORATORY & GLASSWARE



>Higher voltage also available



GLAB001 ASPIRATOR BOTTLE

- >Graduated, with glass with tap
- >Interchangeable stopper with stopcock
- >Capacity: 2L, 5L, 10L, 20L

GLAB002 ASPIRATOR BOTTLE

- >Polythene, heavy duty
- >Graduated, with plastic tap
- > Interchangeable stopper with stopcock
- >Capacity: 2L, 5L, 10L, 20L, 25L



GLAS003 ASPIRATOR STOPCOCK

- >For use with aspirator bottle
- >Bore: 4mm
- >Cone size: 29/32
- >Overall length: 95mm

GLBC004 BATTERY CHARGER

- >Internal thermal overload switch
- >Double insulation
- >Comes in 6V and 12V



GLBP005 BATTERY PENLIGHT

- >Cylindrical type AA battery
- >Central positive cap, negative barre
- >Leakproof
- >Comes in sizes 14X15mm
- >1.5V



GLBP006 TORCH BATTERY

- >Cylindrical type D battery, 1.5V
- >Central positive cap, negative base
- >Comes in sizes 50X25.2mm

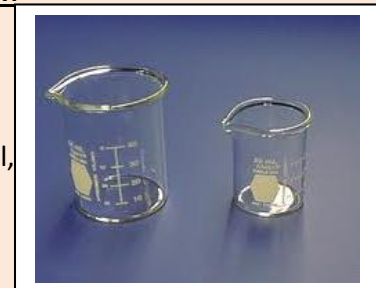


GLGB007 GLASS BOTTLE

- > Borosilicate glass
- > Graduated with screw-on cap
- >Sizes; 100ml, 200ml, 500ml, 1L,

GLGB008 GLASS BEAKER- LOW FORM

- >Borosilicate glass
- >Graduated, with spout
- >Available sizes: 10ml, 25ml, 50ml, 100ml, 250ml, 400ml, 600ml, 1000ml, 2000ml, 3000 & 5000ml
- >Also available in conical shape



GLPB009 PLASTIC BEAKER- LOW FORM

- >Polypropylene, graduated, with spout
- > Sizes: 50ml, 100ml, 250ml, 400ml, 600ml, 1000ml, 2000ml, 3000 & 5000ml



GLGB0010 GLASS BEAKER- TALL FORM

- >Borosilicate glass
- >Graduated, with spout
- >Available sizes: 10ml, 25ml, 50ml, 100ml, 250ml, 400ml, 600ml, 1000ml,



2000ml, 3000 & 5000ml

*Also available in conical shape

GLBH 0011 BEEHIVE SHELVE

- >Made of stoneware
- >Glazed inside and out
- >Use with trough for gas collection
- >Outer size: 75mm and 100mm



GLCB0012 BOAT – COMBUSTION

- >Porcelain, with handle
- >Glazed except for base
- >Dimensions: 88mm X13 X10mm



GLBH0013 BOSSHEAD

- >Made of iron, coated black
- >Used both horizontally and vertically
- >Suitable for rods up to 16mm
- >Also available: die-cast in natural alloy
- >Nickel coated brass tommy screws



GLBD0014 BOTTLE – DROPPING

- >Borosilicate, Bosch or plated glass
- >Clear glass with grooved stopper
- >Sizes: 30ml and 60ml
- >Also available in vinyl teats

GLBT0015 BOTTLE – POLYTHENE

- >Narrow neck, translucent
- >Flexible, with polythene screw caps
- >Sizes: 100ml, 250ml 500ml, 1000ml

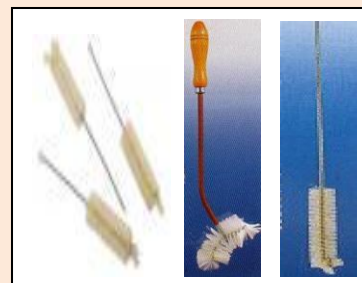


GLRB0016 REAGENT BOTTLE

- >Wide mouth, clear glass
- >Ground-in flat stopper
- >Standard shape
- >Sizes: 100ml, 250ml 500ml, 1000ml
- *Also available in narrow mouth

GLWB0017 WASH BOTTLE

- >Flexible plastic for rapid squeezing
- >Swan neck, round
- >Available in sizes: 250ml, 500ml & 1000ml



GLBB0018 BRUSH- BOTTLE, BURETTE

- >Bristle on galvanized iron wire stem
- >Overall length: 395mm
- >Head size: 140 X 70mm
- Also, Cylinder, Flask & Test Tube

GLLB0019 LAB BURNER

- >Portable with clean, odourless flame
- >High temperature source fuelled by butane
- >Mounted on steel cartridge holder
- >Fitted with cartridge retaining clips
- >Separate refueling cartridge available



GLSBB0020 BUNSEN BURNER - SINGLE

- >Heavy gauge brass with steel base
- >Tube 11mm diameter with air regulation

- >Brass inlet tube 10mm in diameter
- >LP gas



GLBC0021 BURETTE CLAMP

- >High strength casting
- >Plastic jaws
- >Positive spring for easy operation
- >Suitable for burettes up to 100ml

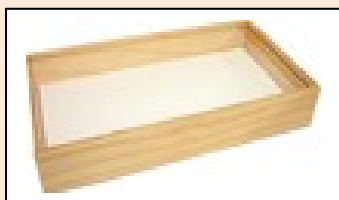
GLBG0022 BURETTE – GLASS

- >Choice of amber and blue graduation
- >PTFE stopcock
- >Moulded screw thread for tension adjustment
- >Sizes: 25ml, 50ml, 100ml
- *Also available in plastic



GLCD0023 DISPLAY CABINET

- >Wooden cabinet
- >Clear Perspex sliding lid
- >Polystyrene base to mount specimen
- >Size: 430 X 235 X 150mm



GLCB0024 CALIPHER – VERNIER

- >Direct reading, stainless steel
- >Dual scale
- >0 – 150mm X0.1mm
- *Also available: Plastic calipher



GLCH0025 BATTERY (CELL) HOLDER

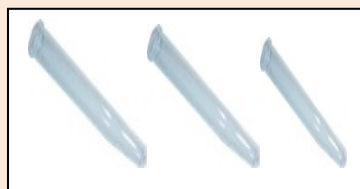
- >Strong plastic, tension screw one end
- >Terminal situated on other end
- >Comes with cell divider and pin



- >Takes 1-4 and 4-8 torch cells

GLHC0026 CENTRIFUGE

- >LED display with speed of 500-16000rpm
- >220V – 50Hz; Weight 12kg
- >Fitted with 8 X 7-8ml tubes
- >Dimensions: 343X400X440mm
- *Also available: hand-held centrifuge



GLCT0027 CENTRIFUGE TUBES

- >Made of soda ash
- >Conical bottom with rim
- >Graduated to 10ml in 0.1ml divisions

GLRC 0028 CLAMPS (VARIOUS)

- >Suitable for articles from 1mm to 75mm
- >Made of die cast aluminum
- >Nickel plated brass tommy screws
- >Rubber covered jaws
- *Also available: Universal with cork-lined jaws
- *Retort, Hoffman, Mohr



GLCC0029 CROCODILE CLIPS WITH LEADS

- >Comes in red or black
- >Insulated crocodile clips on each side
- >Comes in 300mm and 1000mm
- *Available: separate Hoffman, Mohr clips



GLCL0030 CONSENSOR- LIEBIG

- >Suitable for both distillation and reflux
- >Turbulent flow within the water jacket



ensures efficient cooling

> Sizes: 200mm and 400mm

GLTC0031 TUBE CONNECTOR

>Made of glass, both T and Y shapes

>Horizontal limb: 75mm

>Vertical limb: 35mm

>External diameter: 8mm



GLCB0032 CORK BORER

>Made of brass, nickel plated

>Supplied complete with push rod

>Comes in set of 6 and 12



GLBS0033 CORK BORER SHARPENER

>Die-cast in alloy

>Handle of finished stoved enamel

>Hardened steel blade

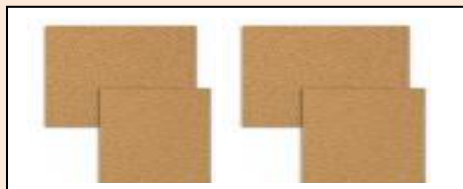


GLCS0034 CORK SHEET

>Best quality, rectangular

>6 mm thick

>Sizes: 300X150mm



GLCW0035 COTTON WOOL

>Non absorbent cotton wool

>White on reel

>Roll of 500g



GLMCS0036 MICROSCOPE COVER SLIP

>Best quality, made of sheet glass

>Thickness: 0.13-0.17mm



>Size: 18X18mm & 22X22mm

>Circular diameter: 16mm

GLPC0037 CRUCIBLE

>Made of porcelain

>Tall and squat form

>Glazed inside and out

>Lids with handles

>Sizes: 25ml and 50ml



GLGC0038 GLASS CUTTER

>Roller type

>Zinc alloy, nickel plated

>For glass tubing

>Tubing up to 30mmØ



GLMC0039 MEASURING CYLINDER

>Made of glass and graduated

>B grade spouted or non-spouted

>Sizes: 5ml, 10ml, 25ml, 50ml, 100ml, 250ml, 500ml, 1000ml, 2000ml, 3000ml

*Also available in plastic



GLMV0040 CYLINDER MEASURING VESSEL

>Made of Perspex

>Designed to show cubic volume of liquid

>Rectangular

>Size: 400ml capacity



GLDS0041 DEFLAGRATING SPOON

>Comes complete with brass fringe



- >Cock stopper made of wood
- >Comes in size 150mm

GLDW0042 DEIONISED WATER APPARATUS

- >Functions as mini demineralizer
- >One way disposable resins
- >>20 and 25l per hour



GLGD0043 DESSICATOR

- >Made of soda ash
- >Lid with glass or plastic knob
- >Complete with discs
- 150mmØ, 200mmØ, 300mmØ

*Also available: stopcock vacuum model

GLPD0044 PETRI DISH - GLASS

- >Made of glass
- >Anumbra
- >Sizes: 60X10mm, 60X12mm, 100X15mm, 120X20mm and 150X25mm



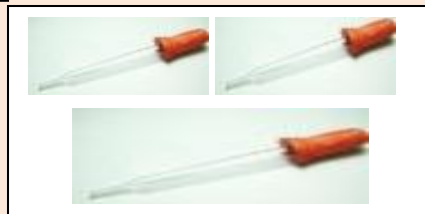
GLPD0045 PLASTIC PETRI DISH

- >Made of plastic
- >Disposable
- >Sizes: 90X15mm and 60X15mm
- >Comes in pack of 10, 20, 100, 500



GLMD0046 MEDICINE DROPPER

- >Straight glass tube
- >Designed with latex teats



- >Length of 90mm
- >Outer diameter of 7-8mm

GLEP0047 ELECTRODE PLATE

- >Copper 15X45X5mm mounted on PVC strip
- >Carbon 100X40X5mm mounted on PVC strip
- >Lead 150X45X1mm mounted on PVC strip
- >Zinc 150X45X1mm mounted on PVC strip

*All electrodes come with connecting terminal



GLER0048 ELECTRODE ROD

- >Copper solid rod 140X6mm with terminal
- >Carbon solid rod 140X6mm with terminal
- >Iron solid rod 140x6mm with terminal
- >Zinc, solid rod 140X6mm with terminal
- >Platinum solid rod 140X6mm w/t terminal

GLEB0049 EVAPORATING BASIN GLASS

- >Made of borosilicate glass
- >Flat bottom with curved sides
- >With spout for easier pouring
- >Size: 90ml X 80Ø X45mm



GLEB0050 EVAPORATING BASIN PORCELAIN

- >Made of porcelain
- >Glazed inside and out
- >Flat bottom with curved sides
- >With spout for easier pouring
- >Size: 100ml X 90mmØ X 35mm



125ml X 98mm \varnothing X 38mm
250ml X 120mm \varnothing X 49mm

GLBF0051 GLASS U-TUBE



- >Borosilicate U tube
- >8-10cm neck
- >Sizes: 250mm, 500mm, 100mm

GLBF0052 ROUND BOTTOM BOILING FLASK

- > Flat bottom, borosilicate
- >5-7cm narrow neck
- >Capacity: 100ml neck size 64mm \varnothing
- > 250ml neck size 85mm \varnothing
- > 500ml neck size 22mm \varnothing



GLDF0053 DEWAR FLASK

- >Cylindrical vacuum flask
- >Comes in shapely plastic container
- >Screw stopper and moulded cup
- >Capacity: 500ml and 1000ml

GLDF0054 DISTILLATION FLASK

- >Made of durable glass
- >Side arm angle of 75° to vertical axis
- >75mm from top of neck to side arm
- >Sizes: 250ml and 500ml



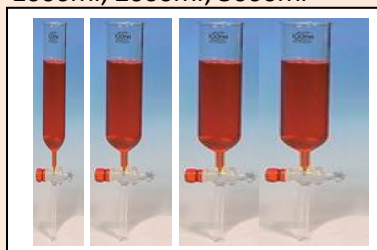
GL EF0055 ERLIENMEYER FLASK

- >Conical shape, borosilicate glass
- >Graduated, narrow and wide neck



GLVF00 56 VOLUMETRIC FLASK

- >B-grade with one volume mark
- >Interchangeable PVC stopper
- >Made of durable glass
- >Sizes: 50ml, 100ml, 250ml, 500ml, 1000ml, 2000ml, 5000ml



GLDF0057 DROPPING FUNNEL

- >Made of durable glass
- >Cylindrical, open top with stopcock
- >Sizes: 50ml, 100ml, 250ml, 500ml

GLFF0058 FUNNEL FILTER & BUCHNER

- >Plain pattern made of moulded glass
- >Angle 60° short stem
- >Sizes: 50mm, 75mm, 100mm & 150mm
- *Also available in plastic



GLSF0059 SEPARATING FNNEL

- >Made of borosilicate glass
- >Conical or pear shape
- >Interchangeable stopper
- >Sizes: 100ml, 250ml, 500ml



GLTF0060 FLASK - BUCHNER

- >Made of soda ash glass
- >Size: 250ml, 500ml, 1L, 2L
- >For use with dilute acids and alkalis

- >For use in suction filtering
- >Side arm 300-500mm

GLGC0061 G-CLAMP

- >Cast iron
- >Sizes: 50mm, 75mm, 100mm 150mm

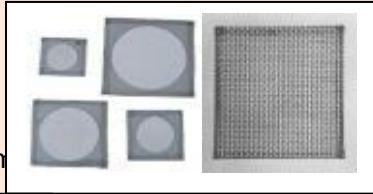


GLGS0062 GAS SRYINGE

- >Made of glass or plastic
- >Gas tight
- >Size: 100ml

GLHG0063 GAUZE

- >Made of stout iron wire
- >Ceramic centre or plain
- >Sizes: 160X160mm and 100X100mm



GLLG0064 LATEX GLOVES

- >Durable examination type
- >Comes in pack of 100
- >Small, medium or large

GLSG0065 SAFETY GOGGLES & SPECS

- >Comes in goggle and spectacle type
- >Ventilated, translucent with PVC moulding
- >Elastic headband to fit all face sizes
- >Spectacle with polycarbonate safety lens
- >Side protection



GLTH0066 TEST TUBE HOLDER

- >Wooden Handle

- >Brass cross action type
- > Fits all tube sizes

GLBH0067 HOTPLATE

- >Enameled metal case with switch
- >Solid plate, mains cable 220V
- >Consumption: 1500W in 6 steps
- >Plate: 145mmØ, mass: 2.2kg
- >Dimensions: 22 X 22 X 8mm
- *Also available: Magnetic stirrer



GLIP0068 INDICATOR PAPER

- >Universal pH paper strips
- >One strip required to test value
- >Pack of 100 and 200, tests ph 1-14
- *Also available: Litmus Blue and Red, Cobalt and glucose



GLGJ0070 GAS JAR WITH LID

- >Footed with ground flange
- >Comes with cover plate
- >Size: 50mmØ X 150mm & 50mmØX200mm



GLJB0069 JAR BELL

- >Durable borosilicate glass
- >Stoppered or with knob
- >150mmØX250mm & 200mmØX300mm



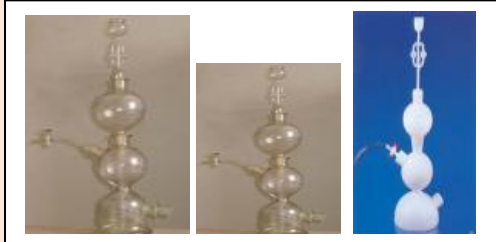
OGLSJ0071 SPECIMEN JAR

- >Rectangular type with lid
- >Sizes 50 X 100 X100mm & 50 X 100 X 200mm
- >Round type with lid

>Sizes: 60 X 150mm, 75/80 X 150mm and
80/90 X 200mm

GLKG0072 KIPPS GLASS APPARATUS

- >Cylindrical base
- >Tubular
- >Interchangeable fittings
- >Rubber centre collar
- >Sizes: 500ml and 1000ml
- *Also available in plastic



GLPK0073 PALLETE KNIFE

- >Stainless steel with wooden handle
- >Parallel sided blade
- >100mm, 150mm, 200mm, 250mm, 300mm



GLKS0074 KNIFE SWITCH

- >Moulded base, low voltage
- >Single pole and double pole double throw
- >Plated spring brass contacts & screws connector
- >Sizes: 88 X 38 X 22mm & 95 X 22 X 22mm



GLEL0075 LAMP

- >Screw type with electric flash
- Comes in 1.5V – 0.3A, 2.5V – 0.3A,
3.8V – 0.3A, & 4.9V – 0.3A



GLLH0076 LAMP HOLDER

- >Suitable for flashlamp bulbs
- >Rolled shell of plated brass
- >Moulded plastic base, 2 screw connectors
- >Base: 30mmØ, Height: 22mm



GLEL0077 LEAD PLAIN WIRE

- >Red or black
- >Priced per meter

GLGL0078 GAS LIGHTER

- >Spring steel holder
- >Flint with striking plate
- >Supplied with one flint



GLMM0079 MICROMETER

- >Screw gauge & thimble with ratchet
- >Made with hardened and ground screw
- >Lever lock to spindle
- >Frame fitted with insulating cover
- >Satin chrome overall
- >Range 0 – 25 X 0.01 precision



GLMP0080 MOTAR & PISTLE

- >Porcelain, glazed in and unglazed out
- >Comes complete with pestle
- >Sizes: 60mmØ, 80mmØ, 100mmØ & 130mmØ
- *Also available in glass



GLEM0081 MULTIMETER

- >Range Selection by single knob
- >Dual range, black pointer, selection, test leads
- >Batteries included
- Ranges: 10A – 10A 5 ranges, 0.1V, 1Kv 9 ranges



10A – 1 range, 10V – 1Kv 58 ranges,
X1, x100, 10K, 20K/V

GLOP0082 OVERHEAD PROJECTOR & SLIDES



- >Both portable and bench models
- >Working area: 250X250mm & 285X285mm
- >Focal: 280 – 340mm
- >Two lamps, 24V, 250W

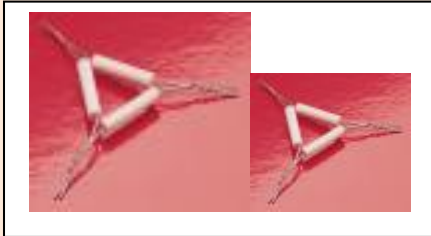
GLFP0083 FILTER PAPER

- >General purposes filter
- >Medium filtering speed
- >thickness: app 0.17mm
- >Diameter: 10cm, 12.5cm, 15cm, 18cm
- >Pack sizes: 100



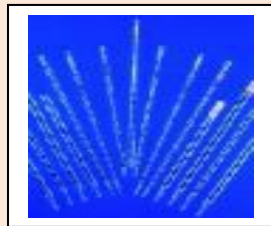
GLPT0084 PIPE CLAY TRIANGLE

- >Built on stout iron wire
- >Pipe clay stems
- >Each or in packs of 10
- >Sizes: 50mm & 65mm



GLPG0085 GRADUATED PIPETTE

- >Glass, graduated
- >For delivery to jet
- >Zero mark at top
- >Sizes: 1ml, 2ml, 5ml, 10ml 25ml, 50ml



GLPS0086 PLASTICINE

- >Available in pack of 500g
- >Comes in assorted colours

GLBP0087 BANANA PLUG

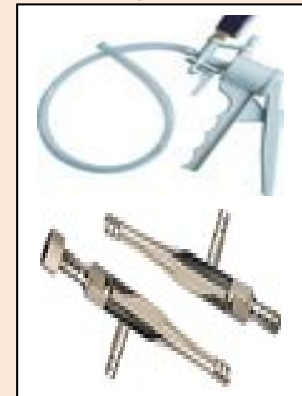
- >Comes in red, black, yellow and green for 4mm socket



- GLPT0088 PNEUMATIC TROUGH**
- >Made of glass
 - >Circular shape
 - >150X100mm, 250X125mm, 300X125mm

GLVP0089 VACUUM PUMP

- >Hand operated, with spring loaded valve
- >Vacuum of 635mmHg
- >Removable cover on exhaust port
- >Gauge monitors vacuum in cm
- >Nozzle fits standard ¼ in. d tubing
- >Supplied with 2ft length of clear tubing
- >Lightweight, sealed and self-lubricating

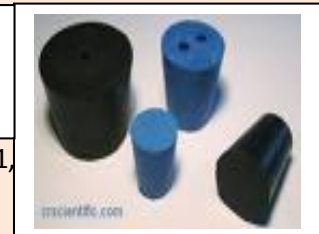


GLTR0090 TEST TUBE RACK

- >Durable plastic or wood
- >6X16mm holes with pegs
- >6X26mm holes with pegs
- >12X26mm holes with pegs

GLRS0091 RUBBER STOPPER

- >Natural solid rubber
- >1-hole and 2-holes
- >Available in sizes: 3, 4, 5, 6, 7, 8, 9, 10, 11,



13, 15, 17, 19, 21, 23, 25, 27, 29, 31, 33, 35,
37, 39, 41, 43, 45, 49, 53

GLMR0092 MEASURING RULER

- >Hardwood, plastic or stainless steel
- >Graduated in centimeters and millimeters
- >Length of one meter long
- *Also available half a meter long



GLSC0093 SPATULA – CHATTAWAY

- >One end flat and one end bent-up
- >Made from polished stainless steel
- >Sizes: 150mm and 200mm

GLSS0094 SPATULA SPOON TYPE

- >One end flat
- >One end forms spoon shape/form
- >Made from polished stainless steel
- >Sizes: 150mm and 200mm



GLSB0095 BURETTE & RETORT STAND

- >Made of hardwood or iron rod
- >Plated steel base 20x13 with stand rod
- >Clamping jaw fitted with tightening screw
- >To take double burette clamp

GL0096 PIPETTE STAND

- >Made of polypropylene
- >Round and base with PVC rod
- >Contains 18 small holes and 10 large holes
- *Available in different colors



*Also available: horizontal stand



GLSW0097 WATER STILL

- >Borosilicate glass boiler
- >Fitted with 3KW chromium plated heater
- >Thermostatic cut-out
- >Output: 4l per hour, distillate pyrogen-free
- >Conductivity: 1.5-2.0 s/cm
- >Dimensions: 500 X 150 X450mm

GLSS0098 STOP WATCH

- >6-digit display of H/M/S,
- >Displays month, date & week
- >1/100th second split operation
- >Automatic month update
- >Lower power dissipation

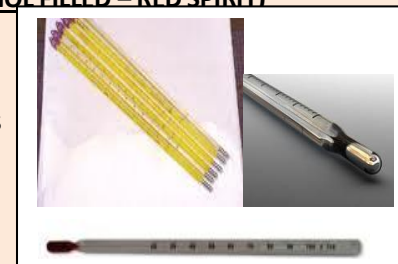


GLLS0099 LABORATORY SYRINGE

- >Plastic and disposable
- >Suitable for liquids and gases
- >Needles optional extras
- >Sizes: 5ml, 10ml, 20ml, 50ml
- *Needles optional

GLTR0100 THERMOMETER (ALCOHOL FILLED – RED SPIRIT)

- >Length: 300mm X6mmØ
- >76mm immersion
- >White enameled back with scales
- >Capacity: -10-110°C
- >-10/20-110°C

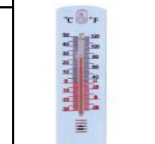


*Also available: general clinical type

GLTMS00101 THERMOMETER – MERCURY

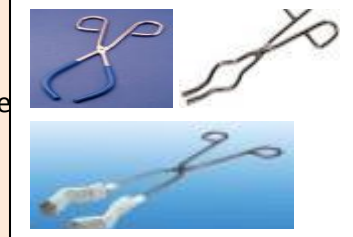


- > Length: 300mm X6mmØ
- >76mm immersion mercury in glass
- >White enameled back with scales
- >Capacity: -10-110°C
- >-10-150°C, -110-200°C
- Also: general wall type



GLTC00102 TONG – CRUCIBLE, FLASK

- >Made of black or galvanized steel
- >Flattened hinge, straight and bow type
- >Sizes: 200mm
- *Also available in stainless steel



GLTS00103 TRIPOD STAND

- >High grade metal of cast iron
- >Circular or triangular top
- >Sprayed steel legs, mat black finish
- >Sizes: 65 X 100mm with rings
125 X 100mm

GLLT00104 LABORATORY TROLLEY

- >Sturdily built with large castors
- >Two or three shelves
- >Sizes: 1000H X 460W X 8410mmL



GLTT00105 TEST TUBE

- >Light wall, with or without rim
- >Neutral or borosilicate glass

- >Sizes: 16X125, 16X150, 18X150,
24X150, 30X200 X 37X200

GLTP00106 TUBING PLASTIC

- >Made of non toxic PVC
 - >Elastic and flexible
 - >Can be sterilized up to 125°C
- | >INTERNAL | WALL THICKNESS |
|-----------|----------------|
| 3.0mm | 0.75mm |
| 5.0mm | 1.5mm |
| 6.5mm | 1.5mm |
| 8.0mm | 2.0mm |
| 10mm | 2.0mm |
| 12.5mm | 2.25mm |



GLRT00107 RUBBER TUBING

- >Red rubber, red tubing
- >For pressure and vacuum work
- >For burner and other lab uses
- >Sizes: 5mm bore X 1.5mm wall
6.5mm bore X 1.5mm
10mm bore X 2.0mm



GLVV00108 VOLTMETER

- >Hoffmans, two limbs
- >Graduated glass 50ml
- >Carbon and platinum electrodes
- >All accessories included
- >Supplied in safe packaging

GLWG00109 WATCH GLASS

- >Soda ash, round bottom
- >Sizes: 60mm, 70mm, 80mm, 100mm
- >Comes in packs of 10, 100 or 500



GLWB00110 WATER BATH

- >Made from stainless steel
- >Electric, gas or steam heated
- >Element fitted with strong metal collar
- >Thermostat and controls housed on top
- >Comes in sizes of 20l, 50l and 100l

GLWC00111 WIRE ELECTRIC - CONSTATAN

- >Made from bare copper and nickel alloy
- >125g mass reel
- >Sizes: 0.40mmØ, 0.56mmØ, 0.9mmØ



GLWF00112 WIRE ELECTRIC – FLEXIBLE

- >Single line, multi-strand copper
- >PVC insulated, red and black
- >To carry 5A
- >Supplied in meters

GLWN00113 WIRE ELECTRIC NICHROME

- >Bare nickel-chromium-iron alloy
- >Supplied on reel
- >Sizes: 0.31mmØ & 0.56mmØ, 0.60mmØ



0.80mmØ
1.25mmØ



MICROSCOPES



MICB001 BIO MICROSCOPE

- >Model XSJ
- >Heavy substantial base
- >Dimensions: 240 X 90 70mm
- >Glass stage illuminated using mirror @45°
- >Cutaway angle sides to form hand rest
- >Two removable lenses X10 & X20

MICB002 DISSECTING MICROSCOPE

- >X20 magnification
- >WF10x Eyepiece
- >White or black plate
- >No illumination



MICB003 BINOCULAR MICROSCOPE

- >20X Linier magnification
- >Black and white stage plate
- >Solid pillar stand
- >No illumination

MICB004 ADVANCED BINOCULAR MICROSCOPE

- >10X & 20X magnification or 20X & 40X magnification
- >Solid pillar stand
- >Top and bottom illumination



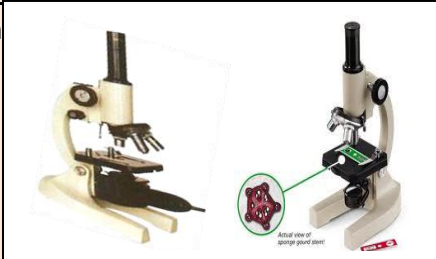
MICB005 ZOOM STEREO MICROSCOPE

- >Binocular head
- >Wf10X paired eyepieces
- >Zoom objective 75X – 45X

- >Magnification 75X – 45X
- >Top and bottom light 6V – 20W

MICB006 MONOCULAR MICROSCOPE

- >Suitable for junior application
- >40X – 400X magnification
- >Coarse focus
- >Mirror illumination
- >10X eyepiece



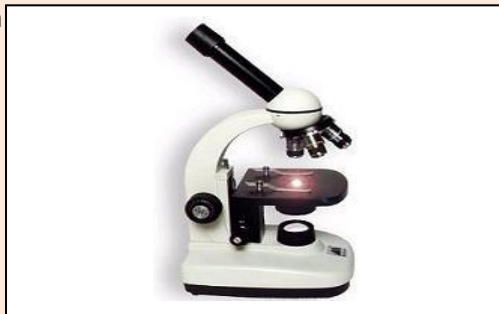
MICB007 MONOCULAR MICROSCOPE

- >40X – 400X magnification
- >0.65 condenser or disc type
- >Iris diaphragm, mirror illuminated
- >Coarse and fine focus
- >Anti-crash device



MICB008 MONOCULAR MICROSCOPE

- >40X – 400X magnification
- >1.25 Abbe condenser
- >Built-in illuminator
- >Coarse and fine focus
- >Anti-crash device
- >4/10/40X objective



MICB009 ADVANCED BINOCULAR MICROSCOPE

- >40X – 1000X magnification
- >1.25 Abbe condenser
- >Mechanical stage, Iris diaphragm
- >Coaxial coarse and fine focus



- >20W halogen illumination
- >4/10/40/100X objective

MICB0010 DIGITAL MICROSCOPE CAMERA – DMC35

- >Projects microscope images on a PC screen
- >Uses USB cable to communicate with PC
- >Software included
- >Adapter included to fit most microscopes



MICB0011 DIGITAL MICROSCOPE VIDEO CAMERA – DMVC35

- >Projects microscope images on a PC screen
- >Uses USB cable to communicate with PC
- >Software included
- >Adapter included to fit most microscopes



MICB0012 PROJECTION MICROSCOPE

- >Projector model X-1000-1
- >150w quarts iodine lamp
- >Fan used for cooling – cooler Environment for live specimen
- >Parfocal objective: 16mm yellow
10mm green
6.5mm red
- >Rack and pinion focusing
- >10X eyepiece, 5XWF lens
- >Polarized set in revolving dustproof turret
- >Built-in phosphate heat filter
- >Stage clips & plastic dust cover



MICB0013 VIDEOFLEX

- >Plugs into TV to show object close
- >Can link to eyepiece of microscope



- >1 – 40X magnification
- >Solid pillar stand, top illumination

NATURAL SCIENCES



NAAP001 AIR APPARATUS

- >Used to demonstrate convection
- >Painted metal box, sliding glass front
- >2 detachable glass chimneys
- >Chimneys mounted in glass box
- >Size: box 220 X 150 X 100mm

NAAP002 LINEAR AIR TRACK

- >Strong aluminium square tubing
- >Large catapult arm, 2 rows of fine holes
- >Air inlet tube connection fitted at one end
- >Wide bore air hose, 1.7m long
- >Track supported by 2 vertical members with adjustable feet
- >Track: Square section aluminium: 48X48mm
- Wall thickness: 2mm; Hole: 1.5mm
- Overall length: 2m; Spacing of holes: 20mm
- >Normal height, centre line above bench: 100mm



Air Blower



NSAM003 AMMETER – AC DUAL RANGE

- >Mounted in either metal or plastic case
- >Easy reading angle
- >Moving coil type, colour coded
- >Single range: 0-5A & 0-10A
- >Double range: 0-1A & 0-5A

NSAM004 AMMETER – AC TRIPLE RANGE

- >Same as Dual Range
- >Single scale: 0-1A OR 0-5A OR 0-10A



- >Dual scale: 0-500Ma OR 0-5A
- >Triple scale: 0-50Ma or 0-500mA OR 0-5A

NSAR005AMPLIFIER – AUDIO

- >Versatile model AA1
- >For general purpose
- >Mains operated
- >Magnetic pick-up: 2.5Mv



NSAB006 ANEROID BAROMETER

- >Supplied with 95mm dial discs
- >In plastic casing
- >Demonstration type
- >On wooden backing

NSAC007 APPARATUS – ORGANIC CHEMISTRY

- >Ground glass angle joint set
- >Based on 19/26 joint set
- >Has storage tray &filtration apparatus
- >Ideal for distillation, filtration & boiling

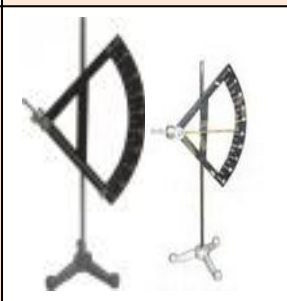


NSAQ008 AQUARIUM

- >Made of glass
- >Rectangular tank
- >31liter capacity
- Size: 200 X150 X150mm

NSAM009 AUXONOMETER

- >Simple pattern
- >Light round section metal pointer
- >Rectangular scale, fitted with bosses
- >Pointer gives X5 magnification



- >Each graduation represents 1mm growth
- >Lever: 450mm; Scale:250X80mm

NSBS0010 BALANCE SPRING

- >Newton spring balance
- >Handle and load hook
- >Comes with zero adjuster
- >Metal and plastic scales: 1N, 3N, 5N , 10N, 15N, 20N, 50N



NSBR0011 BALL & RING APPARATUS

- >Brass ball secured to mounted brass ring by chain
- >Ring mounted to rod with wooden handle
- >Sphere: 22mmØ
- >Ring: 32mm outsideØ
- >Overall length: 210mm

NSBP0012 BALLOON

- >Shows air expansion when placed in vessel
- >Suitable for air evacuation & pressure tests
- >Supplied in pack of 10 or 20



NSBC0013 BAR COMPOUND

- >Bi-metallic, strip of iron
- >Also in strip of copper
- >Riveted together
- >Fitted handle
- >Strip: 200 X 25 X 1mm

NSBE0014 BELL – ELECTRIC

- >Single coil
- >For battery operation



- >Plated bell
- >6-12C DC



NSBV0015 JAR BELL – IN VACUUM

- >Fitted in bell jar on metal plate
- >Air outlet for a vacuum pump
- >Two terminals for electric connection
- >6-8V DC electric bell



NSBD0016 BICYCLE DYNAMO

- >Plastic model
- >Gear driven with hand crank
- >MES lamp holder
- >1.25V lamp
- *Also available Economy type



NSBS0017 BIOSET

- >Strip of 8 micrographs
- >Supplied with text folder to explain item
- >For use with a bioviewer
- >Range of titles available

NSBV0018 BIOVIEWER/SLIDE VIEWER

- >Made of tough styrene
- >White reflector provides light
- >Adjustable eyepiece
- >Fine quality lens



NSBP0019 BLOWPIPE & CARBON BLOCKS

- >Constructed in copper and nickel plated
- >Replaceable jet

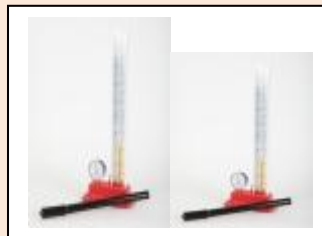


- >Length: 200mm

- >Comes without mouth piece

NSBL0020 BOYLE'S LAW APPARATUS

- >Mounted vertically on scale
- >Calibrated dial – Bourdon gauge
- >Sizes: 0-250kPa
0-400kPa



NSCJ0021 CALORIMETER & JOULES

- >Made of polystyrene case with Perspex lid
- >Pair of terminals
- >Fitted heating coil
- >For Joules experiment



NSCA0022 CAPILLARY APPARATUS

- >6 glass capillary tubes, ends ground flat
- >Bores ranging from 0.5mm to 2.3mm
- >Comes with supporting frame
- >Shallow metal trough
- >Capillary tubes: app 120mm long



NSEC0023 ELECTROLYTIC CELL/ELECTROLYSYS

- >Cylindrical Perspex vessel
- >2 Perspex lids with 2 contact sockets
- >One lid with 2 carbon electrodes
- >One lid with copper and zinc electrodes
- >Vessel 70mm high X 60mmØ



NSCB0024 CLOTH BUNDLE

- >For static electricity investigation

- >Available in flannel and carbon
- >App 200 X 200mm

NSCL0025 CHARLES LAW APPPARATUS

- >Jolly's apparatus mounted on base
- >Boxwood scale graduated in mm
- >Glass air reservoir with vertical clamping rod
- >Spring clips secure reservoir
- >Mercury leveling tube with open end
- >Scale: 600m long; Reservoir: 200mm long
- >Bulb: app 65mmØ



NSCB0026 CIRCUIT BOARD – WORCESTER

- >Board, 12 pins to hold circuit components
- >Clips to hold three torch cells
- >Three bulb holders and three bulbs
- >5 Connectors, 3 mounted resistors, 1 switch
- >4 resistance boards: 1X0.4 Nichrome, 1X0.4 Copper; 1x 0.2 Nichrome; 1x0.2 eureka



NSCT0027 CLINOSTAT

- >Cork Table; rotation: 4xp/h
- >Perspex cover for cork table
- >Supplied with 1.5m core cable
- >Fitted with 3-pin 15A plug
- >Volatage: 200vac; Height: 250mm
- >Cork disc: 85mm; Perspex cover: 110 X 100mm



NSCA0028 COLLISION APPARATUS

- >Sloped wooden runaway attached to base
- >25mm long; 100mm high
- >8mm wide groove
- >Subject sphere support adjustable



- >Plumb bob for making plumb line
- >Two steel spheres of 16mmØ

NSCV0029 COMMUNICATION VESSEL

- >4 glass tubes of different shapes
- >Cross-sec area projecting vertically
- From a common horizontal tube
- >Tubes mounted on PVC base



NSPC0030 PLOTTING COMPASS

- >Dial marked with principal points of compass
- >Needle pivoted b/t top & bottom glass plates
- >Also available without dial



NSPC0031 POCKET COMPASS

- >Needle enclosed in rotational housing
- >Clockwise 0-360° scale
- >North/South index



NSCA0032 CONDUCTIVITY APPARATUS - INGENHAUZ

- Demonstrates thermal conductivity in various metals
- >Rectangular vessel with 5 metal rods
- >Aluminium, brass, copper, iron, lead, zinc
- >Rods size 150X6mm



NSCA0033 CONDUCTIVITY APPARATUS – THERMAL

- >Shows differences in thermal conductivity
- >Strips of copper, iron, aluminium, brass
- >Hollow of wax; mounted on wooden ring
- >Strips 80 X 20 X 2mm



NSCR0034 CROOK'S RADIOMETER

- >Demonstration radiometer



>Spins up to 2900rpm from heat of sun

NSCL0035 CUBE – LESLIE'S

- >Tinplate box
- >100mm sides; 15mm opening
- >1 side polished; 1 side dull finish
- >1 side black; 1 side white



NSCM0036 CUBE METAL

- >For density investigation and calorimetry
- >Assorted, with set of 7 or 8
- >Comes in 10mm and 20mm side
- >Brass, lead, iron, copper, aluminium, zinc, tin
- *Also available in wood



NSDM0037 DEMONSTRATION METER

- >High grade moving coil galvanometer
- >Hardwood case with glass panels
- >Marked on both sides
- >Two 4mm socket terminals
- >Zero adjustment; 325 X 315mm high



NSDT0038 DEMOUNTABLE TRANSFORMER

- >Guarantees safety in operation
- >Complete solution for teaching transformer theory
- >Simple operation, low maintenance
- >Complete with full range of accessories



NSDG0039 DIFFRACTION GRATINGS

- >Card mount: $\pm 90 \times 40$ mm
- >Three apertures: 16×9 mm



- >Gratings: 100 lines/mm
- >300 lines/mm & 600 lines/mm



NSDD0041 DISSECTING DISH

- >Made of stainless steel with rim
- >Length: 286mm
- >Width: 229mm
- >Depth: 44mm



NSDB0040 DISSECTING BOARD

- >Made OF cork face wood
- >175 X 80mm



NSDS0042 DISSECTING SET

- >Supplied in PVC pouch with zip-up front
- >Set comprises of: 1 scalpel handle no 3; 3 scalpel blades no 11; 1 needle with eye; 1 seeker; 1 blunt forceps 130mm; 1 sharp forceps 112mm; 1 fine scissor, 115mm; 1 blunt scissor 130mm.

NSEF0043 ELECTRIC FIELD APPARATUS

- >One pair of pointed electrodes
- >One pair of parallel electrodes
- >One plastic petri dish
- >Two terminals to accommodate electrodes
- >Transparent PVC base on 4 rubber feet & 2 4mm socket



NSEM0044 ELECTROMAGNET

- >U-shape core
- >Coils insulated 0.71mm copper wire

- >With armature and hook
- >Maximum voltage: 3V

NSES0045 ELECTROSCOPE – FLASK & BOX TYPE



- >100ml conical flask variety
- >Brass rod
- >Disc supported in cork
- >Polythene inset
- >Height: 200mm

NSES0046 ELECTROSCOPE

- >Projection type with stable base
- >Metal case size: 100mm
- >Two parallel removable windows
- >Height: 200mm



NSECP0047 ELECTROSTATIC CAPACITATOR PLATES



- >Robust and adjustable
- >Can use on OHP
- >Pith ball coated with graphite on cotton thread
- >Disc: 115mmØ
- >Base: 160 X 160mm; Total height: 120mm

NSEM0048 pH METER – DIGITAL & HANDHELD

- >Measures Ph in solutions
- >Electronic & battery
- >pH of 0 – 14
- >Alkali, neutral & acids



NSFB0049 FALLING BODIES APPARATUS

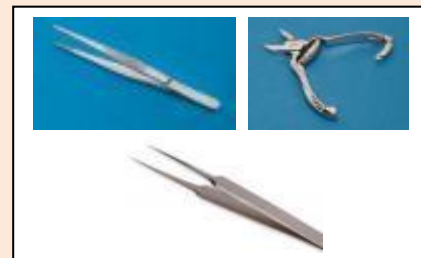
- >Traditional robust construction



- >Clear demonstration of projectile motion
- >Comes complete with 2 spheres

NSFC0050 FORCEP COVER SLIP

- >Nickel plated
- >Size: 150mm



NSFD0051 DISSECTING FORCEP

- >Blunt end with narrow flutes
- >Without guide pin
- >Made from stainless steel
- >Size: 115mm
- *Available: Sharp dissecting type



NSTF0052 TUNING FORK

- >Made of quality steel
- >Prong length: 85-120mm
- >Frequency Hz: 256c1 and 512c2

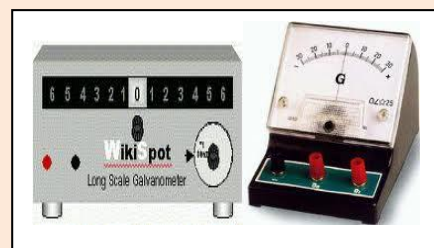
NSFF0053 GRAVITY FREE FALL APPARATUS

- >Fall apparatus to determine “g”
- >6V solenoid supported by 8mm rod
- >Steel sphere with target switch
- >Works with timer Nt3 (Optional extra)



NSGV0054 GALVANOMETER

- >35-0-35Mv
- >Moving coil
- >Colour coded 4mm socket terminal
- >Zero adjustment scale
- >Sensitivity: $\pm 200\mu\text{a}/\text{division}$



>Set in plastic case 100 X 90 100mm

NSGF0055 GENERATOR FUNCTION

- >Frequency range: 1Hz-100KHz
- >Output 0-5V peak to peak
- >Generates sine, square and triangular waves
- >Power available at output 5W into 4ohms
- >Compatible with loud speaker



NSGV0056 GENERATOR – VAN DE GRAAF

- >Electric motor 220V
- >Rubber belt enclosed in PVC tube
- >Large aluminium dome
- >With discharge sphere and earthing socket
- >Produces large sparks
- >Comes with a range of accessories (Optional)



NSGVA0057 VAN DE GRAAF ACCESSORIES ONLY

- >Enables many electrostatic experiments to be performed effectively
- >Simple to use, low cost
- >Fitted with 4mm plug, to fit on top dome
- >Enhances the value of generator



NSHM0058 HYDROMETER

- >Used for testing battery electrolyte
- >Range: 1.10/1.100sp.gr
- >Made of glass or plastic
- >Length: 178mm



NSIN0059 FISH & INSECT NET

- >Quality gauze net



- >Size: 300mmØ
- >On short handle for easier use

NSIC0060 INDUCTION COIL

- >Heavy duty
- >Mounted on plastic base 225 X 100m
- >Demonstrates various factors affecting induction between two coils
- >Specs: Inner coil: 120 turns 32mmØ
Outer coil: 1500 turns 50mmØ
Iron core: 200mm length X 10mmØ
Connection via banana sockets



NSCJ0061 COPLIN JAR

- >Glass jar
- >Moulded glass cover
- >Takes 10 slides (76X26mm)

NSSJ0062 STAINING JAR

- >Sciefferdecker
- >Comes with a cover
- >Takes 20 microslides



NSKM0063 KINETIC MODEL

- >Represents molecules in motion
- >Fitted with clear Perspex tube
- >Freely sliding polystyrene piston mounted on a housing
- >Coupled to crank-driven agitator
- >Two 4mm sockets to connect to 6V power
- >Supplied with 100 small bearings



- >Tube size: 200 X 50mm
- >Housing: 150 X 90 X 50mm

NSLC0064 CONVEX LENS

- >Made of glass, spherical
- >Double convex
- >Size: 50mmØ

- >Focal lengths: 50mm; 100mm; 150mm
- *Also available: Concave shape: 38mmØ



>Comes in pairs

NSMH0069 MAGNET – HORSESHOE

- >6% chrome steel
- >Size: 75mm
- >Length: 100mm



NSLH0065 LENS HOLDER

- >Takes lenses up to 76mm
- >Upright 100mm high
- >V-shaped slot
- >Mounted on rectangular base



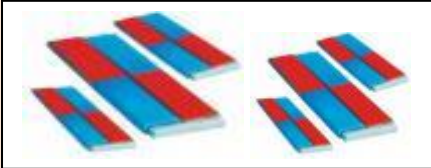
NSMH0070 MAGNIFIER – HAND & ILLUMINATED



- >Oblong: Magnification: 2.5X
Size : 54X41mm
- >Round: Magnification : 2.5X
Size : 60/65mmØ
- >Desk type: With light source
Size : 7.5X6mm
Magnification : 4X

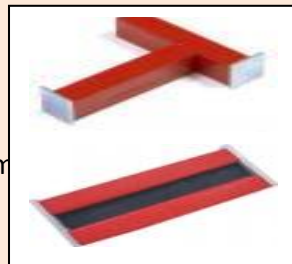
NSMB0066 MAGNET BAR TYPE

- >6% Chrome steel
- >Comes in pairs with keepers
- >Sizes: 75mm; 100mm; 150mm



NSMA0067 MAGNET BAR – ALINCO

- >Made of alnico and better quality
- >Better holding power
- 40X12.5X 5mm; 50X15X5mm; 75X15X10mm
- 100 X 15 X 10mm; 150 X 12 X 10mm



NSMP0071 MAGNIFIER – POCKET

- >Double glass
- >Lens ±19mmØ
- >In plastic mount and plastic case
- >Magnification10X



NSMC0068 MAGNET – U-SHAPE & CYLINDRICAL

- >Made of cobalt
- >Size: 76X6mm
- >Red chromed



NSMM0072 MANOMETER

- >For pressure or vacuum measurements
- >Plastic tube on white backplate with scales
- >Backplate mounted on base plate
- >Suitable for connection to 6.5mm bore flex tube



>Adjustable centre scale

NSMP0073 MASS PIECES

- >Slotted, round or ringed
- >Weights 10g; 20g; 30g; 40g; 60g; 80g; 100g, 200g, 500g, 1kg, 2kg



NSMD0074 METER – DEMONSTRATION (AMPS & VOLTS)



- >Unique design for teacher demonstration
 - >Digital, large LED display
- >Switch between A/V without reconnection
 - >Sensitive monitoring, AC/DC.
- >Doesn't affect characteristics of test circuit

NSMS0075 MICROSCOPE SLIDES 76X26mm

- >Plain cut edge pack of 50
- >Plain ground edge pack of 50
- >Frosted cut edge pack of 50
- >Frosted ground edge pack /50



NSSB0076 MICROSCOPE SLIDE BOX

- >Comes in wooden frame
- >Stores microslides size 76X26mm
- >Metal hinges and clasp
- >Numbered slots with printed index cover
- >Size: 270X190X35mm for 50 pieces



NSMT0077 MICROTOME

- >Wide flat top guides sectioning razor for protection
- >Flat screw has 1mmpitch & wide milled flange
- >Comes without razor



- >70mmØ cutting table
- >16mm central well

NSMP0077 MIRROR PLAIN

- >Surface Aluminised plane glass plate
- >Surface film of high reflectivity
- >Surface hard and durable
- >Unmounted
- >Sizes: 75X25mm; 100X75mm



Mounted in hardwood or plastic handle – 80mm



NSDN0078 DISSCETING NEEDLE

- >Made of sharpened steel
- >120mm length
- >Option of straight or bent

NSMN0079 MAGNETIC NEEDLE

- >Steel needle
- >Brass bearing
- >Size ±75m



NSOB0080 OPTICAL BENCH MODEL

- >2 Adjustable support; 1 candle holder
- >1 White screen; Lamp: 12V 10W
- Aluminium slide calibrated 1500mm long
- >5 lenses with lens holders:
 - 4 convex lenses FL: 50, 100,150, 200mm
 - 1 concave lens, FL: 100mm
- >6 saddles; 2 shutter slides; 1 slide holder;
- 1 arrow slide; 1 4-hole slide; 1 Mercedes slide
- 1 multi slit; 1 single slit; 1 slide with convex lens;



1 prism support with protractor



NSOC0081 OSCILLOSCOPE

- >Portable dual channel
- >DC to 20mHZ, 1mV/div
- >Single time base with delayed sweep
- >Advanced trigger system
- >hf/lf reject triggerfilter
- >Component test function

>Open end of tube graduated in mm

>Mounted on wooden base by spring clamps

NSPG0086 POTOMETER – FARMER’S

- >Measures uptake of water by cut-shoot
- >Central reservoir with 3-hole rubber stopper
- >Holds capillary tube
- >Graduated in mm
- >Funnel with stopcock
- >Short length of 10mm tubing



NSOS0082 OSCILLOSCOPE SINGLE

- >Single
- >3" 5mHz
- >With marker system



NSOA0083 OSMOSIS APPARTUS

- >Length of visking tubing mounted on 2 stoppers
- >With a length of capillary tube
- >Comes without a stand



NSPS0087 POWER SUPPLY EP124

- >Size: 170X150X140mm
- >Input: 220-250V AC50Hz
- >Output: 2, 4, 6.8, 10 and 10V
- >AC selectable with DC output
- >No smoothing at 4A



NSPS0088 POWER SUPPLY

- >Size: 305X220X140mm
- >Input: 330-250V AC 50Hz
- >Output: 0-5Kv DC 2Am
- >(Smoothed) adjustable current
- >Limited to 2Am tap 1 current
- >Limited to 100Am tap 2
- >12V AC3A; 6.3V AC 2A
- >Panel meter: 0-500V DC



*Other sizes available upon request

NSPM0084 POTOMETER

- >For the investigation of uptake of water & transpiration of cut shoot
- >Easy for learner use and portable
- >Can e submerged in a basin of water
- >Self standing
- >Syringe control



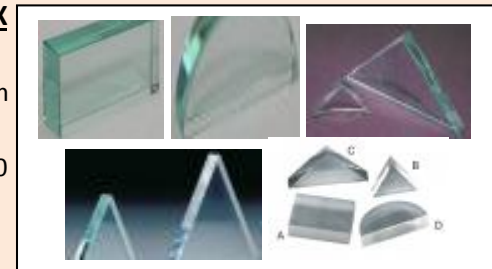
NSPF0085 POTOMETER – GANONG’S

- >Demonstrate transpiration of water & absorption rate by cut-shoot under various external conditions



NSPP0089 PRISM PERSPEX

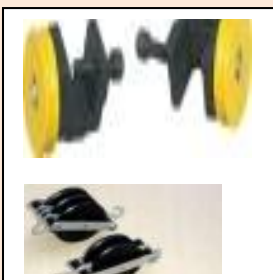
- >Polished. Shapes:
- > Rectangular : 50X75X20mm
- Equilateral : 50X20mm
- isosceles : 70X70X95X20
- Semi-circular: 75mmØ



*Enquire about sizes not listed

NSPF0090 PULLEY

- >Plastic, designed to run on ball bearings
- >Mounted on a metal frame
- >Single pulley on 8mm rod with hook
- >Double pulley in tandem with 2 hooks
- >Triple pulley design with two hooks



NSPF0091 PULLEY – FORCE BOARD

- >Plastic Pulley for user with force board
- >Ball bearings dynamically run in
- >Moulded clamp for mounting on pulley rod
- >Mounted on a metal frame



NSRB0092 LIGHT RAY BOX

- >Fitted with 12V Festoon lamp
- >Supplied with collimator lens
- >On and off switch
- >Has single, double and triple wide slits
- >Triple colour filter slide and colour filters



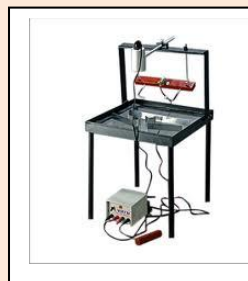
NSRT0093 RHEOSTAT

- >Resistance wire wound on an insulating, heat resistant tube
- >Supported by cast-metal end cheeks
- >Three 4mm socket terminals
- >Sliding contact; maximum current: 5A
- >Tube size: 200X38mm; Resistance: 10ohm
- >Dimensions: 255 X 52 X 95mm high



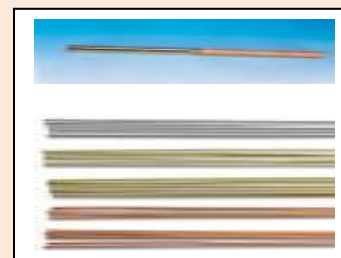
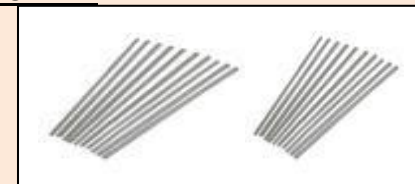
NSRT0094 RIPPLE TANK

- >All needed to perform investigations into reflection, refraction and interference
- >Perspex base
- >Plastic surround sloped to absorb wave reflection from slides
- >Complete with legs, lamp support and lamp, Concave, convex, regular prism & metal barrier
- >Waves generated with a roller bar
- >Accessories: Electric wave generator with rheostat
- Hand stroboscope
- 12V light source



NSSTF0095 STIRRING ROD/POLICEMAN

- >Used for stirring and thawing
- >Made of borosilicate glass
- >Both ends rounded
- >Size: 300 X 6mmØ



NSPR0096 ROD – PERSPEX

- >Used For electrostatics
- >Made of Perspex
- >Polythene and PVC rods available
- >Size: 200 X 10mm

NSSC0097 SCALPEL

- >Comes with a fixed blade
- >Made of high quality steel



>Handle length: 113mm

>Blade length: 38mm

NSSB0098 SCALPEL BLADE

>Surgical quality steel blades

>For use with handles no. 3 &4

>Sizes: 10 & 10A for no. 3 handle;
11 for no. 3 handle
22, 23 & 24 for no. 4 handle



NSDS0099 SCISSOR – DISSECTING & IRIS



>Straight, closed shanks
>Sharp stainless steel, 112mm
>Blunt type available at 130mm

NSSP000100 SLINKY

>Wave form helix

>Made from tempered steel wire

>Size: 75 X 50mm



NSSC0101 SMOKE CELL

>Clear demonstration of Brownian motion

>Short cylindrical glass cell

>Transparent plastic window

>Line filament lamp

>Cylindrical Perspex lens

>4mm sockets

>Size: 90X90X30mm height



NSSN0101 SELENOID

>Single layer, hollow PVC former

>2 pillar type captive screw terminal

>Wire is 0.71mm enameled



>Length of winding: 75mm

>Available: 120 turns, 240 & 360 turns



NSSM0102 SONOMETER

>Simple type on plywood box type

>Open bottom with adjustable pegs

>Two steel strings of equal thickness

>Separate movable bridge for each string

NSSP0103 SPECTROMETER

>Standard, robust and inexpensive

>Vernier reads to 6 min of arc-resolution

>Sodium 'D' lines; Scale: 170mmØ

>Collimator: focal length150mm, aperture 21mm

Telescope focal length: 170mm, aperture 170mm

>Prism table 3; with leveling screws

>Weight: 4.5kg



NSSC0104 SPECTROSCOPE

>Hand held optical system

>600 1/mm diffraction grating

>Produces bright linear spectra

>Aluminium construction

>Size: ±12mmØ X 50mm long



NSSE0105 STEAM ENGINE UNIT

>Double action reversible cylinder

Fly-wheel with grooved pulley

>Spring loaded safety valve

>Centrifugal governor

>Steam jet oiler



> Burner designed to operate with fuel tablets

NSST0106 STEAM TURBINE

> Cast iron or aluminium casing
 > Fitted with a nozzle that directs steam to blades of the rotor
 > Fixed blades direct water against movable blades



NSTT0107 DIGITAL ALARM CLOCK

> Pocket format, Magnet and desk support
 > LCD display 49x21 mm.
 *Functions: 1 sec – 24 hours counter.
 – 1 sec – 24 hours chronometer.
 > 4 memory, 4 alarm.
 > Dimensions: 71x21x60 mm.



NSTG0108 DIGITAL TIMER

> Digital display with quartz battery
 > Push button operation
 > Spring clip, magnetic stand & mount
 > Measures lapsed time up to 100 min
 > 1 second accuracy



NSTD0109 TROLLEY DYNAMICS

> Consists of track and trolley kit
 > Kit consists of a 1.25m aluminium track
 > Trolley running on dynamically run-in bearings
 > Ticker timer mounts at end of track
 > Comes with ticker tape, thread, pulley, mass pieces, hooks and stop watch



> Carbon discs, line level and tape measure

NSWR0110 WORMERY – ROTHAMSTED PATTERN

> Shows burrowing behavior of worms
 > Vertical support frame; Clear Perspex slides
 > 265X192X50mm; plywood black outside



NSVM0111 VOLTMETER

> Accuracy: moving coil: $\pm 2.5\%$
 > Scale length: $\pm 65/70$ mm (deflection angle: 90°)
 > Internal resistance: 50mV; 4mm socket
 > Size: 100-140mmX100X90 – 100mm
 > Single range: 0-5V; Single range 0-10V
 > Dual range 0-5V; 0-15V
 > Triple range: 0-3V; 0-15V, 0-300V



NSVD0112 VOLTMETER – DC

> For use on overhead projector
 > Indicator window: ± 25 cm
 > Complete with multiplier & connector leads
 > 2 Ranges: 0-3V; 0-15V
 > Locally manufactured alternative available



NSTT0112 TICKER TIMER

> Size: 15mm wide and 30mm long
 > To work with any standard dynamics kit
 > Fits different sizes of ticker tape
 > Latest design for electronic circuit

>Available in AC and DC models

TECHNOLOGY

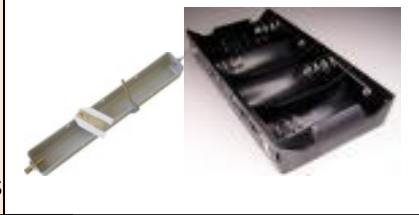


TTBB001 BATTERY

- >Central positive head
- >For use with cell holder or snap
- >Rectangular 9V; AA penlight and Torch 1.5V

TTCH002 BATTERY CELL HOLDER

- >Strong plastic tray type
- >Tension screw on one end
- >Terminal screw on the other
- >Takes 4D-type cells
- >Can use 1,2,3,4,6 cell in a series



TTBC003 BATTERY CHARGER

- >Dual type for 6V and 12V
- >Contains 5A fuse
- >Also available: 12V 8A fuse

TTPB004 PAINT BRUSH

- >For painting, pasting or vanishing
- >Sizes: 13mm, 19mm, 25mm, 50mm, 75mm,
- >Also available in set of 4 and 10



TTBA005 PAINT BRUSH – ART

- >Ideal for water colour work
- >Sizes: Ref 6, 12, 18, 24

TTCC006 CAPACITATOR



- >10mf 25v
- >100mf 25V
- >1000mf 25V



TTCW007 TECHNOLOGY WALL CHART

- >Size: A1, 76X50cm, 100x50cm
- >Various concepts of technology

TTCH008 CLAMP – G

- >For holding wood steady while glue dries
- >Sizes: 50mm; 75mm
100mm; 150mm



TTCT009 CONNECTOR – T

- >T (3-way) connector
- >3mm OD
- >Ideal for pneumatics and hydraulics
- >Used with 3mm PVC tubing



TTCR010 COTTON REEL

- >Plain plastic reel
- >Ideal for building models
- >Comes in different colours



TTCS011 CUP & SPOON MEASURING SET

- >Accurate measuring set
- >Ideal for food technology work
- >Made of durable PVC material



TTCW012 – CUTTER HOT WIRE TABLE MODEL

- >For cutting polystyrene shapes and models
- >Low cost table model, 500X500mm work surface
- >Both hands free to allow material through cutter



- >Cuts sheets up to 150mm and 1m wide
- >Thermostat to regulate temperature of cutting wire
- >Also available: Hand operated using battery

TTDR013 DIODE RECTIFIER

- >1N4007
- >Packet of 10



TTDBH014 DRILL BIT SET

- >For wood, metal, plastic & Perspex
- >Set of 13 pieces
- >Also available in individual sizes

TTHD015 HAND DRILL

- >Manual, with 6mm chuck
- >Double pinion; hardwood or plastic handle
- >Also available: pistol grip type
- >High gear ration with easy turn



TTEB016 ELASTIC BAND

- >Ideal for binding material
- >Good substitute for driving pulley
- >100g box

TTFW017 FILE – WOOD

- >For shaping wood, soapstone & other material
- >3 piece: round, half round and flat
- >With wooden or plastic handles



TTGP018 GEAR PACK

- >Contains 10each of 15,30,45 and 75 toothed gears.

- >Diameters: 17,32,47 and 76mm
- >Gears can lock into each other creating a gearbox
- >Pack contains 10 locking bushes for firm grip

TTFA019 FIRST AID KIT

- >Consists of: 1 eye cup; 10 plasters; Vynil pouch, 1 roll bandage 75, 50mm; triangular bandage; 10 Pin tablets; 30ml antiseptic; 30g antiseptic cream; 5ml eye drops; 1 pair latex gloves; 1 pair scissors; 1 wad cotton wool; 1 Resusi-aid,
- >Complete with training manual



TTHS020 HACKSAW – JUNIOR

- >Sturdy design with tension frame
- >Vertical handle, 150mm long
- >Spare blades available in pack of 10
- *Also available: Tenon saw



TTTK021 KNIFE – TRIMMING

- >Retractable blade
- >Sharp new segments with edge
- >Spare blades available in pack of 10
- *Aslo available: Utility Knife



TTLE022 LED

- >Alternatives To lamp
- >Add colour to working systems
- >Available in red, orange, green and white



TTMM023 MOTOR - ELECTRIC



- >Available in economy type: 1.5V – 3V
- >Medium torque type: 3V – 4.5V
- >High torque type: 4.5V – 6V

TTLB024 LINE BENDER

- >Low cost table model with 350mm length wire heating element
- >Perfect for bending shapes and articles from sheet plastic
- >Learners can shape a whole lot of articles using the machine
- >Unit has temperature setting dial to control heating effect of wire element



TTMK025 MOTOR KIT

- >Can be used to motorize objects learners built with technology starter pack
- >Consists of: 10 electric motors; 10 gears/pulleys to fit motors; 10 motor mounting brackets
- 10 SPDT mini toggle switch; 10 battery holders 2AA battery snap; 5m red and black leads



TTNB026 NUT AND BOLT PACK

- >Ideal for joining different plastic components To each other and other material like wood strips
- Each pack contains: 100 4mm galvanized bolts; 100 M4 nuts; 100 M4 washers;
- >Comes in a pack of 100



TTPO27 PAINT POWDER

- >500G PACK



- >Ideal for beginner artists
- >Available in various colours

TTPLO28 PLIERS

- >150mm combination pliers
- >150mm diagonal cutting pliers
- >150mm long nose pliers
- *Also Available: 115mm mini side Cutter for electronic & Raco eyelet

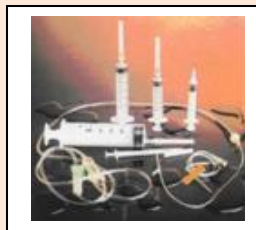


TTLP029 LEATHER PUNCH

- >For making different sized holes In leather or cardboard
- >With revolving head
- >6 standard punch tubes:2, 2.5, 2.8, 3.2, 4.0 and 4.8Ø
- *Also available: Pop Riveter

TTPH030 PNEUMATICS & HYDRAULICS KIT

- >Ideal for hydraulics and pneumatics projects
- >Consists of: 2 10ml plastic syringes; 2 20ml plastic syringes; 1x50ml plastic syringe
- 1m PVC tubing 3mm
- 2x T-pieces 3mm diameter



TTPB031 PROJECT BOARD

- >500cm – 900cm
- >With stand or wall socket
- >Various colours

TTRE032 RESISTER



- >Ideal for small circuits
- >Available: 390ohm; 470ohm; 680ohm; 1k ohm; 10k ohm

TTRS033 RULER – STAINLESS STEEL

- >300mm long
- >Engineers type
- >Accurate measurements and for cutting

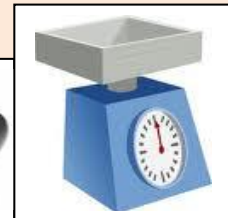


TTSC034 SA – COPING

- >For use where slight curves are required
- >For cutting f thin material
- >Spare blades available

TTKS035 KITCHEN & BATHROOM SCALE

- >Comes with plastic bucket
- >Dial indicator
- >5kg capacity



TTSJ036 SCREWDRIVER – JEWELLERY TYPE

- >Precision type
- > Comes in set of 6
- >Made of durable alloy

TTSE037 SOLAR ENERGY KIT

- >Educational
- >Learn about solar energy and how to build your own solar system
- >Complete with solar panel, small motor and propeller blade



TTSS038 SOLDER SUCKER

- >A vacuum de-soldering pump
- >Designed for one and operation
- >Lightweight and easy to use

TTSI039 SOLDER WIRER & IRON



- >1mm core
- >250g
- >Electric soldering iron
- >Comes in 30W and 40W
- *Also available: soldering iron stand



- >Takes 400X375mm plastic sheets
- >Separate heating and vacuum chambers with own operating switches

TTSB040 STRING AND BALL

- >White string
- >50g



TTSM041 MINI SWITCH

- >Push type switch
- >Mini slide
- >Different min toggle



TTTS042 TRI SQUARE

- >Metal, 150mm
- >Ideal for use with wood strip
- >Try mitre for 90° markings



TTVF043 VACUUM FORMER

- >Designed for moulding ABS and styrene plastic sheets forms
- >Low cost version of industrial machine
- >Ideal for teaching vacuum forming techniques in materials technology



MATHEMATICS



MSAB001 ABACUS – BASE 10

>A wooden standing model with rows of coloured plastic beads

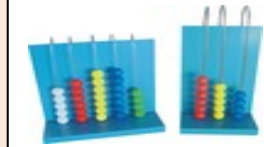
>10 rows of beads, 315 X 240mm

>5 rows of beads, 180 X 240mm

*ABUCUS HOOPED:

>3 loops with 10 beads each, 150 X 135mm

>5 loops with 10 beads each, 150 X 200mm



MSMB002 BALANCE - MATHEMATICAL

>Children learn the value & meaning of numbers

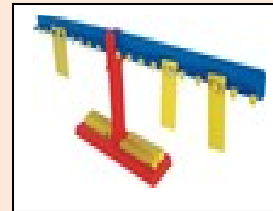
by placing weights on the plastic balance

>Set includes a 220 X 660mm balance

>Comes complete with 20 X 10g weights

*Also available: Rocker and Simple balances

*Rocker balance demonstrates concepts of weight, volume and weighing using balance



MSBT003 BASE TEN

>3 Dimensional model set assists pupils to learn concepts of units, tens, 100s and 1000s

>Each piece is marked in cm² to show how they relate to the whole

>Set comprises of:

100 unit cubes 1X1X1cm

10 rods 1X1X10cm

10 flats 1X10X10cm

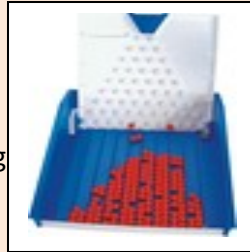


1 cube 10X10X10cm

>Boards illustrate the concept of fractions of a Whole number and relationships that exist
>Plastic printed tiles supplied with base board

MSBS004 BINOSTAT

>A probability instrument that visually demonstrates binomial distribution
>Ball are fed in at the top and randomly bounce on the pegs towards the tray forming a histogram
>Supplied with 150 balls



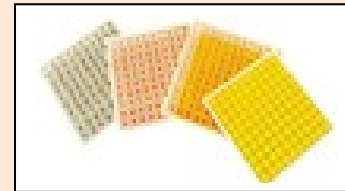
MSGS008 GEOMETRIC SHAPES

>Two dimensional shapes suitable for studying shape area.
> Also for simple sorting & mosaic building
>Supplied with 16 shapes, 10 colors
>Supplied in plastic tray



MSNB009 NUMBERS BOARD

>Children use numbers board for basic counting, multiplication, addition, division subtraction.
>Size: 220X 220mm



MSOL010 BEADS AND LACES

>Set develops pupils' concept of grouping, ordering and number association
>Set of 100 beads and 4 laces



MSRC011 RODS – COLOUR (CUISENARE RODS)

>Rods used to demonstrate basic mathematical Operations
>Size and colour of rods represent abstract numbers
>Supplied with 10 colour rods, 298 pieces
>1X20cm ruler and rod rail in rigid box

MSSN012 SPINNER

>A durable plastic board with spinner
>Suitable for developing understanding of probability
>Demonstrates basic arithmetic functions
>Size: 220 X 220mm



MSTW013 TRUNDLE WHEEL

>Each full rotation registered by loud click



MSCA005 CHALKBOARD APPARATUS SET

>Made from solid hardwearing plastic
>Contains handle in the centre for steadiness
> Compass has a piece of chalk on one end And a rubber/steel point option
>Consists of: 1m ruler; 30/60° set square 45° set square; Protractor Compass/ Dividers
*Optional: 1m Chalkboard T-Square



MSCI006 INTERLOCKING CUBES

>Mult use system of fully interlocking cubes
>Each is 1cm³ and 1 gram
>Activities include counting, patterns' grouping Color identification, building 3D models and for Measuring length, volume and weight
>Pack of 100 with 10 different colors



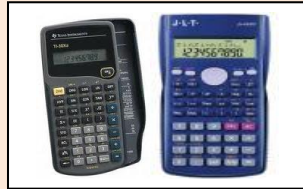
MSFS007 FRACTION SET



- >Each click signifies meter traveled
- >Superior quality
- *Also available: economy type

MSTW014 CALCULATOR – MATHEMATICS

- >Economical
- >Robust model 8-12 digts
- *School scientific calculator also available



MSTW015 CLINOMETER – HAND HELD

- >Used To measure height of trees, buildings and other structures
- >For depth measurements of valleys
- >Readings shown on graduated disc
- Attached to a protractor
- >Guide formula for calculating H provided
- >Durable plastic material for heavy class use



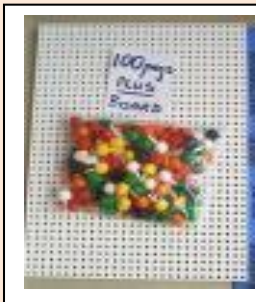
MSTW016 CLOCK DEMONSTRATION - GEARED

- >Lightweight clock 220X220mm
- >Made of strong durable plastic
- >Two hands move independently
- >Time before and after can be shown



MSTW017 PEGBOARD AND PEGS

- >This Set is ideal for sequencing, sorting and pattern symmetry
- >5 plastic 100 hole (150X150mm) pegboards with assorted coloured pegs



MSTW018 DICE – MATHS & WITH SYMBOLS

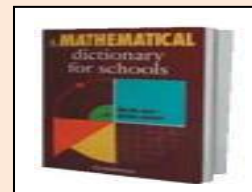


MSTW019 DOMINOES – COLOUR

MSTW020 MATHS INSTRUMENT SET



MSTW021 MATHEMATIC DICTIONARY



MSTW022 MIRRORS – REFLECTION SET



MSTW023 TANGRAM SET



