

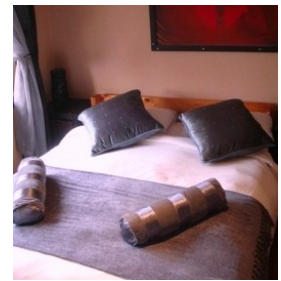


**Tube 'n Axe Rates 1st May 2012 – 30 April 2013**

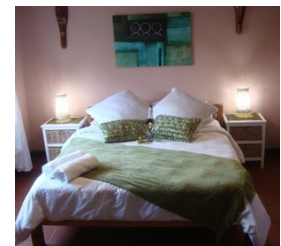


**EN SUITE PRIVATE ROOMS: 10 pax includes linen & towels**

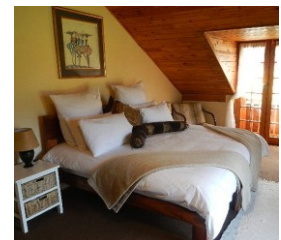
ASSEGAAI family/quad/double en-suite [ ♀ ♀ ♀ ♀ ]  
 Singles R400  
 Features  
 Beds Double, Bunk beds  
 Bathroom Facilities En suite bathroom  
 Views Mountain, Garden  
 Other No Smoking in Rooms



CANDLEWOOD double en-suite [ ♀ ♀ ]  
 Singles R400  
 Features  
 Beds Double  
 Bathroom Facilities En suite bathroom  
 Views Garden  
**Other No Smoking in Rooms**



Protea House East double en-suite [ ♀ ♀ ]  
 Singles R500  
 Features Upstairs balcony  
 Beds King Double  
 Bathroom Facilities En suite bathroom  
 Views Storms River Peak Garden  
**Other No Smoking in Rooms**



Protea House West twin en-suite [ ♀ ♀ ]  
 Singles R500  
 Features Upstairs balcony  
 Beds 2 x single  
 Bathroom Facilities En suite bathroom  
 Views Garden



## EN-SUITE PRIVATE ROOMS: 11 pax includes linen & towels

**BOEKENHOUT** double en-suite [ ♀ ♀ ♀ ]  
 Singles R400  
 Features  
 Beds King/singles, Single Beds  
 Bathroom Facilities Private Bathroom  
 Views Mountain, Garden  
 Other No Smoking in Rooms



**IINKUNI** family/quad/double en-suite [ ♀ ♀ ♀ ♀ ]  
 Singles R400  
 Features  
 Beds King/singles, Bunk beds  
 Bathroom Facilities Private Bathroom  
 Views Garden  
 Other No Smoking in Rooms



**Rooi Els** double/twin [ ♀ ♀ ]  
 Singles R320  
 Features  
 Beds King/singles, Single Beds  
 Bathroom Facilities Shared Bathroom ie Camping ablutions  
 Views Mountain, Garden  
 Other No Smoking in Rooms



**Yellow Wood** twin [ ♀ ♀ ]  
 Singles R320  
 Features  
 Beds King/singles, Single Beds  
 Bathroom Facilities Shared Bathroom ie Camping ablutions  
 Views Mountain, Garden  
 Other No Smoking in Rooms



## DORMITORIES: 20 pax includes linen

**IRONWOOD** [ ♀ ♀ ♀ ♀ ♀ ♀ ♀ ♀ ♀ ♀ ♀ ♀ ♀ ♀ ]  
 Singles pp R130  
 Beds Bunk beds  
 Bathroom Facilities Ensuite toilets & showers  
 Other No Smoking in Rooms



**KALANDER** [ ♀ ♀ ♀ ♀ ♀ ♀ ]  
 Singles pp R130  
 Beds Bunk beds  
 Bathroom Facilities Shared Bathroom  
 Views Garden  
 Other No Smoking in Rooms



**OTHER - ELEVATED TENTS: 4 pax includes linen**

**TENT 3 [ ♀ ♀ ]**

Singles	R240
Features	Secluded garden tent elevated 1m power point & light
Beds	Queen
Bathroom Facilities	Shared Bathroom
Views	Garden
Other	Upstairs, No Smoking in Rooms

**TENT 4 [ ♀ ♀ ]**

Singles	R240
Features	Secluded garden tent elevated 1m power point & light
Beds	Queen
Bathroom Facilities	Shared Bathroom
Views	Garden
Other	Upstairs, No Smoking in Rooms



**CAMPING: 30 pax**

Singles pp	R75
Features	Overland truck site incl. Wash-up sink, prep counters, braai area, light point and electrical power point.
Campsite	large shaded lawns fire places x 2 and exterior lighting
Bathroom Facilities	Yes
Other	Green grass, lots of shade, facilities for Overland Trucks



**LUXURY PRIVATE EN-SUITE ROOMS: 3 pax includes linen, towels, tea & coffee**

**CAPE HOLLY double/triple en-suite [ ♀ ♀ ♀ ]**

Singles

R600



Beds

King/singles, Single Beds

Bathroom Facilities Private Bathroom  
Views Mountain, Garden  
Other **No Smoking in Room**

## Terms & Conditions

Our venue is reserved for our guests only, unless a prior booking has been made with Management.

Right of Admission is reserved.

Please note:

Pre-bookings advisable.

Walk-ins welcome.

All quotations valid for a period of 14 (fourteen) days.

### CONDITION OF PAYMENT:

A 100% deposit or upfront credit card payment will confirm all bookings. No booking can be confirmed without the required proof of payment or credit card payment.

- Bank cheque clearances, reserved for Tour Operators only;
- Vouchers acceptable.
- Payment terms strictly 30 days from invoice.

### CANCELLATION POLICY:

Tube 'n Axe reserves the right to claim the full fee should the Client/Operator fail to cancel the booking prior to arrival date or fail to arrive.

Right of Admission:

Tube 'n Axe reserves the right of admission and to claim the full fee should the Client/Operator behave in such a way that may negatively affect the experience of other guests and patrons.

Deposits are not refundable under the above-mentioned circumstances.

### TARIFFS:

Tariffs quoted subject to change. Prior notification of such price changes will be communicated in advance where possible.

Fixed quotations confirmed in writing will be honoured in the event of price changes.

VAT is included in all prices.

### ADDITIONAL EXTRAS:

All extras not mentioned, for own account and should be settled before departure.

### CONFIRMATION OF BOOKINGS AND FINAL NUMBERS:

Confirmation of bookings and final numbers must be confirmed at least 48hrs in advance.

### Banking details:

MALI Accommodation & Adventures cc  
FNB Plettenberg Bay  
Account: 62356886039  
Branch: 250655  
Current Account

## Bookings Essential

P.O Box 19,  
cnr. Saffron & Darnell Streets,  
Stormsriver Village, 6308  
GPS 33°58'20.91"S 23°52'58.73"E

Web: [www.tubenaxe.co.za](http://www.tubenaxe.co.za)

Email: [info@tubenaxe.co.za](mailto:info@tubenaxe.co.za)

Tel: +27 (0)42 2811757

Mobile: +27 (0)79 6368008

Fax: +27(0)42 2811214

