

HOW-TO

GUIDE TO A UNIQUE EXPERIENCE

WELCOME TO ENMASSE. IN THE SPIRIT OF MASSAGE AS A WAY OF LIFE, NOT A LUXURY, ENMASSE INVITES YOU TO BECOME PART OF A TRULY UNIQUE DE-STRESSING EXPERIENCE.

THE MENU

THAI MASSAGE
SHIATSU
REFLEXOLOGY
THAI FOOT MASSAGE
PREGNANCY MASSAGE

PRICING

+ ENMASSE SPECIAL 3X60 MIN: R360 EACH
+ 60 MINS R395
+ 90 MINS R525
+ 120 MINS R670

All our treatments are available as vouchers: electronic and physical.

MEMBERSHIP



BLUE MEMBERSHIP
R670 PER MONTH (R335 EACH)
2 x 1 HOUR TREATMENTS



ORANGE MEMBERSHIP
R1140 PER MONTH (R285 EACH)
4 x 1 HOUR TREATMENTS

KEY FACT

ENMASSE: DERIVED FROM EN MASSE [ÖN MÅS] MEANING TOGETHER OR AS A GROUP

Member treatments are transferable and never expire (unused credits roll from month to month and can be shared or gifted).

Requests for exceptional pressure includes a service charge of R50 (all of which is paid to the therapist).

ENMASSE STEP BY STEP:

01

COLLECT SUIT BAG AND CLOTHES FROM RECEPTION

All treatments at enmasse are performed in white cotton clothing without the use of oil and take place in a semi private environment.

03

ENJOY YOUR UNIQUE MASSAGE EXPERIENCE

After your massage we encourage you to relax (or better, sleep) for as long as needed.

02

CHANGE INTO CLOTHING

Fill your suit bag with your clothing and return to the desk. Valuables: We have lockers with keys behind the reception desk.

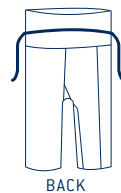
04

ENJOY THE TEA ROOM EXPERIENCE

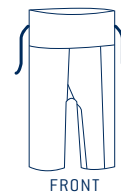
Before and/or after your massage please relax with your feet up and enjoy one of the 47 different tea blends from our tea tree. A map of the teatree will help you find the tea with the therapeutic benefits you are looking for.

HOW TO WEAR THE PANTS:

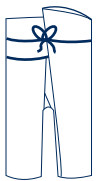
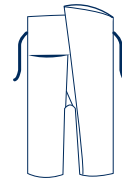
1. STEP INSIDE - *don't be surprised if they seems enormous*
2. WRAP BOTH SIDES TO FIT WAIST- *leave some room to breathe*
3. TIE THE STRING BELT - *avoid embarrassment*
4. FOLD OVER THE STRING- *relax and enjoy*



BACK



FRONT



OUR COMMITMENT

- + ALL THERAPISTS HAVE BEEN TRAINED BY CERTIFIED INSTRUCTORS
- + BEFORE EACH TREATMENT THERAPISTS CLEAN THEIR HANDS WITH ANTIBACTERIAL LOTION (LOCATED NEXT TO THE LAUNDRY BIN AT THE TOP OF THE STAIRS).
- + AFTER EACH TREATMENT YOUR PANTS, SHIRT, HAVIANAS, SHEET, PILLOW CASE AND HAND TOWEL ARE PROFESSIONALLY CLEANED.
- + TO FURTHER ELEVATE YOUR ENMASSE EXPERIENCE WE WOULD SINCERELY APPRECIATE YOUR FEEDBACK.

BOTTLED WATER AND TEA ARE COMPLIMENTARY:

PLEASE REMEMBER TO REMAIN HYDRATED

Muscle manipulation and stretching releases toxins into the blood: please keep hydrated on our complimentary filtered water to avoid possible nausea and headaches. The tea lounge closes at 8pm.



IT'S NOT THAT KIND OF PARTY: PLEASE KEEP UNDERWEAR ON. ALL BODY TREATMENTS AT ENMASSE ARE CLOTHED AND OIL FREE.

N⁰³

Is the name of our signature aromatic. A blend of Cedarwood, French Tarragon, Carrot Seed and Jasmine with specific therapeutic qualities to enhance the massage experience (it's delicately borne through the air and applied to your clothing and linen).

THAI MASSAGE / SHIATSU / REFLEXOLOGY / THAI FOOT MASSAGE / PREGNANCY MASSAGE
MESSAGE CONCEPT

enmasse

OPENING HOURS // 8AM - 10PM / 7 DAYS A WEEK

enmasse

GATE 2 SCHOONDER ST/123 HOPE STREET, GARDENS | 021 461 5650
message@enmasse.co.za www.enmasse.co.za

MAP

