

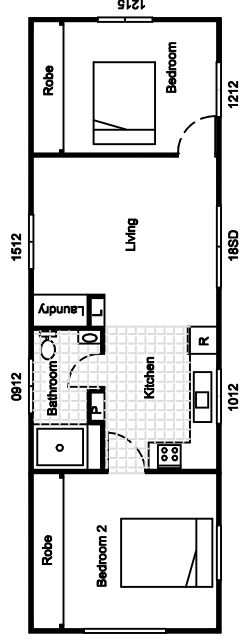


# Multispan

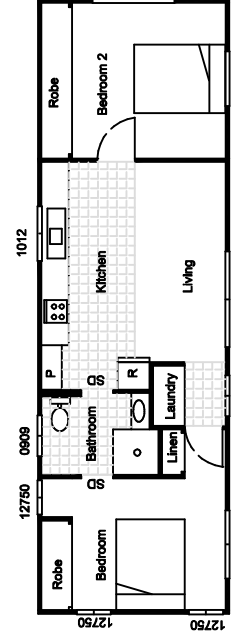
## kit and manufactured homes and other buildings

Manufactured Residential 2 Double Bedroom Homes. These plans can be altered to suit your personal needs. Prices below are for fully built ex factory, ready for you to transport to your property, connect to existing services, walk in and enjoy.

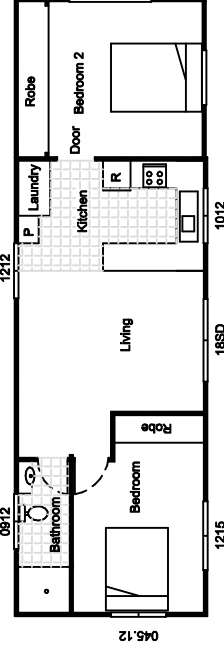
All plans are subject to copyright 2008 Multispan Kit Buildings Phone (02) 66879954. Prices may change due to industry price rise without notice. All prices are quoted ex factory using Colorbond roofing and painted Weatherex cladding. Aluminium sliding windows an doors, Standard Fly screens. Full kitchen, quality carpet, vinyl and floor and wall tiles, built in robes and linen, internal wall & ceiling painted, vanity, wc, shower, electric overhead fans, gas hot water, gas oven. Fully insulated BASIX compliant to Australian Building Standards for residential dwelling includes Home Warranty.



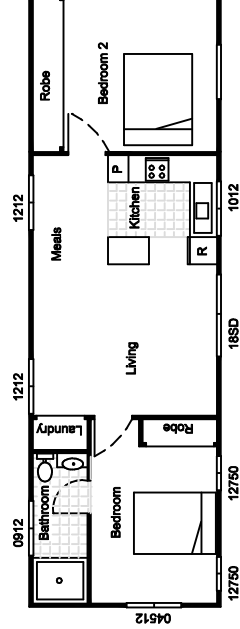
2 Double Bedroom 4.1m x 13750m Prefab "A2"  
\$63,735.00



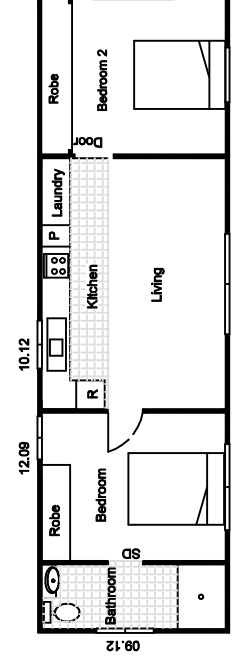
2 Double Bedroom 4.1m x 13750m Prefab "D2"  
\$66,156.00



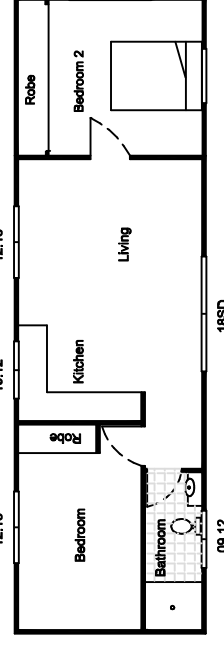
2 Double Bedroom 4.1m x 13750m Prefab "G2"  
\$64,419.00



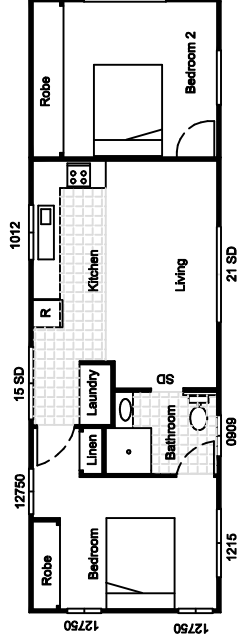
2 Double Bedroom 4.1m x 13750m Prefab "B2"  
\$65,634.00



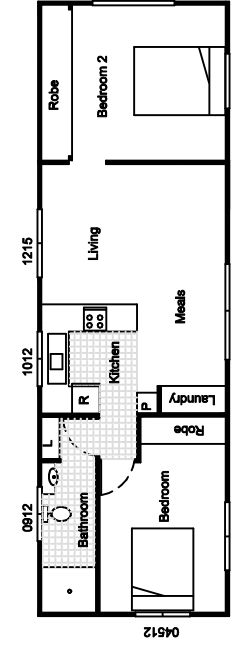
2 Double Bedroom 4.1m x 13750m Prefab "E2"  
\$63,024.00



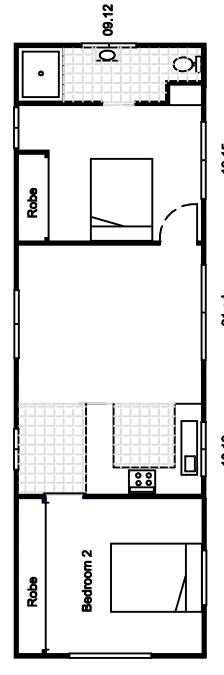
2 Double Bedroom 4.1m x 13750m Prefab "H2"  
\$61,911.00



2 Double Bedroom 4.1m x 13750m Prefab "C2"  
\$65,364.00



2 Double Bedroom 4.1m x 13750m Prefab "F2"  
\$65,705.00



2 Double Bedroom 4.1m x 13750m Prefab "I2"  
\$63,158.00