



RETAIL PRICE LIST

March
2012

MTR	from 1 st April 2012	S.R.P.
-----	---------------------------------	--------

		Inc-vat @20%
<u>19" OUTBOARD</u>		
HPA-6	6 channel stereo headphone amp, 1u, 2 stereo & 1 aux. in, hi/lo e.q.....	420.08
<u>BLACK BOXES</u>		
HPA-2	2 channel stereo headphone amp, Aux. in, loudness/mono button	184.94
DI-3	Active direct injection box, ground lift, 3 way attenuation, 9v battery or Phantom Power or external DC power	59.99
DI-2	As DI-3 but two channels	99.53
DI-1	Passive direct injection box, twin transformers, 3 way attenuation, ground lift.....	54.36
DI-2P	Passive 2 channel direct injection box, 4 transformers, as above	74.37
PPS-48	4 channel Phantom Power Supply, 48v, mains powered.....	145.29
PS-248	2 channel version of above (min 25 pcs)	122.83
PS-4	Passive headphones signal splitter, 1 into 4 stereo jacks, rubber feet	35.21
PS-435 - new	As PS-4 but mini-jack version, 3.5mm jack sockets and 1m captive input lead	26.46
PS-4v	As above, with two volume controls, one on channel 1 and one on channel 4	46.87
PS-8	As PS-4, but 1 into 8 stereo jacks, steel box	66.35
PS-8v	As PS-8 but with volume controls on channels 1, 4, 5 and 8	83.92
AL-22S	200mm cable splitter, 1 stereo 6.3mm jack plug to 2 stereo 6.3mm jack sockets.....	1.98
DC-8DUAL	8 way 9v DC power supply for keyboards, Dual Polarity, incl 8 x 3m. DC leads	126.02
Casio AD95	Replacement leads for Casio keyboards using AD-95 power supply.....	2.99
<u>ACOUSTIC FOAM PANELS (All fire retardant) *</u>		
Proline 143	40mm Sound Absorption Panel, rounded profile, 1m ² , dark grey	27.36
Proline 153	50mm as above	32.29
Proline 173	70mm as above	41.52
Studioline 253	50mm Pyramid profile, 1.2m ² , as above.....	34.26
Studioline 273	70mm Pyramid profile, as above	54.74
Studioline 293	100mm Pyramid profile, as above	65.51

* MINIMUM ORDER QUANTITY (FOR FOAM PANELS ONLY) for delivery in 10 working days: Proline 143: 26 panels, 153: 22 panels, 173: 16 panels. Studioline 253: 20 panels, 273: 14 panels, and 293: 12 panels
or ANY QUANTITY BUT UNSPECIFIED DELIVERY DATE. Please order in even numbers of panels (they are made in pairs).

stageClix DIGITAL WIRELESS SYSTEMS	from 1 st June 2011	S.R.P.
------------------------------------	--------------------------------	--------

stageClix 'Jack' Version 2	20Hz-20kHz ±1dB, s/noise 97dB, <2millisec latency, <u>no</u> compander 2.4 GHz band (legal worldwide), rechargeable batteries , 15 hours playing time, 60 metres range. Now includes 'cable capacitance' feature in the transmitter. Supplied in a quality briefcase. For passive and most active instruments.....	375.00
Extension Lead/Pouch	Locking Neutrik jack socket to jack plug cable and belt/strap leather Pouch for awkward access instruments	35.50
Jack Transmitter	Spare/extra transmitter with rechargeable batteries.....	202.50
Receiver	Spare 'Jack' Receiver.....	150.59
Univ power supply	Digital 100-240V AC external psu with changeable UK, European & USA pins	37.47
Battery Pack	Twin cell rechargeable, 5 year expected life.....	29.68
Case	Spare moulded case with foam cut-outs	41.36
stageClix 'Pack'	All details as 'Jack' but beltpack version, two belt clips, Velcro strap, two inputs: minijack for all active and passive instruments and 3.5mm pre-amplified input for mics, with phantom power, minijack to 6.5 jack cable for guitars and basses. Weight 70 grammes inc. batteries.....	415.00
Pack Transmitter	Spare/extra transmitter with rechargeable batteries	218.20
Pack Cable	Spare connector cable, mini-jack to regular 6.5 jack	15.30
QDE 0803 Lavalier	Broadcast quality omni back-electret lavalier condenser mic, 20-20kHz ±3db, sens -62dB, S/N >65dB, compatible with 'Pack'. 2.5mm trs gold jack.....	50.85
QDE 0804 Clip-on	Clip on wind instrument mic, leaves no mark, flexible gooseneck & integrated shockmount. Back-electret cardioid, 50-18kHz ±3db, sens -65dB, S/N >65dB	76.93

CELESTION CHASSIS SPEAKERS

from December 2011

S.R.P.

Alnico Series

G10 Gold	10", 40w, 80-6kHz, alnico, 8/15 ohms, 2.7kg	172.00
CELESTION BLUE	12", 15w, 75-5kHz, 100db, alnico 936g magnet, 8/15 ohms, 4.2kg.....	227.00
CELESTION GOLD	12", 50w, same spec high-power version of the BLUE	227.00

Heritage Guitar Speakers

G12M	12", 20w, 75-5kHz, 96dB, 35oz ceramic, 8/15 ohms, 3.6kg	140.86
G12H	12", 30w, 55-5kHz, 100dB, 50oz ceramic, 8/15 ohms, 4.7kg.....	153.99
G12-65	12", 65w, 80-5kHz, 97dB, 8/15 ohms, 3.5kg	133.70
G12 EVH	12", 20w, 75-5kHz, 96dB, 8/15 ohms, 3.6kg	153.99
G12 Lynchback	12", 50w, 75-5kHz, 97dB, 8 ohms... new	101.61

Classic Guitar Speakers

G10N-40	10" 40w, 90-5kHz, 96dB, 20oz ceramic 8/16 ohms, 1.9kg	44.12
G10 VINTAGE	10", 60w, 100-7kHz, 97dB, 31oz ceramic, 8/16 ohms, 2.4kg.....	51.79
G10 Greenback	10", 25w, 75-6kHz, 97dB, 31oz ceramic, 8/16 ohms, 1.6kg	77.60
G12M GREENBACK	12", 25w, 75-5kHz, 97db, 35oz ceramic, 8/16 ohms, 3.6kg	83.57
G12H 70th Aniv	12", 30w, 75-5kHz, 100db, 50oz ceramic, 8/16 ohms, 4.7kg.....	88.34
G12T-75	12", 75w, 80-5kHz, 97db, ceramic, 8/16 ohms, 3.5kg	70.43
VINTAGE 30	12", 60w, 70-5kHz, 100dB, ceramic, 8/16 ohms, 4.7kg	83.57
G12-80 CLASSIC LEAD	12", 80w, 80-5kHz, 99db, 50oz ceramic, 8/16ohms, 4.7kg	83.57
G12 CENTURY VINTAGE	12", 60w, 75-5kHz, 100dB, neo magnet, 8/16 ohm 1.7kgs.....	97.89
G12K-100	12", 100w, 70-5kHz, 99dB, 8 ohms, 4.7kg	83.57

Original Guitar Speakers

SUPER 8	8", 15w, 100-5kHz, 94dB, 1" copper coil, 8oz ceramic magnet, 8 ohms,0.6kg.....	14.32
TUBE 10	10", 30w, 85-5kHz, 96dB, 17oz ceramic magnet, 8 ohms,1.6kg	23.87
ROCKET 50	12", 50w, 85-5kHz, 95dB, 17oz ceramic magnet, 8 ohms, 2kg	34.62
G12T HOT-100	(replaces G12T) 12", 100w, 80-5kHz, 97db, 2" cop coil, 35oz ceram, 8/16 ohms, 3.2kg	52.53
SEVENTY 80	12", 80w,80-5kHz, 98dB, 30oz ceramic magnet, 8 ohms, 3.1kg	45.36

Bass Guitar Speakers – Green Label: Rock – all 8 ohms

BL10-100 X	10" 100w, 1.5" coil, 50-3k5Hz, 94dB, 2.4 kg	34.62
BL10-200 X	10" 200w, 2" coil, 45-3k5Hz, 94dB, 3 kg	48.95
BL15-400X new	15" 400w, 3" coil,	94.25
TF 1220	12" 200w, 2" coil, 60-4kHz, 97dB	51.34
TF 1530	15" 400w, 3" coil, 40-3kHz, 99dB	94.25
BN10-200 X	10" 200w, 2" coil, neo magnet, 45-3k5Hz, 96dB 1.5kg.....	70.43
BN12-300 X	12" 300w, 2.5" coil, neo magnet, 40-3kHz, 95dB, 2.0kg.....	79.99
BN15-400 X	15" 400w, 3" coil, neo magnet, 38-3000Hz, 95dB, 2.6kg.....	133.70

Bass Guitar Speakers – Orange Label: Clean – all 8 ohms

TN 1020	Like BN10-200S, 10" 200w, 2" coil.....	72.29
BN12-300 S	12" 300w, 2.5" coil, neo magnet, 50-4kHz, 99dB, 2.0kg	73.82
BN15-300 S	15" 300w, 2.5" coil, neo magnet, 47-4kHz, 99dB, 2.3kg	83.73

NTR NEO, FTR, TN and TF series PA speakers, CDX Compression Drivers and Horns, call 01923-234050

FANE CHASSIS SPEAKERS

from 4th Jan 2011.

S.R.P.

Professional Series	4 ohm versions available on some models to special order	
Studio 5FR	5" 35w, 4,8,16Ω, 50-15kHz, 93dB, 1" coil, 18oz ferrite magnet, 1.37kg	90.87
Studio 5M	5" 50w, 8 & 16Ω, 900-8kHz, 100dB, 1" coil, 36oz ferrite magnet, 2.46kg	90.87
Crescendo 10MB	10" 300w, 8Ω, 48-4kHz, 96dB, 2.5" ali coil, 78oz ferrite magnet, 6.4kg	138.43
Crescendo 12MB	12" 300w, 8Ω, 45-3.5kHz, 97.5dB, 2.5" copper coil, 78oz ferrite mag, 6.7kg.....	138.75
Colossus 12MB	12" 450w, 8Ω, 40-3.5kHz, 98dB, 3" ali coil, 93oz ferrite magnet, 7.8kg	154.51
Colossus 15B-600	15" 600w, 8.4Ω, 40-3kHz, 99dB, 4" copper coil, 120oz ferrite mag, 12.4kg.....	202.93
Colossus 15XB	15" 800w, 8Ω, 40-1kHz, 99dB, 4" copper coil, 126oz ferrite magnet, 13.6kg	173.56
Colossus 18B	18" 400w, 4/8/16Ω, 35-1.5kHz, 99.3dB, 4" cop coil, 120oz ferrite mag, 12.7kg	192.59
Colossus 18B-600	18" 600w, 8.4Ω, 30-1kHz, 98dB, 4" copper coil, 148oz ferrite magnet, 13.6kg	226.88
Colossus 18XB	18" 800w, 8Ω s, 35-1kHz, 99dB, 4" copper coil, 126oz ferrite magnet, 14.2kg.....	201.13
Colossus 18-1000	18" 1000w, 4/8Ω, 27-1kHz, 98dB, 4" copper coil, 120oz ferrite mag, 14.5kg.....	293.11
Colossus 18-1500	18" 1500w, 8Ω, 25-300Hz, 97dB, 4" ali coil, 120oz ferrite magnet, 14.5kg.....	349.46

Please call for prices on Sovereign, Sovereign Pro, Professional, Neo Subwoofers, Medusa & Axiom Guitar and HF drivers

A-DESIGNS AUDIO	from 4th April 2012	S.R.P.
------------------------	---------------------------------------	---------------

Pacifica Mic Pre	1U stereo, custom in/out tx's, bal in/out, phase, pad, 48v, 9Hz-101kHz	1,762.80
MP-2A Mic Pre	2 channel valve mic pre, selectable tone switches, 60 dB gain, Jensen tx's.....	2,257.12
Ventura Pre/EQ - new	1U, mic, inst and e.q./insert inputs, 3 band para, ±30 VDC rails.....	1,762.80
P-1	Mic pre Module for API 500 Lunchbox, 48v, pad, phase, based on Pacifica.....	802.95
EM Silver	As above, steel output transformer - "a darker sound"	697.17
EM Red	As above, 50/50 output transformer - "up front mids"	697.17
EM Blue	As above, nickel output transformer - "airy highs"	697.17
EM Gold	As above, Red input & Silver output transformer – "dark with up front mids"	697.17
EM PEQ	Based on Pultec EQP-1A: 3 freq hi atten, 7 freq. para mid, 4 freq lo boost/cut.....	1,127.08
500HR	Mains powered 1U 2 space rack for P1 and all EM series modules, API-approved.....	436.78
EM-EQ2 - new	2 chan 2U rackmount version of the EM PEQ above	2,019.41
HM2EQ HAMMER	2U 2 chan valve equaliser, low, mid & high ±13dB, bypass, lo & hi cut switch.....	2,092.20
HM-2 NAIL	2U 2chan valve/hybrid tracking/bus compressor, Mix pot for parallel compression	2,166.64
REDDI	Valve DI box, 6N1P, jack/XLR input, 16dB gain, 20-60kHz ± 3dB, ground lift	672.32
Atty	Passive stereo level controller/line attenuator, dual in/out XLR's, mute button.....	107.78
ATTY2'D	1U 19" passive line level controller, 2 stereo pairs & 2 mono chans or 5:1, mute	583.13
LPV-1	Low profile video adapter, place video monitors anywhere on site.....	17.08
LP-9	Low profile adapter for RS232 or dB-9	17.08
LPA-1	Low profile adapter for DB-25's.....	17.08
LPA-1r	As LPA-1 but reversed terminal blocks	17.08

GALAXY HOT SPOT	From 4th July 2012	S.R.P.
------------------------	--------------------------------------	---------------

PA-6S	Powered Hot-Spot monitor, 170 watts, 3 band e.q. compressor/limiter, 80 Hz–18 kHz, SPL 118 dB, THD 0.5% @4 ohms, inputs: two x ¼" Bal/Unbal, two XLR 24V Phantom, one 1/8" Stereo Line In. Outputs: 2 x XLR thru, 1 x ¼" preamp	330.00
Cricket	Easy to use 2-piece send-and-receive Polarity/Continuity Test Set, internal mic in receiver, internal spkr in send unit, tests bal and unbal cables up to 610 metres (2,000 feet) in length, drives speakers directly, includes. 2 x 9v batteries. Save hours of troubleshooting	107.33
CM-150	CheckMate Battery-powered SPL Meter, 30-130dB range, resolution 0.1dB backlit display, RS-232 Interface, IEC 651 Type II, ANSI S1.4 Type II. Includes carrying case, calibration screwdriver, manual, 9-volt battery and windscreen	179.66

RAXX	Wall mounted 19" racking system	from 1st Aug 2012	S.R.P.
-------------	--	-------------------------------------	---------------

Starter Kit	2 x 6U uprights, 6 x 1U side arms, bolts, wall plugs, screws, wall template.....	60.54
UP6U	6U upright, including. 2 x wall plugs, 2 x screws, each	14.87
UP12U	12U upright, 4 x wall plugs and screws, each.....	27.15
End Caps	For all uprights, each.....	0.78
SA1U-250	Pair of 250mm 1U side arms, incl. 4 x M6 bolts.....	9.15
SA1U-400	Pair of 400mm 1U side arms, incl. 4 x M6 bolts.....	16.20
SA2U-400	Pair of 400mm 2U side arms, incl. 8 x M6 bolts.....	17.21
SA2U-600	Pair of 600mm 2U side arms, incl. 12 x M6 bolts.....	21.75
SA2U-VERT new	Pair of 2U side arms for hanging a 2U product (or 2 x 1U) vertically, parallel to wall	23.80
TOPPAN-250	Top or bottom security panel, 250mm deep.....	34.10
TOPPAN-400	Top or bottom security panel, 400mm deep.....	37.21
TOPPAN-600	Top or bottom security panel, 600mm deep.....	39.97
DISTRO-H4	Horizontal 1U rackmounting Mains Distro board, with 4 x 13-amp sockets.	32.35
DISTRO-H5/H6	As above but 5/6 13-amp sockets	34.99/37.58
DISTRO-V4	As above but Vertical mounting, 1.5U, 4 x 13-amp sockets.....	32.35
DISTRO-V8/V12	As above but 8/12 x 13-amp sockets	43.66/53.24
CT-1M Cable Tidy	25mm x 40mm, open slot fingers, snap-on lid, CSA elec. specs, per Metre	9.44

		Inc. Vat
<i>P.A. MIXER-AMPS</i> <i>all models have an Active Clip Limiter (ACL)</i>		
PA6/250	250 watts 6 channels, ch 1-4: combi XLR/jack, 3 band eq, rev & aux/monitor send. Ch 5-6: phono & jack line in, 2 band eq. Digital fx, line & aux in/out w vol, Speakons.....	399.00
PA6/600	600 watts as above	467.25
V12/500	Stereo rackmount 2u, 2x250 watts, 6 mics and 3 stereo lines, digital fx, fan	549.00
V12/1000	2 x 500 watts, as above.....	639.00
V12/1300	2 x 650 watts, as above.....	679.00
<i>CONSOLE AMPS</i>		
VP-1 500	2 x 250 watts VP-1 mixer amp in a console for laptop use. 4 bal mic inputs. 4 band e.q. fx level, low cut, PPL, mic mute. 3 stereo phono lines in on faders, lo, mid, hi. 80 x digital fx. Sleeved or lidded console, opt'l media player/twin UHF radio mics	539.00
VP-1 1000	2 x 500 watts as above.....	569.00
VP-1 1300	2 x 650 watts, as above.....	649.00
VP-1 1300 Compact	as above in lidded console, HDC 500 with f/s control & twin radio mic	1,123.00
	VP-1 Compact spec also available with VP-1 500 and VP-1 1000, add	454.00
<i>POWER AMPLIFIERS – all with ACL, RMS power quoted into 4 ohm load.</i>		
SS/200	2 x 100 watts slave, wood/carpet case, thermal cut, fan.....	299.25
SS/500	2 x 250 watts version of above.....	345.45
SS/1000	2 x 500 watts version of above.....	425.25
SS/1300	2 x 650 watts version of above.....	460.95
SA/200	2 x 100w, 1u rackmount , DC/short, fan, twin VU's.....	299.25
SA/500	2 x 250w, as above	345.45
MA/1300	2 x 650w,2U, ACL, fan, bal XLR/jack inputs, slave out, master vol, twin led VU's.....	481.07
MA/2000	2 x 1000w, as above	588.21
SXi 2000	As MA/2000 + 2 way variable crossover, assignable Hi or Lo pass on both chans.....	680.35
<i>DISCO AND KARAOKE SYSTEMS</i>		
MD12/650C	650w, ACL, fan, compact mono console, 1 mic+vox, 4 line in, monitor, VU	493.87
SD14 Mixer	2 x bal mic chans, separate e.q., 4 x music chans with graphic e.q., phones, VU's	not available
SD15 Mixer	Karaoke/Disco mixer, as above but 3 mic channels with digital effects	separately
SD14/500/C	Compact Series , 2 x 250w, console for laptop DJ's with SD14 mixer, fan.....	601.74
SD14/1000/C	As above but 2 x 500w	680.00
SD14/1300/C	As above but 2 x 650w	714.14
SD15/1000/C	Compact Series , 2 x 500w, carpet console for laptop DJ's with SD15 mixer, fan	717.55
SD15/1000/C	As above but 2 x 500w	783.39
SD15/1300/C	As above but 2 x 650w	827.66
SD Consoles 3U	Any SD console above, with CDMP-2700 / MIDI / USB / smd twin CD and twin UHF radio mic system, add	800.00
Flexilight	12v 60mA black Flexilight, 5 ultrabright leds, plugs into XLR socket.....	22.70
<i>1U RACKMOUNT MIXERS & MIXER-AMPS – all with Active Clip Limiter</i>		
BGM 100	Same as BGR 100 without led VU's	231.00
BGM 250	Same as BGR 250 without led VU's	262.50
BGR 100	1u, 100w, 2 mics with e.q. and vox, 3 line inputs with e.q., 12 led VU	244.65
BGR 250	1u, 250w as above	285.60
BGS 200 new	1u, stereo 2 x 100w, 3 mics, 3 line in, vox, twin VU's, fan	403.20
BGS 500 new	1u, stereo 2 x 250w as above.....	450.45
DA 200	1u, 100+100w Zoner - 1 stereo or 2 mono, 4 aux inputs + e.q, 2 mics + e.q. & vox remote & master vol, twin VU's	403.20
DA 500	1u, 250 +250w as above	450.45
KA 200	1u, 2 x 100w, 3 mics, 3 stereo lines, vox override, VU, 12 digital effects, Speakons.....	450.45
KA 500	1u, 2 x 250w as above.....	486.15
<i>2U ZONERS with 2 and 4 zones</i>		
Z2Z 1000	2x500w as above	568.88
Z2Z 1300	2x650w as above	613.98
Z4Z 400	4 x 100 watt zones, 4 aux inputs, remote vol & e.q, 1 mic & e.q, vox, expandable	569.00
Z4Z 1000	4 x 250 watt zones, as above	639.00
<i>SPEAKER SYSTEMS - all 8 ohms except where noted, and priced in PAIRS</i>		
<i>PS SERIES – full range – priced in pairs</i>		
PS 8/100P	100w 1x8" and HF horn, 12dB/oct crossover @ 2K5Hz, MDF painted black, trap	260.45
PS 10/350P	350w 1x10" and HF horn, 12dB/oct crossover @ 2K5Hz, MDF painted black, trap	386.81
PS 12/400P**	400w 1x12" and HF horn, 12dB/oct crossover @ 2K5Hz, MDF painted black, trap	546.56
PS 15/450P**	450w 1x15" and HF horn, 12dB/oct crossover @ 2K5Hz, MDF painted black, trap.....	635.97
	** Minimum 10 pieces	

FR SERIES – full range – priced in pairs

FR8/225	225w, 8" bass, HF Horn, 12dB/oct xover @ 2K5Hz, painted black trapezoidal	369.00
FR10/350	350w, 10" bass, HF Horn, 12dB/oct xover @ 2K5Hz, painted black trap.....	499.00
FR12/400	400w, 1 x lightweight 12", HF horn, 12dB/oct xover @ 2K5Hz, painted black trap	549.00
FR15/500	500w, 1 x lightweight 15", HF horn, 12dB/oct xover @ 2K5Hz, painted black trap	665.45

LF SERIES – subs and systems – priced in pairs

LF12/400 sub	400w, 12" bass sub, 12dB/oct xover @150Hz, painted reflex cab	559.00
LF12/400 system	800w, 4 ohm system: 2 x subs & 2 x FR12/400 cabs (FR10/350 or FR8/225 use sub xover)	1,108.00
LF15/500 sub	500w, 15" bass sub, 12dB/oct xover @150Hz, painted reflex cab	629.00
LF15/500 system	1000w, 4 ohm system: 2 x subs & 2 x FR15/500 cabs (FR12/400 or FR10/350 use sub xover)	1,228.00
LF18/600 sub	600w, 18" bass sub, 12dB/oct xover @150Hz, painted reflex cab, 8 ohms	779.00
LF18/600 system	600w, 8 ohm system: 2 x subs & 2 x FR12/400 cabs (must use sub xover)	1,328.00
LF18/1000 sub	1000w, 18" bass sub, 12dB/oct xover @150Hz, painted reflex cab, 4 or 8 ohms.....	999.00
LF18/1000 system	1000w, 4 or 8 ohm system: 2 x subs & 2 x MY12MH cabs (must use sub xover)	1,718.00

MYTEC SPEAKER SYSTEMS - all 8 ohms except where noted, and priced in PAIRS

M208/400 SUB	400w, 2x8" compact sub, 12dB/oct @ 200Hz, with FR8/225 painted reflex, 4 ohms	499.00
M208 SYSTEM	400w 4 ohms , pair of FR8/225 and pair of subs (uses sub inbuilt crossover).....	868.00
M210/600 SUB	600w, 2x10" compact sub, 12dB/oct @ 200Hz, with FR8/225 painted reflex, 4 ohms	759.00
M210 SYSTEM	600w 4 ohms , pair of FR8/225 and pair of subs (uses sub inbuilt crossover).....	1,128.00
M212/800 SUB	800w, 2x12" compact sub, 12dB/oct xover @ 200Hz, with FR10/300, 4 ohms	799.00
M212 SYSTEM	600w 4 ohms , pair of FR10/300 and pair of subs (uses sub inbuilt crossover).....	1,298.00
M215/1000 SUB	1000 w, 2x15" compact sub, with MY12MH as mid-hi, painted reflex cab, 4 ohms	1,149.00
M215 SYSTEM	1000w 4 ohms , pair of MY12MH and pair of subs (uses sub inbuilt crossover)	1,868.00

MYTEC/LF/DISCO COVERS – Priced EACH

08-C	Heavy duty padded cover for Mytec 210 System Mid-Hi cabinet	12.00
10-C	Heavy duty padded cover for Mytec 212 System Mid-Hi cabinet and PS10-350.....	14.00
12-C	Heavy duty padded cover for Mytec 215 System Mid-Hi cab, 12/400	20.00
15-C	Heavy duty padded cover for Mytec 15/500 neo and powered 15/450 cab.....	22.00
208 SUB-C/210 SUB-C	HD padded cover for 208 sub/210 sub.....	17.60/20.00
212 SUB-C	HD padded cover for 212 sub.....	22.00
LF12/400 sub-C	HD padded cover for LF12 sub	20.00
LF15/500 Sub-C	HD padded cover for LF15 sub	25.00
DISCO COMPACTS	HD padded cover for MD12, SD14, SD15 compact consoles	16.50
DISCO COMPACTS 2U	HD padded cover for SD14, SD15, compact consoles with 2U slot for media player.....	18.00
V12 COMPACTS	HD padded cover for VP-1 and 12 series compact consoles.....	16.50

ACCESSORIES

1U Amp Sleeve	Black texture painted MDF sleeve with integral side handles (no lid).....	39.00
2U Amp Sleeve	Black texture painted MDF sleeve with integral side handles (no lid).....	49.00
100-VL	100 watt 100 volt line transformer in metal case with terminal block	65.00
250-VL	250 watt 100 volt line transformer in metal case with terminal block	72.00
2100-VL	2 x 100w 100v line transformers in metal case with terminal block	96.00
2250-VL	2 x 250w 100v line transformers in metal case with terminal block	119.00
Mytec MH leads	Pair of mid-high speaker leads for Mytec speakers; 3 metres 4 pole to 2 pole Speakon.....	26.00
Speaker Brackets	Heavy duty tilt/swivel brackets, max 34Kg, price each	16.00
Remote VC 1G	Remote vol control for all zoner amps, single gang, top panel & surface mount wall box	22.00
Remote VC 2G	Remote vol control for all zoner amps, dual gang, top panel & surface mount wall box.....	24.00

ATM CABLES Please order multicore cable in multiples of 10 metres. from 1st June 2011 **DEALER S.R.P.**

ATMIC	Balanced Mic 6.35mm dia, OFC lap screen, PVC jacket, blk, red, grn, blu, yellow.	1.53
PATCH	Patch & light duty mic cable, 4.4mm, fits Bantam jack plugs, black/red/.....	1.86
STARQUAD	Starquad mic cable, lapped screen, black, blue or red, per metre	1.74
UNI-1-ES	Single pair 2.4mm multicore, foil screen, individ jacket, numbered, per metre	0.62
UNI-2-ES	2 pair digital & analogue m/core, OFC, lamin. aluminium foil shield, blk, per mtr.....	2.61
UNI-4-ES	4 pair as above, diameter 10.1mm, per metre.	4.48
UNI-8-ES	8 pair, as above, diameter 14mm, per metre	8.34
UNI-12-ES	12 pair as above, diameter 16mm, per metre, also ATM analogue touring grade.....	12.79
UNI-16-ES	16 pair as above, diameter 17.8mm, per mtr, also ATM analogue touring grade	16.23
ATM-24-ES	24 pair analogue, 20.5mm, installation/touring per metre	23.87
UNI-32-ES	32 pair as above, diameter 22.5mm, per metre.....	34.98
UNI-40-ES	40 pair as above, diameter 25mm, per metre	38.61
UNI-48-ES	48 pair as above, diameter 27mm, per metre	43.56

CS-UNI-1	Contractor series instal signal cable, blk, grey,red,violet,white, per metre.....	0.62
SPL 0.75-2	2 core 0.75mm OFC speaker cable , black, diameter 6mm, per metre	0.84
SPL 1.5-2	2 core 1.5mm as above, diameter 6mm, per metre	1.39
SPL 2.5-2	2 core 2.5mm as above, diameter 8.5mm, per metre	2.28
SPL 4.0-2	2 core 4.0mm as above, diameter 10.7mm, per metre.....	3.80
SPL 1.5-4	4 core 1.5mm as above, diameter 8mm, per metre	3.00
SPL 2.5-4	4 core 2.5mm as above, diameter 10.2mm, per metre.....	4.26
SPL 4.0-4	4 core 4.0mm as above, diameter 12.8mm, per metre.....	6.59
SPL 2.5-8	8 core 2.5mm speaker cable, black, diameter 15.5mm, per metre	9.00
CS-0.75-2	Lo smoke zero halogen Contractor series 2 x 0.75mm speaker cable , blk/white	1.10
CS-1.5-2	As above, 2 x 1.5mm.....	1.85
CS-1.5-4	As above, 4 x 1.5mm.....	3.54
CS-2.5-2	As above, 2 x 2.5mm.....	3.06
CS-2.5-4	As above, 4 x 2.5mm.....	5.34
Also available:	Video & RF coax cable, Data CAT5E, CAT 6, High Perf digi/ana 4,8,16,24 m/core .. POA	POA
	Looms and complete multicore systems	P.O.A.

A Quick look at MTR Products



HPA-2 2 Channel Headphone Amplifier



HPA-6 6 channel Headphone Amplifier



DI-1 & DI-2P Passive D.I. Boxes



DI-3, DI-2 Active DI Boxes

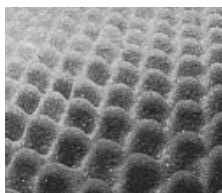


PPS-48 4 ch 48v Phantom Power Supply

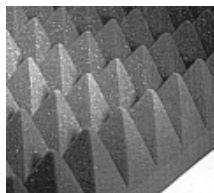


DC-8DUAL, DC-412 Keyboard Power Supplies

Proline 143/173/193



Studioline 253/273/293



Acoustic Foam Sound Absorption Panels



PS-4, PS8, PS-4v, PS-8v Passive Splitters