

# Zhengzhou Yalong Product Catalog

Yalong Pultrusion fiberglass profile including:

fiberglass rod, tube, channel, angle, I beam, square & rectangular tube, window&shutter profile, etc.



Zhengzhou Yalong Pultrex Composite Materials Co., Ltd

Email: kuoally@gmail.com, Phone: 86-13523592773, www.ylfrp.com

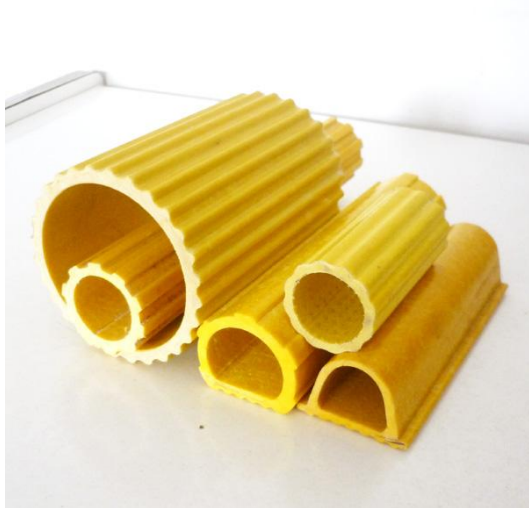


# Pultrusion FRP Rod



item	Diameter (mm)	Weight(kg/m)
Rod	6.9	0.077
	7.3	0.083
	7.9	0.1
	8.5	0.116
	9.5	0.145
	10	0.16
	11	0.194
	12	0.231
	12.7	0.259
	16	0.395
	18	0.51
	25	0.95

# Pultrusion Fiberglass Tube



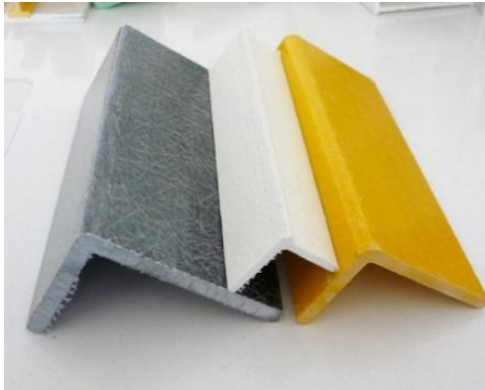
item	OD*ID(mm)	Weight(kg/m)
FRP round Tube	6.9*3.2	0.058
	7.3*5.3	0.039
	7.9*3.5	0.076
	8.5*3.5	0.088
	9.5*4.0	0.114
	11*5.0	0.148
	12.7*8.0	0.15
	18*11	0.308
	25*21	0.28
	30*24	0.43
	30*25.2	0.38
	30*22	0.59
	40*34	0.615
	40*30	0.97
	45*39	0.77
	50*42	1.02
50*45	0.6	
51*45	0.75	

# Pultrusion Fiberglass Channel



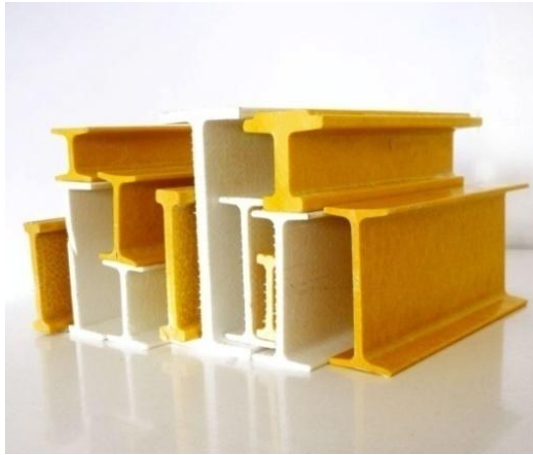
item	Size(mm)	Weight(kg/m)
GRP Channel	50*32*5	0.98
	55*25*3.5	0.61
	55*28*4	0.79
	70*30*3.8	0.87
	70*30*4.5	1.02
	80*30*3.5	0.87
	80*30*4.5	1.1
	88*35*5	1.5
	94.5*20*2.8	0.67
	180*50*6	2.95
	180*50*8	4.05

# Pultrusion Fiberglass Angle



item	Size(mm)	Weight(kg/m)
FRP Angle	20*20*2	0.21
	30*25*3	0.29
	40*40*5	0.7
	40*60*5	0.87
	42*47*2.3	0.42
	60*60*6	1.2
	76*50*6.35	1.35

# Fiberglass I Beam



item	Size(mm)	Weight(kg/m)
"I" Beam (high*width*thickness)	25×15×3.5	0.31
	25×30×3.6	0.47
	38×15×3.5×4	0.43
	38×15×4.5×5.5	0.6
	40×30×3.6	0.58
	40*40*5	1.15
	50*15*4	0.52
	58×15×4.5×5	0.68
	58×15×5×6	0.75
	65×30×3.6	0.76
	70×15×4.5×6	0.86
	80×15×4.5×5	0.9
	80×30×4.	0.93
	110×50×4	1.98

# Rectangular tube



item	Size(mm)	Weight(kg/m)
frp Rectangular tube	19*19*2.6	0.31
	35*22*3	0.53
	30*20*2.5	0.37
	50*30*4	1
	50*50*4	1.3
	60*32*3.5	1.09
	64*26*3.5	1.02
	65*31*4	1.32
	76*51*4	1.72
	110×50×4.5×4	2.35

# Flat Strips



item	Size(mm)	Weight(kg/m)
flat strips	30*4	0.24
	50*3	0.25
	64*6	0.75
	150*4	1.09

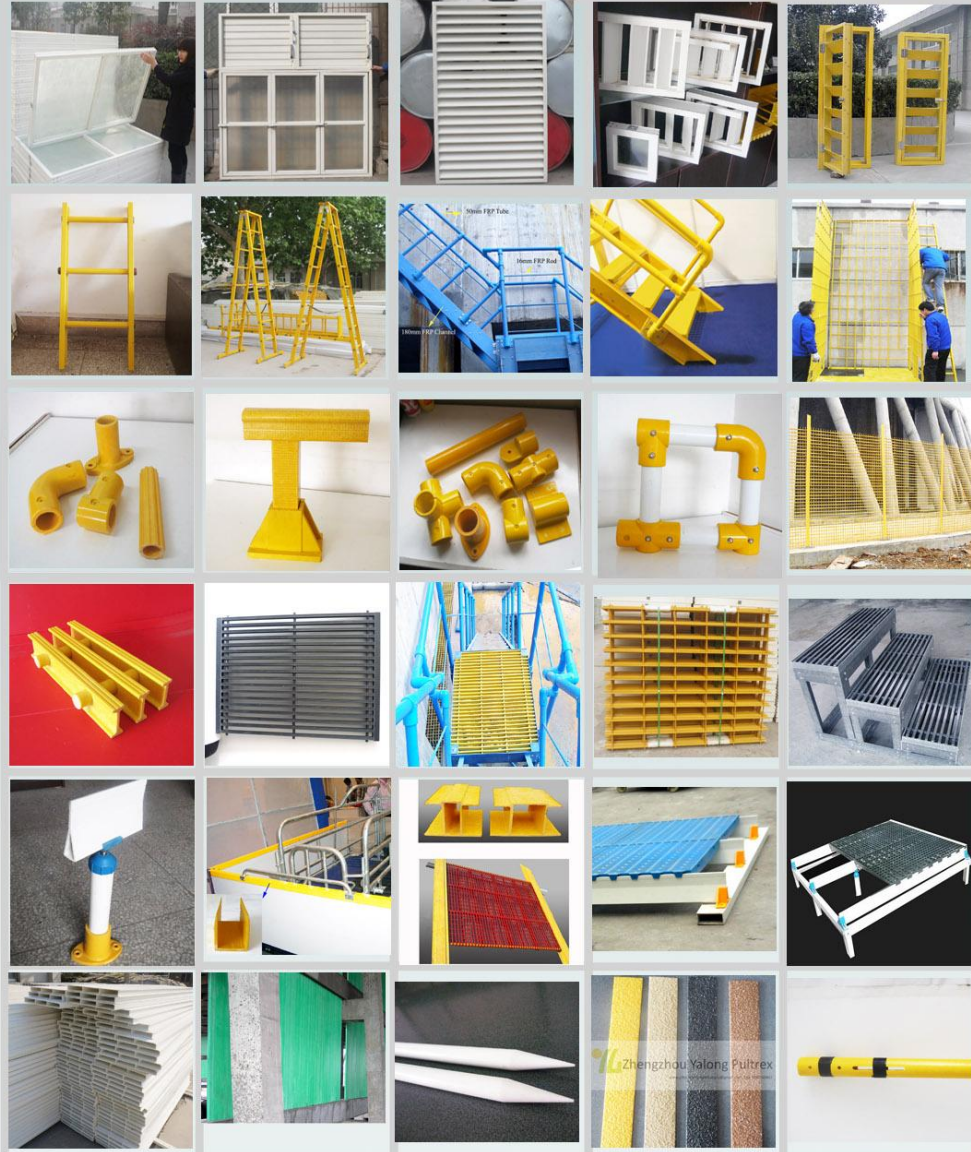




# Assembling product

## Above profile generally be assembled to:

- Fiberglass window and shutter
- Pultruded Fiberglass Grating
- Fiberglass guardrail handrail fence
- Fiberglass ladders and stairs
- Cooling tower FRP components:
  - filler supports, anti-freeze board
  - grating walkway
- Fiberglass Structure and support



# Fiberglass handrails



Fiberglass handrail mainly used for require non-electric conductive, corrosive environment, such as chemical plant, power plant, etc.



# Fiberglass windows/shutter



Popular for Aluminum or copper smelter potroom, chemical plant, etc



# Fiberglass grating



Item	Deep(A) inch	Top edge(B) mm	bottom edge(D) mm	clearance width(C) mm	Open area %	Estimated weight kg/m2
5024	1	30	30	30	50	10
4025	1	15	15	10	40	17
5025	1	15	15	15	50	13.5
6025	1	15	15	23	60	10
4038	1.5	15	15	10	40	26
5038	1.5	15	15	15	50	22
6038	1.5	15	15	23	60	13
4040	1.6	40	20	27	40	19
5040	1.6	40	20	40	50	17
6040	1.6	40	20	60	60	14
4040i	1.6	30	30	20	40	14
5040i	1.6	30	30	30	50	12
6040i	1.6	30	30	45	60	10
6050	2	15	15	23	60	16
4058	2.2	15	15	10	40	32
5058	2.2	15	15	15	50	27
6058	2.2	15	15	23	60	22
4065	2.5	30	30	20	40	17
5065	2.5	30	30	30	50	15
6060	2.5	30	30	45	60	12

No limitation for Length and colors, custom size is also accepted, welcome contact us freely.  
Zhengzhou Yalong Pultrex Composite Material Co., LTD [www.en.ylfrp.com](http://www.en.ylfrp.com) [allykuo@ylfrp.com](mailto:allykuo@ylfrp.com)

# Yalong FRP Grating Applications



**Electric substation flooring**



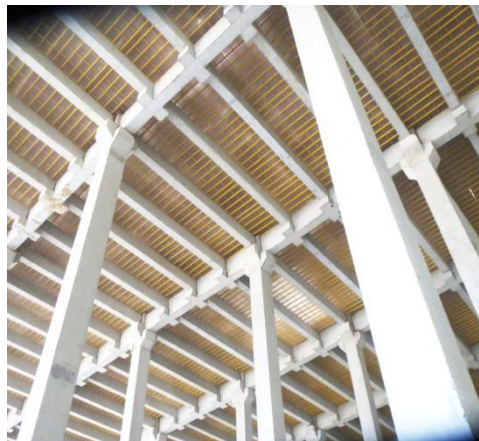
**Industrial platform and walkways**



**Food Manufacturing**



**FRP Stair and Handrail systems**

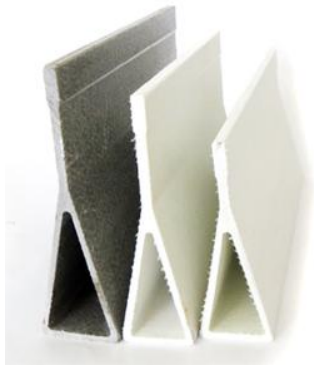


**Cooling tower filler supports**



**Trench cover**

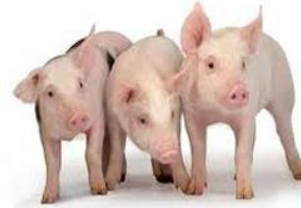
# Fiberglass beam for poultry/pig farm



**Strong! Durable!**

Fiberglass Beam

For Poultry Pig Floor Support



item	H*W*Top thickness mm	Weight(kg/m)
FRP Beam for plastic slats support	100*32*5.5mm	1.15
	120*32*5.5mm	1.38
	135*36.8*5.6mm	1.48
	120*30*5.5mm	1.56



# Packing and shipping



[www.ylfrp.com](http://www.ylfrp.com) Email: [kuoally@gmail.com](mailto:kuoally@gmail.com), QQ: 1509530861

Still many other customized fiberglass product,  
contact us for details:

Email: [kuoally@yalongfrp.com.cn](mailto:kuoally@yalongfrp.com.cn)

phone: 86-371-67981056 Mobile: 86-13523592773

Fax: 86-371-67988373

Website: [www.en.ylfrp.com](http://www.en.ylfrp.com) / <http://zzyalong.en.alibaba.com>

