



Getwell Group of Companies

Getwell Oncology Pvt. Ltd.

Corporate Office:
464, Udyog Vihar, Phase-V,
Gurgaon-122 016, Haryana. INDIA.

Phone +91 - 124 - 4477981/82
Fax : +91 - 124 - 4477986
www.worldofgetwell.com

Getwell Pharmaceuticals

Manufacturing Facility:
474, Udyog Vihar, Phase-V,
Gurgaon-122 016, Haryana. INDIA.

Phone +91 - 124 - 4014 403/04,
Fax : +91 - 124 - 4012 497
www.worldofgetwell.com

PRODUCT VISUAL GUIDE





I-DOX[®]

Doxorubicin Hydrochloride Liposome Injection
(As Pegylated Liposome)

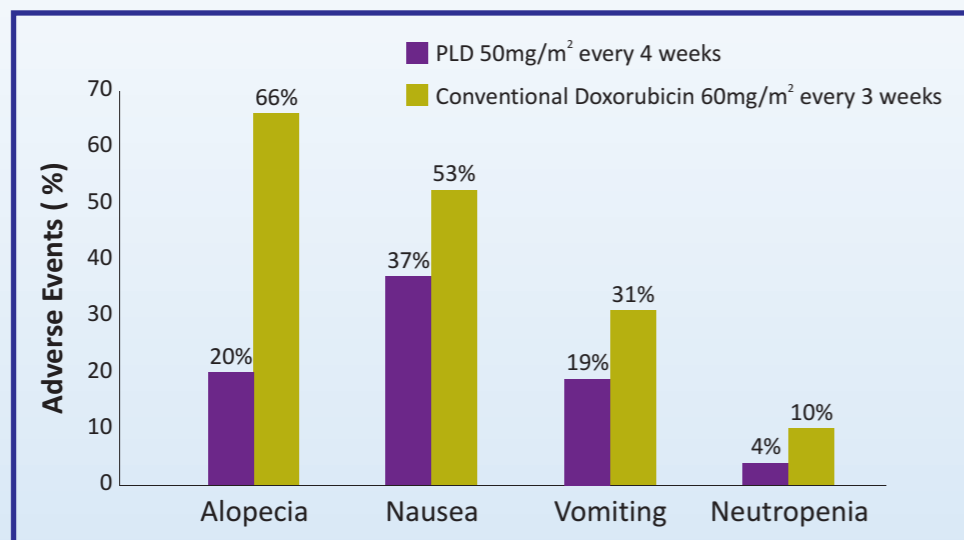


Strengths – 20mg/10ml, 50mg/25ml

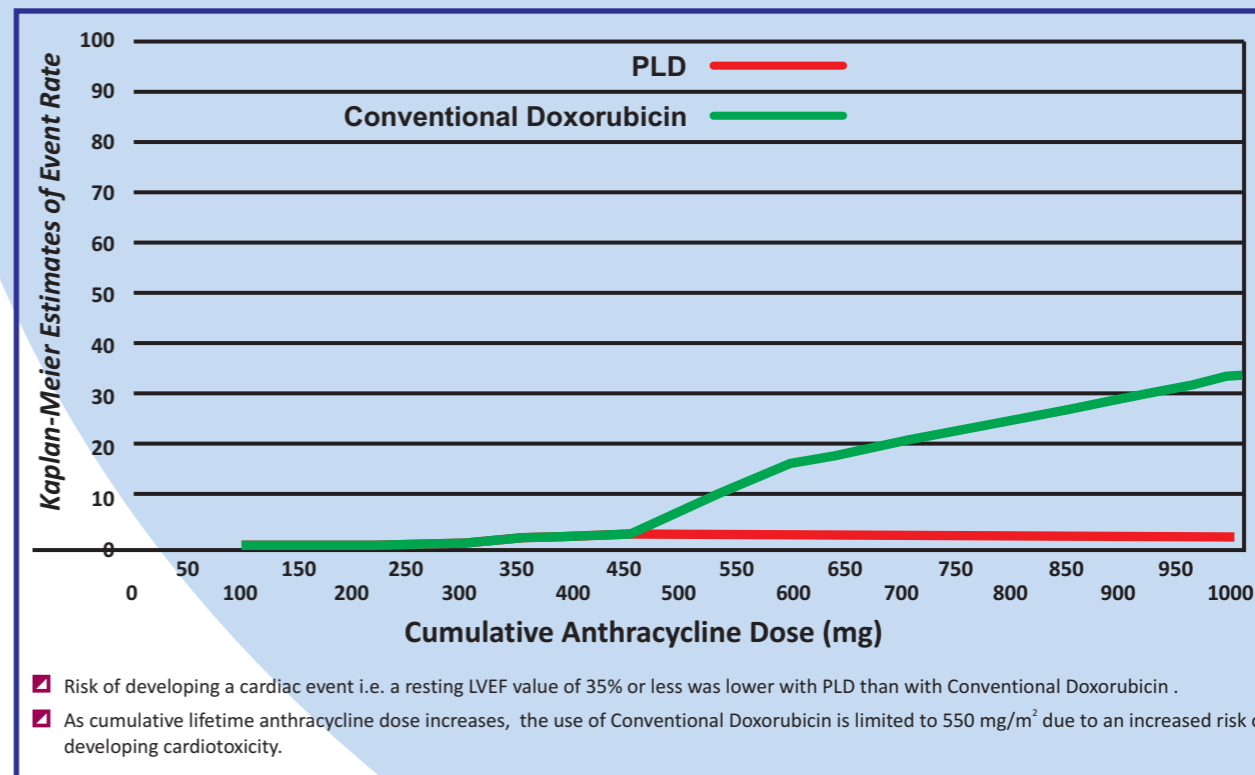
It is Indicated :-

- For **metastatic carcinoma of the ovary**, in patients with refractory disease to both paclitaxel and platinum based chemotherapy regimen.
- For the treatment of **AIDS related Kaposi's sarcoma** in patients showing disease progression.
- For the treatment of **Multiple Myeloma** in combination with bortezomib in patients who have not previously received bortezomib and have received at least one prior therapy.
- For the treatment of **metastatic Breast Cancer** patients with increased cardiac risk.

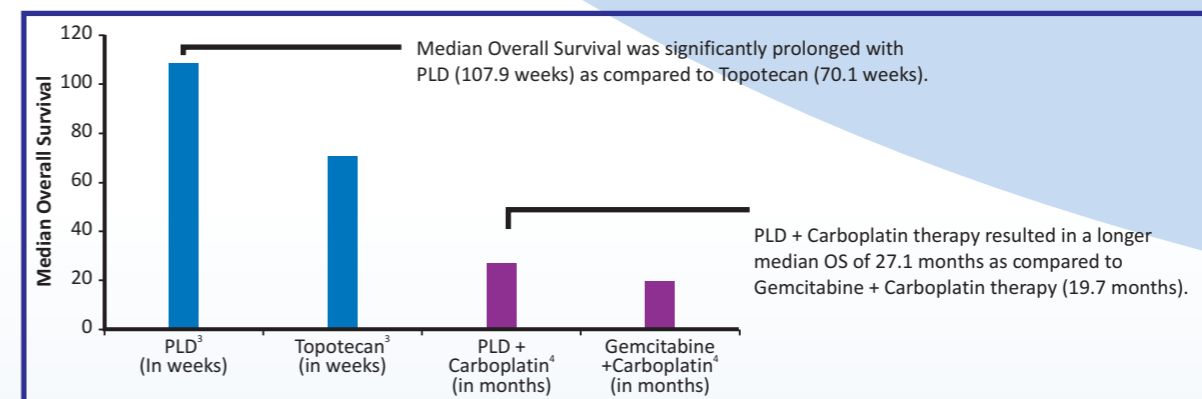
ADVERSE EVENTS OF PLD VS CONVENTIONAL DOXORUBICIN¹



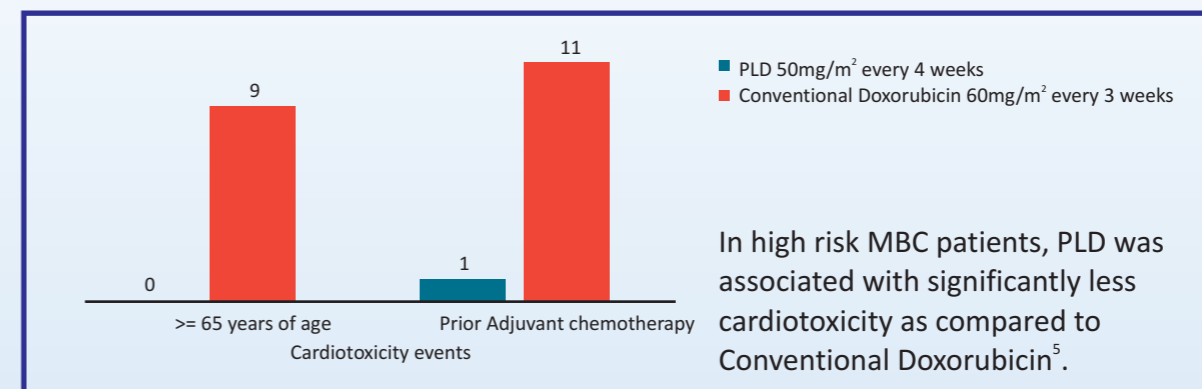
RATE OF CARDIAC EVENTS (DEFINED AS LAST LVEF < 35%) VS CUMULATIVE ANTHRACYCLINE DOSE²



PLD IS THE DRUG OF CHOICE IN PLATINUM SENSITIVE RECURRENT OVARIAN CANCER⁴



PLD IS THE DRUG OF CHOICE IN HIGH RISK METASTATIC BREAST CANCER PATIENTS⁵



References:

1. Annals of Oncology 15:440-449,2004
2. Stephen R D Johnston, "Caelyx (Pegylated Liposomal Doxorubicin Hydrochloride) - A Novel Anthracycline," cited at http://www.touchbriefings.com/pdf/26/ept032_t_schering2.pdf
3. Gynecol Oncol. 2004; 95: 1 – 8
4. Oncologist. 2010; 15(10):1073 - 82
5. Annals of Oncology 15: 440 - 449, 2004

BENDAWELTM

Bendamustine Hydrochloride
for Injection (Lyophilized)

Strength – 100mg

It is indicated :-

- For the treatment of patients with chronic lymphocytic leukemia. Efficacy relative to first line therapies other than chlorambucil has not been established.
- For the treatment of indolent B-cell non-Hodgkin lymphoma that has progressed during or within six months of treatment with rituximab or a rituximab containing regimen.



PEMETRATM

Pemetrexed for Injection
(Lyophilized)

Strengths – 100mg, 500mg

It is indicated :-

- As a single agent for the treatment of patients with advanced non-squamous non-small cell lung cancer (NSCLC), after prior chemotherapy.
- For the treatment for malignant pleural mesothelioma along with cisplatin, when surgery is not an option.



PACLIWEL®

Paclitaxel Injection

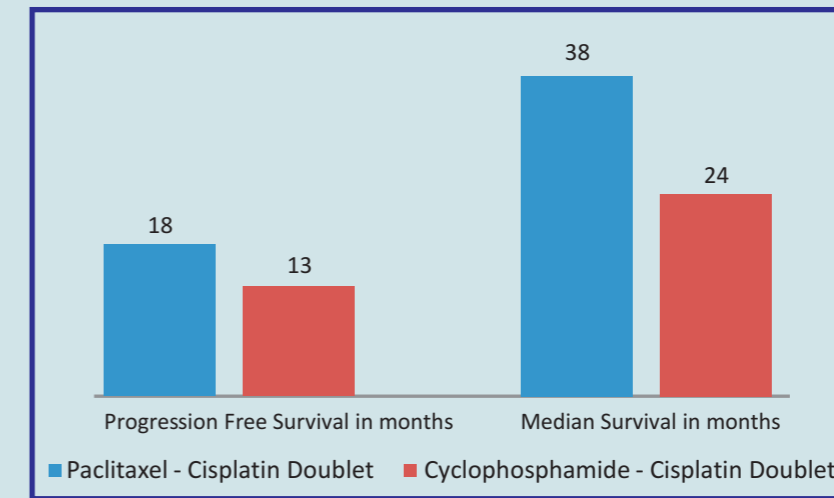
Strengths – 30mg / 5ml, 100mg / 16.7ml, 260mg / 43.4ml, 300mg / 50ml

It is indicated :-

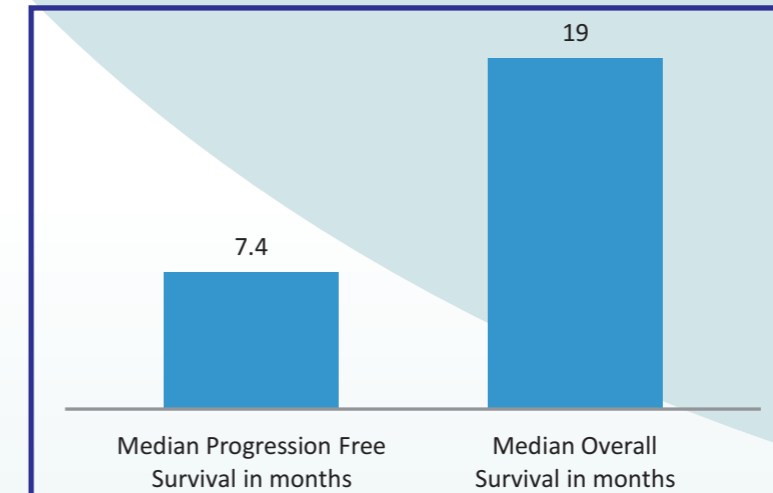
- As **first line** and subsequent therapy for the treatment of **advanced carcinoma of the ovary**.
- For the **adjuvant treatment of node-positive breast cancer** administered sequentially to standard doxorubicin containing combination chemotherapy.
- In combination with Cisplatin is indicated for the **first line** treatment of **NSCLC** cancer in patients who are not candidates for potentially curative surgery or radiation therapy.
- For the **second-line** treatment of **AIDS related Kaposi's sarcoma**.



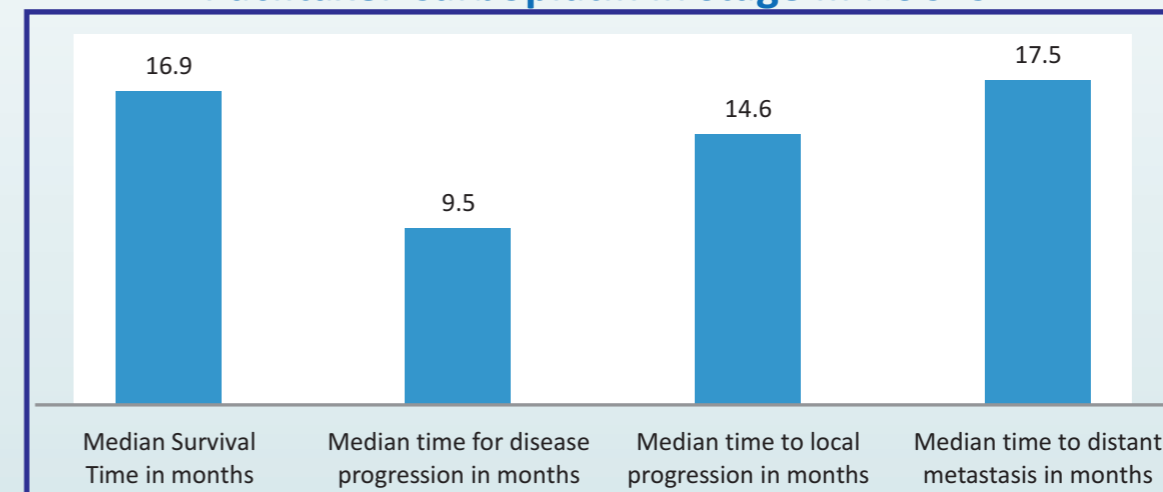
Paclitaxel in Stage III & IV Ovarian Cancer¹



Weekly Paclitaxel/Gemcitabine in Metastatic Breast Cancer or Locally advanced Breast Cancer²



Induction Paclitaxel- Carboplatin followed by concurrent radiation therapy and weekly Paclitaxel and consolidation Paclitaxel-Carboplatin in stage III NSCLC³



Reference

1. International Journal of Women's Health 2010:2411-427
2. Jpn J Clin Oncol. 2011 Apr;41(4):455-61
3. J Thorac Oncol. 2011 Jan;6(1):79-85.

TAXEWELL®

Docetaxel Injection Concentrate with Solvent

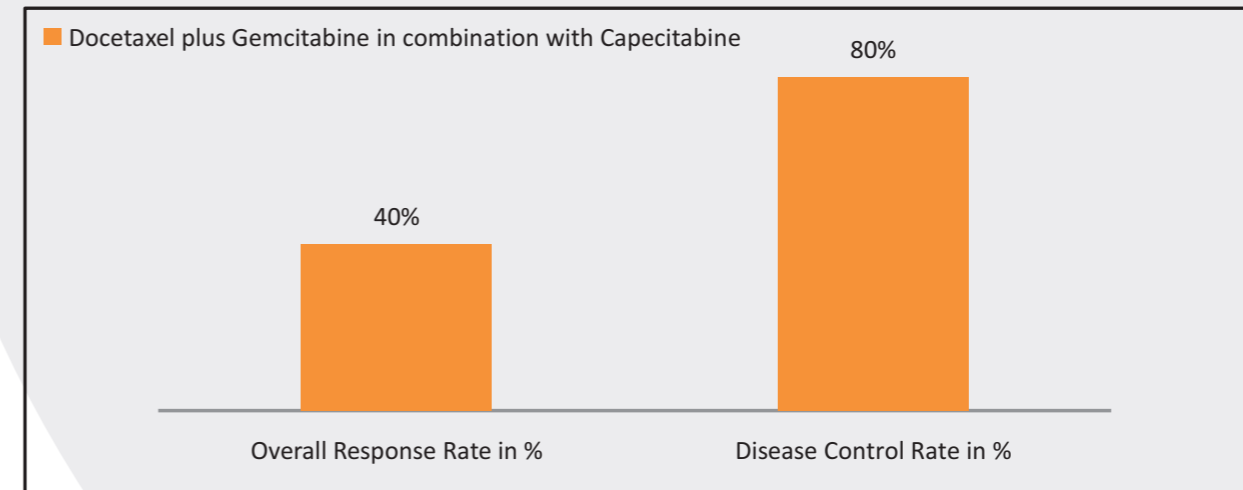
Strengths – 20mg / 0.5ml, 80mg / 2ml, 120mg / 3ml

It is indicated for the treatment of :-

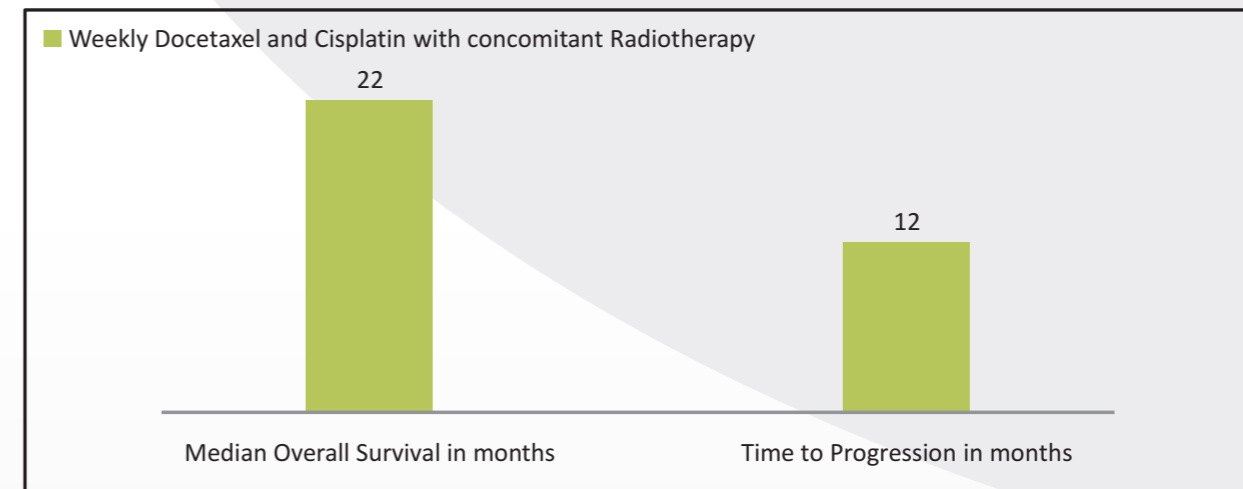
- **NSCLC**
- **Metastatic Breast Cancer**
- **Hormone Refractory Prostate Cancer (HRPC)**
- **Gastric Adenocarcinoma (GC)**
- **Squamous Cell Carcinoma of the Head and Neck Cancer (SCCHN).**



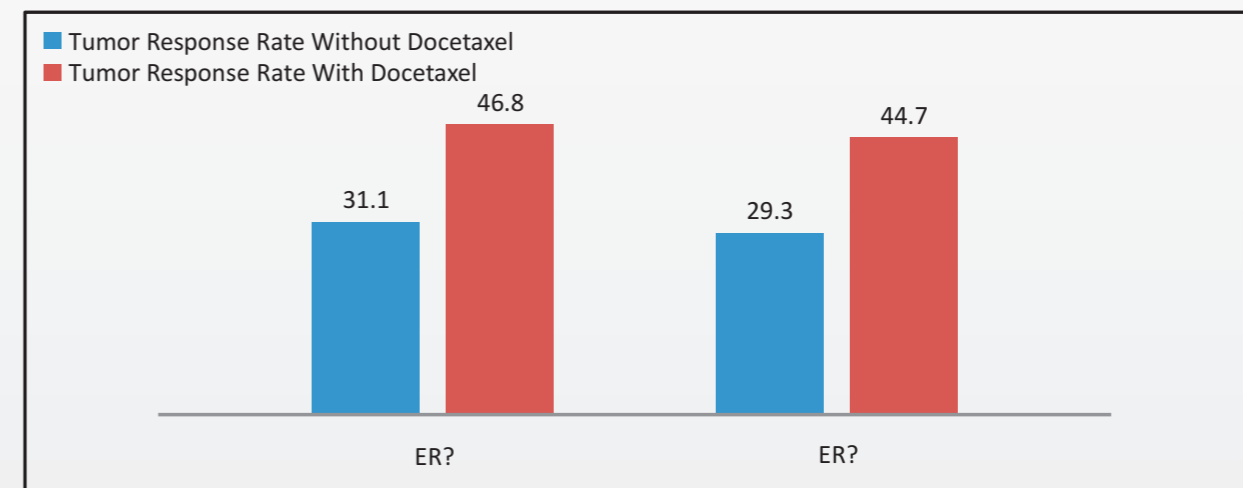
Inoperable Pancreatic Cancer¹



Stage III NSCLC²



Docetaxel produces a higher response rate in both ER⁺ & ER⁻ Metastatic Breast Cancer Patients³



Reference

1. Cancer Chemother Pharmacol. 2011 Aug 20.
2. Cancer Chemother Pharmacol. 2011 Apr 17.
3. The Oncologist 2010; 15:476-483

DOCETEL™

Docetaxel for Injection
(Lyophilized) with Diluent

Strengths – 20mg, 80mg, 120mg

It is indicated for the treatment of :-

- **NSCLC**
- **Metastatic Breast Cancer**
- **Hormone Refractory Prostate Cancer (HRPC)**
- **Gastric Adenocarcinoma (GC)**
- **Squamous Cell Carcinoma of the Head and Neck Cancer (SCCHN).**

Salient Features:

- **Better storage & stability** than conventional formulation, thereby **improving efficacy.**
- **Improved solubility**, thereby **reducing the reconstitution time with minimal efforts.**



EPIRUBA™

Epirubicin Hydrochloride
for Injection (Lyophilized)

Strengths – 10mg, 50mg

It is indicated :-

- As a component of adjuvant therapy in patients with evidence of **axillary node tumor involvement** following resection of primary **breast cancer.**
1. **65%** of patients with **Invasive Breast Cancer** achieved a **complete response** which enabled them to **undergo breast conserving surgery** after being undergone treatment with **Paclitaxel and Epirubicin**¹.
 2. Epirubicin plus CMF (Cyclophosphamide, Methotrexate and Fluorouracil) is superior to CMF alone as adjuvant treatment for early breast cancer with **Relapse-free and overall survival rates being significantly higher in the Epirubicin–CMF groups than in the CMF-alone groups**².
 - **2-year relapse-free survival, 91% vs. 85%**
 - **5-year relapse-free survival, 76% vs. 69%**
 - **2-year overall survival, 95% vs. 92%**
 - **5-year overall survival, 82% vs. 75%**



References:

1. Clin Drug Invest. 2006; 26(12):691-701
2. N Engl J Med 2006; 355:1851-1862

DOCETEL

EPIRUBA

GEMWEL™

Gemcitabine for Injection (Lyophilized)

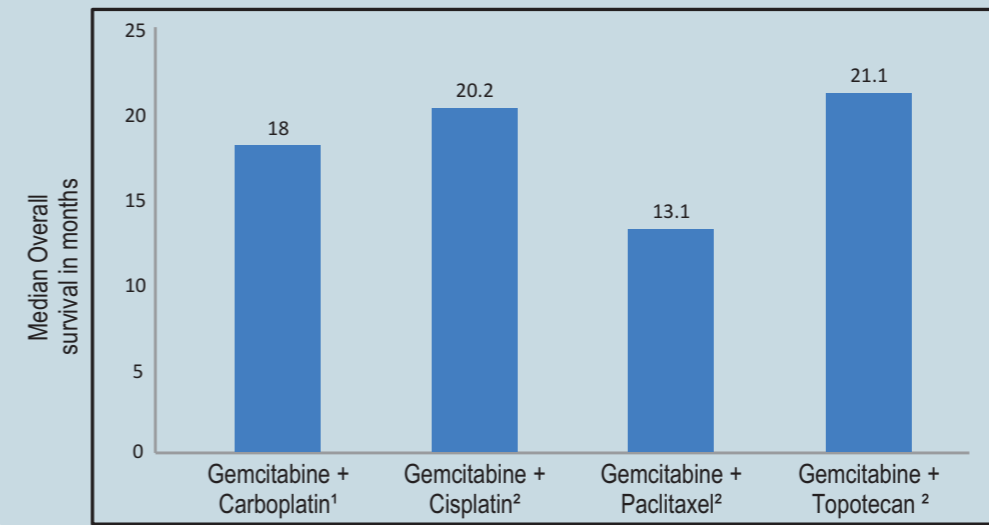
Strengths – 200mg, 1gm

It is indicated :-

- For the treatment of **relapsed advanced ovarian cancer** in combination with Carboplatin.
- In combination with Paclitaxel for the **first-line treatment of metastatic breast cancer** patients after failure of prior anthracycline containing adjuvant therapy.
- In combination with Cisplatin for the **first-line treatment of inoperable, locally advanced (Stage IIIA or IIIB) or metastatic (Stage IV) non-small cell lung cancer.**
- For the **first-line treatment of locally advanced or metastatic Adenocarcinoma of the pancreas.**



Gemcitabine combinations in Recurrent Ovarian Cancer



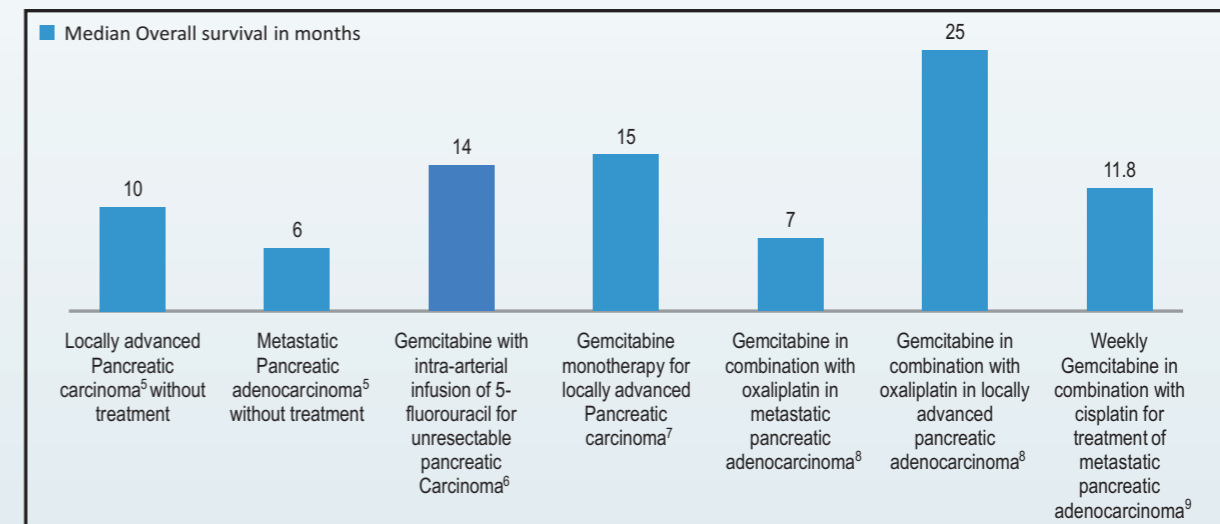
Gemcitabine in Advanced Stage NSCLC³

	Overall Survival in Adenocarcinoma in months	Overall Survival in Squamous cell carcinoma in months	Overall Survival in Large cell carcinoma in months
Gemcitabine /CDDP	8.1	9.4	9.7
Paclitaxel/CDDP	9.1	6.9	6.1
Docetaxel/CDDP	7.7	8.1	6.8

Gemcitabine combinations in patients with pretreated MBC

	Overall Response rates	Median Progression Free Survival in months	Median Survival times in months
Gemcitabine - Vinorelbine	39%	5.7	17.5
Gemcitabine - Cisplatin	47.70%	6.9	13
Gemcitabine - Capecitabine	34.70%	8.3	19.4

Gemcitabine in Pancreatic Cancer



Reference

- Annals of Oncology 12: 1115-1120, 2001.
- Annals of Oncology 17 (Supplement 5); v188-v194, 2006
- Clinical Medicine Insights: Oncology 2011;5: 177-184
- Br J Cancer. 2011 Mar 29;104(7):1071-8.
- Hu et al. Journal of Hematology & Oncology 2011, 4:11
- Pancreas. 2005 Apr;30(3):223-6.
- Jpn J Clin Oncol. 2010 Jun;40(6):573-9
- Gastroenterol Clin Biol. 2005 Oct;29(10):1006-9.
- Pancreatology. 2006;6(6):635-41.

NEOMIB[®]

Bortezomib for Injection (Lyophilized)

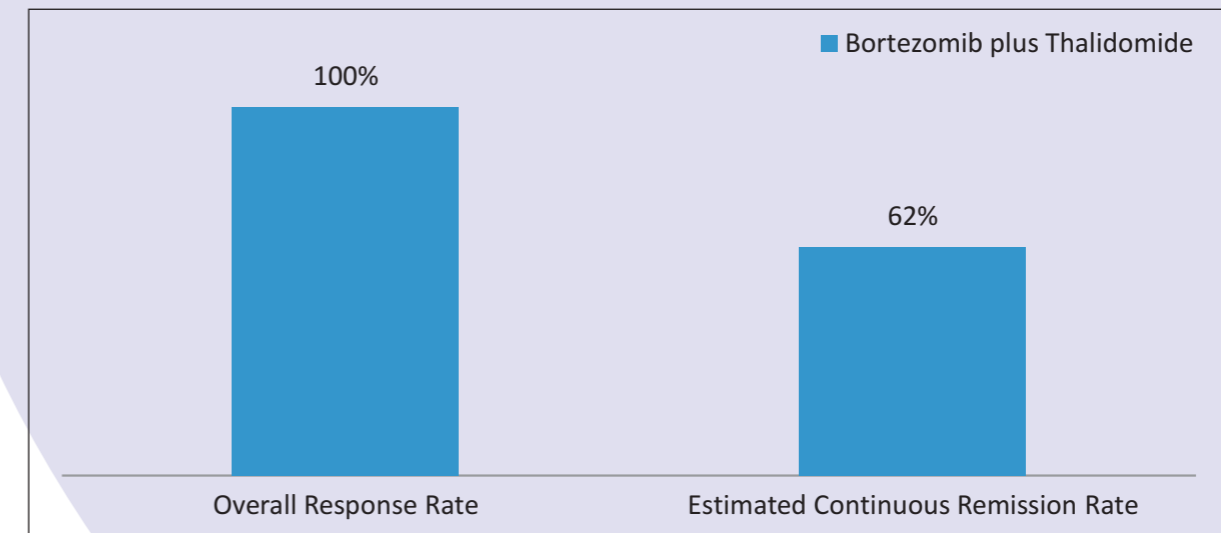
Strengths – 2mg, 3.5mg

It is indicated :-

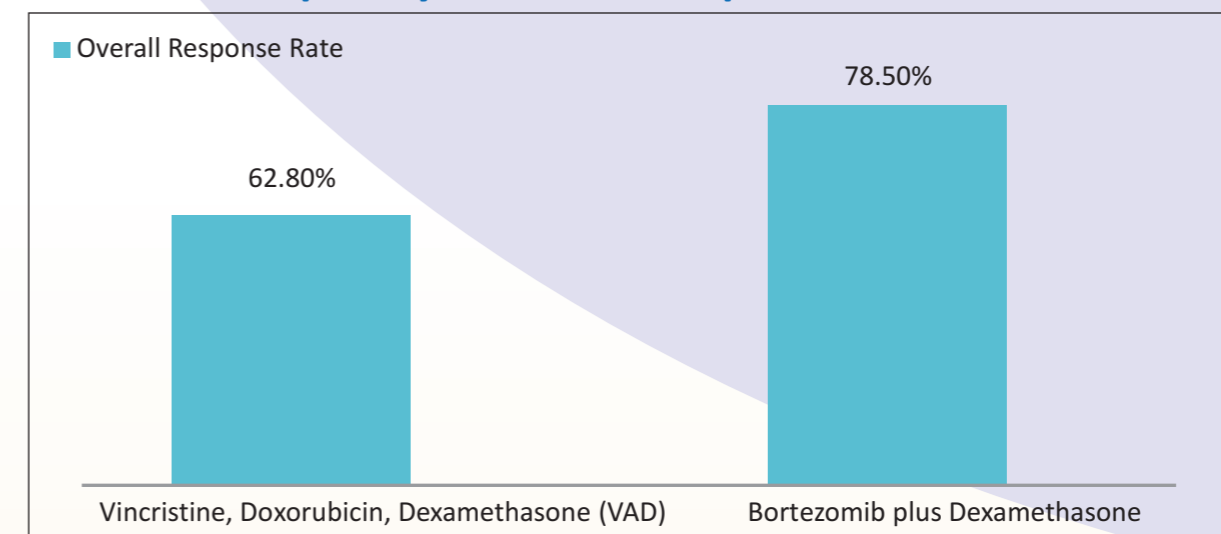
- In the treatment of **Multiple Myeloma**.
- In the treatment of **Mantle Cell Lymphoma** who have received at least 1 prior therapy.



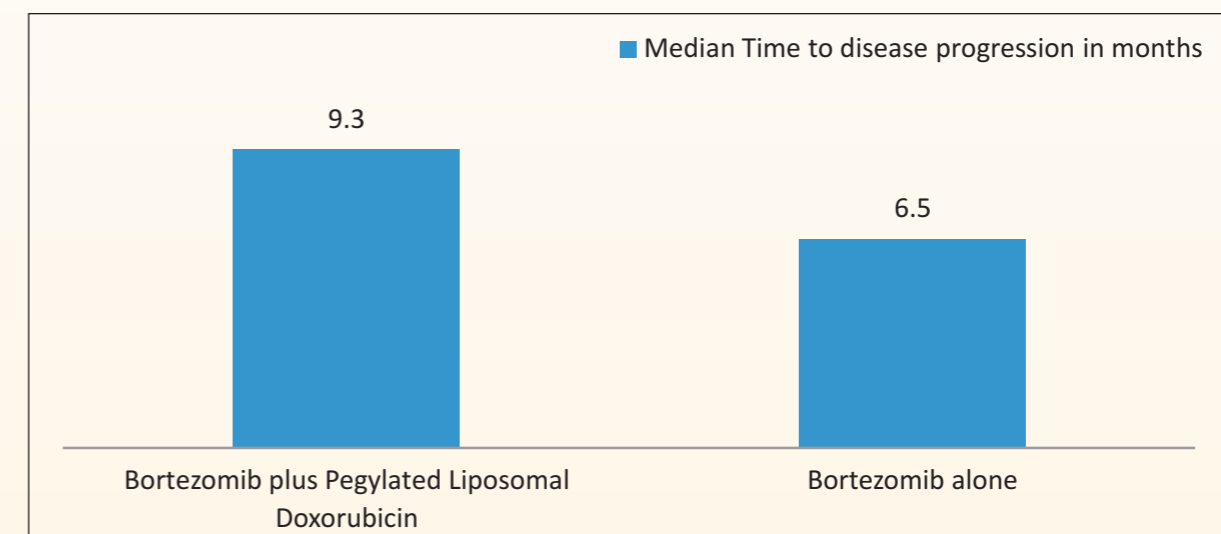
Newly Diagnosed Multiple Myeloma¹



Preferred Primary Therapy regimens for Multiple Myeloma in transplant candidates²



Treatment of Progressive or Relapsed Myeloma³



Reference

1. Zhonghua Nei Ke Za Zhi. 2011 Apr;50(4):291-4.
2. J Clin Oncol 2010; 28: 4621-4629
3. J Clin Oncol 2007; 25: 3892-3901

CARBOWELTM

Carboplatin Injection

Strengths - 150mg/15ml, 450mg/45ml

It is indicated :-

- For the **initial treatment of advanced ovarian carcinoma** in combination with Cyclophosphamide.
- For the **palliative treatment** of patients with **recurrent ovarian carcinoma**.



CISWEL[®]

Cisplatin Injection

Strengths - 10mg/10ml, 50mg/50ml

It is indicated :-

- For **metastatic testicular tumors** as combination therapy.
- For **metastatic ovarian tumors** in combination with Cyclophosphamide.
- As a single agent for patients with **transitional cell bladder cancer**.



CARBOWEL

CISWEL

FOSFATM

Ifosfamide for Injection with Mesna Injection

Ifosfamide for Injection

Strengths - 1gm, 2gm, 3gm

It is indicated :-

- As the **first line single agent therapy in Soft tissue sarcoma.**
- As a single agent or in combination with Cisplatin and Bleomycin in **advanced or recurrent cervical carcinoma.**

Mesna Injection

Strengths - 2ml, 4ml

It is indicated :-

- As a prophylactic agent in reducing the incidence of ifosfamide induced hemorrhagic cystitis.



XYLOTINTM

Oxaliplatin Injection / Oxaliplatin for Injection (Lyophilized)

Oxaliplatin Injection

Strengths - 50mg/25ml, 100mg/50ml

Oxaliplatin for Injection (Lyophilized)

Strengths – 50mg, 100mg

It is indicated :-

- **As a adjuvant treatment of stage III (Duke's C) colon cancer** in patients who have undergone complete resection of the primary tumor.
- In the treatment of **advanced metastatic colorectal cancer.**



FOSFA

XYLOTIN

CYPHOSTM

Cyclophosphamide Injection

Strengths – 200mg, 500mg, 1gm

It is indicated for the treatment of :-

- **Hodgkin's lymphoma, Lymphocytic lymphoma, Mixed cell type lymphoma, Histiocytic lymphoma, Burkitt's lymphoma?**
- **Multiple Myeloma**
- **Leukemia: Chronic lymphocytic leukemia, chronic granulocytic leukemia, acute myelogenous, monocytic leukemia and acute lymphoblastic leukemia in children**
- **Mycosis fungoides**
- **Neuroblastoma**
- **Adenocarcinoma**
- **Retinoblastoma**
- **Carcinoma of breast**



TINOWELTM

Dactinomycin for Injection (Lyophilized)

Strength – 0.5 mg

It is indicated :-

- For the treatment of **Wilm's tumor, childhood rhabdomyosarcoma, Ewing's Sarcoma and metastatic nonseminomatous testicular cancer** as a combination therapy.
- For the treatment of **gestational trophoblastic neoplastic** as a single agent or as a combination therapy.
- For Palliative or adjunctive treatment of **locally recurrent or locoregional solid malignancies.**
- For the treatment of **Germ cell tumors, Kaposi's sarcoma, Melanoma and Osteogenic sarcoma.**



CYPHOS

TINOWEL

DOXORUBA[®]

Doxorubicin HCl Injection /
Doxorubicin HCl for Injection (Lyophilized)

Doxorubicin HCl Injection
Strengths - 10mg/5ml, 50mg/25ml

Doxorubicin HCl for Injection (Lyophilized)
Strengths – 10mg, 50mg

It is indicated for the treatment of :-

- **Carcinoma of the breast, lung, bladder, thyroid and also ovarian carcinoma**
- **Bone and soft tissue sarcoma**
- **Hodgkin's lymphoma and Non Hodgkin's lymphoma**
- **Neuroblastoma, Wilm's tumor**
- **Acute lymphoblastic leukemia and Acute myeloblastic leukemia**



ETOPATM

Etoposide Injection /
Etoposide Capsules

Etoposide Injection
Strength - 100mg/5ml

Etoposide capsules
Strengths – 50mg, 100mg

It is indicated for the treatment of :-

- **Small cell lung cancer**
- **Testicular cancer**
- **Bladder cancer**
- **Hodgkin's lymphoma**
- **Non-Hodgkin's lymphoma**



DOXORUBA

ETOPA

CABITA™

Capecitabine Tablets

Strength – 500mg

Pack – 1 x 10 Tabs

It is indicated :-

- For the treatment of **Adjuvant Colorectal Cancer and Metastatic Breast Cancer.**
- For the treatment of **Breast Cancer.**

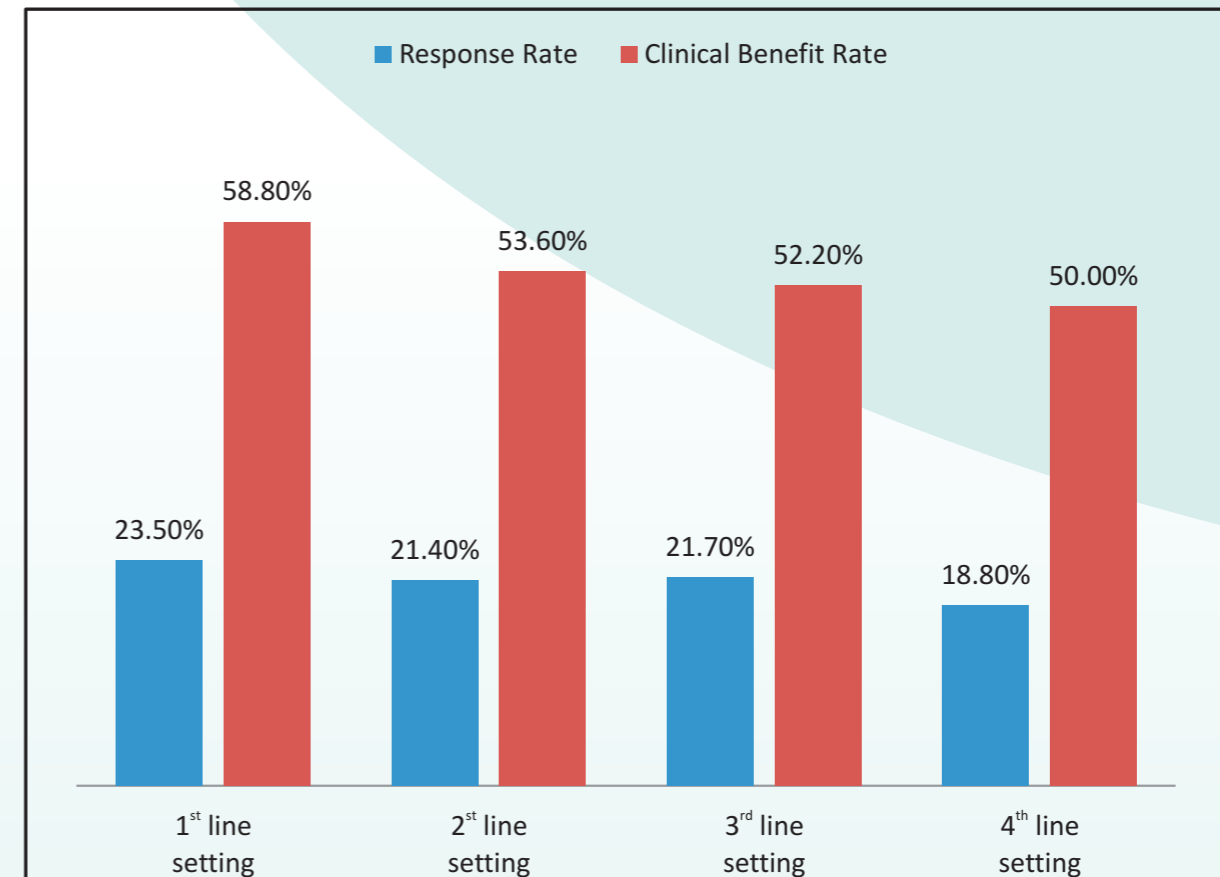


Capecitabine treatment improves quality of life in women with breast cancer¹.



Capecitabine monotherapy is effective and well tolerated in all settings of chemotherapy in patients with metastatic or advanced breast cancer²

	1st line setting	2nd line setting	3rd line setting	4th line setting
Median number of cycles in each setting	12 cycles	11 cycles	9 cycles	11 cycles
Response Rate	23.50%	21.40%	21.70%	18.80%
Clinical Benefit Rate	58.80%	53.60%	52.20%	50.00%



Reference

1. Gelmon K, Chan A, Harbeck N; The Role of Capecitabine in First – Line Treatment for Patients with Metastatic Breast Cancer; The Oncologist 2006; 11 (suppl 1):42 - 51
2. Jpn J Clin Oncol 2010; 40(3) 188-193

TEMZOL™

Temozolomide
Capsules

Strengths – 20mg, 100mg, 250mg

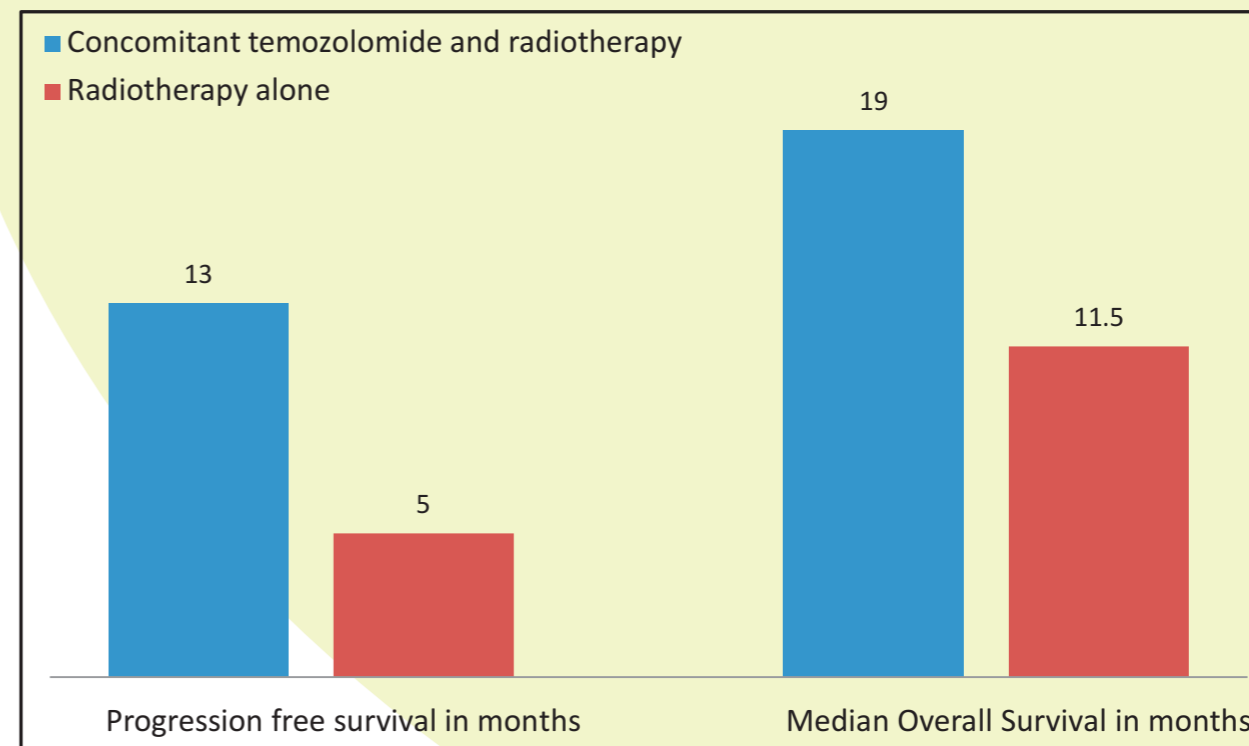
Pack – 1 x 5 Caps

It is indicated :-

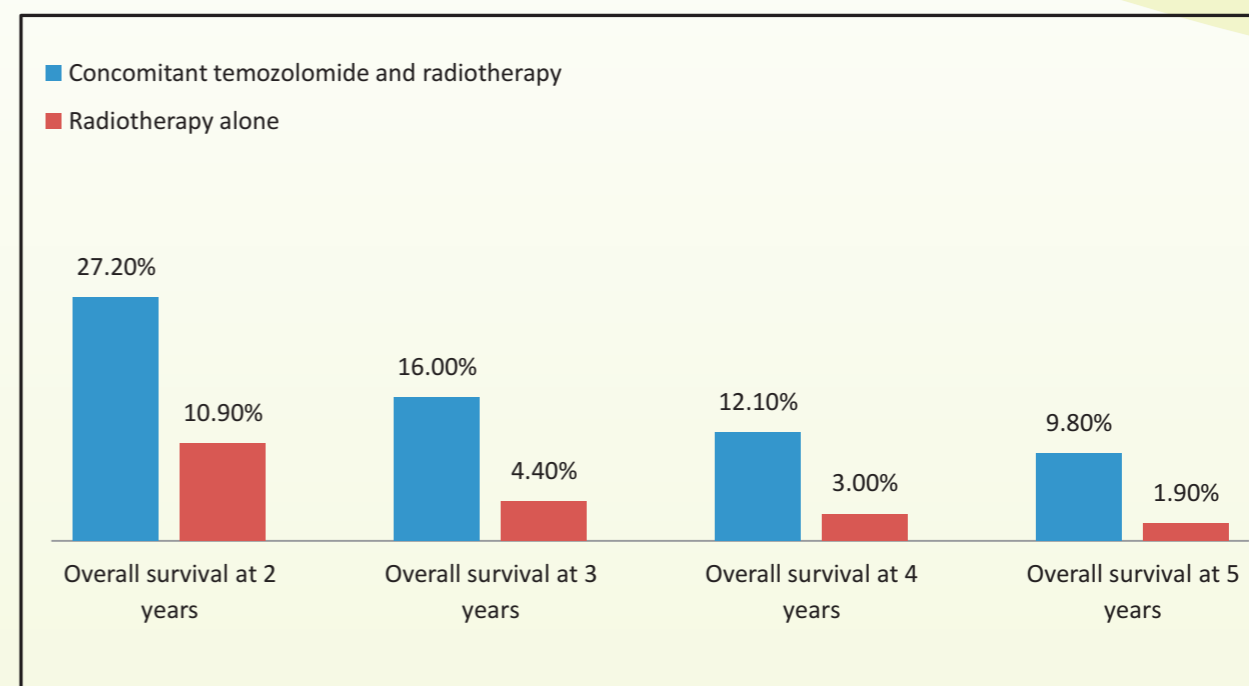
- For the treatment of **newly diagnosed glioblastoma multiforme (GBM) concomitantly with radiotherapy** and then as maintenance treatment.
- For the treatment of **Refractory anaplastic astrocytomas.**



Concurrent Temozolomide and Radiotherapy more effective than Radiotherapy alone for treatment of newly diagnosed glioblastoma multiforme¹



Effects of radiotherapy with concomitant and adjuvant temozolomide versus radiotherapy alone on survival in Glioblastoma in a randomised Phase III study²



Reference

1. J BUON. 2011 Jan-Mar;16(1):133-7.
2. Lancet Oncol 2009; 10: 459 - 66

TEMZOL

MATNIB™

Imatinib Mesylate Tablets

Strengths – 100mg, 400mg
Pack – 1 x 10 Tabs

It is indicated :-

- For the treatment of **Philadelphia chromosome positive myeloid leukemia** in **blast crisis, accelerated crisis** or in **chronic phase** after failure of interferon alpha therapy.
- For the treatment of **Gastrointestinal Stromal Tumors (GIST)**.



Seven year response to Imatinib as initial treatment versus re-treatment in Chinese patients with Chronic Myelogenous Leukemia in the chronic phase¹.



Methods: A retrospective study of 171 CML-CP patients receiving imatinib monotherapy was done with 73 in the initial treatment group (disease course \leq 6 months) and 98 in the re-treatment group (disease courses $>$ 6 months).



RESULTS

RESULTS	Initial treatment group	Re-treatment group
Median time to major molecular response	15 months	36 months
Progression free survival at 84 months	97%	85%
Event free survival at 84 months	92%	70%

Conclusion: **CML-CP patients benefits from early treatment with Imatinib.**

Reference

1. Ann Hematol. 2010 Jul 29

MATNIB

GEFTIWELTM

Gefitinib Tablets

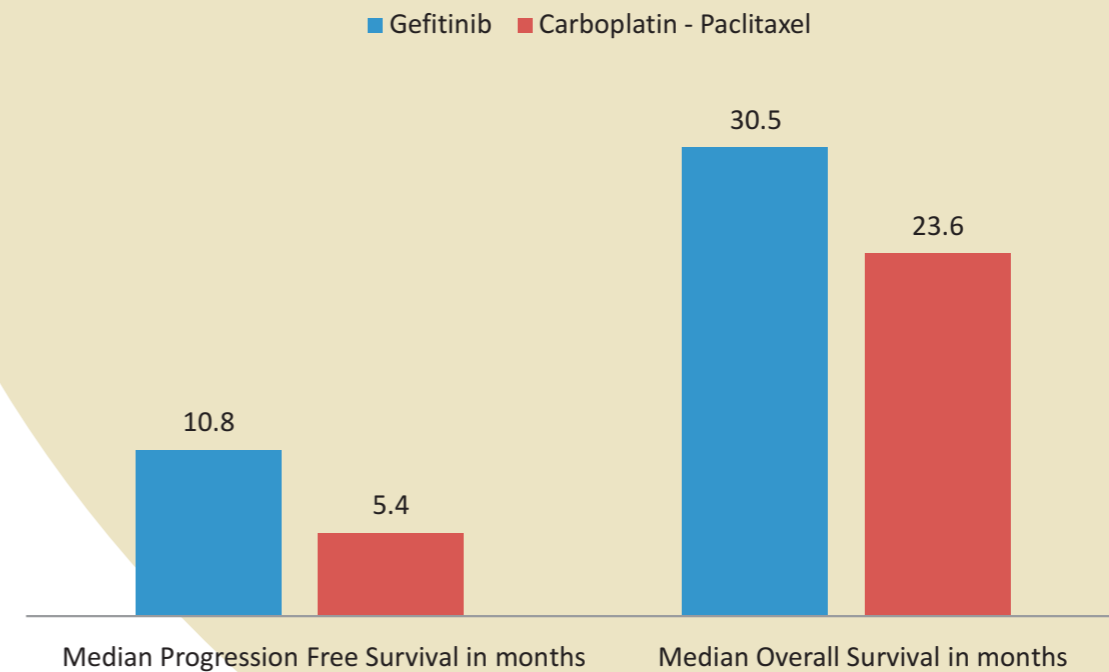
Strength – 250mg
Pack – 3 x 10 Tabs

- It is indicated as monotherapy for locally **advanced or metastatic NSCLC**.

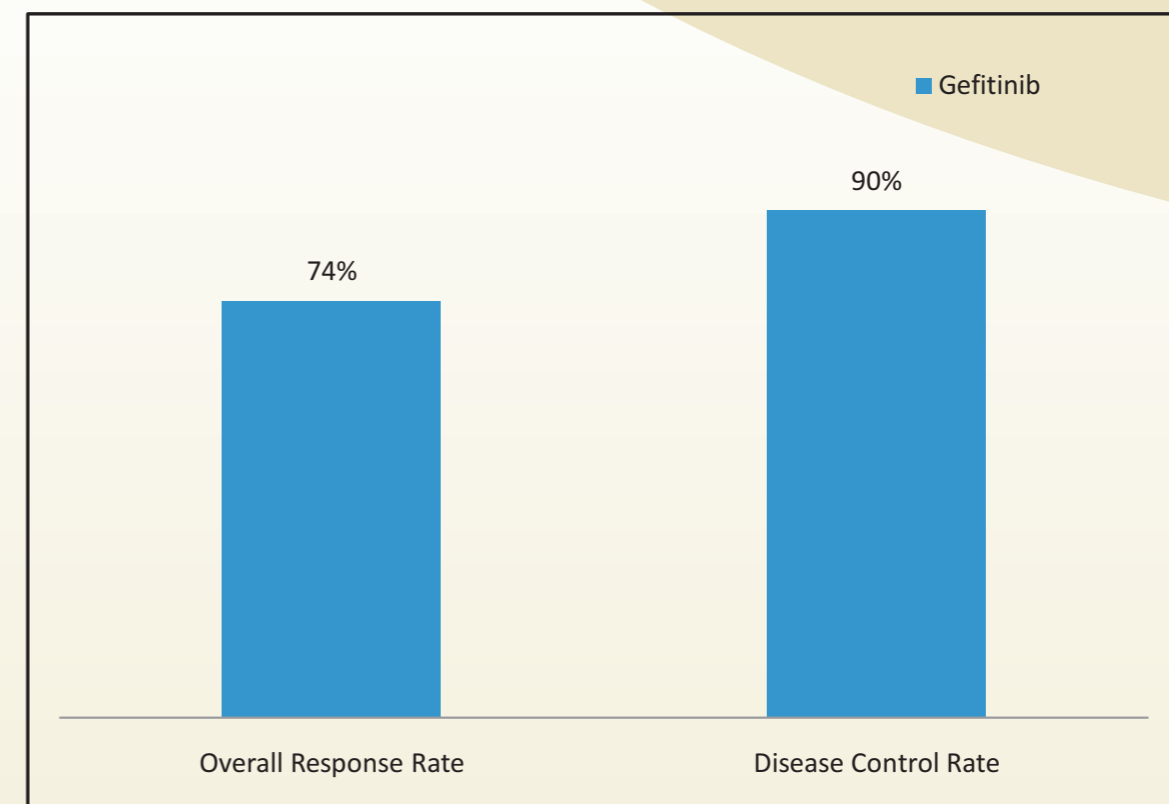


- **Gefitinib vs. Carboplatin / Paclitaxel was compared as a first line treatment in NSCLC, and it was concluded that this is the first time a targeted monotherapy has demonstrated significantly longer PFS than doublet chemotherapy¹.**

First line Gefitinib in NSCLC²



First-Line Gefitinib therapy for elderly advanced NSCLC patients with Epidermal Growth Factor Receptor mutations³



Reference

1. http://www.ispub.com/journal/the_internet_journal_of_pulmonary_medicine/volume_11_number_2_5/article/gefitinib-as-mono-therapy-in-the-first-line-setting-in-non-small-cell-lung-cancer.html
2. N Engl J Med. 2010 Jun 24;362(25):2380-8
3. Journal of Clinical Oncology, Vol 28, No 15_suppl (May 20 Supplement), 2010:7561

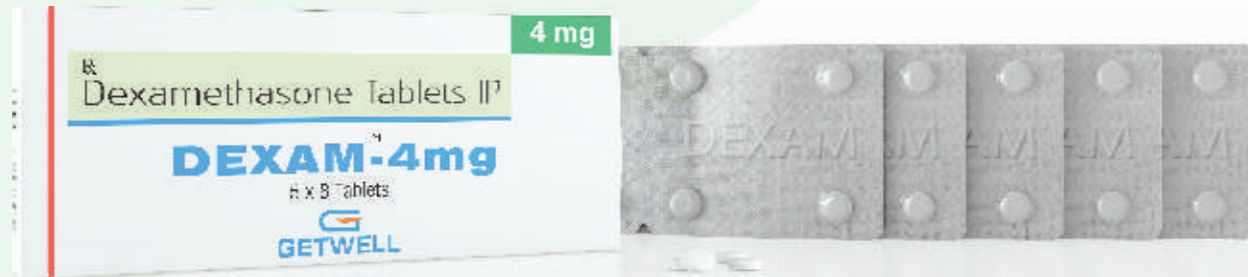
DEXAMTM

Dexamethasone Tablets

Strengths – 4mg, 8mg
Pack – 5 × 8 Tabs

It is indicated :-

- For **palliative management of Leukemias and lymphomas** in adults and **acute leukemias** of childhood.
- As **premedication in chemotherapy** associated **nausea and vomiting** and **taxane therapy**.



THALIMIDETM

Thalidomide Capsules

Strengths – 50mg, 100mg
Pack – 3 × 10 Caps

It is indicated for the treatment of :-

- Cutaneous manifestations of moderate to severe **Erythema Nodosum Leprosum (ENL)**.
- Patients with newly diagnosed **Multiple Myeloma** in combination with Dexamethasone.



DEXAM

THALIMIDE

GLUTAM-15TM

L-Glutamine Oral Powder

Strength – 15gm



- Glutamine supplements decrease the incidence and severity of adverse effects due to radiation in cancer patients such as **dermatitis in breast cancer patients¹, Stomatitis & Oesophagitis^{2,3} & intestinal permeability⁴.**
- Glutamine prevents chemotherapy associated **mucositis, diarrhea associated Irinotecan, nervous system damage caused by Paclitaxel, Cardiotoxicity caused by anthracycline⁴**. It is given concomitantly along with **Methotrexate to enhance its tumorocidal activity⁵.**
- In surgery, glutamine decreases infections and **improves recovery after surgery**. Glutamine supplementation **attenuated the negative postoperative nitrogen balance and supports muscle protein synthesis⁶**. Glutamine **boosts the immune system** by increasing levels of lymphocytes⁷.
- Glutamine enhances selectivity of chemotherapy by **protecting normal tissue from chemotherapy and by sensitizing tumor cells to chemotherapy⁵.**
- Oral glutamine **reduce incidence of gastrointestinal, Nervous system, heart complications, diarrhea due to chemotherapy³.**

- **Glutamine supplementations reduce tumor growth by 40% and stimulate natural killer cell activity⁸.**
- Glutamine nutrition **decreases infections and shortens hospital stay in Bone marrow transplant patients⁹.**
- GLN supplementation **reduced length of hospital stay on an average of 4 d.⁶**

References:

1. Oral glutamine curbs radiation dermatitis in breast cancer patients; Internal Medicine News, March 1, 2005; cited at http://findarticles.com/p/articles/mi_hb4365/is_5_38/ai_n29173335/.
2. Skubitz, Keith M., Anderson, Peter M. Oral glutamine to reduce Stomatitis, 1996, US 5545668.
3. Savarese DM, Savy G, Vahdat L, Wischmeyer PE, Corey B; Prevention of chemotherapy and radiation toxicity with glutamine; Cancer Treat Rev. 2003; 29(6): 501-13.
4. Nutritional Supplements That Support Cancer Chemotherapy; cited at http://www.powershow.com/view/11ba7-ZjEzO/Nutritional_Supplements_That_Support_Cancer_Chemotherapy; cited on July 30, 2010, 10am
5. Rouse K, Nwokedi E, Woodliff JE, Epstein J, Klimberg VS; Glutamine Enhances Selectivity of Chemotherapy Through Changes in Glutathione Metabolism; Annals of Surgery; 1995; 221(4): 420-426.
6. Wilmore DW; The Effect of Glutamine Supplementation in Patients Following Elective Surgery and Accidental Injury; JN The Journal of Nutrition; 2001; 131: 2543S-2549S.
7. Rouse K, Nwokedi E, Woodliff JE, Epstein J, Klimberg VS; Glutamine Enhances Selectivity of Chemotherapy Through Changes in Glutathione Metabolism; Annals of Surgery; 1995; 221(4): 420-426.
8. Klimberg VS; Is Glutamine Effective in Enhancing Host Immune Response to Tumor?; JN The Journal of Nutrition; 135: 2920S, 2005
9. Souba WW; Glutamine and Cancer; Annals of Surgery; 1993; 218(6): 715-728

ZOLDRON™

Zoledronic Acid
for Injection (Lyophilized)

Strength - 4mg

It is indicated :-

- For the treatment of **hypercalcemia of malignancy**.
- For treatment of **bone metastasis** in patients with **multiple myeloma** and **solid tumors** in conjunction with antineoplastic therapy.
- **To preserve bone mineral density in premenopausal women** who have developed ovarian failure due to adjuvant chemotherapy.*

* Eur J Cancer. 2011 Mar;47(5):683-9. Epub 2011 Feb 14.



LEUCOWEL®

Leucovorin Calcium
Injection

Strengths – 15mg/2ml, 50mg/5ml

It is indicated :-

- After high dose Methotrexate therapy in **osteosarcoma** to **diminish the toxicity caused by Methotrexate**.
- In the treatment of **megaloblastic anemia** due to folic acid therapy when oral therapy is not recommended.
- For use in combination with 5-fluorouracil to prolong survival in the **palliative treatment patients with advanced colorectal cancer**.



ZOLDRON

LEUCOWEL