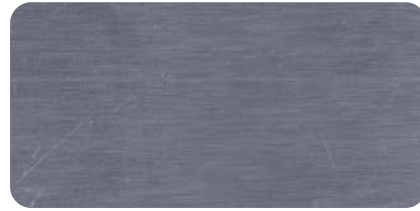


## BRUSH & MIRROR



EB-301 Brush Silver



EB-302 Brush Gold



EB-303 Mirror Silver



EB-304 Mirror Gold

## GALAXY



EB-901 Sparkling White



EB-902 Sparkling Black



EB-903 Sparkling Red

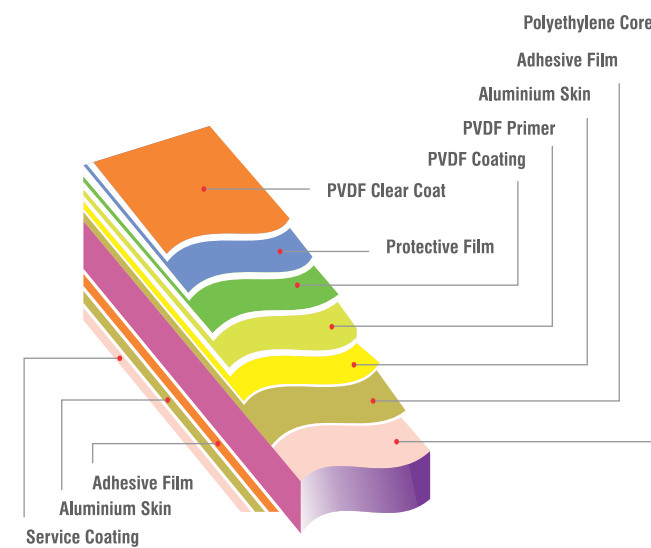


EB-904 Sparkling Blue



EB-905 Sparkling Bronze

## EVA BOND PANEL COMPOSITION



## PRODUCT TOLERANCE

|                     |                         |
|---------------------|-------------------------|
| STANDERD WIDTH      | 1220mm                  |
| AVAILABLE WIDTH     | 1550mm                  |
| STANDESD LENGTH     | 2440mm,3050mm,3660mm    |
| AVAILABLE LENGTH    | Any length up to 4880mm |
| STANDARD THICKNESS  | 3mm,4mm                 |
| AVAILABLE THICKNESS | 2mm,5mm,6mm             |
| ALU.COIL THICKNESS  | 0.25mm,0.50mm           |
| WIDTH               | 0 / ± 4.0 mm            |
| LENGTH              | 0 / ± 6.0 mm            |
| THICKNESS           | 4 mm thick ± 0.2 mm     |
| BOW                 | 0.5% of length & Width  |
| SQUARENESS          | Max 5.0 mm              |



ECO FRIENDLY



TERMITE RESISTENCE



EXTRA STRENGTH



WEATHER RESISTENCE



USE OF LEAD FREE PAINTS



## EVA ALU PANEL LIMITED

At. & Post-Dalpur (Himatnagar), N.H. 8, Nr. Ashirwad Hotel,  
Ta. Prantij, Dist. Sabarkantha, Gujarat, India - 383 120  
Ph.: +90 2770 240001 / 2, Mo.: 75748 16226,  
Fax: +91 2770 240009, Email: evabond\_acp@yahoo.com



www.evabond.com

## BRANCH OFFICES

**AHMEDABAD**  
+91 94 29 74 63 71  
+91 70 96 05 94 44

**SURAT**  
+91 96 24 51 78 22  
+91 94 29 74 63 71

**MUMBAI**  
+91 94 27 34 19 69  
+91 94 29 74 63 71

**GOA**  
+91 94 27 34 19 69  
+91 94 29 74 63 71

**BANGLORE**  
+91 75 74 81 62 26

**HYDERABAD**  
+91 75 74 81 62 26

**KERALA**  
+91 75 74 81 62 26

**RAJASTHAN**  
+91 75 74 81 62 26  
+91 93 14 04 54 59

BLUE CHISEL | +91-9327 00 68 43

# IMAGINATION

ONE STEP HIGHER



AN ISO 9001 : 2015 CERTIFIED COMPANY





We have a lot of confidence in the quality and durability of each Eva Bond Product. So much confidence, that we offer an industry-leading Eva Bond Panels with fantastic 10 Years of Warranty. All warranties are limited. For complete details, see a dealer.

Eva Bond warrants that its products are free from manufacturing defects and they are fit and suitable for usual purpose. The products must be inspected prior to installation and our liability will be limited to the cost of product only.



## METALLIC COLOURS



EB-101 Bright Silver



EB-102 Metallic Silver



EB-103 Champagne Silver



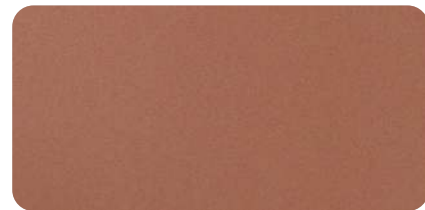
EB-104 Champagne Gold



EB-105 Dark Bronze



EB-106 Karat Gold



EB-107 Fine Copper



EB-108 Silver Blue



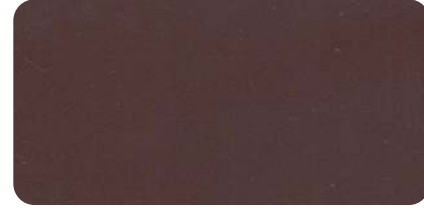
EB-109 Jade Green



EB-110 Silver Black



EB-111 Pearl Copper



EB-112 Coffee Brown



EB-113 Wine Red

## SOLID COLOURS



EB-201 Snow White



EB-202 Milky White



EB-203 Lemon Yellow



EB-204 Traffic Yellow



EB-205 Refreshing Orange



EB-206 Bright Red



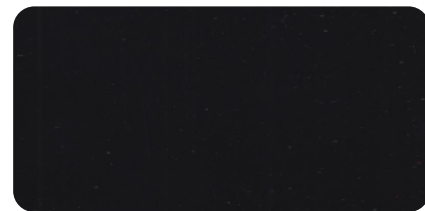
EB-207 Refreshing Green



EB-208 Sea Blue



EB-209 Oppo Green



EB-210 Black



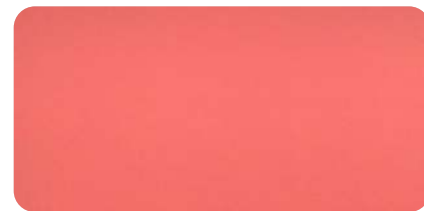
EB-211 Dark Blue



EB-212 Glossy White



EB-213 Glossy Red



EB-214 Dark Pink

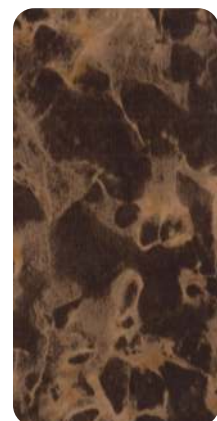


EB-215 Ash Grey

## MARBLE & WOODEN



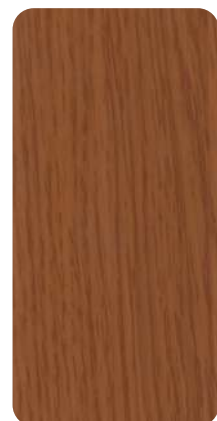
EB-305 Mahogany Red



EB-306 Emprador



EB-307 Marble Black



EB-308 Teak Wood



EB-309 Tiger Wood Texture



EB-310 Kop Texture



EB-311 Gemini Texture



EB-312 African Ipe



EB-313 Bocote Wood



EB-314 Wenge Wood



EB-315 Cherry Wood

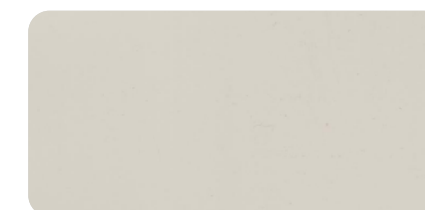


EB-316 Brazilian Wood

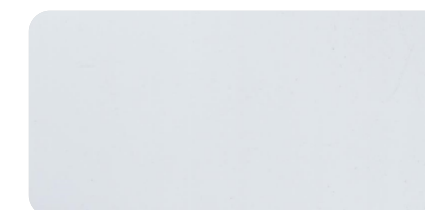


EB-317 Walnut Wood

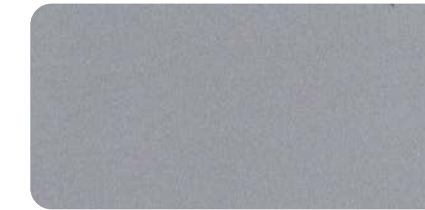
## PARTITION (APP)



EB-401 Ivory



EB-402 White



EB-403 Silver



EB-404 Karat Gold



EB-407 Black Silver



EB-408 Coffee Brown



EB-409 Red



EB-405 Country Pine



EB-406 Ebony