



PENNSYLVANIA CASTLE

Isle of Portland

Your Hosts



At Pennsylvania Castle we aim to make your stay the most luxurious experience possible.

Being part of an Australian leisure group, we know how to entertain in a welcoming environment offering a tranquil escape from the pressures and pace of day-to-day life. With luxurious beds, beautiful bedrooms and enough peaceful living space to lose yourself in, The Penn provides an impressive 'retreat' with endless opportunity.

We offer complete flexibility and can be on hand to look after every aspect of your visit from chauffeurs and chefs to chartering yachts across Weymouth Bay. Alternatively, we are

happy to leave you to enjoy the Castle for yourselves but are always available during your stay, should you need us.

Jo Peters, the Castle Manager, is able to guide you through the preparations for your event and to make sure that you and your guests have a perfect experience. Jo comes from a background of international travel and tourism and understands what people want from a luxurious wedding, event or private rental.



Background

LouisaMaranPhotography.co.uk



After being a private residence for many years The Penn has now been made available to rent for holidays, conferences, weddings and other special occasions.

Following recent refurbishment, The Penn offers classic yet modern surroundings with an obvious emphasis on comfort and luxury, with nine immaculate en-suite bedrooms, extensive entertaining and living areas and a fully equipped heated indoor pool. The Penn and its grounds occupy a total of 1.73 hectares (4.27 acres), with gardens that have been impeccably designed to provide secluded retreats throughout, adding to the charm and privacy of the estate.

The Location



The Penn is located on the Isle of Portland which forms the southernmost point of the county of Dorset, England and is 4½ miles long by 1¾ miles wide. The principal rooms look out across the rugged UNESCO World Heritage listed Jurassic Coast and along the English Channel towards St Alban's Head and the Isle of Wight.

Joined to the mainland by a causeway, the island is surrounded by the seas of the English Channel. Glorious sunrises and sunsets with waves rolling past the Castle create an idyllic spot and on dark and stormy days, sit and relax by the open fire and watch the waves crashing along the coast.

On entering the Island you pass one of the largest man-made harbours in the world, dominated for centuries by the Royal Navy and more recently home to the 2012 Olympic Games Sailing Events. Climb the steep escarpment and enter a unique landscape where Portland Stone has been hewn for buildings from St Paul's Cathedral to the United Nations Building in New York. This whole area has become a popular recreational area for sailing, diving, fishing, walking and generally enjoying the relaxing pace of island life.



The History



John Penn started construction of Pennsylvania Castle in 1797 after King George III gave him the land that it now occupies. He was the grandson of William Penn, founder of Pennsylvania USA.

After appointing architect James Wyatt, who had designed a number of churches and buildings around England and was well-known for his 'neo gothic' style, Pennsylvania Castle was opened by Princess Elizabeth, daughter of King George III, in 1800.

The Penn has a rich and varied history that takes in Royal celebrations (the King and Queen visited in 1800 and enjoyed their wedding anniversary here), the Napoleonic Wars, preparations for the D-Day landings, and literary figures such as Thomas Hardy whose novel "The Well Beloved" has the Castle at the heart of its love story.

The Castle sits in the shelter of Church Ope Cove, and a five-minute walk will take you back to William the Conqueror, historic castles and churches, and stories of smugglers.

In 1950 the Castle was turned into a hotel, then back into a private home in 1994 and is once again open to guests for private rental.

Although this is a building of significant history, it is also a very comfortable home suited to family holidays, corporate events and entertaining on a grand scale.



The Castle



Ground floor

Reception Hall, Drawing Room, Dining Room, Library, Conservatory, Study, Kitchen, various domestic offices including Utility Room, Butler's Pantry and Wine Store and a magnificent indoor swimming pool and Orangery.

First floor

7 bedrooms

Mezzanine floor

2 bedrooms

Outbuildings

Romantic wedding pagoda, Japanese-style tea house, breeze house, waterfall with lookout, log store, guest greenhouse with organic herb and vegetable garden.

The pool is available during the winter months so you can relax with a warm swim and lounge in the pool area watching the stormy seas. From April to September the pool is transformed into a beautiful Orangery, making it the most stylish venue on the South Coast.



The Grounds



Surrounding the house there are several individually landscaped paved terraces for outdoor entertaining.

To the south-west lies a magnificent Italian garden with rectangular lily ponds and rose beds, as well as a beautiful ornamental fountain. This garden is sheltered by a stone wall with an arched opening that leads to a large lawn area, perfect for erecting marquees for weddings and events as well as being used as a helipad.

Beyond the Castle grounds a path passes the ruins of the ancient 12th-century church of St Andrews and descends to Church Ope Cove, a picturesque and sheltered beach. At the cliff edge of Church Ope Cove stands what remains of Rufus Castle, the oldest castle in Portland.

Your Wedding Ceremony



*When you step inside
Pennsylvania Castle you are
overwhelmed by its feeling of
beauty and serenity; it offers the
perfect setting for your very own
fairy-tale wedding day.*

Should you wish to be married at the Castle, your ceremony will take place in your choice of licensed rooms including the elegant Library, Conservatory, Drawing or Dining Room for up to 60 guests. Alternatively, vows may be taken in the garden, offering additional space and spectacular views of the sea as a backdrop to your nuptials.



If you wish to stay at Pennsylvania Castle for your reception, your wedding breakfast will be held in either the Dining Room or the Orangery.

Everyone dreams of a sumptuous wedding feast and a choice of nominated caterers is available at the Castle to create whatever your heart desires. For smaller wedding parties making a special weekend of it, a personal chef might be the order of the day. Whatever you choose to serve your guests you can be sure of a meal as delightful as your surroundings. On into the evening your guests can enjoy music and dancing in the Dining Room with a licensed bar available until 11pm.

Before the celebrations officially begin there is the opportunity to create a private suite of bedrooms within the Castle, where the bride and her bridesmaids can meet with their chosen make-up artists and hairdressers who are able to visit on site, so that you may prepare for your big day in relaxed luxury, totally undisturbed by other guests.

You may then wish to spend your wedding night surrounded by sheer splendour in our

glorious round bridal suite, where you will find a luxurious oversized bed, handmade bath and the best view of all, just for the two of you.

As the Castle is hired exclusively, eight more beautiful bedrooms are also available for your principal guests to enjoy, making a fabulous weekend of your wedding.

Nobody wants their perfect wedding day to come to an end, so when the time comes for you to leave Pennsylvania Castle as husband and wife, an idyllic honeymoon is the perfect way to extend your celebration. A helicopter can be arranged to take you from the Castle to the international airport of your choice. Perhaps from one UNESCO World Heritage site to another and Orpheus Island will provide you with the tropical honeymoon of your dreams following your fairy-tale Castle wedding.

www.orpheus.com.au



Your Reception



Corporate Events and Film Location



The Penn provides a relaxed and inviting environment in which to host business meetings, team days, conferences or large-scale corporate events for local, national or international organisations.

Whether it's a celebratory party or a strategic planning session, we would be delighted to help you plan a getaway to be remembered.

A variety of different-sized rooms are perfect for breakout sessions. The Island provides a wealth of teambuilding activities within minutes of the Castle, or alternatively perfect restaurants and pubs to treat the team to some down time.

Audio visual equipment is available for hire and the Castle has broadband services.

The Castle and grounds also offer a stunning backdrop for film location or advertising agencies looking for a special venue with an impressive coastal view and have played host to various photo shoots, TV series and Hollywood film crews.

Should you or any of your attendees need to arrive at the Castle by helicopter you may use our private helipad located within the Castle grounds.

Holidays



If you're looking for a unique place to unwind then you have come to the right place. The Penn can be hired out to families and groups for exclusive use offering both long- and short-term stays.

Your stay at The Penn is completely flexible and we will always endeavour to make your time with us an enjoyable one. The ethos of The Penn is to provide hospitality totally tailored to your needs, and we are happy to recommend and arrange likeminded suppliers and services if you require them to ensure you are well looked after during your time with us. Alternatively, you may prefer a fully self-catered stay and be left to enjoy the Castle at your leisure.

What to do

Leisure – The range of leisure activities in the area is endless. Whilst much is water based there are superb walks, cycling, historic sites and plenty of shopping opportunities. There will be something for everyone.

Relax – In addition to our very own heated indoor swimming pool we can arrange for beauty therapists or a masseuse to visit you at the Castle.

For the energetic – Bikes are available at the Castle to use around the Island (or further afield) and a local cycle or walking guide can be arranged to take you round the best routes in the area.

signpostcycling.co.uk

A bit of luxury – chartered boats can be arranged for you to go out in the Olympic sailing waters during your stay, with power boats and yachts including Sunseekers available from Portland Harbour.

weymouth-charters.co.uk

Eating Out

The Crab House Café
crabhousecafe.co.uk

The Cove House Inn, Portland
thecovehouseinn.co.uk

The Blue Fish Café and Restaurant, Portland
thebluefishrestaurant.com

The Boat that Rocks, Portland Marina
theboatthatrocks.co.uk

Get Here

Pennsylvania Castle is located 140 miles south-west of London in Portland.

Distance from:

Weymouth mainline railway station – 7 miles

Dorchester – 15 miles

Poole – 38 miles

Southampton and M27 – 57 miles

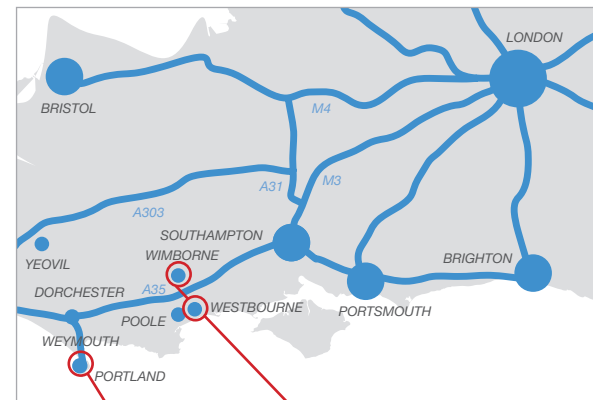
Bristol – 64 miles

Central London – 140 miles

Travel time by car from Central London – 3 hours

Travel time by train from London Waterloo – 2 hours 45 minutes

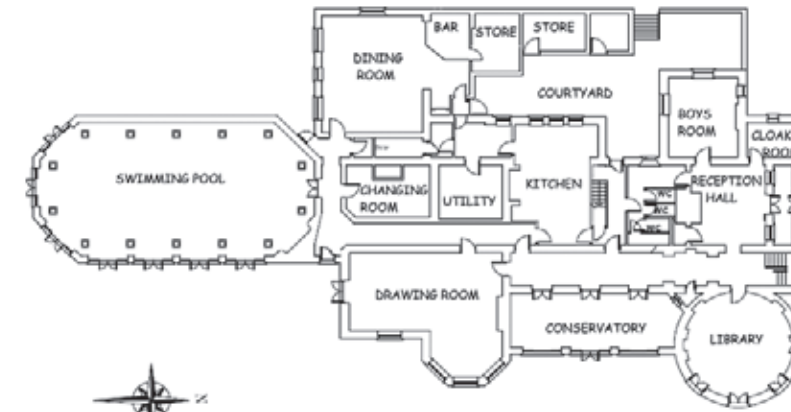
Travel time by helicopter from London – 47 minutes



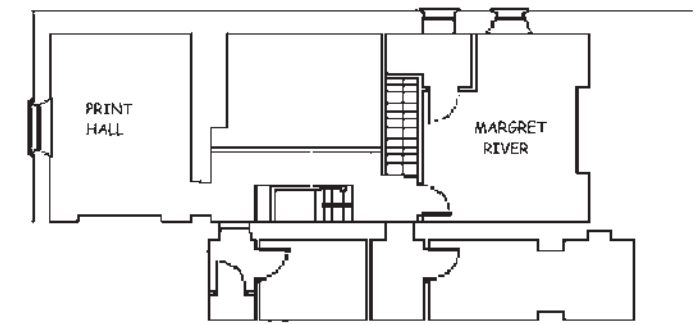
PENNSYLVANIA CASTLE
Isle of Portland



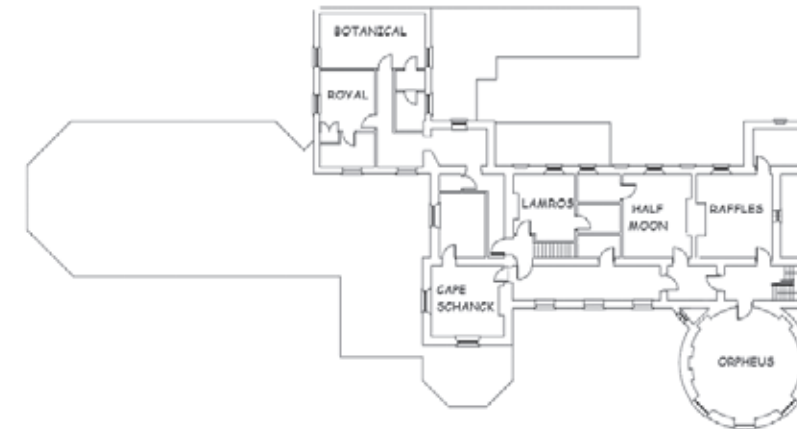
On your journey to visit the Castle why not stop at a Rock Restaurant in Wimborne or Westbourne for lunch or dinner on route to The Penn, or perhaps a Sunday Roast on your return. As nominated catering suppliers at Pennsylvania Castle you know you'll be guaranteed fine food in a relaxed environment – a perfect way to start or finish your stay with us. www.rockrestaurants.co.uk



Ground floor



Mezzanine floor



Second floor



Colonial Leisure Group

Queensland

Orpheus Island orpheus.com.au

Western Australia

Print Hall printhat.com.au

Raffles Hotel rafflesperth.com.au

The Royal on the Waterfront theroyaleastperth.com

Colonial Brewing Co colonialbrewingco.com.au

Victoria

Bimbo Deluxe bimbodeluxe.com.au

Botanical thebotanical.com.au

Half Moon halfmoon.com.au

Inkerman Hotel inkermanhotel.com.au

Lamaro's lamaros.com.au

Lucky Coq luckycoq.com.au

Portsea Hotel portseahotel.com.au

Robert Burns Hotel robertburnshotel.com.au

Skinny Dog Hotel skinnydoghotel.com.au

VicAsia vicasia.com.au

WineStyle winestyleonline.com.au

United Kingdom

Pennsylvania Castle www.thepenn.co.uk

Rock Restaurants rockrestaurants.co.uk

Back Page Image: Dorset Media Service